



Join us to

Preserve Rhode Island

Our past, your present, their future

Mission

To protect Rhode Island's historic structures and unique places for present and future generations.

Preserve Rhode Island

Historic Preservation or Land Conservation?

- Where does the violet tint end and the orange tint begins? Distinctly we see the difference of the colors, but where exactly does the one first blending enter into the other. So with sanity and insanity.

Herman Melville

J. Alden Weir Farm, Wilton, CT



Where is the boundary
between land conservation
and historic preservation?



10,000 years of human history



Community connections: Traces of our past



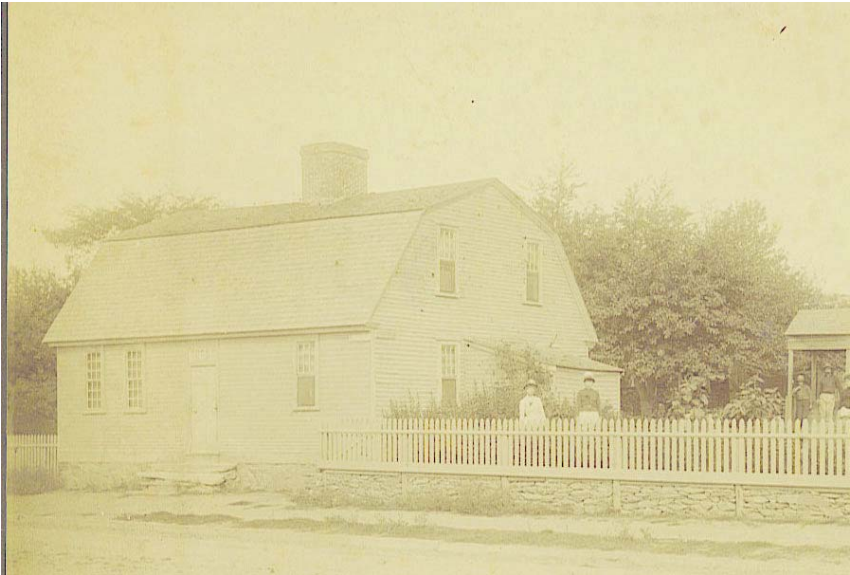
North Kingstown

Tiverton



The Greenest Building is the one that's
already built....

Carl Elefante



Use it up
Wear it out
Make it do
Or do without

Distinctive Local Character





Memo describing vision for Disneyland

"The main village, which includes the Railroad station, is built around a village green or informal park. In the park will be benches, a bandstand, drinking fountain, trees, and shrubs. It will be a place for people to sit and rest; mothers and grandmothers can watch over small children at play. I want it to be very relaxing, cool, and inviting. Around the park will be built the town. At one end will be the Railroad Station; at the other end, the Town Hall. The Hall will be built to represent a Town Hall, but actually we will use it as our administration building. It will be the headquarters of the entire project. Adjoining the Town hall will be the Fire and Police Stations. The Fire Station will contain practical fire apparatus, scaled down. The police station will also be put to practical use. Here the visitors will report all violations, lost articles, lost kids, etc. In it we could have a little jail where the kids could look in. We might even have characters in it."

Walt Disney

The Disney Way



- I dream, I test my dreams against my beliefs, I dare to take risks, and I execute my vision to make those dreams come true.

Walt Disney

- With Epcot Center the Disney Corporation has accomplished something I didn't think possible in today's world. They have created a land of make-believe that's worse than regular life.

P.J. O'Rourke

Authenticity

- The only thing that makes one place more attractive to me than another is the quantity of heart I find in it.

- *Jane Welsh Carlyle*

Historic Preservation and Land Conservation Shared Goals

- Protect community character
 - Improve quality of life
 - Preserve heritage
 - Promote interconnectedness of people with their environment
 - Keep important places for future generations
-

Parallel Worlds

- Historic Preservation and Land Conservation separated by
 - Laws and rules
 - Governmental institutions
 - Programs
 - Academic background
 - Experience
 - Common to be working to protect the same piece of real estate independently without knowledge of the other
-

True Stories from the cultural divide



- Oops, a species of special concern!

More stories



- What was the house like?

Massacre Marsh



If everyone is thinking about the world we
leave to our grandchildren.....

Similar Goals
Similar Threats
Similar methods

Why aren't we routinely working together?

Culture Bound

- Different cultures bound by language, social and political institutions and networks –shape perceptions of the world.
 - Eskimo and “snow”
 - Chief Medicine Man of Wampanoag
 - observation about American culture
 - Definition of an “**expert**”: Someone who knows more and more about less and less!
-

The Unknown

As we know,
There are known knowns.
There are things we know we know.
We also know
There are known unknowns.
That is to say
We know there are some things
We do not know.
But there are also unknown unknowns,
The ones we don't know
We don't know.

Donald Rumsfeld

Best Practices

Historic Preservation

- Market solutions, private investment, economic reasons to keep heritage
- National standards & criteria; each project part of nation's past
- Public review based on dispute resolution

Land Conservation

- Energy of citizen groups, movement, crusade, empowering volunteers
 - Public finance: direct lobbying for \$\$ for parks and open space – all levels of government
 - Landowners part of the solution
-

Daniel Webster Farm

Franklin, NH



Hassanamesitt Woods

Grafton, MA



Collaboration

- To get something done a committee should consist of no more than three people, two of whom are absent.

~Robert Copeland

- If you had to identify, in one word, the reason why the human race has not achieved, and never will achieve, its full potential, that word would be "meetings."

~Dave Barry

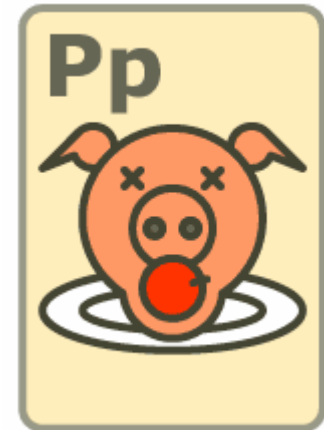
- It is impossible to imagine the universe run by a wise, just and omnipotent God, but it is quite easy to imagine it run by a board of gods.

~H.L. Mencken

Commitment to Whole Community Preservation

The difference between 'involvement' and 'commitment' is like an eggs-and-ham breakfast: the chicken was 'involved' - the pig was 'committed'.

Anonymous



Preserve Rhode Island promotes the stewardship of Rhode Island's distinctive local character and vibrant communities.

We envision:

- Rhode Islanders appreciating the economic and social benefits of preserving historic structures and unique places;
 - Rhode Islanders living in vital cities, towns and villages where new growth and development complements historic centers;
 - Rhode Islanders advancing environmentally friendly choices, reusing old buildings and conserving the landscape; and
 - Leaving an authentic and beautiful Rhode Island to future generations.
-

Synergy

- Teamwork divides the task and multiplies the success.

~Unknown

- Sticks in a bundle are unbreakable.

~Kenyan Proverb



Stewardship for the Future

- I'm a preservationist not because I'm interested in the past, but because I care about the future.

Abe Wolfe

