

# RI Land stewardship protocols: How standard can they be?

*Land and Water Summit 2009*

Scott Ruhren, Ph.D.

Senior Director of Conservation Programs

Audubon Society of Rhode Island



# Some collaborators & contributors

- Conservation Stewardship Collaborative
- Rhode Island Foundation
- Sharon Marino, US Fish & Wildlife
- Gregg Cassidy, RI Dept. of Env. Management

These guidelines are *not* regulatory



# Evolving land protection guidelines

- What do we know?
- What do we need to know?
- How best to meet your needs?

# Developing guidelines for protected land: What we know

- Ever-changing landscape
- Ever-changing needs
- Guidelines exist for certain categories, for example...
  - RI Open Space Projects
  - Farmland
  - Forest Management
  - Conservation Easements

What about the “rest”





**Let's untangle existing needs  
and procedures**

Expressed needs

Equipment  
Advice



Staff

Expertise



RINHS Wetland Sites in Fisherville Brook Wildlife Refuge



0 0.2 0.4 0.8 1.2 1.6 Miles



Legend

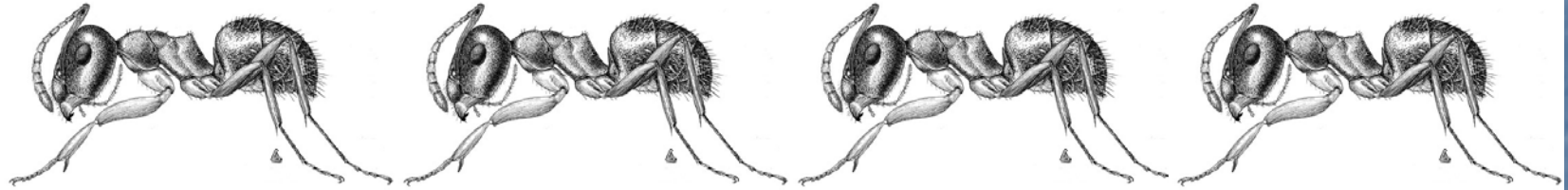
- Fisherville Boundaries
- Sites

A man in a green shirt and cap is operating a red tractor in a large, open field. The tractor is moving from left to right, leaving a path of cut grass behind it. The field is filled with tall grasses and some weeds. In the background, there is a dense line of trees under a cloudy, overcast sky. The text "How about you?" is overlaid in the center of the image in a large, white, bold font with a black outline.

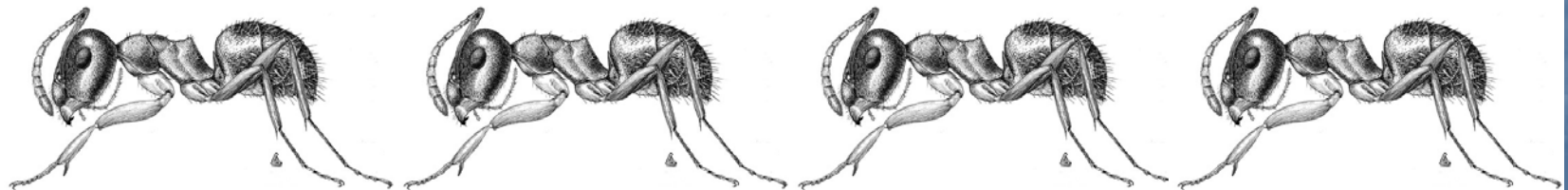
**How about you?**



# Collaboration is key



# ...while avoiding redundancy



# Project goals and challenges: What we need to know

- Collect current practice information and needs from agencies, land trusts etc.
- Compile, review and standardize practices
- Connect with “experts”
- Distribute a protocol by end of 2009



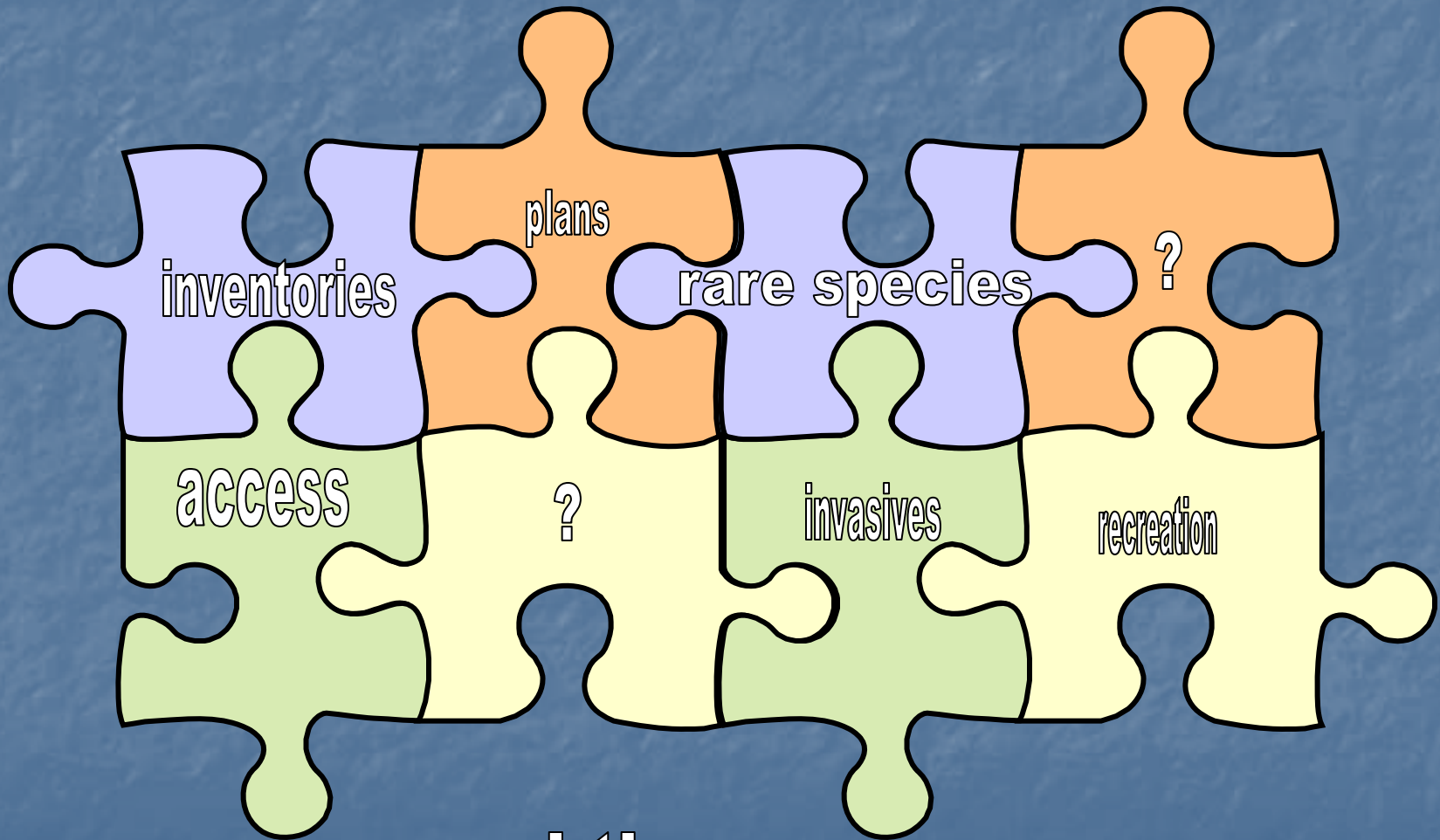
A photograph showing two individuals wading in a shallow, muddy stream. They are using a large, rectangular metal frame to filter water. The person on the left is wearing a light blue t-shirt, denim shorts, and a colorful headband, with a backpack on their back. The person on the right is wearing a red t-shirt, khaki pants, and a green cap. The background is a dense forest with green foliage and trees. The water is murky and brown. The text "How about you?" is overlaid in white, bold font across the center of the image.

**How about you?**

**Key Point: Habitat-specific management**



# Challenges for conservation land



...and the managers

# Example: RI grasslands

savannah sparrow



grasshopper sparrow



upland sandpiper



eastern meadowlark



eastern bluebird



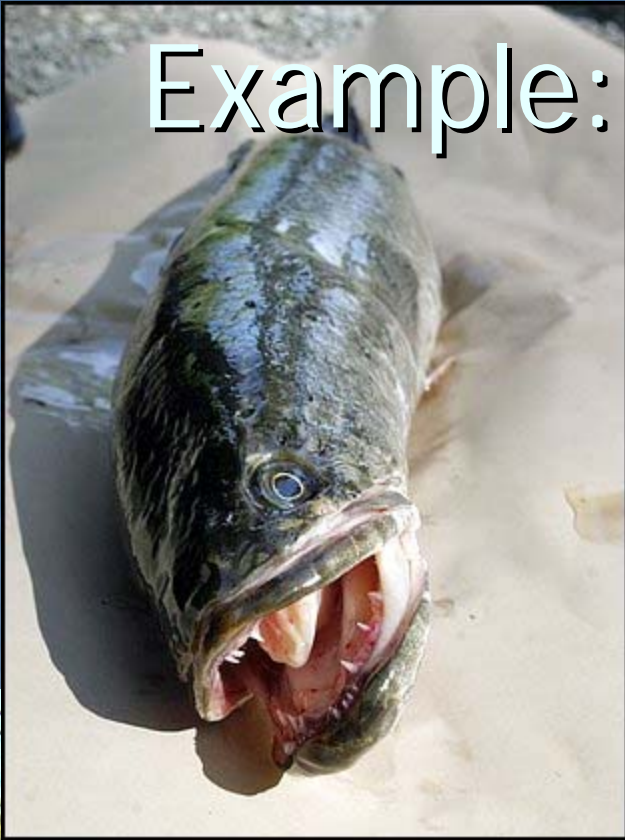
bobolink



# Example: Habitat protection and improvement



# Example: Invasive species





A wide, calm body of water reflects a dense line of green trees and foliage on the far shore. The sky is a pale, overcast blue. In the foreground, tall, vibrant green grasses grow densely, partially obscuring the water's edge. The overall scene is peaceful and natural.

**How about you?**

# Example: Ecological Restoration questions

- What can you restore?
- What do you need to know?
- How do you measure success?
- Have you hit a/the target?



A landscape photograph showing a grassy field in the foreground, a dense forest in the middle ground, and a blue sky with white clouds in the background. The text "The ultimate winners?" is overlaid in the center of the image.

**The ultimate winners?**

# What I would like today: How best to meet your needs

- Contact information
- Additional feedback
  - Priorities

Please collaborate. Your input is vital

Scott Ruhren  
12 Sanderson Road  
Smithfield, RI 02917

[sruhren@asri.org](mailto:sruhren@asri.org)

FAX: 949-5788