

A group of people are kayaking on a river. The kayakers are wearing life jackets and hats. The river is surrounded by dense green trees. The text is overlaid on the image.

HOW NOT TO *TRIP UP* WHEN *TRIP LEADING*

*Outdoor Leadership Workshop,
Land and Water Summit*

March 21, 2009



Presented by

Denise Poyer
Program Director
Wood-Pawcatuck Watershed
Association

Outdoor Leadership

“It’s one thing to be proficient at an outdoor activity and quite another to lead a group of people proficiently on an outdoor activity”.

Agenda

- Leaders and Leadership
 - Outdoor Leader Skills
 - Understanding Groups
 - Leading Groups
 - Time Management
- Planning and Preparation
- Putting it All Together

Leaders and Leadership

What describes a good leader?

What is leadership?



Leadership

A group of nine hikers, including men and women of various ages, are posed in a snowy mountain landscape. They are wearing winter gear such as jackets, hats, and backpacks. Some are standing, while others are kneeling or sitting in the snow. The background shows evergreen trees and a bright sky.

*The ability to facilitate
a group towards
a common goal*

Outdoor Leader Skills



Hard Skills vs. Soft Skills

- Technical
- Objective
- Tangible
- Task based
- Activity specific
- Interpersonal
- Subjective
- Intangible
- Relationship based
- Broad Application

Examples of Hard Skills

- Navigation
- Paddling proficiency
- Leave No Trace
- Knowledge of Equipment
- Field repairs
- Wilderness First Aid

Soft skills

- Understanding of, and flexibility with, leadership styles
- Understanding roles individuals assume in a group
- Active listening skills
- Higher concern for safety than for stated objectives
- Communication



Understanding Groups



Participant Styles

- Greener
- Opposer
- Silent Observer
- Non-Listener
- Clown
- Dominator
- Interrupter



Group Life Cycle

The image shows four men sitting on a wooden deck in front of a building with large windows. The man on the far left is wearing a blue long-sleeved shirt and sunglasses. The man next to him is wearing a red and white plaid shirt and a white cap. The man next to him is wearing a red polo shirt and a tan hat. The man on the far right is wearing a red polo shirt and a tan hat. The text 'Group Life Cycle' is overlaid on the image in a large, bold, black font. Below it, a list of five stages is shown: 'Forming', 'Storming', 'Norming & Performing', and 'Transforming'. The background shows a building with large windows and a view of trees and a body of water.

- Forming
- Storming
- Norming & Performing
- Transforming

Leading Groups



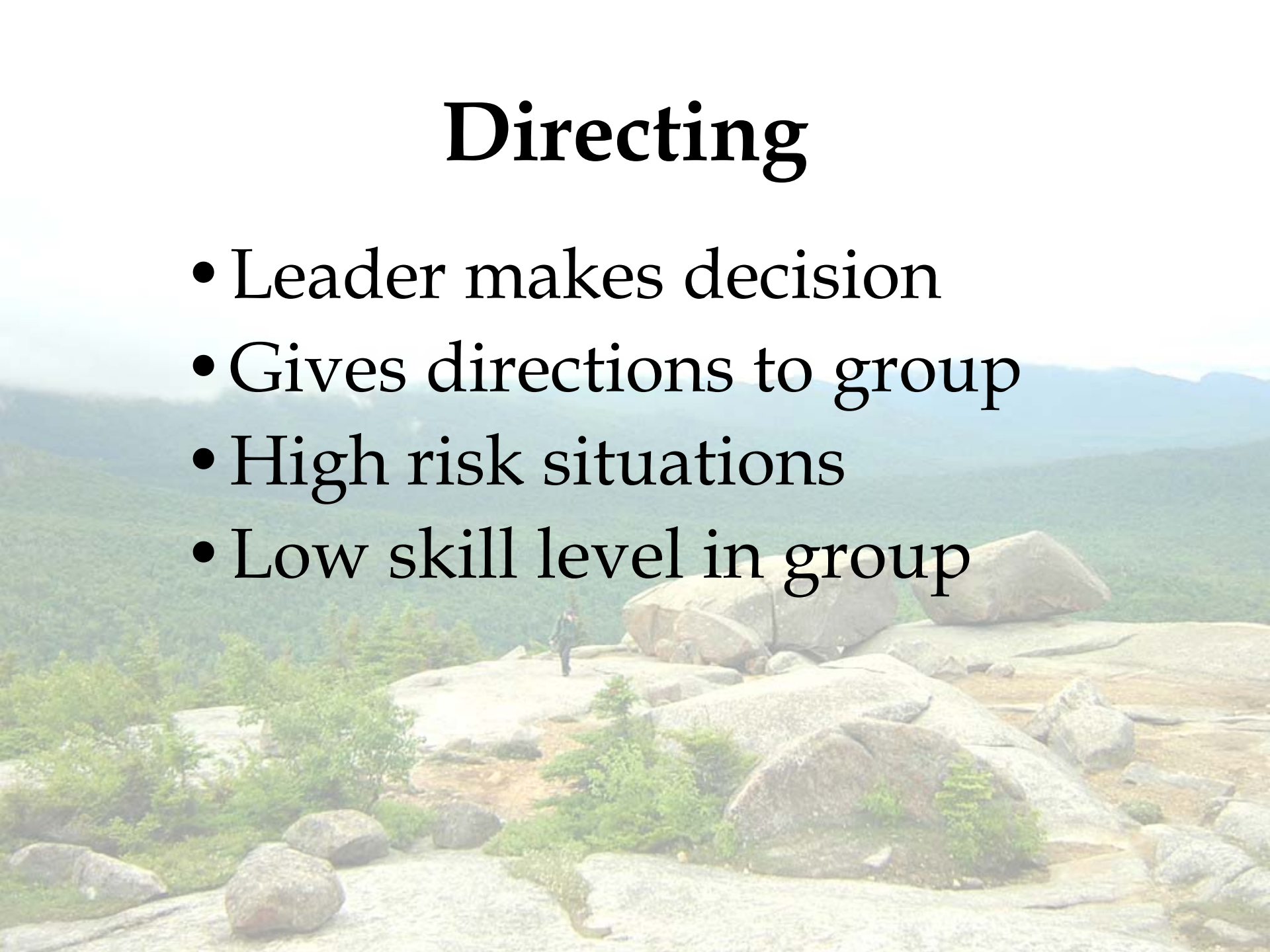
Primary Leadership Styles

The background of the slide is a photograph of a person in a blue jacket sitting on a large, mossy rock in a forest. Another person in a black jacket is leaning over from the right side, possibly assisting or observing. The scene is outdoors with many green trees and sunlight filtering through the leaves.

- Directing (Controlling)
- Selling
- Consulting
- Engaging (Coordinating)

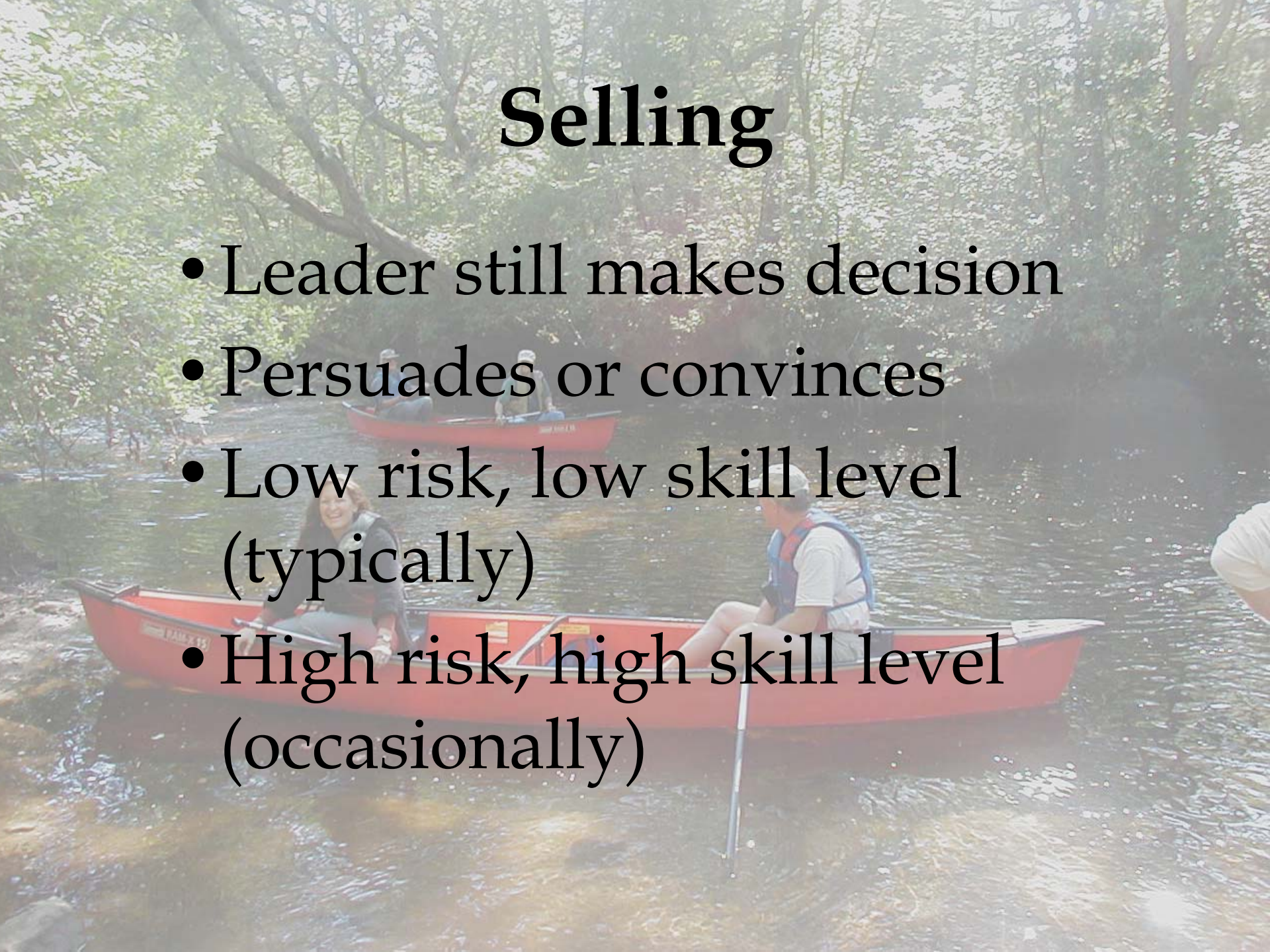
Directing

- Leader makes decision
- Gives directions to group
- High risk situations
- Low skill level in group



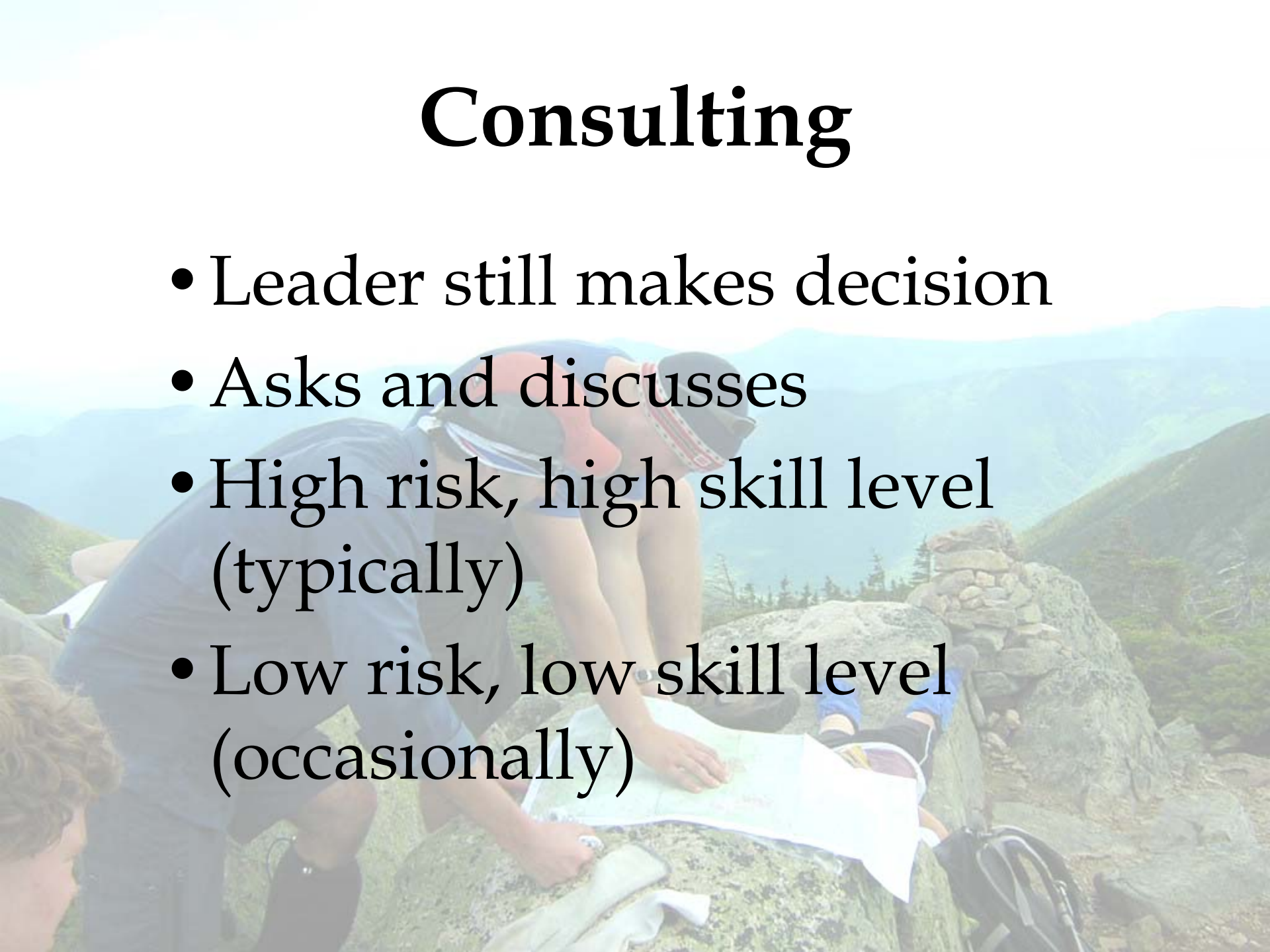
Selling

- Leader still makes decision
- Persuades or convinces
- Low risk, low skill level (typically)
- High risk, high skill level (occasionally)



Consulting

- Leader still makes decision
- Asks and discusses
- High risk, high skill level (typically)
- Low risk, low skill level (occasionally)



Engaging

- Group makes decision
- Facilitates and coordinates
- Low risk
- High skill level



Secondary Leadership Styles

- Laissez-faire
 - Group makes decision
 - Participants are competent
 - Group is cohesive
 - Low risk
 - High skill level
- Charismatic
 - Leader makes decision
 - Inspires and motivates
 - Limited use in outdoors
 - Useful when group needs a lift

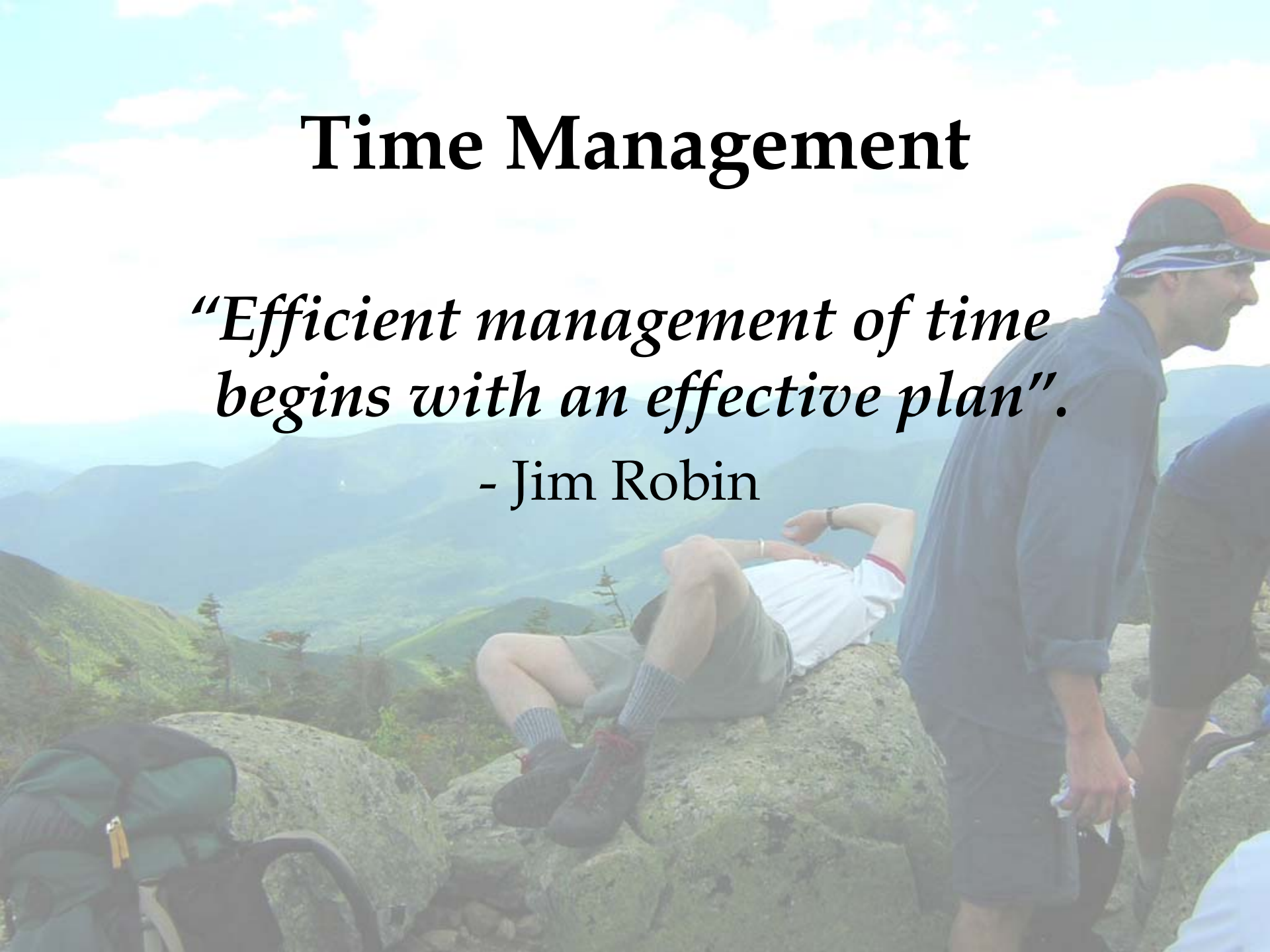
Situational Leadership

		Risk Level	
		Low	High
Skill Level	Low	Selling Consulting	Directing
	High	Engaging Laissez-Faire	Consulting Selling

Time Management

“Efficient management of time begins with an effective plan”.

- Jim Robin



Group Time Management

- Plan (set goals)
- Organize (establish priorities)
- Delegate (assign responsibilities)
- Execute (monitor progress)



Timely Time Management

- Before you start
- On the trail
- Emergencies

Planning and Preparation



Design the Trip

- Why do this trip?
- What are you going to do?
- Who do you want on this trip?
- Where are you meeting? Where are you going?
- When are you doing this?
- How are you going to get this done?

Identify Potential Problems

A person's hand is visible in the upper left, holding a large, weathered log horizontally across the top of the frame. Below the log, a river flows through a wooded area with many bare trees. In the background, two kayakers are visible on the water. One is in a white kayak, and another is partially visible in a yellow kayak on the left. The scene is slightly hazy, suggesting a misty or overcast day.

- Skill level of leaders
- Skill level of participants
- Equipment needs
- Logistical nightmares (shuttling)
- On the water hazards

Other Potential Problems

- Miscommunication
- Miscommunication
- Miscommunication
- Miscommunication



Logistics

- Advertisement or recruitment
- Registration
- Screening
- Equipment needs
- Transportation
- Participants needs
- Emergencies

Communication

A photograph of a group of people kayaking on a river. The view is from a wooden deck on the left side of the frame. The river is filled with several kayakers in various colored kayaks (blue, yellow, red, white). The river is surrounded by dense green trees and foliage. The sky is bright and clear. The overall scene is a peaceful outdoor activity.

- Getting the word out
- Conveying information to participants
- Keeping the group informed
- Keeping in touch with other leaders

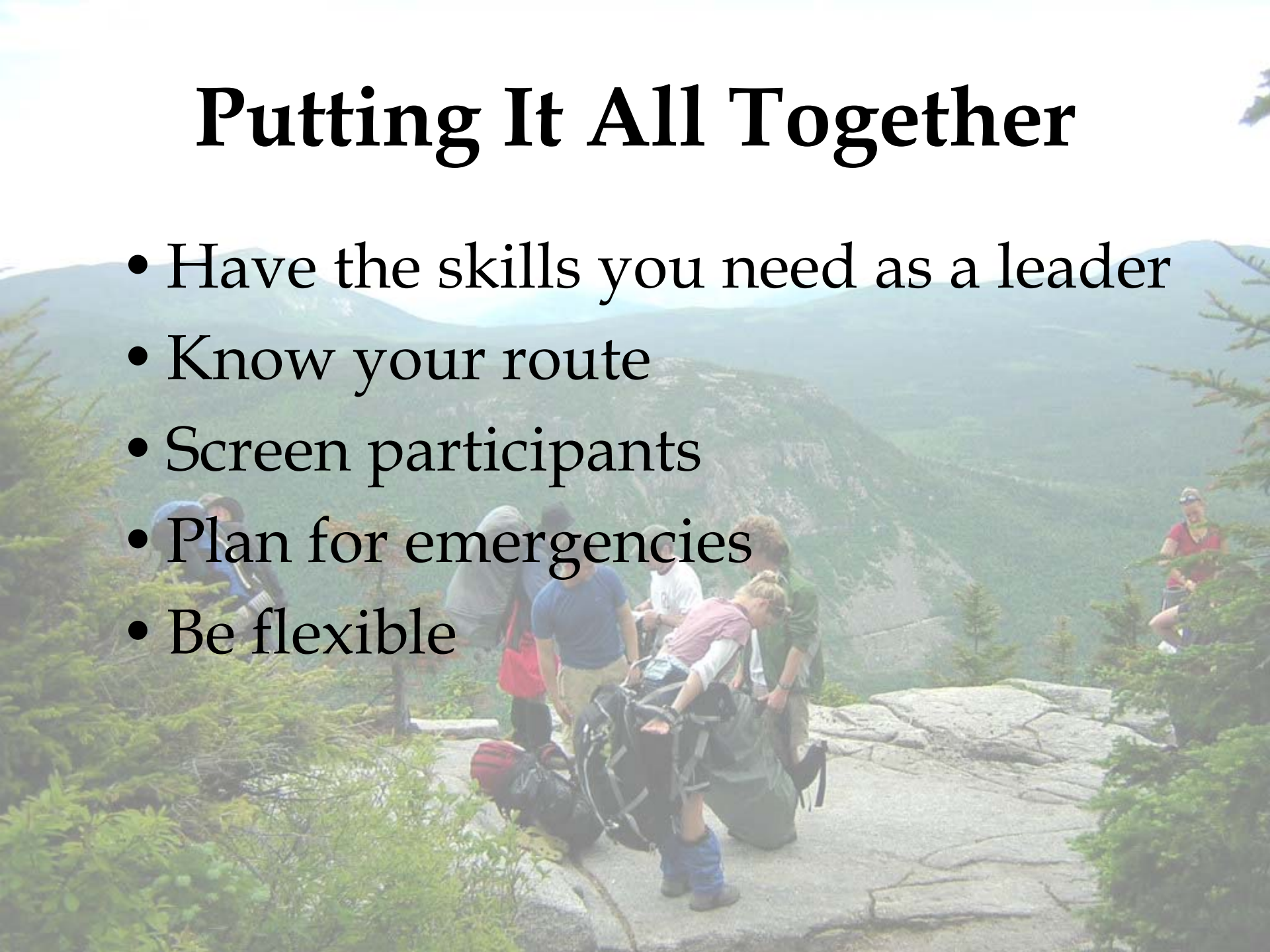
A line of pack animals, likely mules or horses, is shown carrying large, light-colored packs on a rocky, mountainous trail. The animals are moving away from the viewer towards the right. The background features rugged, rocky mountains under a clear blue sky. The overall scene is a depiction of a traditional pack train in a high-altitude, mountainous region.

Putting It All Together

*"None of us is as smart
as all of us."*

Putting It All Together

- Have the skills you need as a leader
- Know your route
- Screen participants
- Plan for emergencies
- Be flexible



Putting It All Together

- Be mindful of time (time management)
- Use common sense
- Be serious only about serious things
- Have fun

