



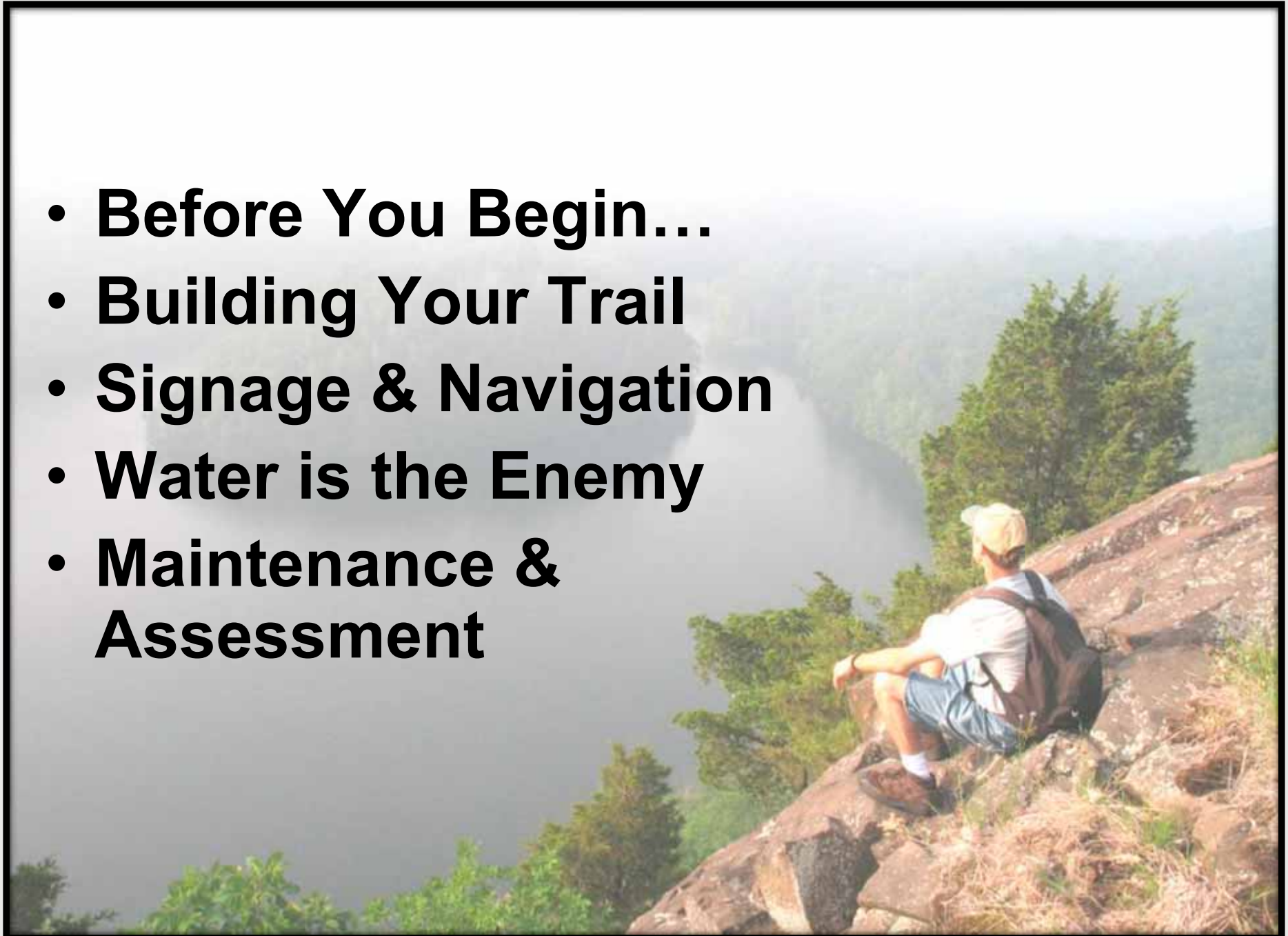
## Assessing Your Trail- Is it Built to Last?

Clare Cain

Trail Stewardship Director

Connecticut Forest & Park  
Association

- **Before You Begin...**
- **Building Your Trail**
- **Signage & Navigation**
- **Water is the Enemy**
- **Maintenance & Assessment**



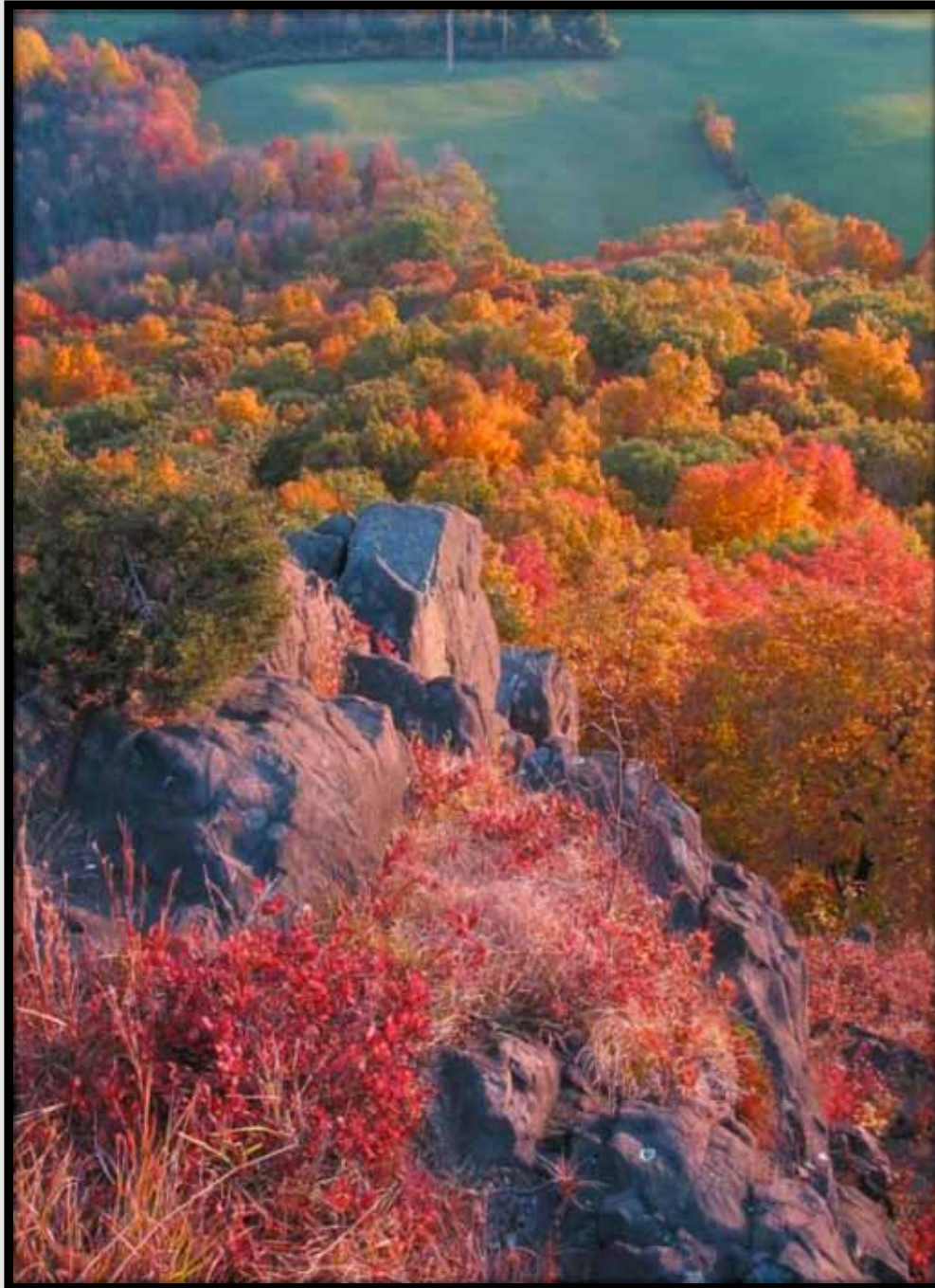


- **Before You Begin...**

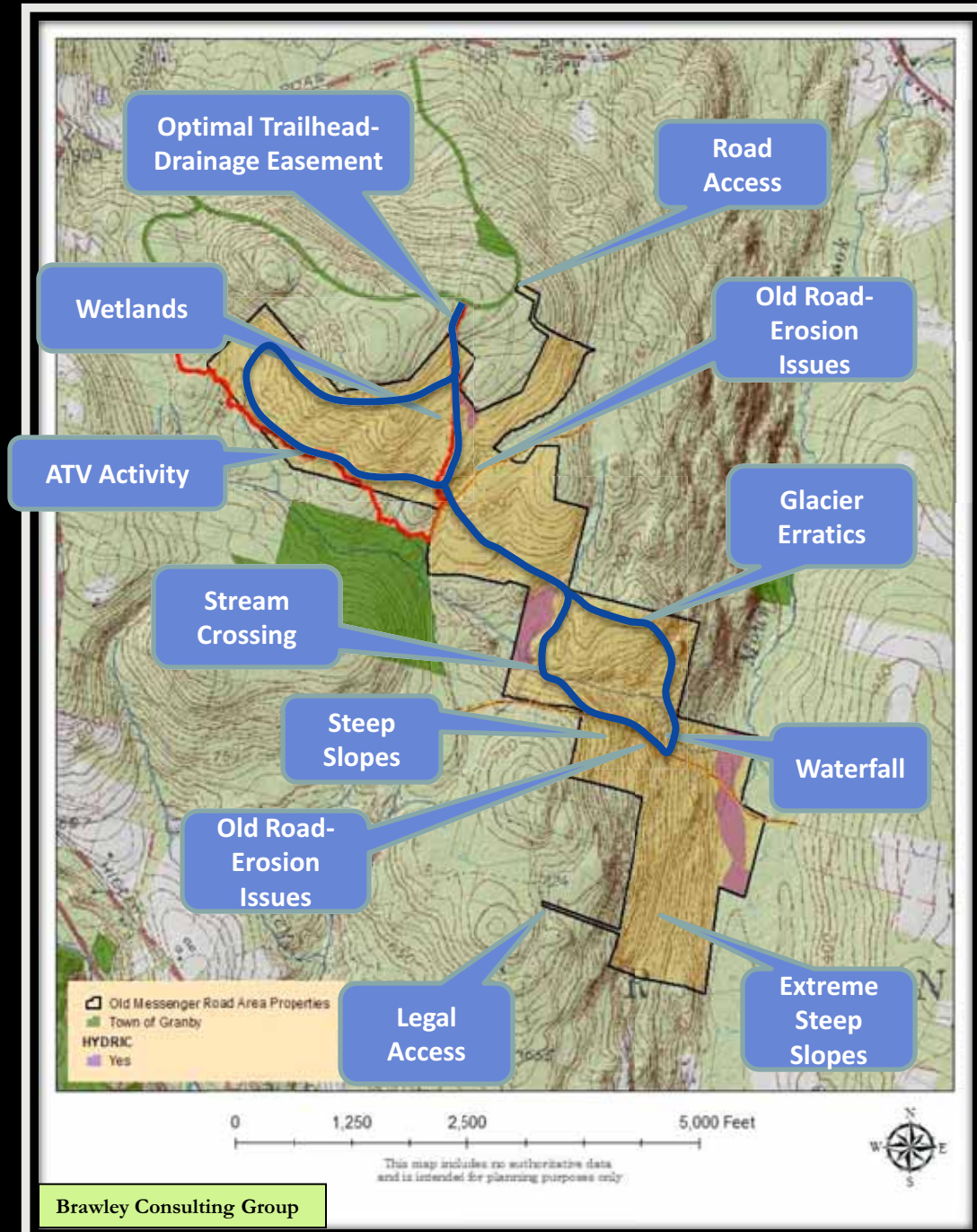


# Planning

- Property Constraints
- Grade & Water Constraints
- Who is Your User?
- Highlights
- Access/Parking
- Stewardship & Maintenance
- Existing Management Issues

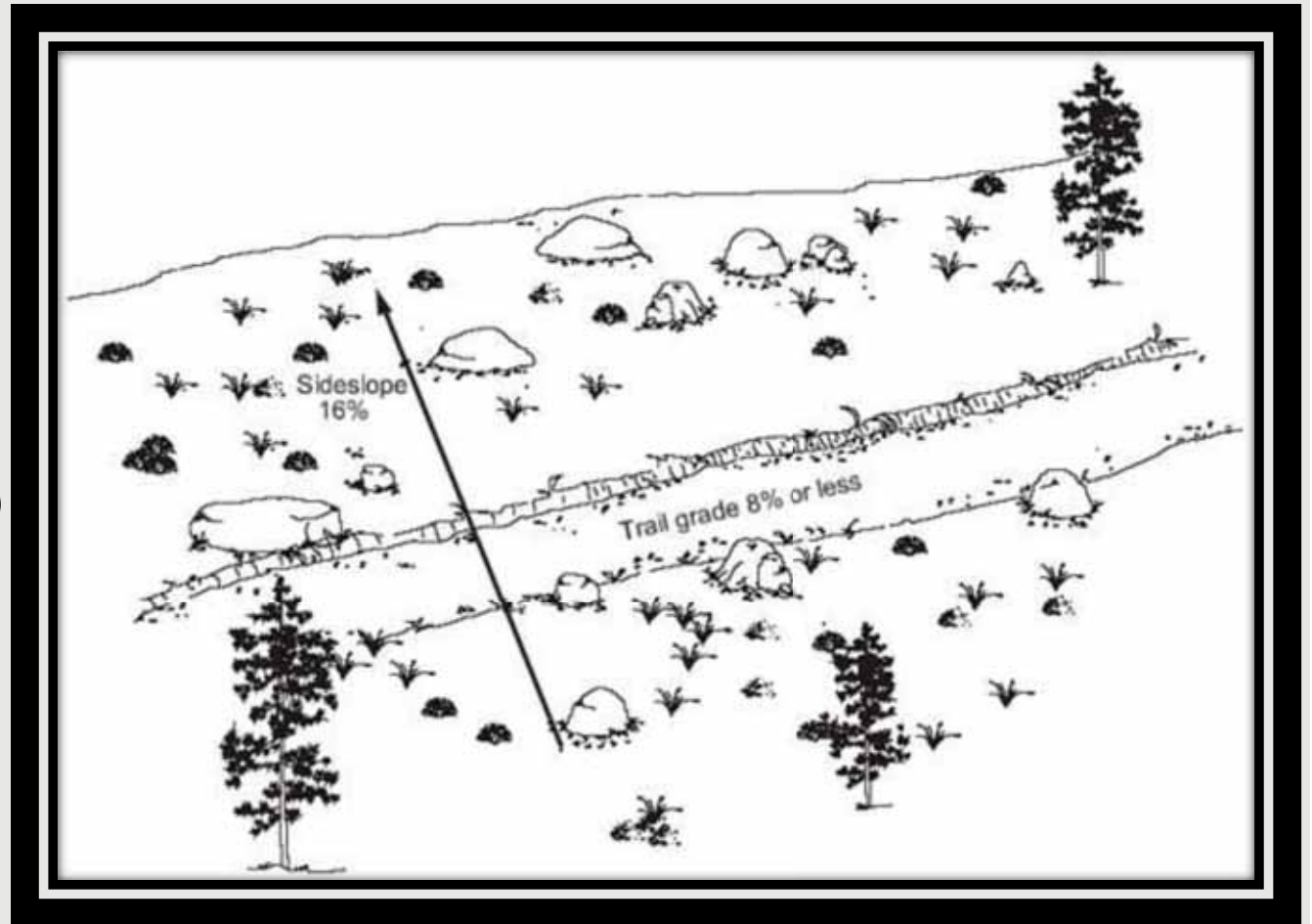






# Trail Design: Rules of Thumb

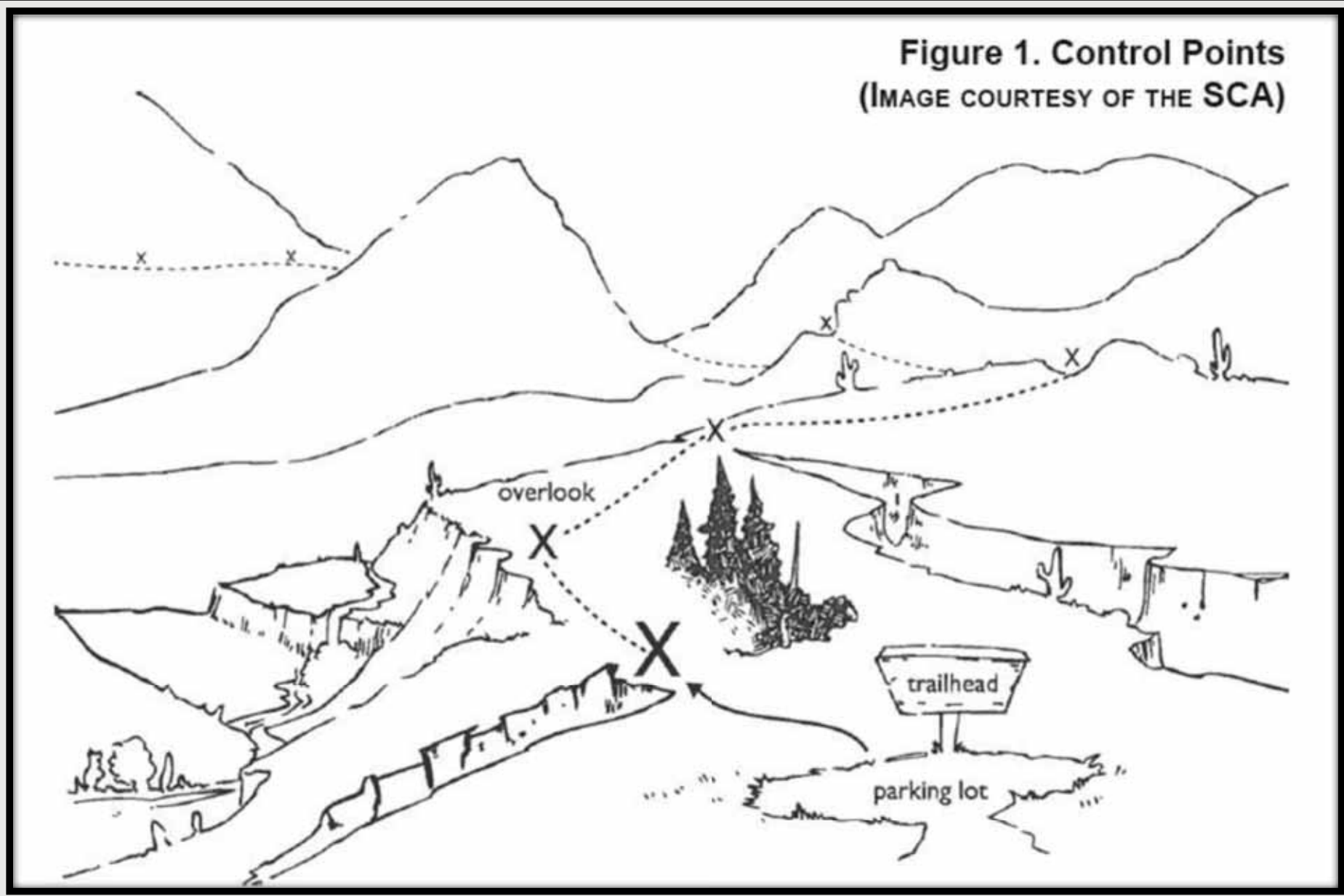
- 10% Rule  
(rise/run)
- Half-Rule  
(full grade  $\div$  2)
- Outslope (5%)







**Figure 1. Control Points**  
(IMAGE COURTESY OF THE SCA)



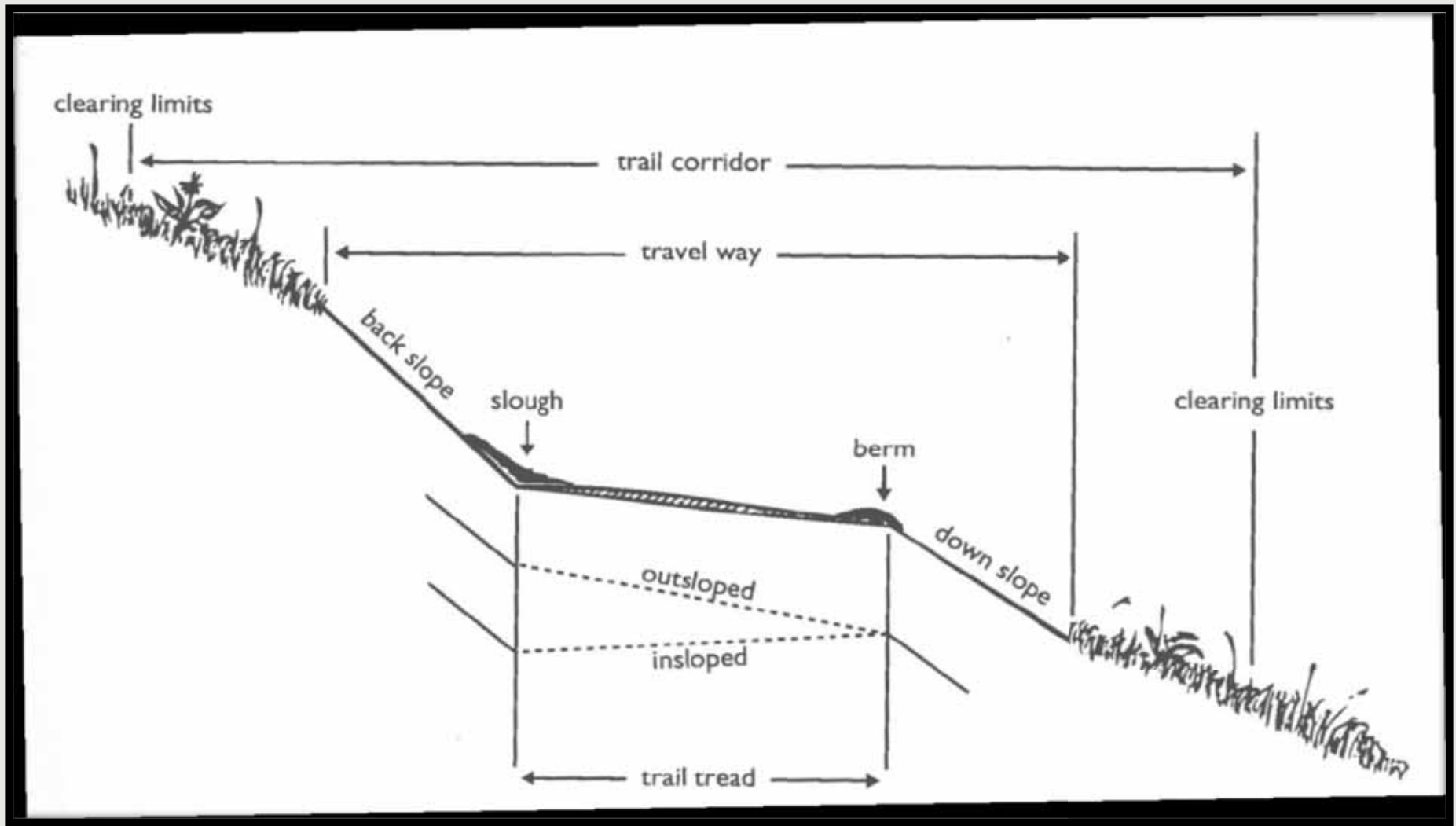




- **Building Your Trail**



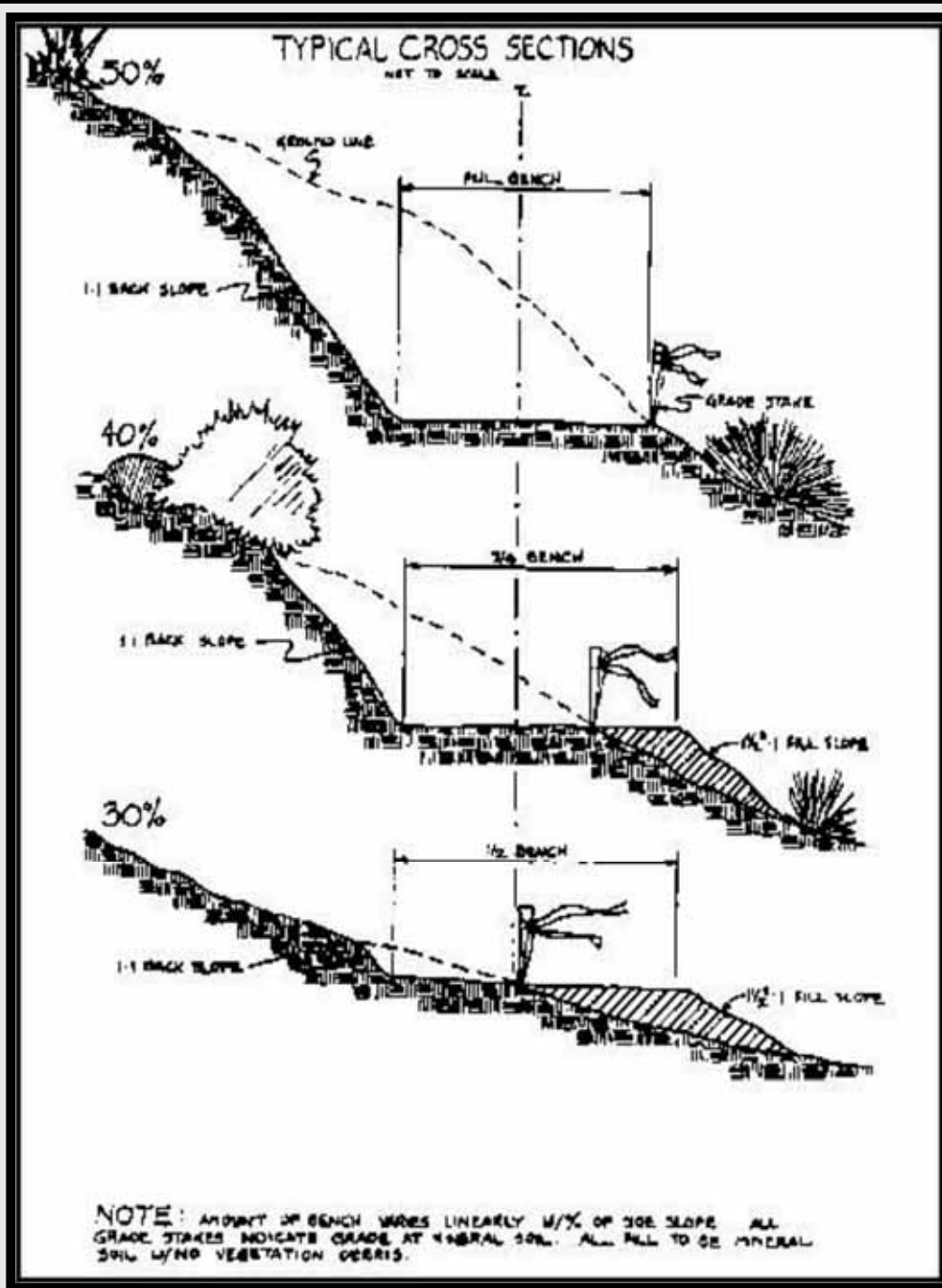




































- **Signage & Navigation**

























3

Normanwaug granite, the bedrock of this area, is characterized by the intergrowth of feldspar and quartz in a pattern resembling Egyptian hieroglyphics with large crystals of mica. It was formed as molten mass 300 million years ago.











This Trail Maintained by Volunteers  
**Blue-Blazed  
Hiking Trail**  
See CTR at [www.themadlands.org](http://www.themadlands.org)

**NARRAGANSETT  
TRAIL**







The Oswegatchie Hills  
Nature Preserve

CLARK POND

A green-framed panel containing a map on the left and a section titled "CLARK POND" on the right. The "CLARK POND" section includes several small photographs and text, likely providing information about the pond and surrounding area.



- **Water is the Enemy**





























































- **Maintenance & Assessment**



















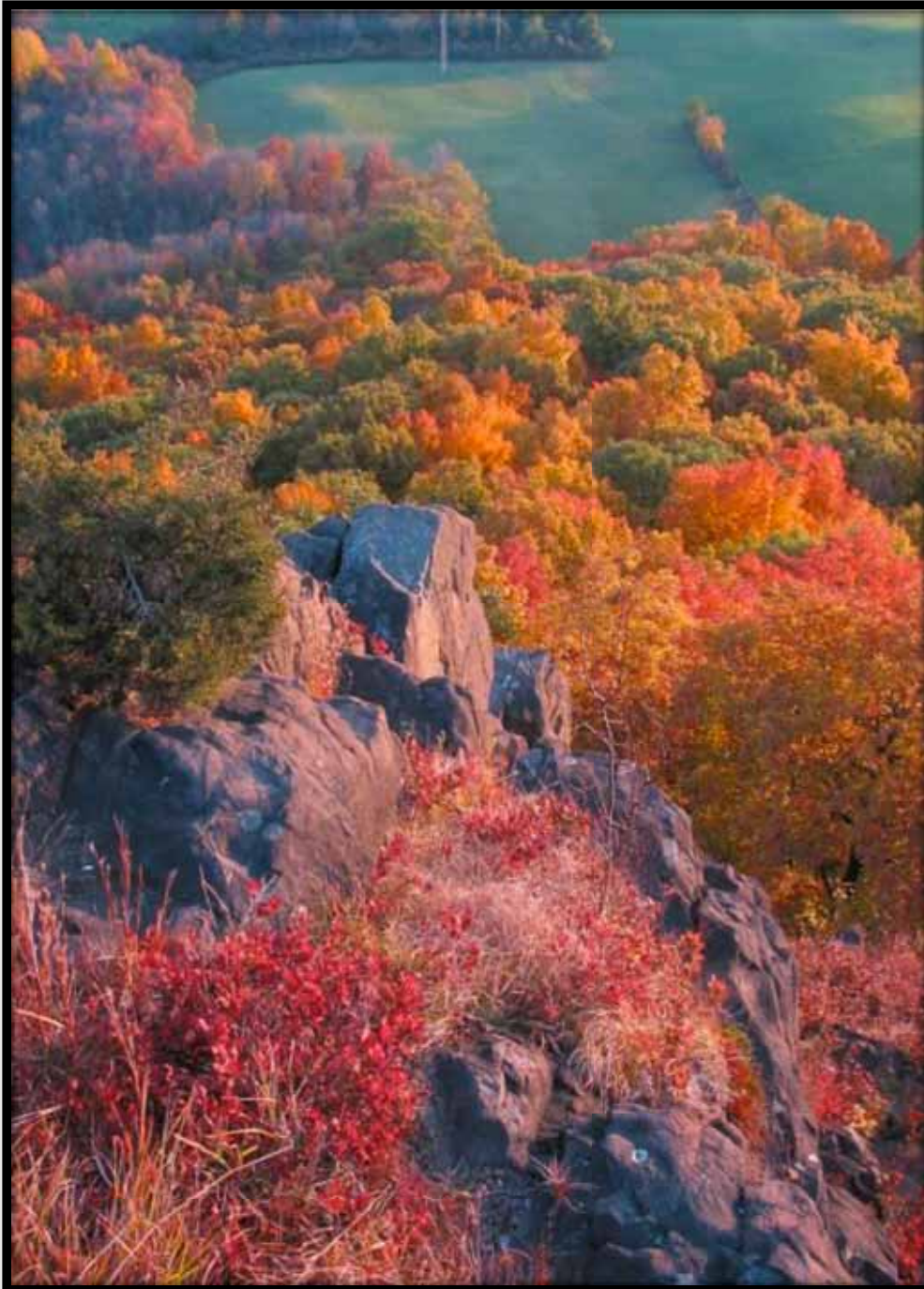


# Seasonal Evaluation

- Walk-thrus
- Monitor Wet Areas
- Re-stock Info
- Work parties
- Trails Trainings
- Annual Assessment







## Common Oversights

- Poor Layout
- Inadequate Signage & Blazing
- Access & Visitor Management
- Half-Baked Bench
- User group?
- Temporary Fix
- Old Roads
- Accessibility

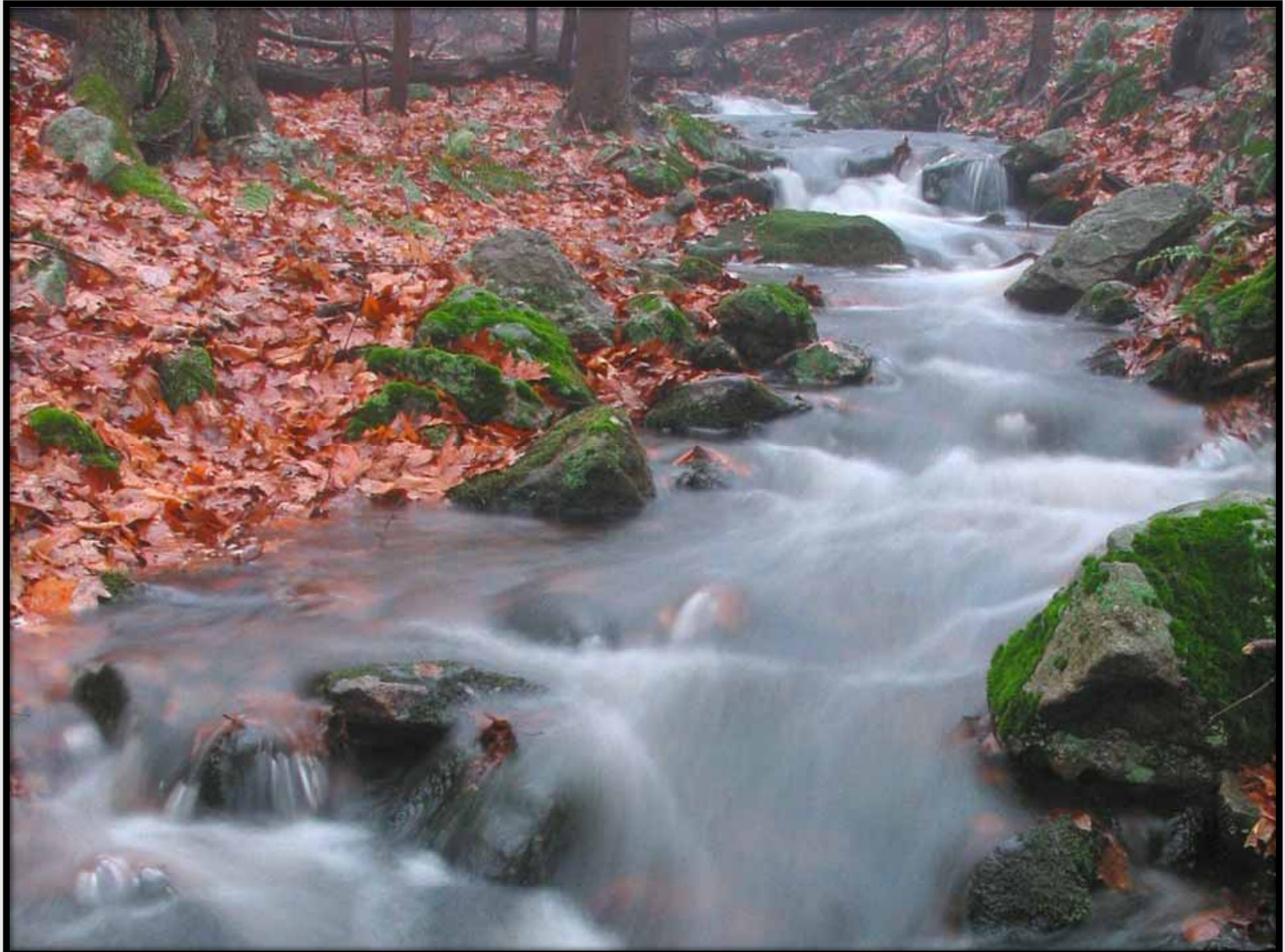




















Thank you!