

Stewarding our Protected Lands:

New Tools to Meet New Challenges

- Intro / Background on CSC (10 min)
 - Overview of Past Projects

- Projects Completed in 2011 (45 min)
 - Legislative Initiatives (L. Taft)
 - Baseline Documentation Reports (P. August)
 - Ecological Communities Atlas (P. August)
 - Invasive Preparedness (D. Gregg)
 - Student Conservation Program (D Gregg)

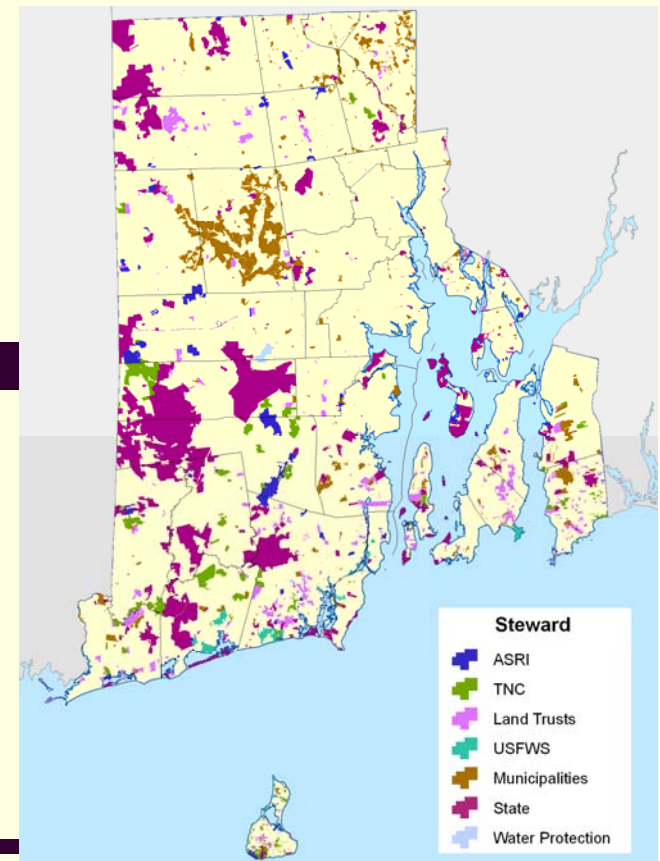
- Announce 2012 Projects (L. Taft 5 min)

- Feedback & Ideas for future projects (All 15 min)

Conservation Stewardship Collaborative - CSC

MISSION

The Conservation Stewardship Collaborative (CSC) works to advance long-term protection and stewardship of terrestrial, aquatic, coastal, estuarine, and marine areas in Rhode Island that have been conserved by fee, easement, or other means.



Who is the CSC?

The Nature Conservancy

Audubon Society of RI

The Rhode Island Natural History Survey

The Land Trust Council

The US Fish and Wildlife Service

The RI DEM

URI



What does the CSC ...

... do?

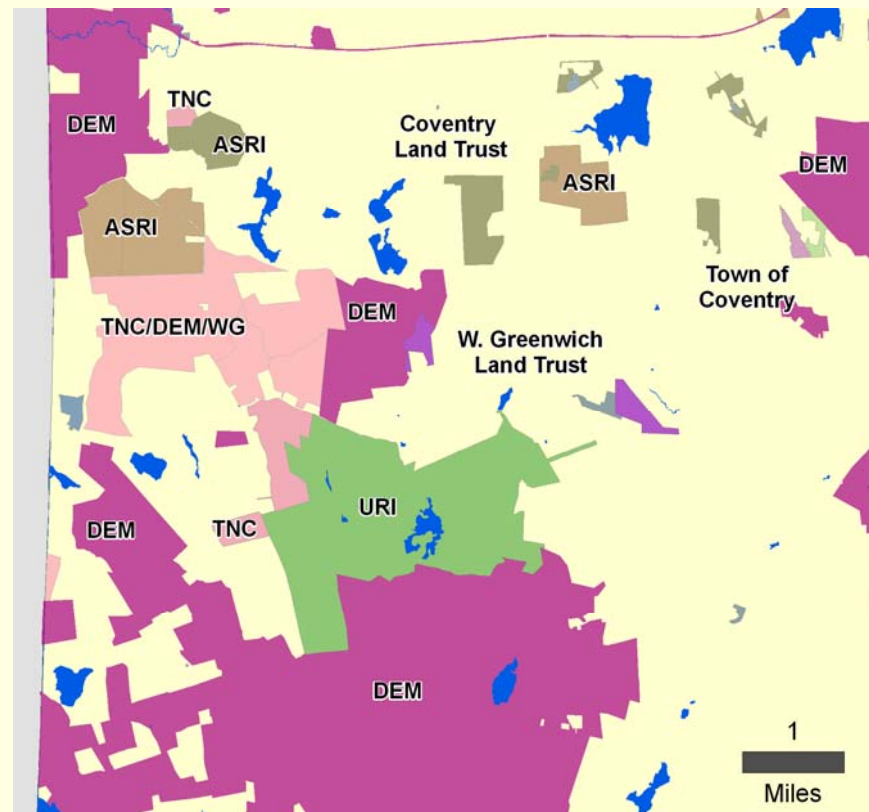
- Promotes efficiency through cooperation and collaboration
- Promotes better stewardship through data sharing
- Promotes better protection of land and easement records, stronger legal standing of properties, and appropriate use of protected lands
- Training and development of standards

... not do?

- **Give grants**
- **Have a staff**
- **Create a new institutional entity**
- **Compete with other conservation organizations**
- **Address issues of developed recreational open space (ball fields, golf courses, etc.)**

Why Do We Need to Work Together

- Our landscape of protected lands is complex
- Threats can appear suddenly and spread



The fundamental principles of the CSC are to:

- **Monitor and steward conservation areas** to retain their long-term viability as places where **fauna, flora, and ecosystem services are protected.**
- Monitor and steward conservation areas to **retain the cultural and aesthetic characteristics** that were the basis of their protected status.
- Steward each protected property in a manner that is **consistent with the larger, landscape-scale network of adjacent or nearby protected areas.**
- **Foster cooperation, collaboration, and partnering among conservation organizations** in order to effectively and efficiently steward our network of protected areas.
- **Protect conservation areas from legal and political threats** to their protected status as well as ecological threats to their conservation values.
- **Disseminate broadly the decisions made, lessons learned, practices adopted, and knowledge acquired during CSC programs.** Internet and web-based technologies will be used whenever possible to ensure broad and rapid dissemination of CSC knowledge.
- **Involve citizen volunteers and students in on-the-ground activities to ensure successful, sustainable stewardship.**
- **Draw from and contribute to coordinated databases of information relevant to the stewardship of conservation areas.** The CSC shall work to ensure that these data are maintained in secure and well-managed databases, and are available to the conservation community to support stewardship activities.
- Be nimble and responsive to unanticipated threats (environmental, political, and legal) to conservation areas, but also capable of **sustained focus on priority projects.**

What Kinds of Projects?

- The CSC is especially interested in supporting the implementation of approaches to stewardship and monitoring that have potential for replication and expansion by other organizations.

2009 Projects

- Updating and Maintaining RI's Conservation Lands Database (RINHS)
- Stewardship Web Portal www.landandwaterpartnership.org
 - [On-line Library of Resource Materials](#) – The Partnership, in collaboration with the RI Conservation Stewardship Collaborative, has created and maintains an extensive library of web-based "how to" information to support conservation, management, and stewardship.
- Developing Protocol for Inventorying, Monitoring, and Managing Natural Resources on Conservation Lands (ASRI)
 - "B-DIP" the bee-ginning
- Legislative & Policy Initiatives in Support of Land Conservation and Stewardship (RILTC)
- Invasive Species Preparedness (RINHS)

2010 Projects

- RI Natural Heritage Data Management Renewal (RINHS)
- Ecological Communities Database Protocol and Nomenclature Project
 - *To be presented in more detail later in this workshop*
- Application of B-DIP protocol @ four land trust sites
 - (all posted on CSC and Land and Water web sites)
- Invasive Species Preparedness (RINHS)
- Stewardship Podcast and YouTube Video Production (RINHS)
 - Shown at last year's Summit
- Legislative and Policy Initiatives in support of Land Conservation and Stewardship (RILTC)

2011 Projects

- Developing Standards for Baseline Inventories (RINHS)
 - *Presented in more detail in this session*
- Enhancing Land Management through Collaborations (ASRI)
- Student Conservation League (RINHS)
 - *Presented in more detail in this session*
- Invasive Species Preparedness (RINHS)
 - *Presented in more detail later in this session*
- Legislative and Policy Initiatives in support of Land Conservation and Stewardship (RILTC)
 - *Hand out*
 - *PAUSE HERE*

Ideas Generated by Participants at 2011 Land and Water Summit

- Centralized documentation for rare and endangered species.
- Engaging youth in conservation work
 - – sustaining this program.
- Standardized signage among conservation properties.
- Invasive species control
 - - volunteer engagement and training
- Enhancing stewardship on municipally owned lands.
- Collaborations on “bigger projects”
 - e.g. wetland restoration.

What's in the Works for 2012?

- Ecological Community Classification
 - Develop on-line atlas with representative photos of each community type
- Sign Standards for Trails and Conservation Lands
- Legal Ramifications of using remote cameras on public trails
- Legislation and Policy Support (RILTC)
- On-Line Trail Mapping
- Invasive Species Preparedness
 - Developing a web portal and liaison to State Wildlife Action Plan(RINHS)

What's Next?

- Discussion 15 – 20 minutes
 - Feedback from you regarding what is important or problematic in your conservation stewardship work
 - Brainstorm more ideas for future projects

To Find out More

- The CSC website:
 - www.ricsc.org
- Stewardship Web Portal www.landandwaterpartnership.org
 - [On-line Library of Resource Materials](#) – The Partnership, in collaboration with the RI Conservation Stewardship Collaborative, has created and maintains an extensive library of web-based "how to"