

The Ultimate Goal



MONITORING

Are our management plans
having the desired effect?

Conservation Stewardship Collaborative - CSC

The Ultimate Goal



MONITORING

Are our management plans having the desired effect?



MANAGEMENT PLAN

What do we want to achieve with this property?

Conservation Stewardship Collaborative - CSC

The Ultimate Goal



MONITORING

Are our management plans having the desired effect?



MANAGEMENT PLAN

What do we want to achieve with this property?



BASELINE DOCUMENTATION REPORT

What is on the property and what are the management issues?

Conservation Stewardship Collaborative - CSC

Providing Guidance to Land Trusts on the Land Management Process

Conservation Stewardship Collaborative
Inventorying, Monitoring, and Managing Natural Resources on Conservation Lands



December 2009

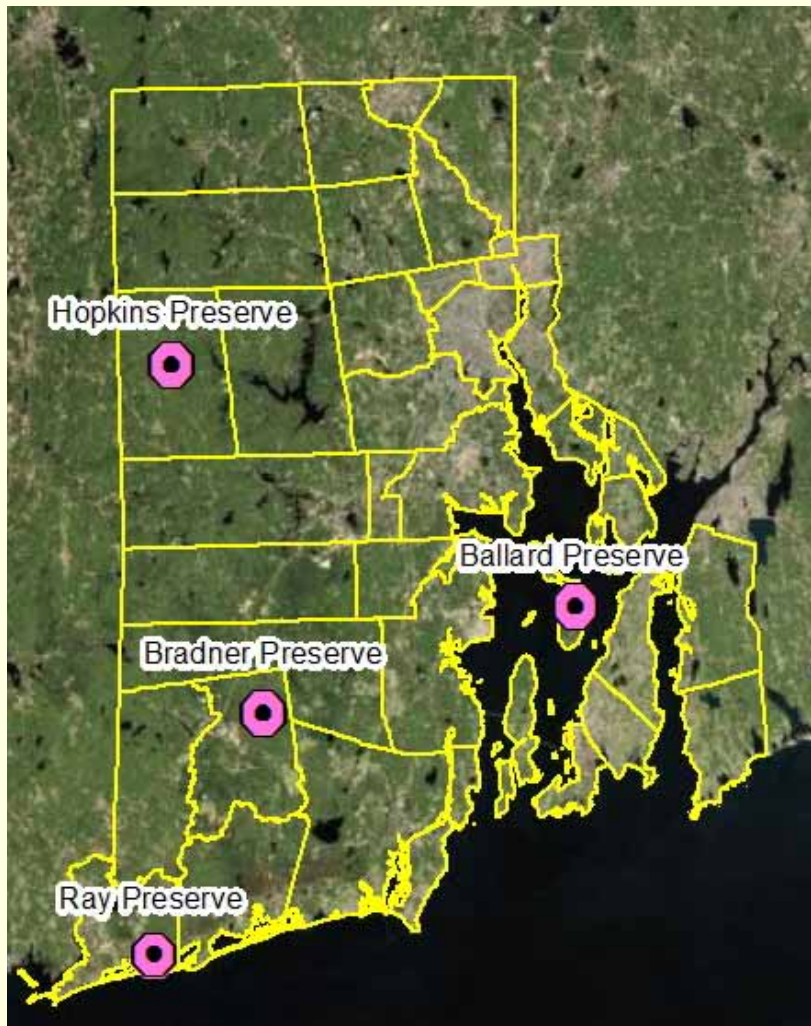
Scott Ruhren, Ph.D.
Senior Director of Conservation



See projects at
www.ricsc.org

Conservation Stewardship Collaborative - CSC

Test the Protocol



Rhode Island
Conservation Stewardship Collaborative
PROJECTS

Overview	Additional Information	Partners*	Budget
2009 Projects (Completed)			
Stewardship Resource Library	Land and Water Partnership Resource Library	DEM, TNC, URI, Bruce Hooke webmaster	\$8,000
A Protocol for Conducting Baseline Inventories and Conservation Land Inventories	CSC Baseline Documentation and Inventory Protocol	ASRI	\$8,000
Updating the RI Protected Lands Database		DEM, TNC	\$5,000
Legislative & Policy Initiatives in Support of Land Conservation and Stewardship	Summary of Activities in 2009	LTC	\$14,000
Invasive Species Preparedness		RINHS	\$11,000
2010 Projects			
Legislative and Policy Initiatives in Support of Land Conservation and Stewardship		LTC	\$18,200
Implementing the RI CSC Baseline Documentation and Inventory Protocol (BDIP)	BDIP Reports: Ray Preserve Bradner Preserve Ballard Preserve Hopkins Preserve	URI, RINHS, LTC, LTs	\$7,200

See projects at
www.ricsc.org

Conservation Stewardship Collaborative - CSC

Sample BDR's

HOPKINS PROPERTY, FOSTER
FOSTER LAND TRUST
BASELINE DOCUMENTATION REPORT

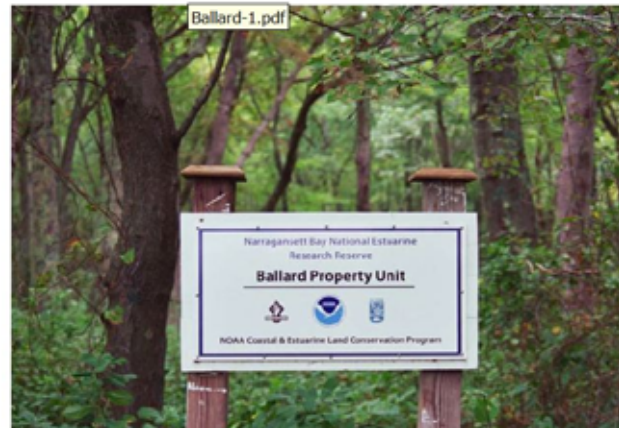


BRADNER PRESERVE, RICHMOND
RICHMOND RURAL PRESERVATION LAND TRUST
BASELINE DOCUMENTATION REPORT



BASELINE DOCUMENTATION REPORT
Ray Preserve
Westerly, Rhode Island

BASELINE DOCUMENTATION REPORT
Ballard Property
Prudence Island, Portsmouth, Rhode Island



See projects at
www.ricsc.org

Conservation Stewardship Collaborative - CSC

Next: Version 2 BDR Protocol Protocol to Establish Management Plans

Request for Proposals

Piloting the RI Conservation Stewardship Collaborative Land Management Planning Protocol

Does your land trust have a property or conservation easement that needs baseline documentation and a management plan prepared? Here is your chance to get professional consulting support and to help test and refine the protocols being developed by the RI Conservation Stewardship Collaborative for use by

Natural Communities of Rhode Island: The Problem



Rich Diversity of Ecological Communities

Poor Resolution of the Types of Communities in RIGIS LULC Dataset



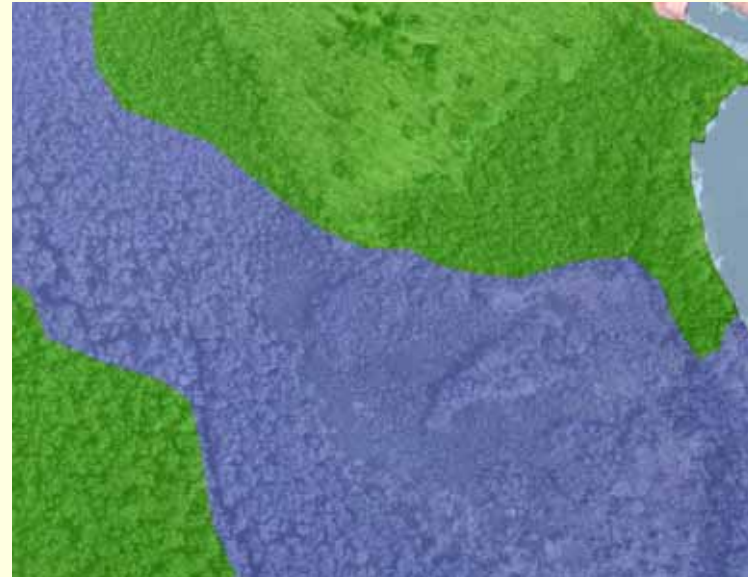
Land Cover (RIGIS)

- Deciduous Forest (>80% hardwood)
- Developed Recreation (all recreation)
- Mixed Forest
- Water
- Wetland

Natural Communities of Rhode Island: The Problem



Rich Diversity of
Ecological Communities



Poor Resolution of the
Types of Communities in
RIGIS LULC Dataset

Conservation Stewardship Collaborative - CSC

The Solution



2011 RI DEM 6" 4 band
Imagery



Near Infrared band

How Do We Classify Our Communities?



Conservation Stewardship Collaborative - CSC

How Do We Classify Our Communities?

Rhode Island Ecological Communities Classification

By

Richard W. Enser



Coastal Plain Peatland, Graminoid Fen, Great Swamp Management Area

Final System is:

Based on

1. Northeastern Terrestrial Wildlife Habitat Classification (NTHC)
2. Enser, R.W. and J.A. Lundgren. 2006. Natural Communities of Rhode Island (NCRI)

Mapable

Compatible with region

Flexible

Hierarchical

RI Natural History Survey
David Gregg

RI Department of Environmental Management
Janet Coit, Cathy Sparks, Chris Raithe, Brian Tefft, Paul Jordan, Bruce Payton, Charles Brown

University of Rhode Island
Peter August, Charles LaBash

The Nature Conservancy
Scott Comings, Kevin Ruddock

Supported by:

Rhode Island Conservation Stewardship Collaborative

Conservation Stewardship Collaborative - CSC

Next Steps?

Web Atlas of Photos and Representative Sites

Developing a Digital Map of Communities

