

Living Shorelines

*Non-structural Erosion Control Practices
Rhode Island Land & Water Summit, 2014*



The Nature Conservancy
Protecting nature. Preserving life.™



D. Steven Brown ⁽¹⁾
Kevin Ruddock ⁽¹⁾
Rhonda Smith ⁽²⁾
The Nature Conservancy
United States Fish and Wildlife Service

**Project
Supported By:**



Outline

- Setting the Stage
- Traditional Protection Strategies
 - Structural vs. non-structural
- Evolving Shoreline Practices
 - Concepts and techniques
- Narrow River Pilot Project
 - Site suitability
 - Permits and regulations
 - Project Timeline

Setting the Stage

Rhode Island's changing coastline

- **Historical habitat loss**
 - 50% decrease in saltmarsh habitat, 4,000 acres (Bertness 2006)
 - 91% loss of shellfish reef habitat, 750 acres (Brown 2013)
- **New challenges**
 - Sea level rise
 - Wetlands can keep pace with up to 2.5 mm of sea-level rise per year
 - Coastal erosion
 - Accelerated by storm surge, wave energy, and chronic human-use impacts such as boat wakes



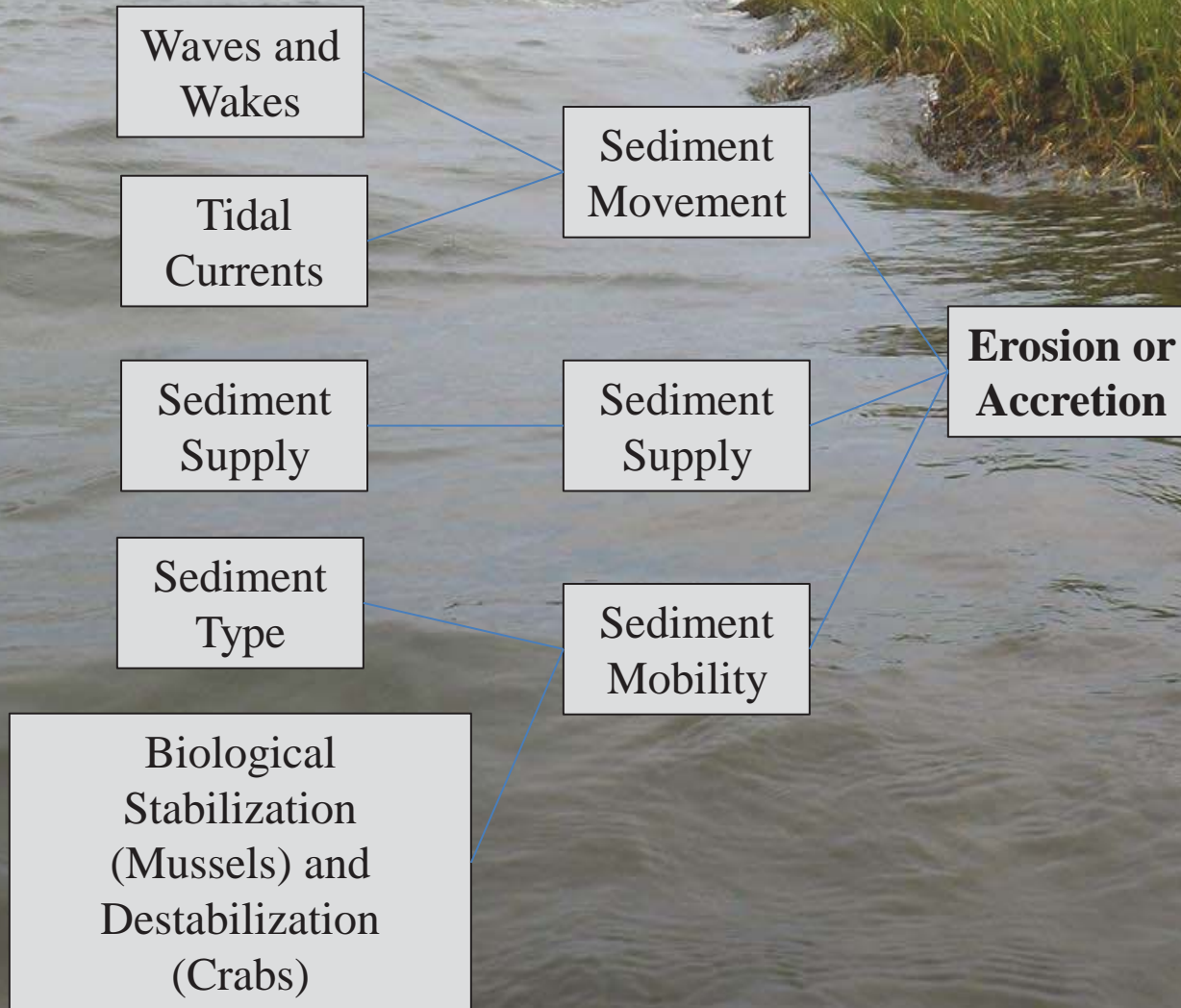
Image: wetland peat beneath an exposed tidal flat, evidence of sea-level rise and landward migration of the shoreline, ©Brown, TNC



Image: eroding fringe marsh and remnant peat colonized by mussels, evidence of marsh loss, ©Brown, TNC

Marsh Erosion is Natural

...in a balanced state



Shoreline Protection

Hard/Structural Practices

- **Definition**
 - Erosion control practices using hard structures that armor and stabilize the shoreline
- **Examples**
 - Bulkheads, concrete seawalls, rip-rap, groins, breakwaters, stone reinforcement
- **30% of RI's shoreline is armored** (Hehre, 2007; Freedman, 2012)
 - 30% of Narragansett Bay
 - 20% of South County and Washington County





Shoreline Protection

Hard/Structural Practices

- **Potential Benefits**

- Can slow down rates of landward erosion, particularly in high energy environments (NOAA, 2009)

- **Potential Drawbacks**

- Often exacerbates erosion seaward of hardened structure
- Impacts wetland and intertidal habitat
- Interferes with coastal access
- Diminishes coastal processes and services

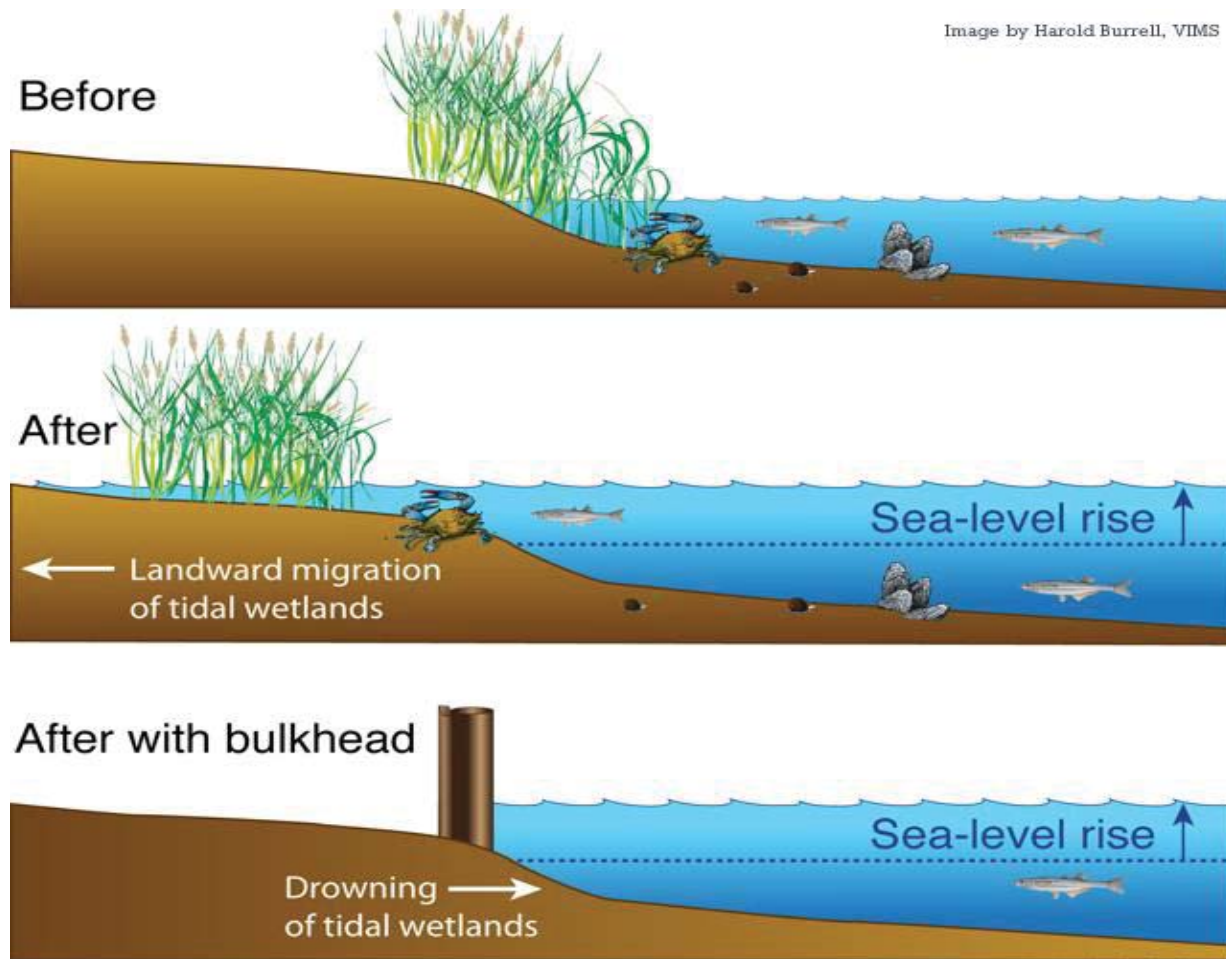
Shoreline Protection

Detroit riprap



Shoreline Protection

Hard/Structural Practices



Hard structures preclude landward migration of tidal wetlands,
©Harold Burrell

Shoreline Protection

Soft/Non-structural

- **Definition**

- Shoreline erosion control and restoration practices using only plantings and organic materials to restore, protect or enhance the natural shoreline environment

- **Examples**

- Vegetation plantings (marsh, submerged aquatic vegetation, dune grasses), coir fiber logs and matting, coir wattle, oyster shell substrate, live oysters and ribbed mussels

Shoreline Protection

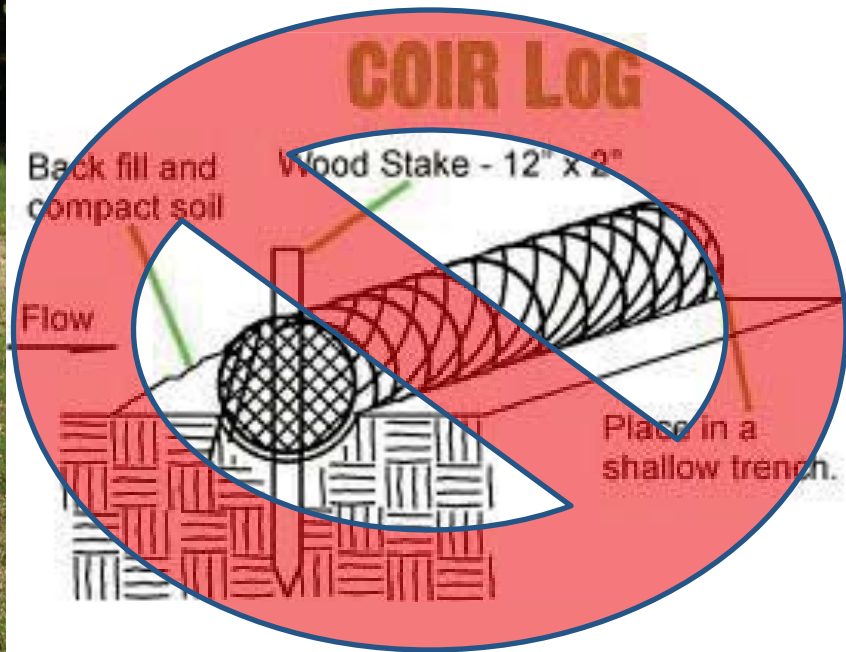
Soft/Non-structural

- **Potential Benefits**

- Reduce bank erosion and property loss
- Provide an attractive natural appearance
- Improve marine habitat & spawning areas
- Improve water quality and clarity

- **Potential Drawbacks**

- Not suitable for high energy environments
- Requires ongoing maintenance
- Typically requires trained contractors who may be less familiar with soft stabilization techniques



Coir Log Warning!

- Use only premium coir logs
- Re-wrap logs in high fiber matting
- Don't spear the logs, double stake on either side
- Secure stakes with nylon not fiber rope
- Don't place logs directly in front of marsh banks, must be set at least 2-ft from bank

Protection Strategies

Soft/Non-structural

What not to do!



What to do!

DELSI project

- **Goal:** develop strategies for Delaware Bay that incorporate local native vegetation and shellfish
- **Design:** installed multiple configurations of coir log and mat
- **Results:** vegetative treatments attenuated waves, reduced erosion, trapped sediments, produced micro-phytobenthos, attracted ribbed mussels
- **Optimal Configuration:** two rows of logs over mat with shell bags in front

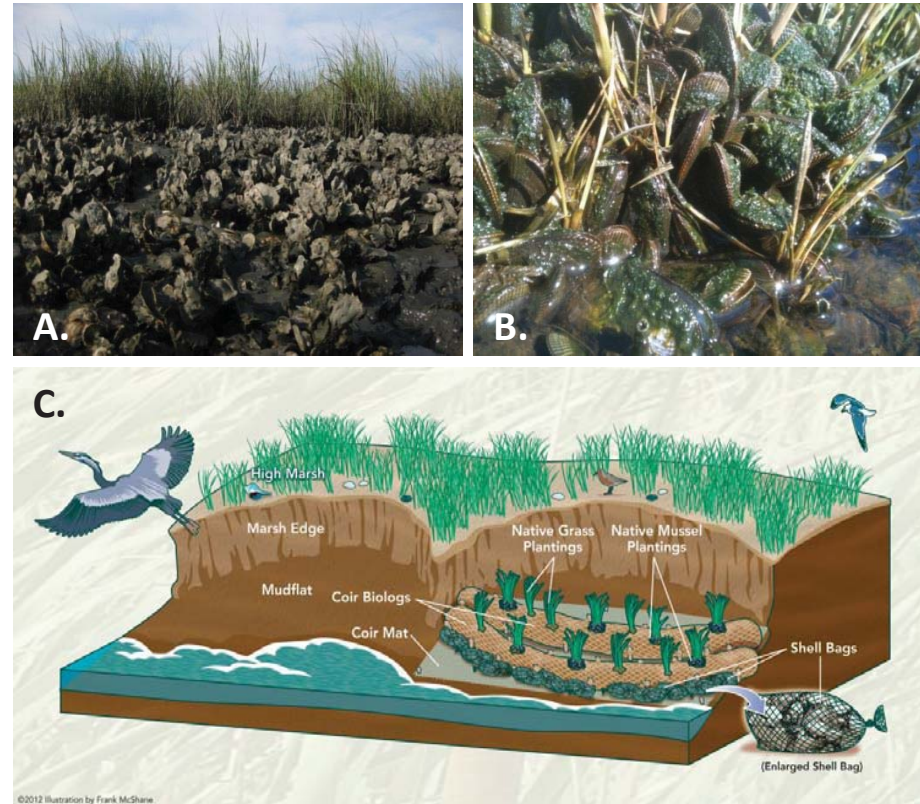


Coir logs DELSI design



Shellfish Reefs

- Natural integration into saltmarsh habitat
- Enhance sedimentation
- Sedimentation is a factor of sediment supply and reef design (height, width)
- Reduces re-suspension and improves water clarity
- Not the solution to shoreline protection but can protect marsh habitat and enhance ecosystem services (e.g., fish production, denitrification)



A. Oyster reef and **B.** ribbed mussel reef complex associate with saltmarsh habitat (©Brown, TNC). **C.** Conceptual plan for living shoreline practices (©DELSI).



Shellfish Reefs

Ecosystem Services

- **Habitat enhancement** – complexity and vertical structure provides food and refuge, stimulates abundance and diversity
 - **\$1,669 to \$14,170** acre-year (Grabowski & Peterson 2007)
- **Nutrient removal** – assimilation, denitrification, burial – eutrophication mitigation
 - **\$560 to \$2,719** acre-year (Kellog 2011)
- **Benthic stabilization** – erosion prevention, sediment enhancement and deposition, nutrient deposition
 - **\$14,574 to \$34,817** acre-year (Kroeger and Guannel 2013)
 - **Wave height reduced by 51-90°**
 - **Wave energy reduced by 76-99°**

Vertically Complex Reefs

Sedimentation rates

- High relief reef attenuated waves and enhanced sedimentation landward of reefs
- High relief reefs (50 cm): 56 to 122 g m⁻²/week
- Low relief reefs (15 cm): 22 to 36 g m⁻²/week
- Varies by sedimentary landscape
- Oyster settlement and survival was a magnitude higher on high relief versus low



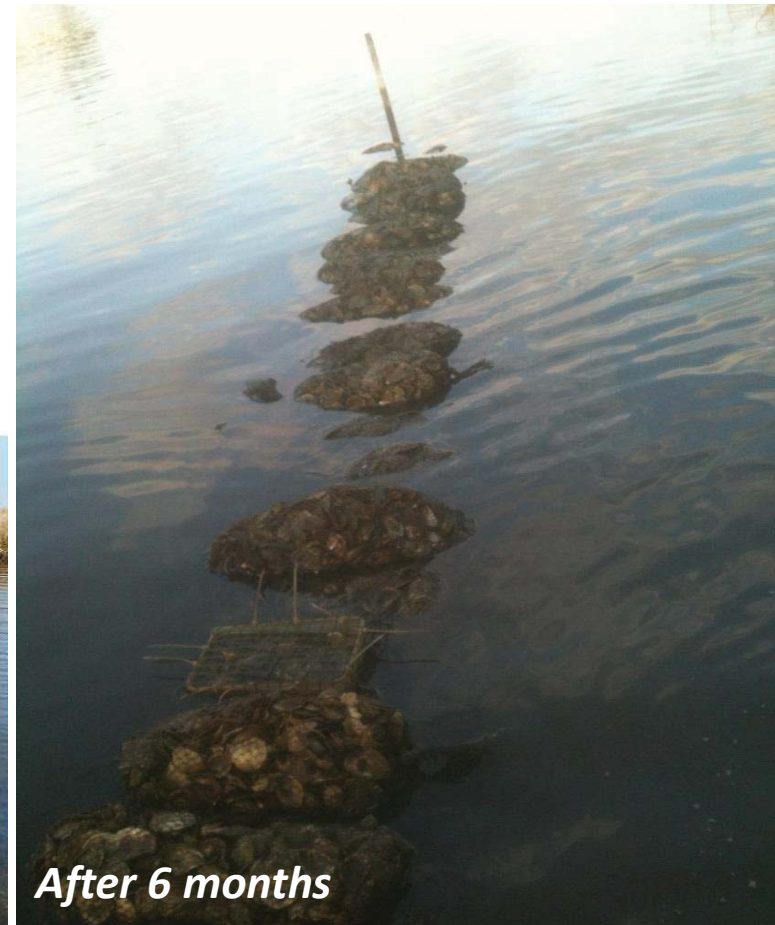
Materials needed for 50-ft. oyster sill, ©Brown, TNC.



Recruitment



After 18 months



After 6 months

Oyster Sill *Bagged Shell*



Oyster Sill *Bagged Shell*





Alternative Substrates

Oyster Castles



Alternative Substrates

Oyster Castles



Alternative Substrates

Oyster Castles



Alternative Substrates

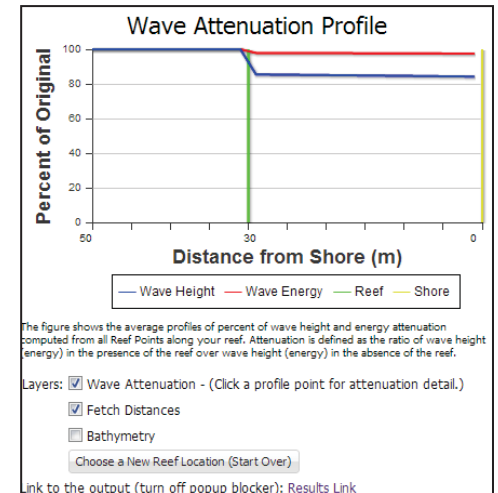
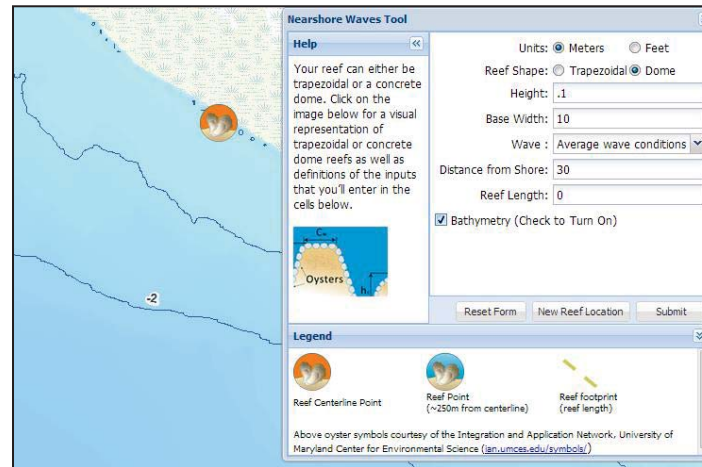
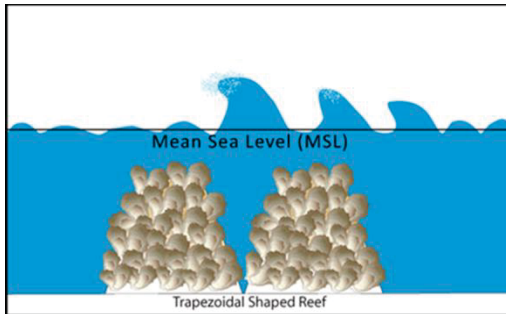
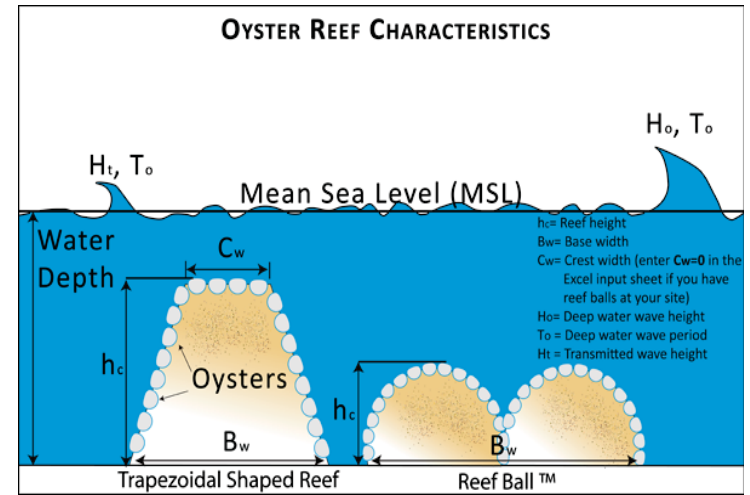
Oyster Castles



Shellfish Reef Design

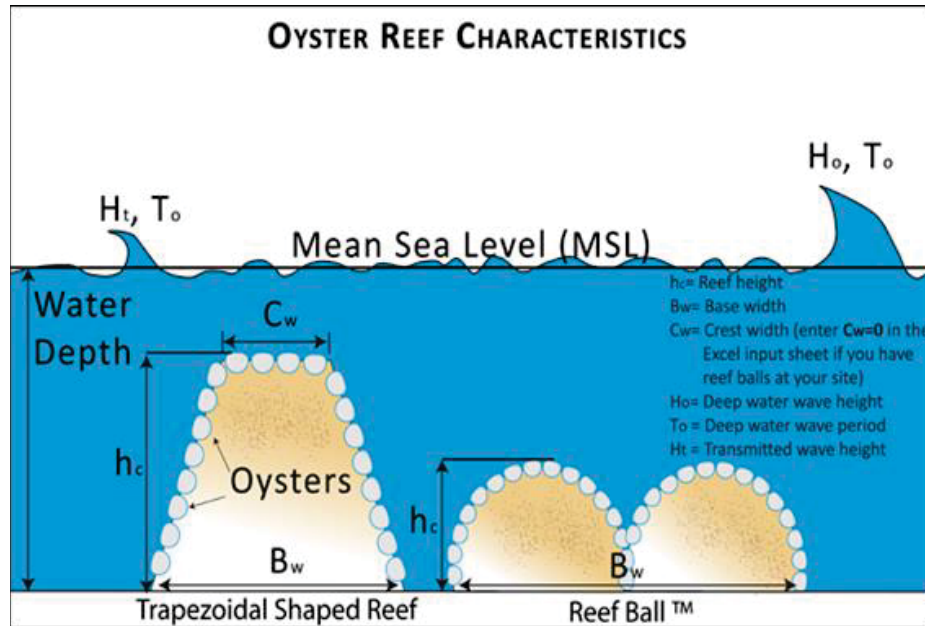
Wave Attenuation

- Nearshore Waves Tool
- Attenuation is a function of the incident wave height, reef physical characteristics (height, crest and base width), as well as its location along the 1D profile
- Reefs close to the water surface can be quite efficient breakwaters and transmit 3% of the incident wave height

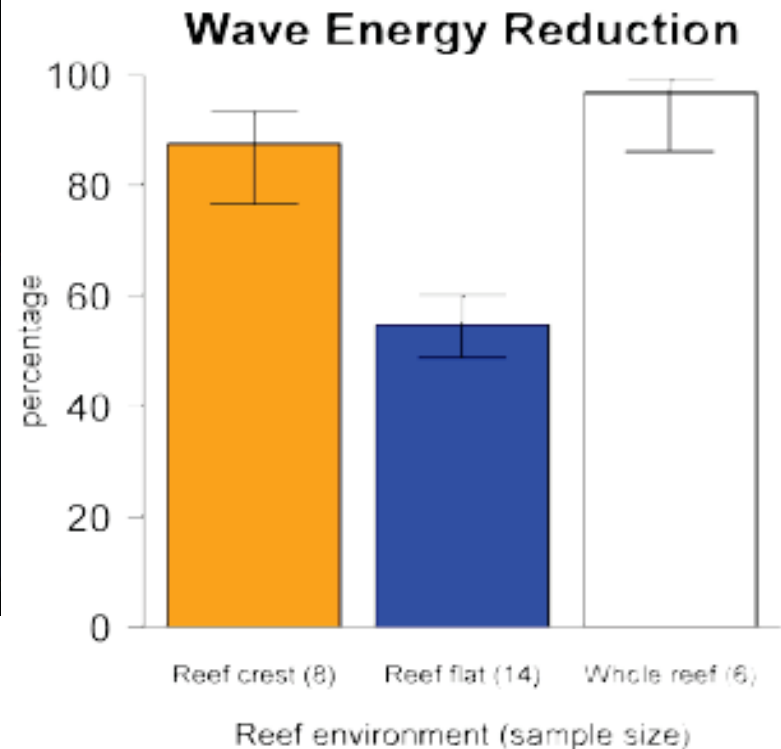


Shellfish Reef Design

Wave Attenuation



Greater wave dissipation associate with wider reefs and reefs higher than MSL (Beck, 2011)



Adopted from Scyphers, 2011

Shoreline Strategies

Tradeoffs between Structural and Non-Structural

- Trade-offs
 - Wave characteristics
 - Prevailing tides
 - Distance to shore
 - Slope
 - Bathymetry
- Numerous site selection tools available
 - DELSI model
 - SCDNR model
 - VIMS site checklist

WHICH PROJECT IS RIGHT FOR MY SITE?				
<i>(source: MD Department of Natural Resources)</i>				
Site Conditions	Low Energy (Nonstructural)	Medium Energy (Hybrid)		High Energy (Structural)
Shoreline Location	creek or cove	minor river	major tributary	mainstem Bay
Water Depth (ft/near shore)	-1.0	-1.0 to -2.0	2.0 to -4.0	-4.0 to -15.0
Fetch (mi/distance to nearest opposite shore)	0.5	1.0 to 1.5	2.0 or more	2.0 or more
Erosion Rate (ft/yr)	2 or less	2 to 4	4 to 8	8 to 20
Erosion Control Treatment Options	Nonstructural projects	Hybrid Project		Structural Projects
	beach replenishment	marsh fringe w/groins		bulkheads
	marsh fringe	marsh fringe w/sills		revetments
	marshy islands	marsh fringe w/breakwaters		stone reinforcing
	biologs, groins	beach replenishment w/breakwaters		groins and jetties
Cost per foot	\$50-100	\$150-300	\$350-500	\$500-1,200

©VIMS, 2010

Project Costs

Includes fabrication, transport, and installation

- **DELSI Living Shoreline (coir logs, plugs, shell bags)**
 - Estimated \$50 to \$100 per linear ft.
- **Shellfish Reef**
 - Estimated \$5 to \$150 per linear ft.
 - Reef Ball \$54 per linear ft.
 - Oyster Castle \$45 per linear ft.
 - Oyster Breaks \$112 per linear ft.
 - Oyster Shell Bags \$5 per linear ft.
- **Marsh Stone Sill \$300to \$480**

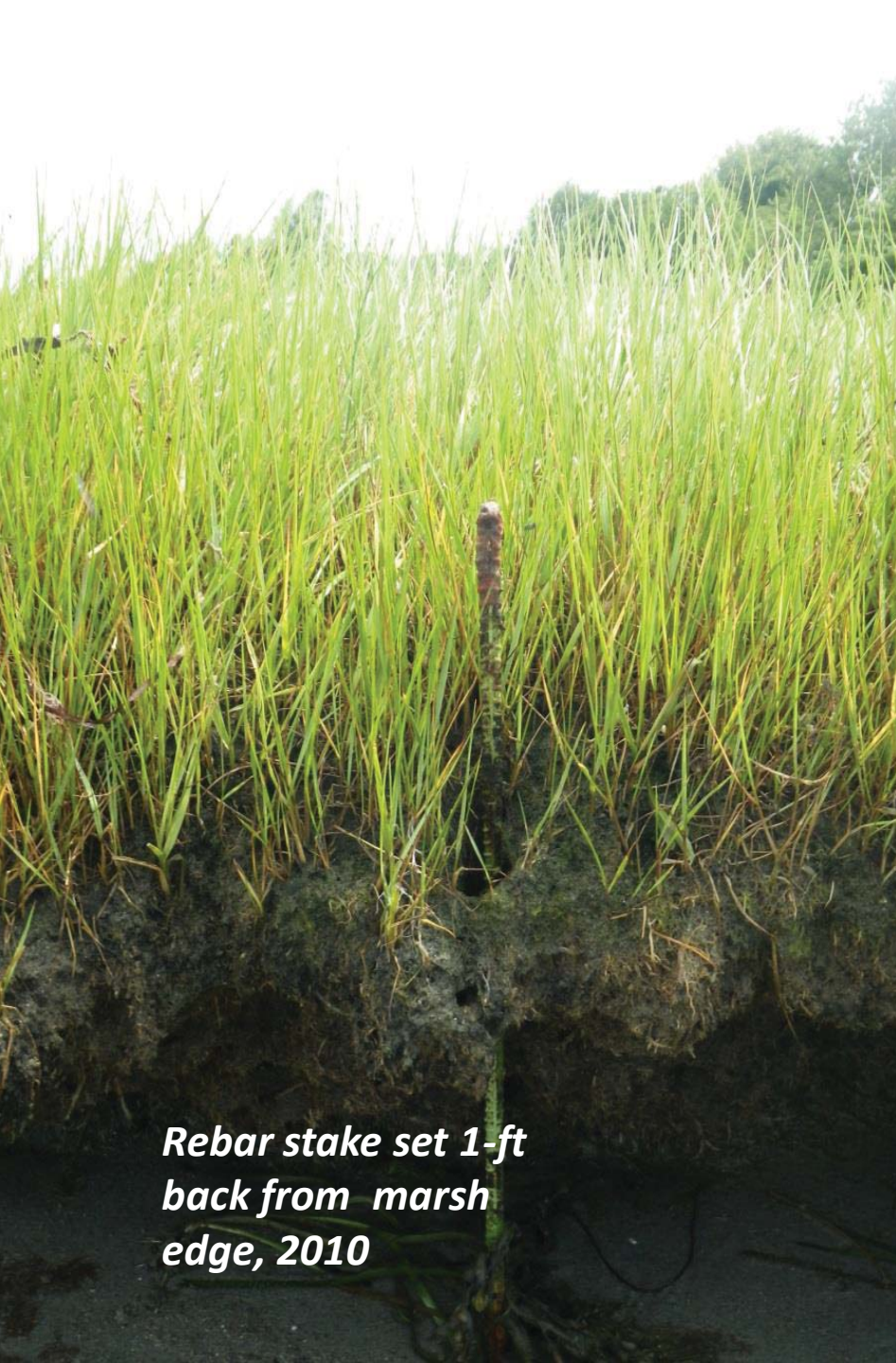


Narrow River

Shoreline Protection Project

- **Problem** – incremental loss of low marsh
- USFWS and TNC erosion study documented:
 - Accelerated lateral erosion near navigational channels
 - Mechanical weakening of marsh bank (loss of surface vegetation, undercutting of supporting sediments, bank collapse)
 - Multiple stressors compounded by Sea Level Rise (SLR)
- **Objective** – identify and implement non-structural erosion control practices that protects marsh banks and enhances services (fish production, nitrogen removal)





*Rebar stake set 1-ft
back from marsh
edge, 2010*



*Rebar stake (marsh
loss 0.2 ft./yr.), 2012*

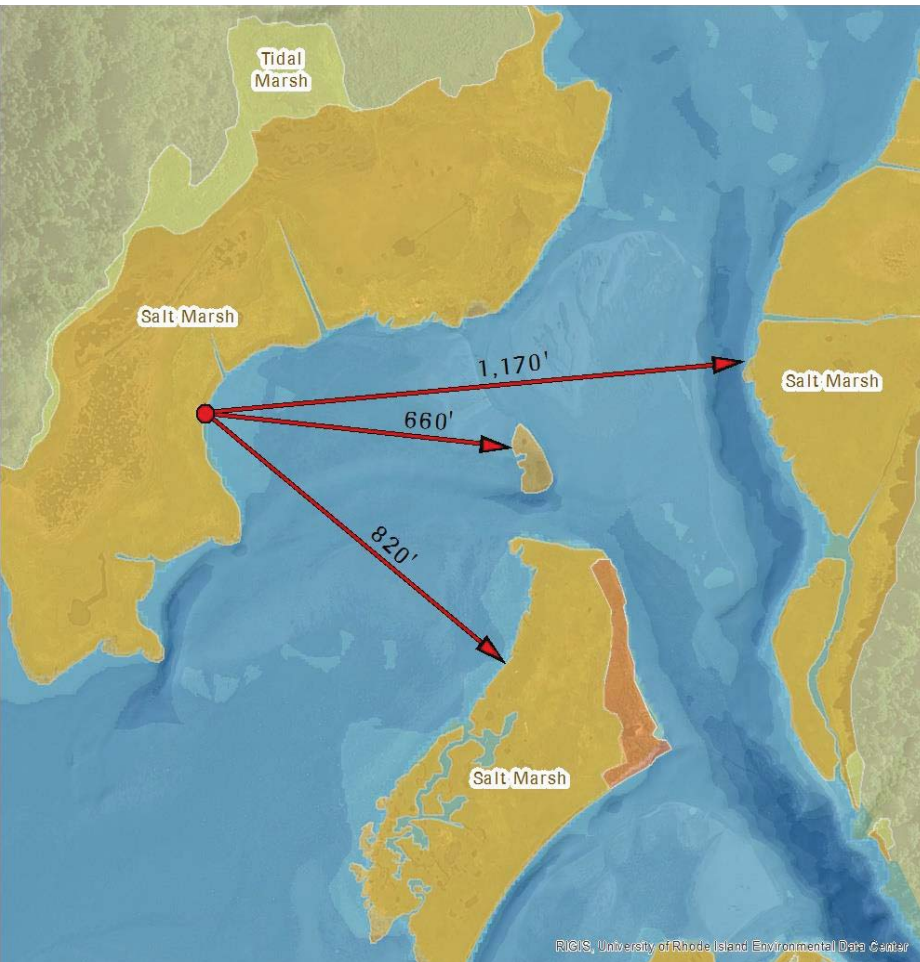
Narrow River

Site Suitability

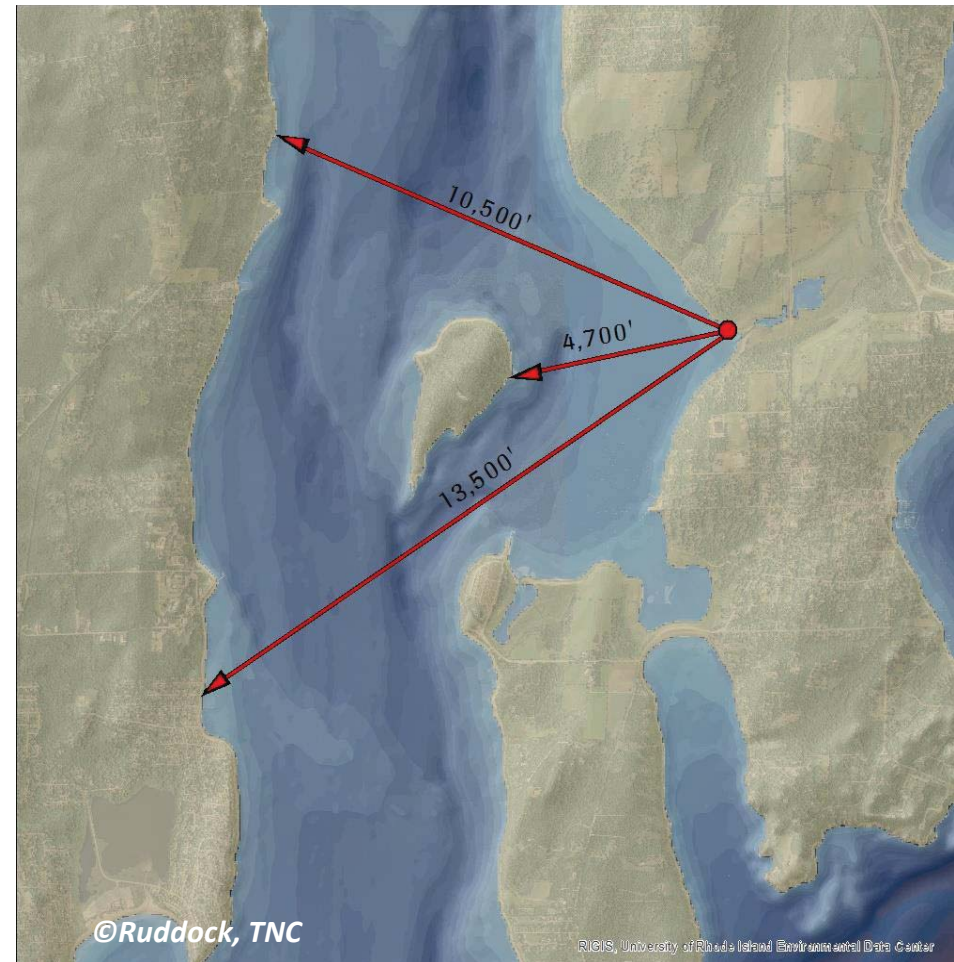


Narrow River

Site Suitability



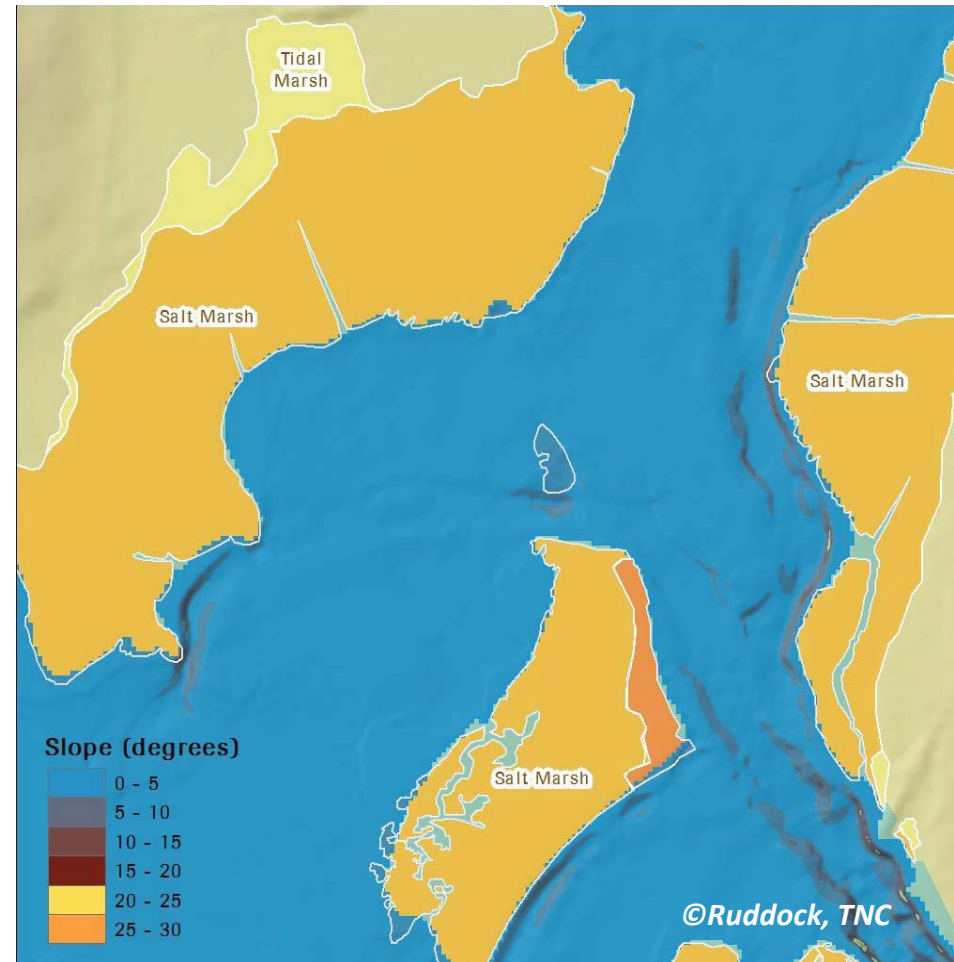
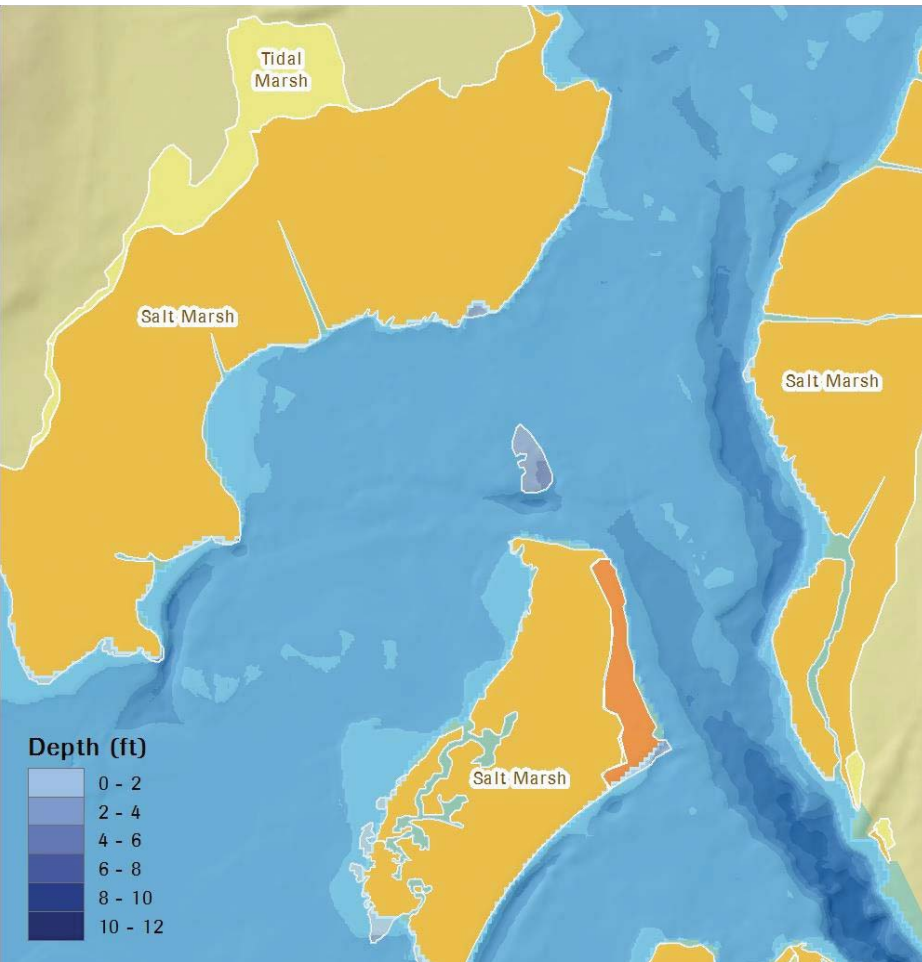
- **Suitable**
 - Fetch < 2 miles, Narrow River



- **Not Suitable**
 - Fetch < 2 miles, Narragansett Bay

Narrow River

Site Suitability



- **Bathymetry**

- Suitable: ≤ 2 feet MLW

- **Slope**

- Suitable: $\leq 20\%$

Narrow River

Site Suitability

- Habitat suitability, field surveys, and population monitoring shows promise
- Shellfish settlement
 - 58.4 ind·m⁻² Upper Reach, 2012
 - 25.6 ind·m⁻² Sedge Island, 2012
- Shellfish reefs will improve fishery resources
- Shellfish reefs are sustainable
 - Sediment burial is unlikely if well-engineered and vertically complex



Oyster spat settlement collector, 2012.

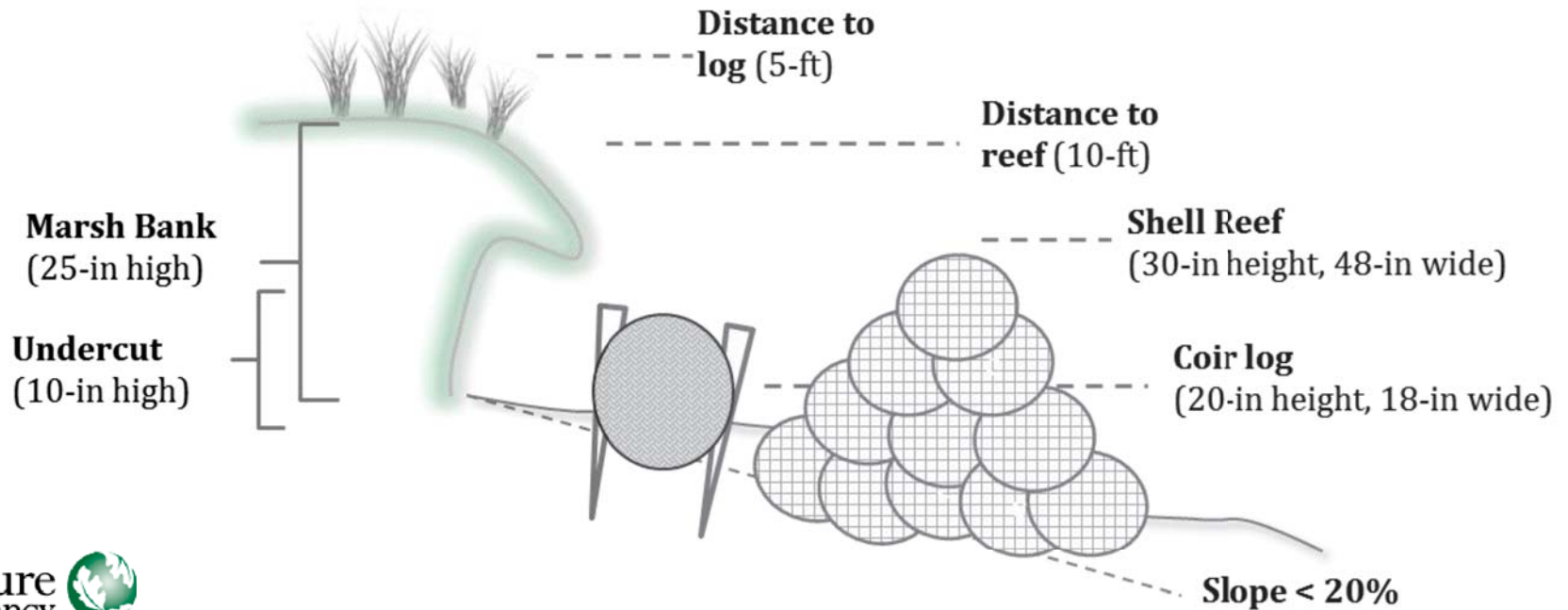


Project Design

Coir log and oyster sill, Narrow River

Site Conditions

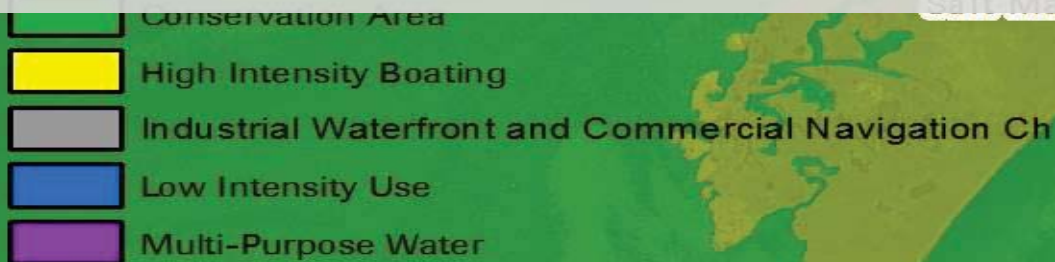
- Slope must be less than 20%
- Height of oyster sill must be equal to or greater than mean high water
- Maximum wave height (H_{\max}) ranged from 5.47 to 11.62 cm
- Tidal range is 7-12 inches, 7-in at middle bridge and 11-in at Sprague bridge
- Factor in 12-in for tidal range





Permits & Regulations

- Construction of new hardened structures in **Type 1 (Conservation Areas)** waters is prohibited
- When structural shoreline protection is proposed, the owner exhaust all reasonable and practical alternatives (Section 300.7.E.1).
- **Erosion Control Permits**
 - RI DEM Water Quality Permit
 - RI CRMC Assent
 - ACOE Category 1 “fill”



©Ruddock, TNC

Narrow River Evaluation Project Timeline

Phase I – establish baseline information on salt marsh and shellfish populations; permit application and coordination with partners; expected date of completion **January 2014**

Phase II – site installation (restoration); expected date of completion is **May 2014**

Phase III – post-restoration monitoring for two years; expected date of completion is **January 2016**



Identify Sites



Installation



Monitor results

Questions, Comments?

Contact me for more information:

Email: dsbrown@tnc.org

The Nature Conservancy 
Protecting nature. Preserving life.™