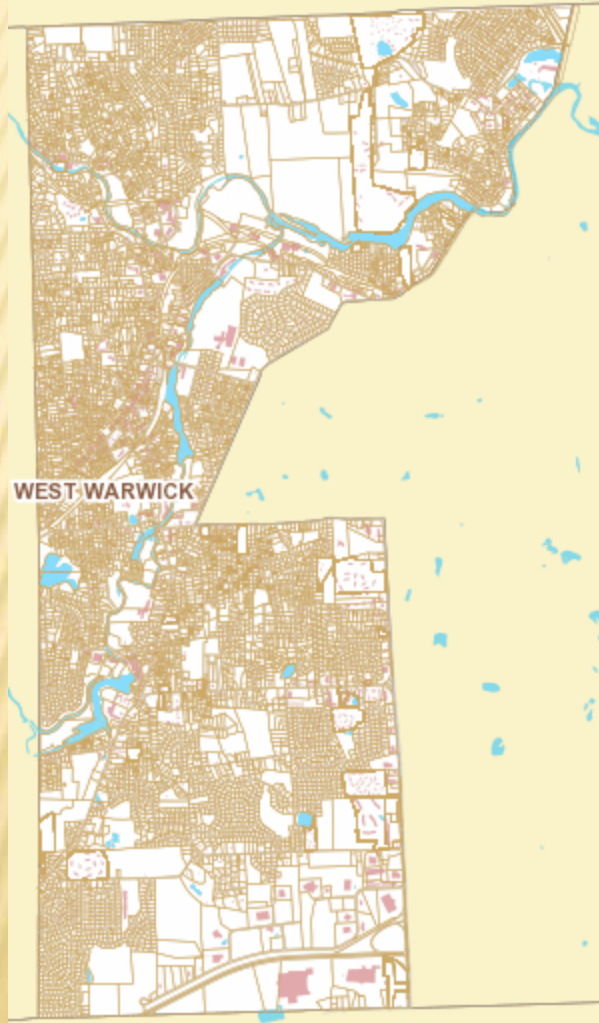


# Town of West Warwick



Fred Presley, Town Manager  
West Warwick, RI

(401)822-9219  
[fpresley@westwarwickri.org](mailto:fpresley@westwarwickri.org)

# West Warwick is a Mill Town

Phenix



Natick



Arctic



Centerville



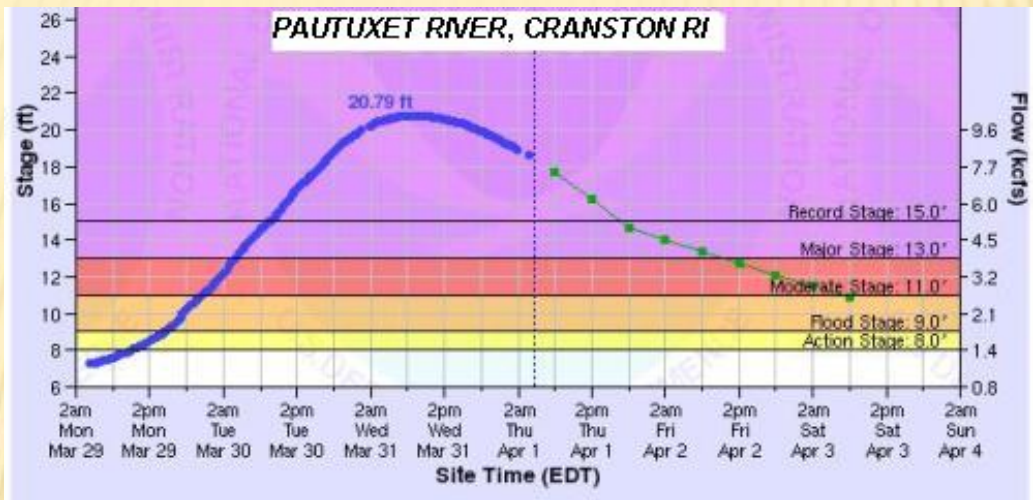
Crompton







# UNDER EXTREME WEATHER EVENTS CAN HAVE DEVASTATING IMPACTS



















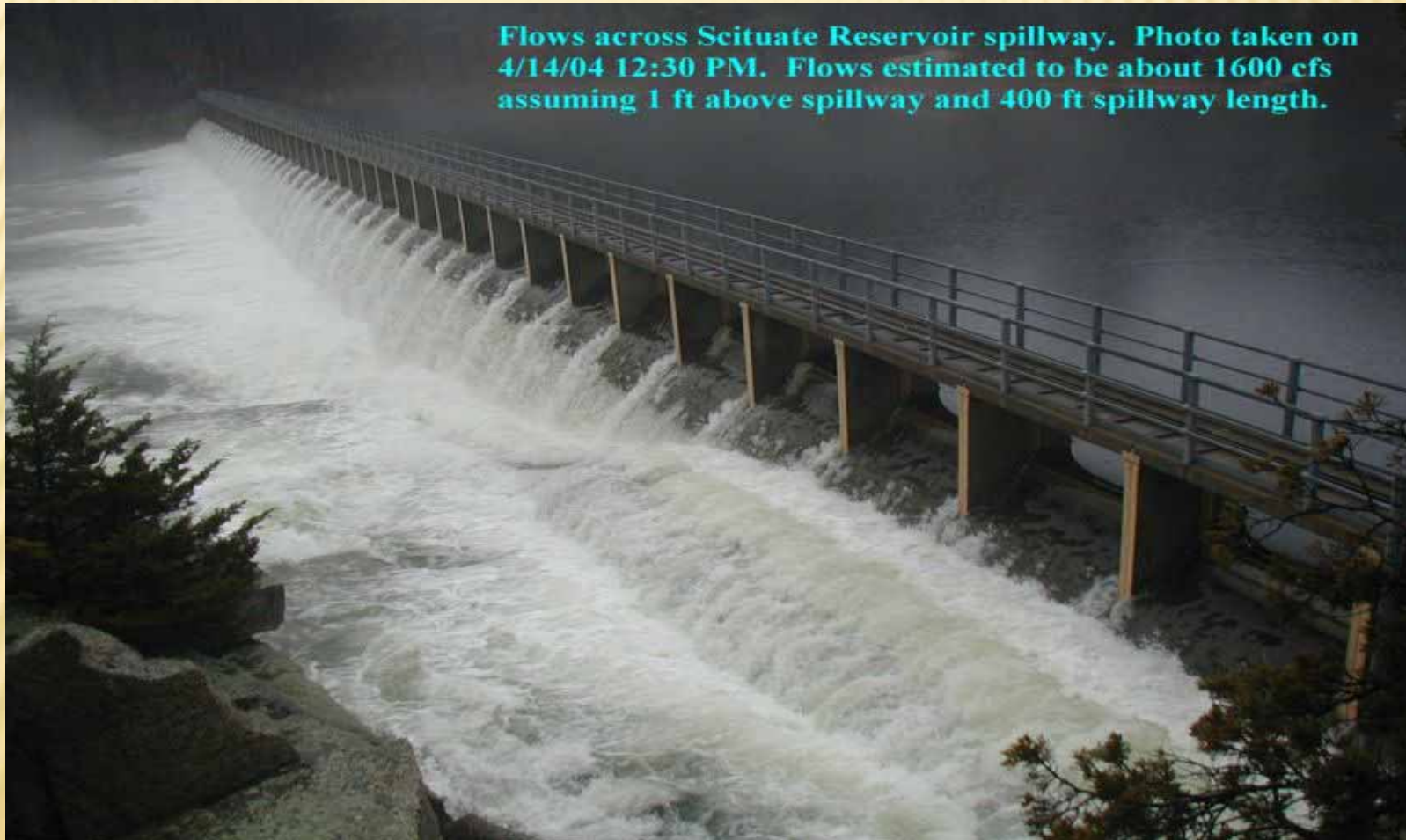


# WASTE WATER TREATMENT FACILITY-MARCH 2010





# DOWNSTREAM FROM A 7.2 MILE PARKING LOT



Flows across Scituate Reservoir spillway. Photo taken on 4/14/04 12:30 PM. Flows estimated to be about 1600 cfs assuming 1 ft above spillway and 400 ft spillway length.

# And It's Not Just The Major Floods

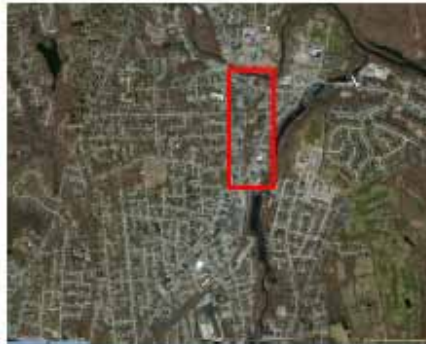


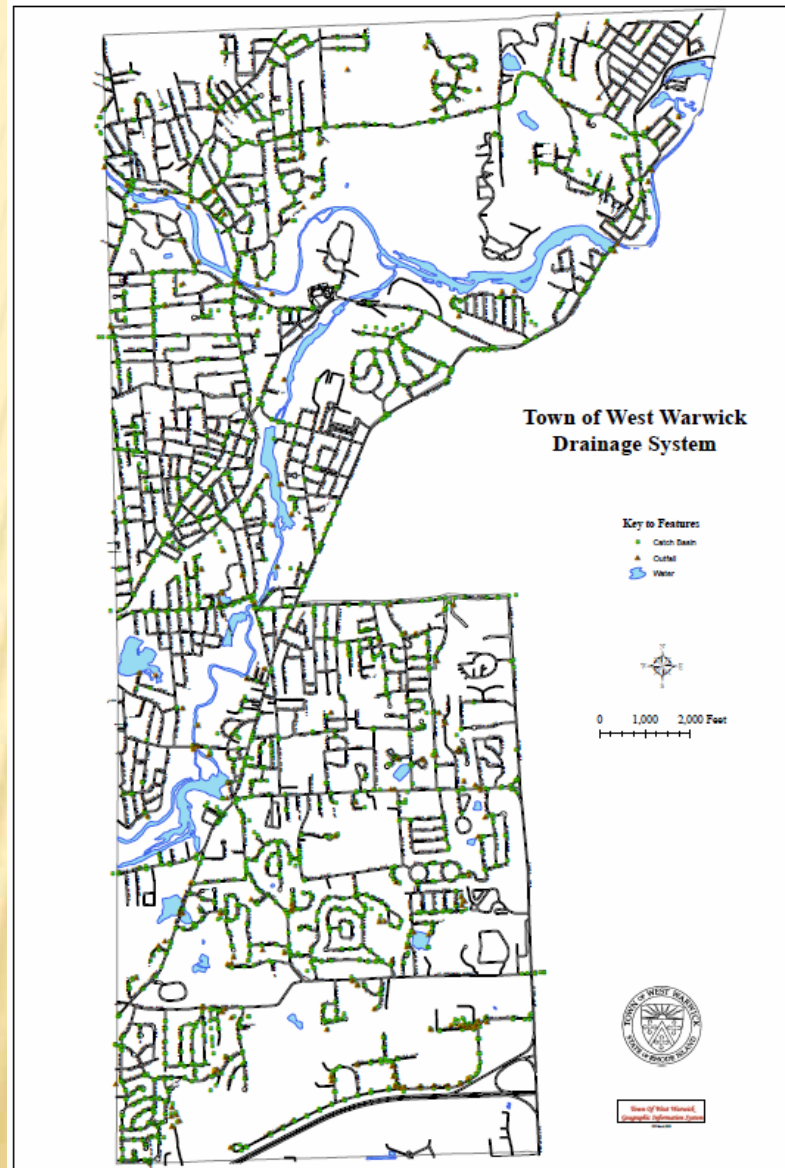
Figure 1—Main Street and Brayton Street location and flooding on Brayton Street property



Figure 2—Two of the outdated and inefficient catch basins on Prospect Hill Ave.



# EXPANSIVE OLD DRAINAGE SYSTEM



# CLIMATE CHANGE = NEW NORMAL

- ❑ More Frequent Storms of Higher Intensity and Longer Duration (see the past winter)
- ❑ More Disaster Declaration-level events (RI has had 4 since 2010, which was the 1<sup>st</sup> time RI had a Presidential Disaster Declaration)
- ❑ Diversity of Disaster Types:
  - ❑ Floods
  - ❑ Hurricanes
  - ❑ Blizzards
  - ❑ Heat Waves
  - ❑ Dangerous Arctic Cold
- ❑ If is no longer “What If”, it’s when!



# SO WHAT CAN WE DO ABOUT IT?

---

- ❑ Plan for Impacts of Climate Change
  - ❑ Identify Vulnerable Properties and Systems and Plan for Needed Changes
    - ❑ Waste Water Treatment Facility
    - ❑ Water Lines
    - ❑ Dams and Bridges
    - ❑ Electric Transmission Lines/Supply
  - ❑ Develop Plans/Strategies for Resilience and Response (Hazard Mitigation Plan, COOP, Town Comprehensive Plan).
- ❑ Improve/Maintain Stormwater Drainage System

**Feasibility Analysis of a  
Stormwater Utility District**

**Town of West Warwick**  
Rhode Island

December 2013



317 Iron Horse Way, Suite 204  
Providence, RI 02908

Project No. 20121861.A10



## **OTHER INITIATIVES CURRENTLY UNDERWAY:**

- ❑ New IT System with redundancy and cloud-based elements/back-ups for major systems
- ❑ Renewable Energy Initiatives to counter energy costs impacts and provide green power for all Town uses (Solar, Wind and Hydro)
- ❑ Conservation initiatives to reduce power needs to include streetlight conversion, public building retrofits etc.

# QUESTIONS?

---

Fred Presley, Town Manager  
West Warwick, RI

(401)822-9219  
[fpresley@westwarwickri.org](mailto:fpresley@westwarwickri.org)