

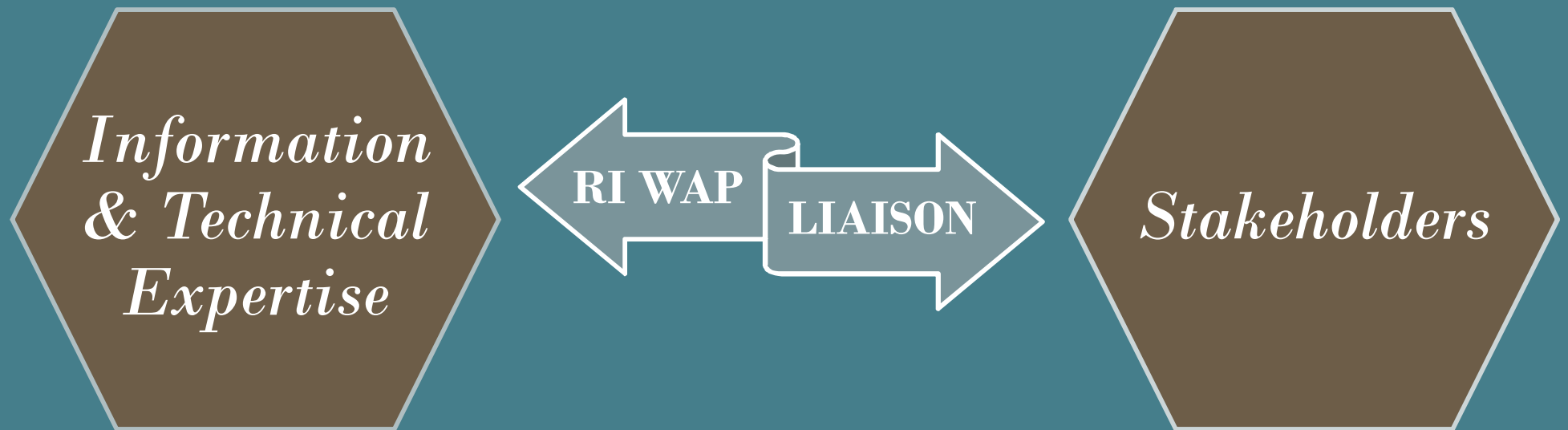
Putting the Rhode Island Wildlife Action Plan to Work



Photo by Chris Raithel

Amanda Freitas, RI WAP Community Liaison

RI WAP Community Liaison



RI Wildlife Action Plan

1937	Federal Aid in Wildlife Restoration Act (P-R)
1950	Federal Aid in Sport Fish Restoration Act
1973	Endangered Species Act (ESA)
1980	Fish & Wildlife Conservation Act (“Nongame Act” or Forsythe-Chafee) No funding mechanism.
2000	State Wildlife Grants (SWG) Program authorized with the explicit goal of PREVENTING endangered species listings. Appropriations.
2005, 2015	RI’s first WAP; 10-Yr revision

RI WAP Elements

1. Species
2. Habitats
3. Threats
4. Actions*
5. Monitoring/Adaptive Management
6. Review Procedures
7. Coordination w/other agencies, tribes
8. Stakeholder involvement



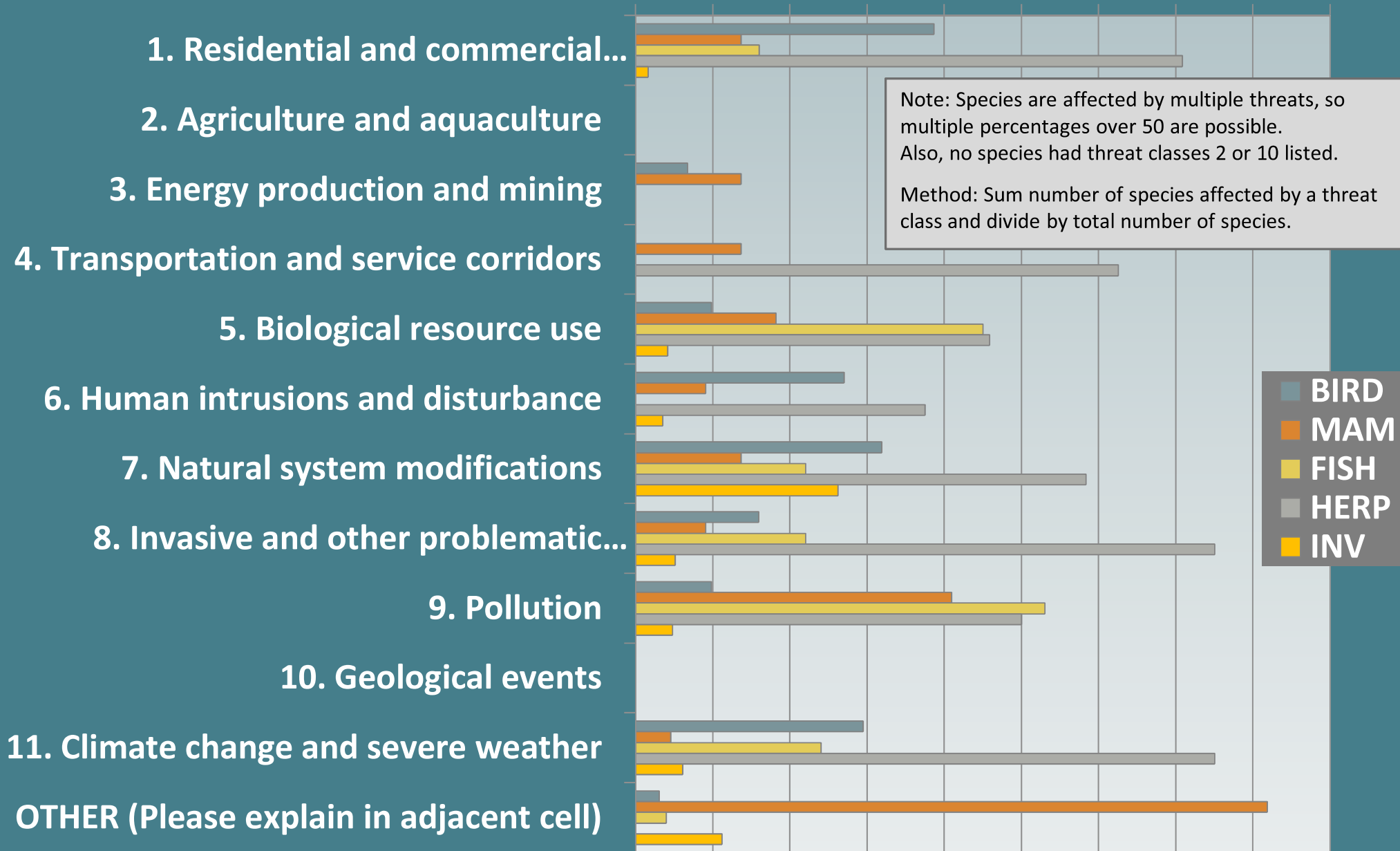
Threats



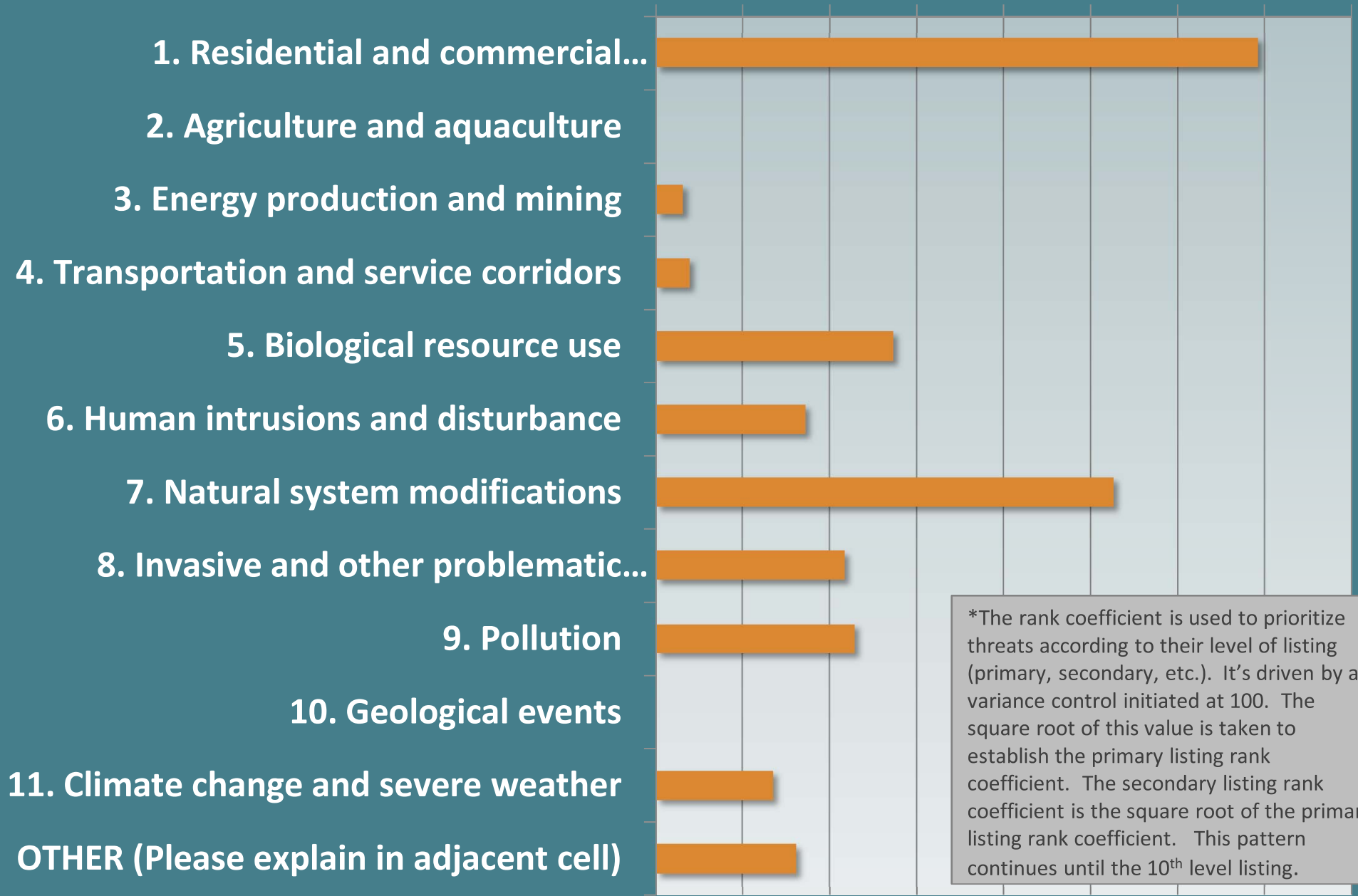
1970 Earth Day poster by cartoonist Walt Kelly, in which he featured characters from his strip, *Pogo*, and famously paraphrased the Oliver Hazard Perry quote, "We have met the enemy, and they are ours".

General threats and % of species affected, by taxa

0% 10% 20% 30% 40% 50% 60% 70% 80% 90%

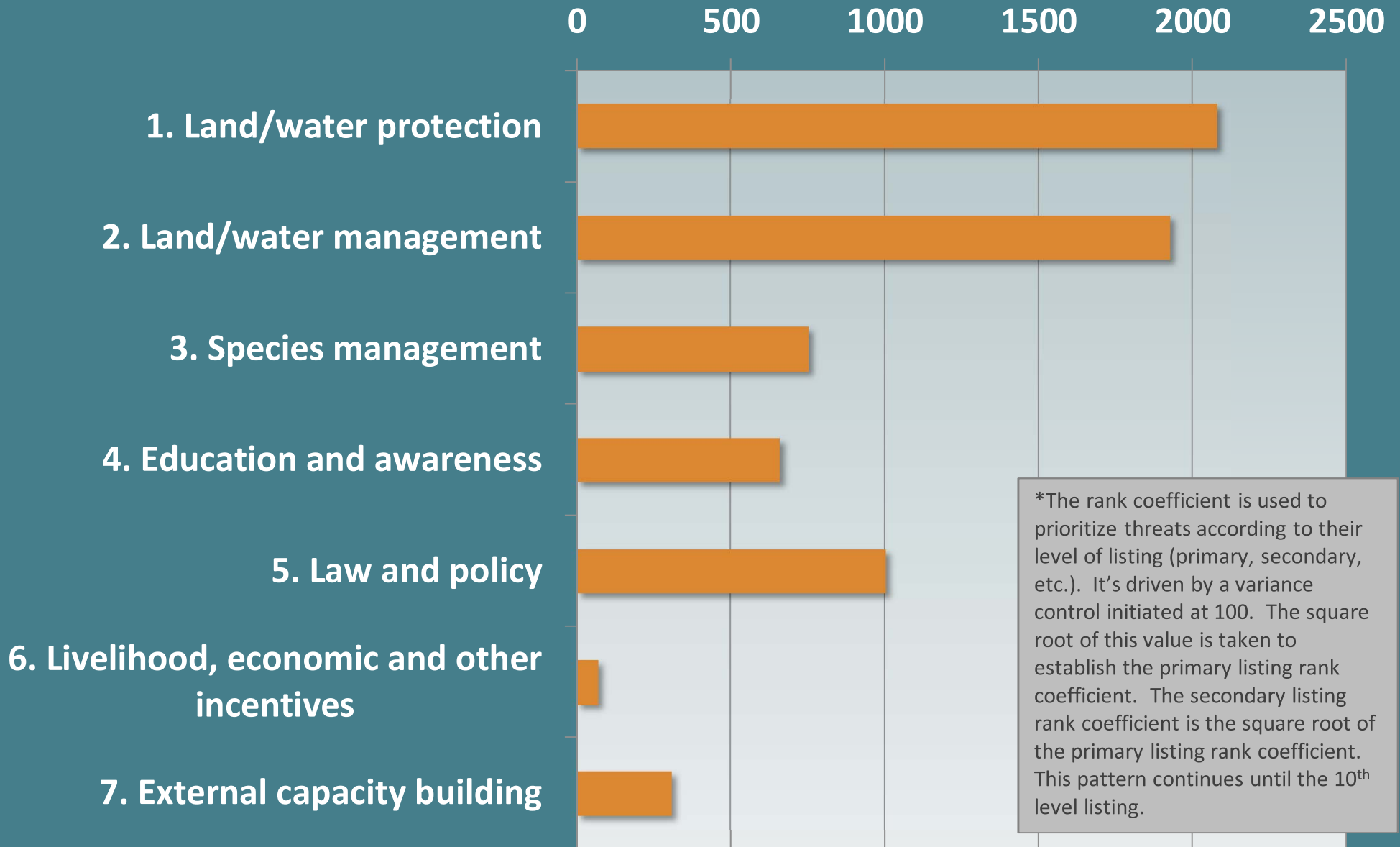


0 200 400 600 800 1000 1200 1400 1600



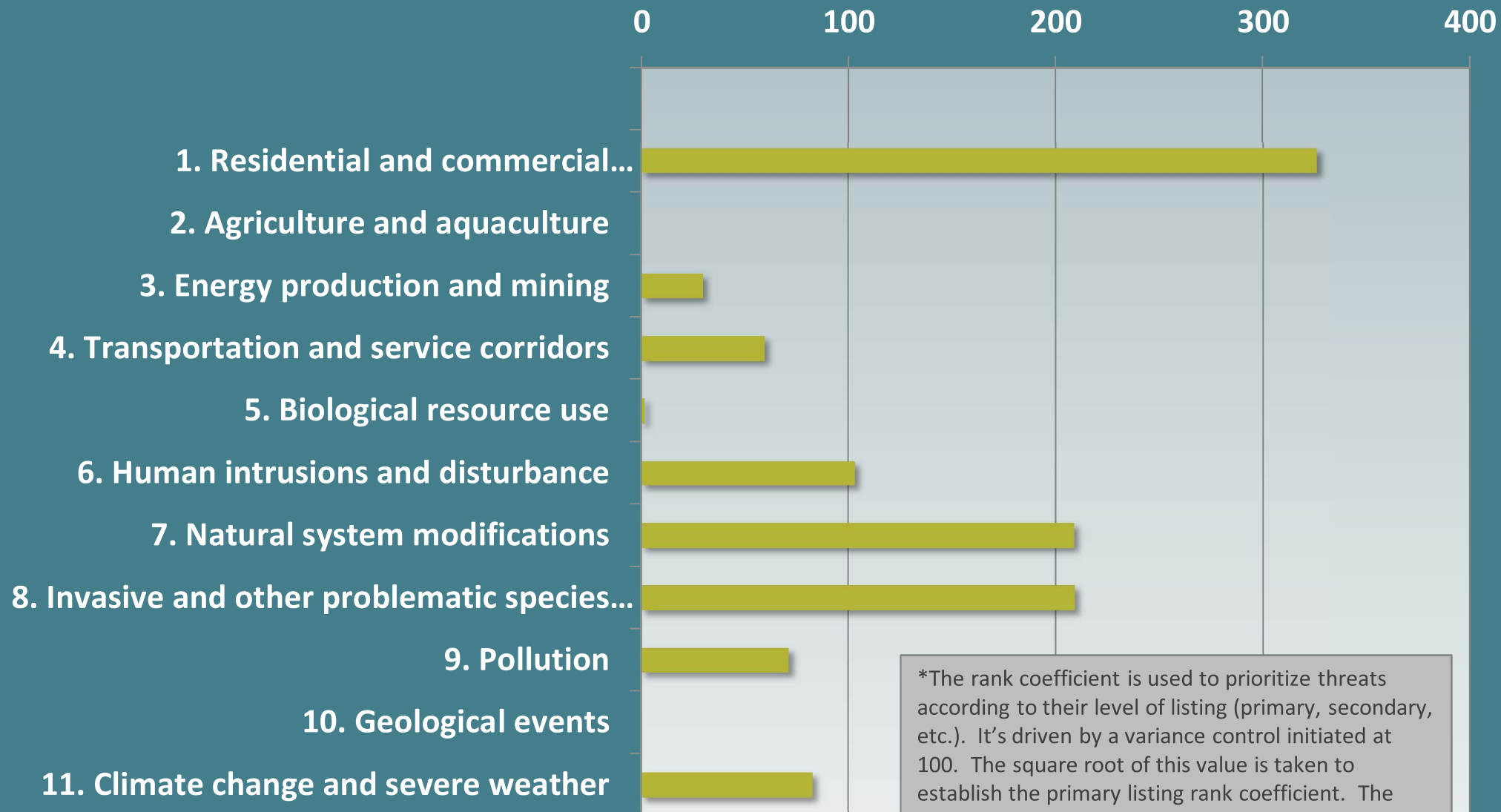
*The rank coefficient is used to prioritize threats according to their level of listing (primary, secondary, etc.). It's driven by a variance control initiated at 100. The square root of this value is taken to establish the primary listing rank coefficient. The secondary listing rank coefficient is the square root of the primary listing rank coefficient. This pattern continues until the 10th level listing.

General Species Threats & Total Ranked Score



Conservation Actions by Ranked Score (All Taxa)

General Habitat Threats Ranked Threat Level & Sum of Occurrences

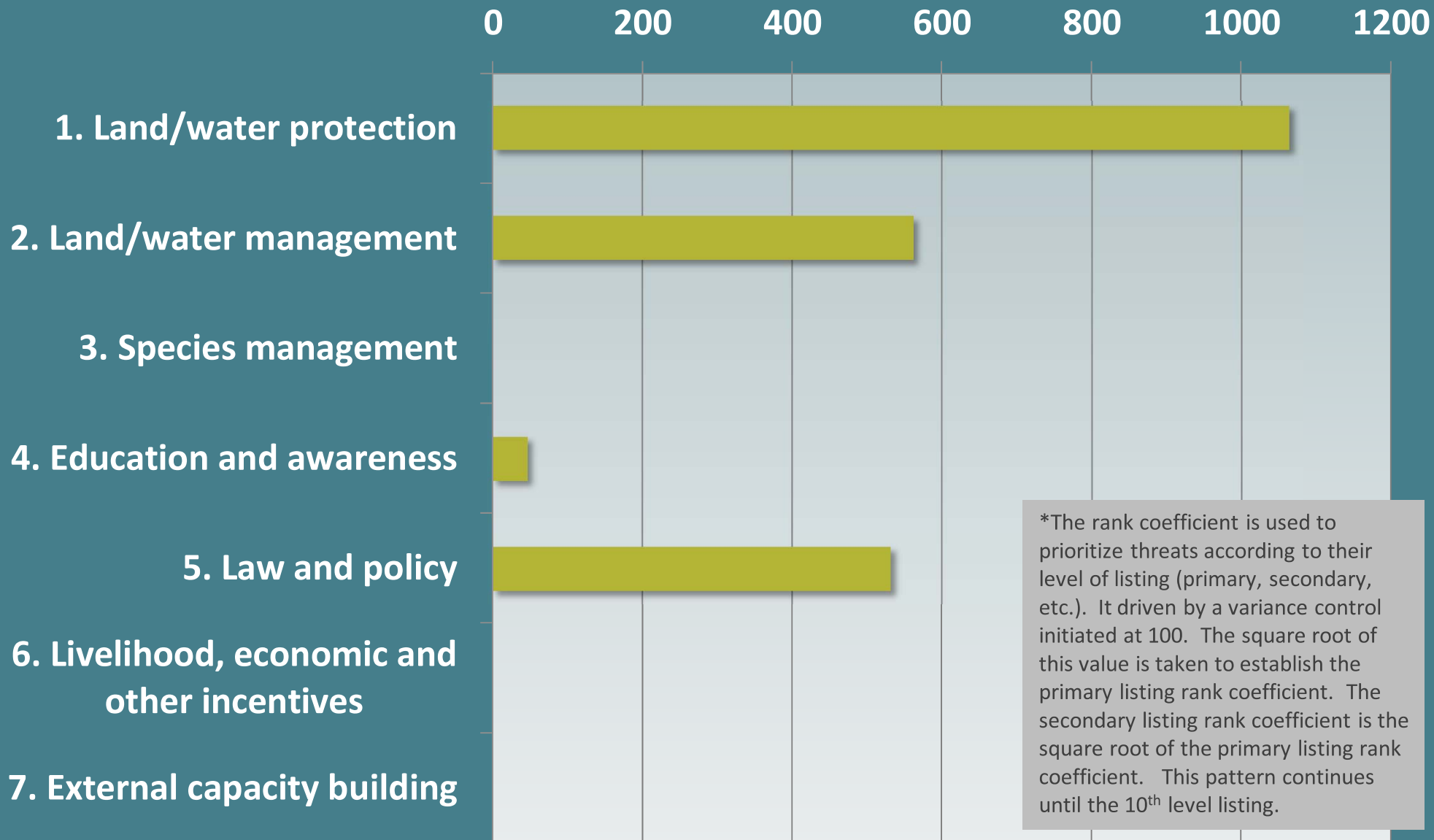


*The rank coefficient is used to prioritize threats according to their level of listing (primary, secondary, etc.). It's driven by a variance control initiated at 100. The square root of this value is taken to establish the primary listing rank coefficient. The secondary listing rank coefficient is the square root of the primary listing rank coefficient. This pattern continues until the 10th level listing.

Ranked Value (# of Occurrences multiplied by rank coefficient)*

Habitat Conservation Actions

Total Ranked Score Across Habitats



Ranked Value (# of Occurrences multiplied by rank coefficient)*

Why Do We Need RI WAP?

- 60% of lands outside of the urban core are undeveloped & unprotected
- No RI regulations specifically protect habitat
- State listed species are unprotected
- Partnerships are critical

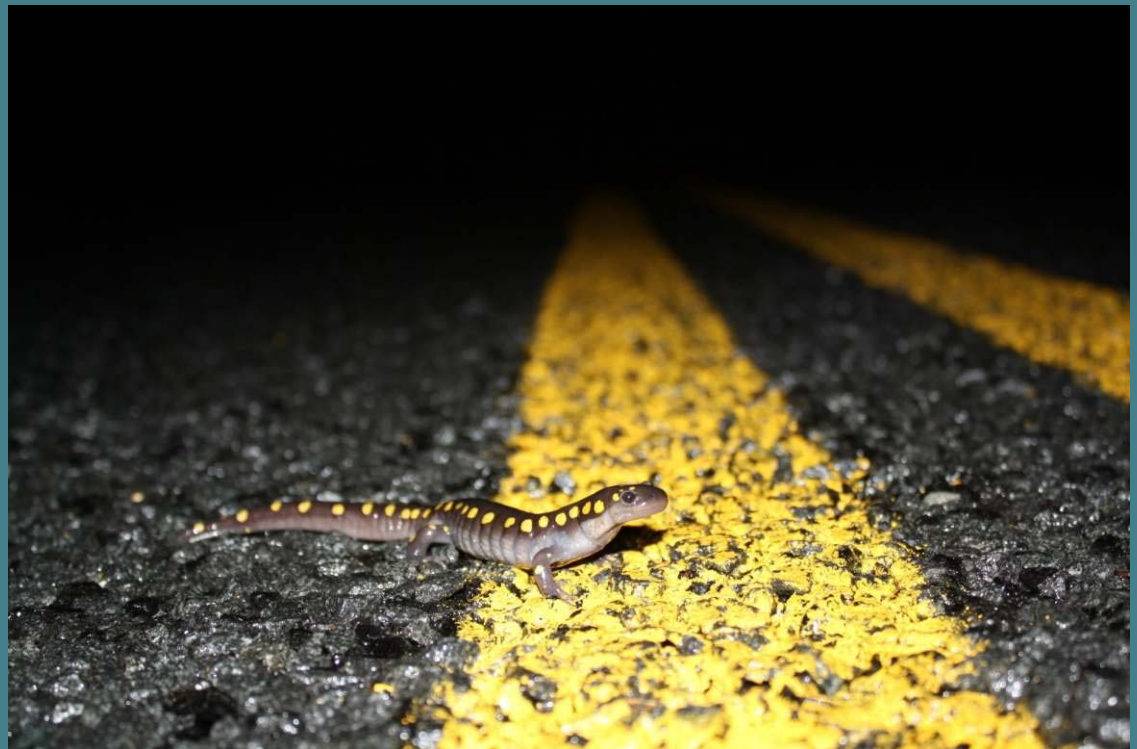


Photo courtesy of Conserve Wildlife Foundation of New Jersey

Wildlife Conservation Model



Chris Raithel



2005 RI WAP



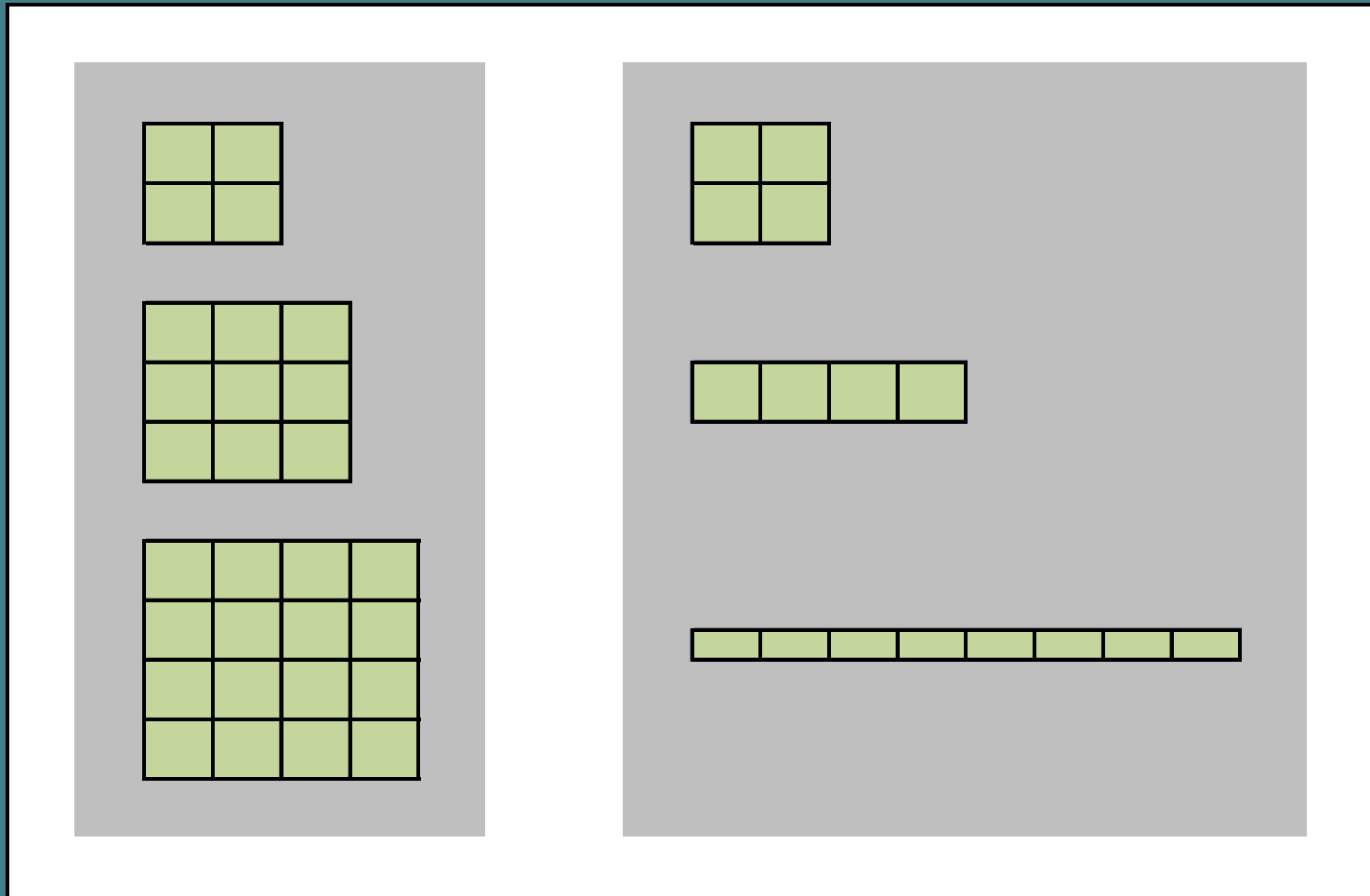
Tim Mooney, TNC

Getting Started

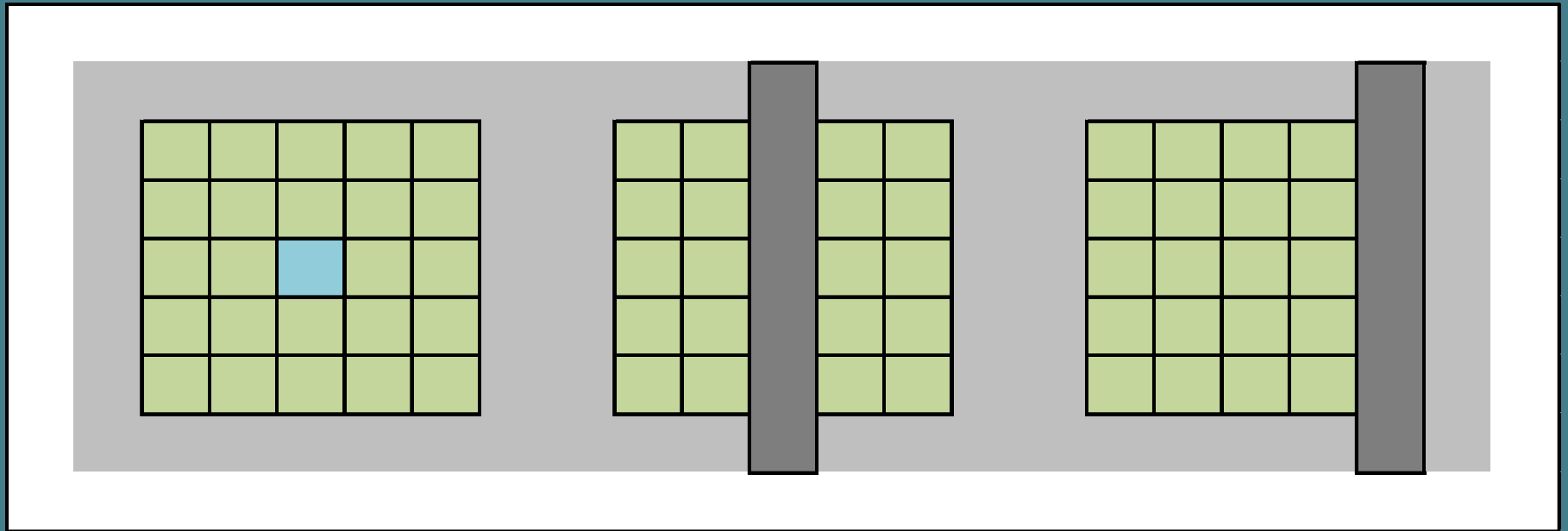
- Size (big)
- Shape (compact)
- Context



Perimeter/Area Ratio



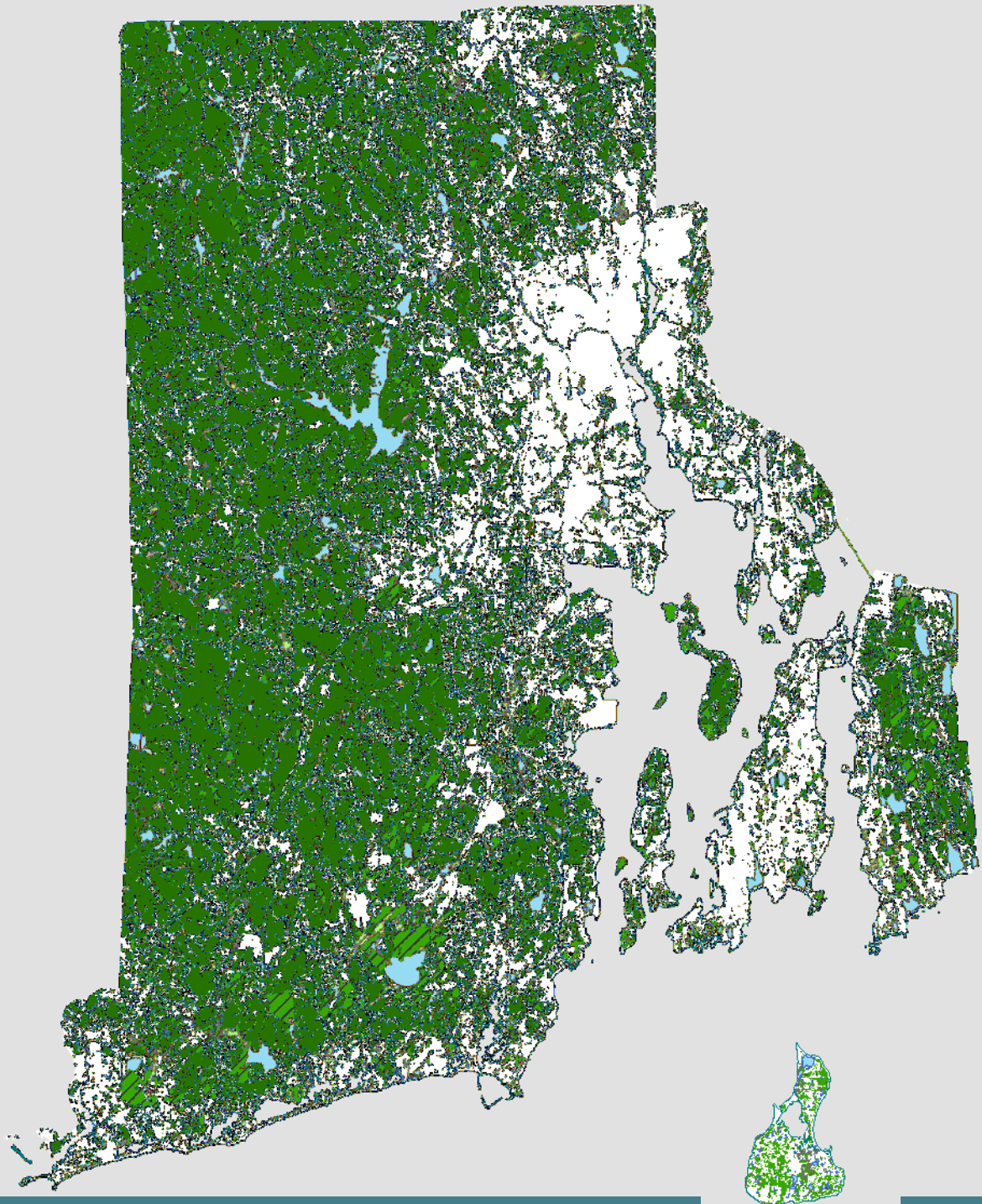
Perimeter/Area Ratio



Conservation Opportunity Areas

- Core Natural Areas
- Corridors
- Sites





RI Forest

-  Freshwater Lakes/Rivers
-  Upland Forest
-  Upland Shrubland
-  Wetland Forest
-  Wetland Shrubland

Source: RIGIS, 2012. Forest Habitat. URL: <http://www.edc.uri.edu/rigis>, Environmental Data Center, University of RI , Kingston, RI (last date accessed: 3/3/2012).

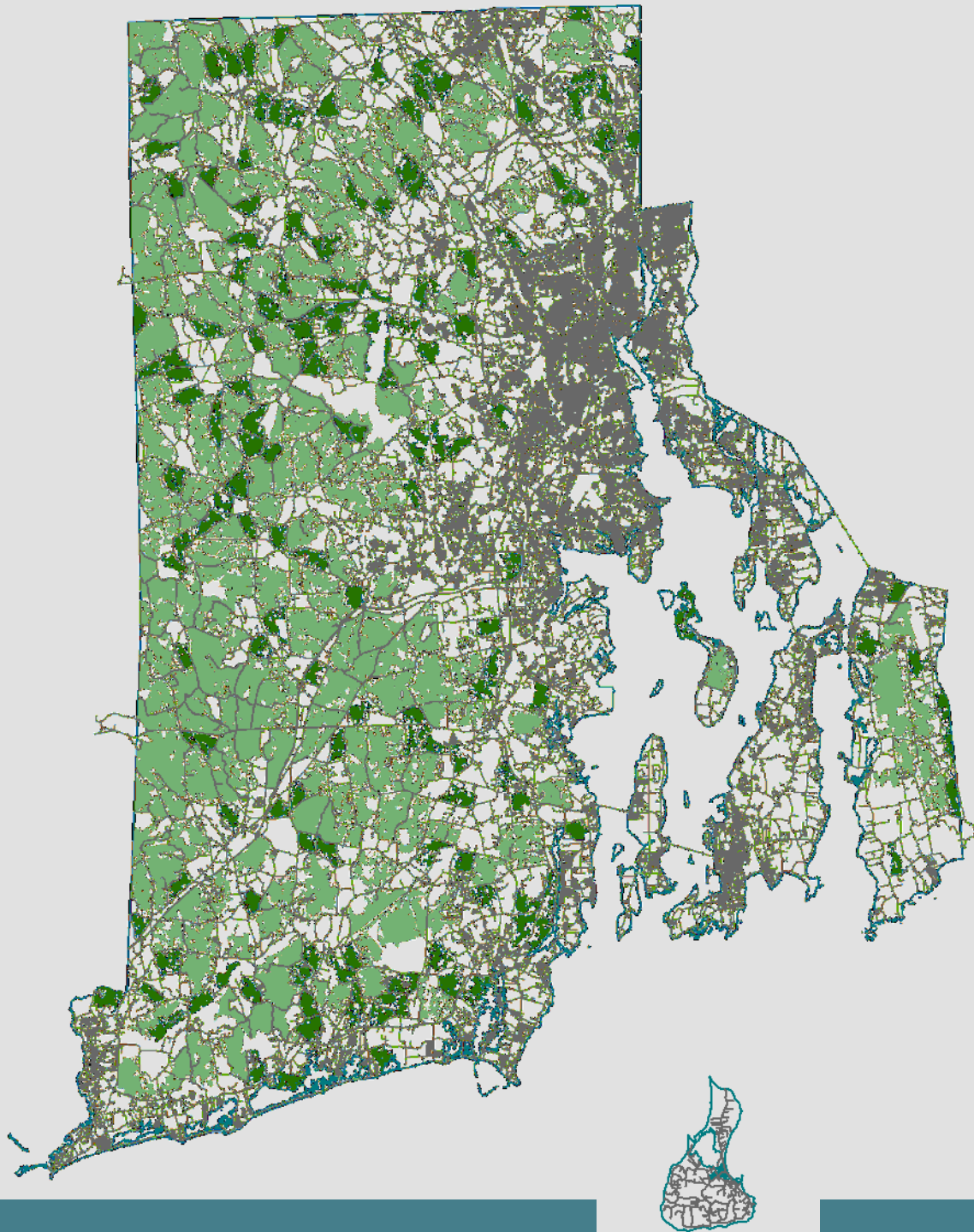
CORE NATURAL AREAS

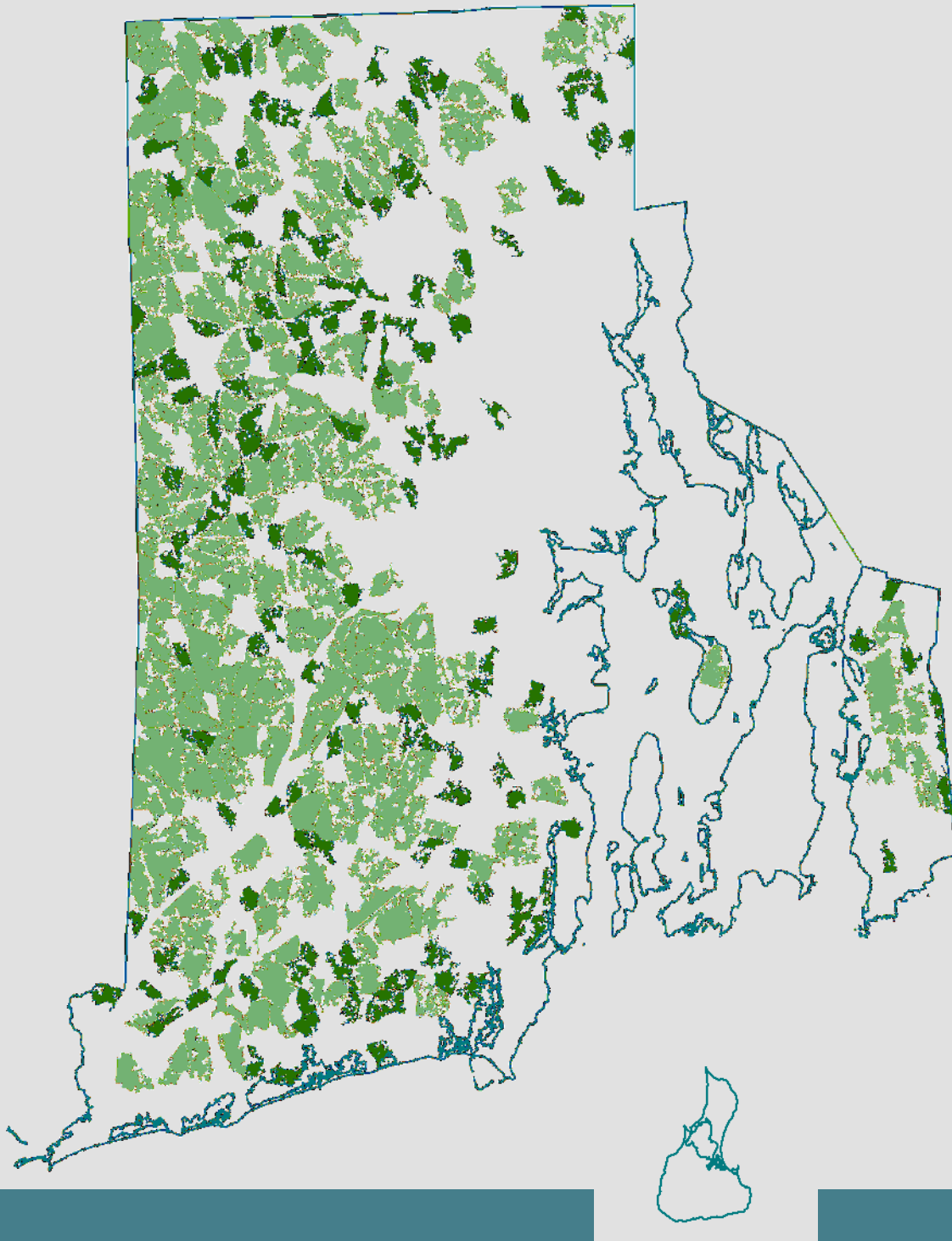
— RoadCenterlines

Acres

■ 250-500 acres


■ >500 acres



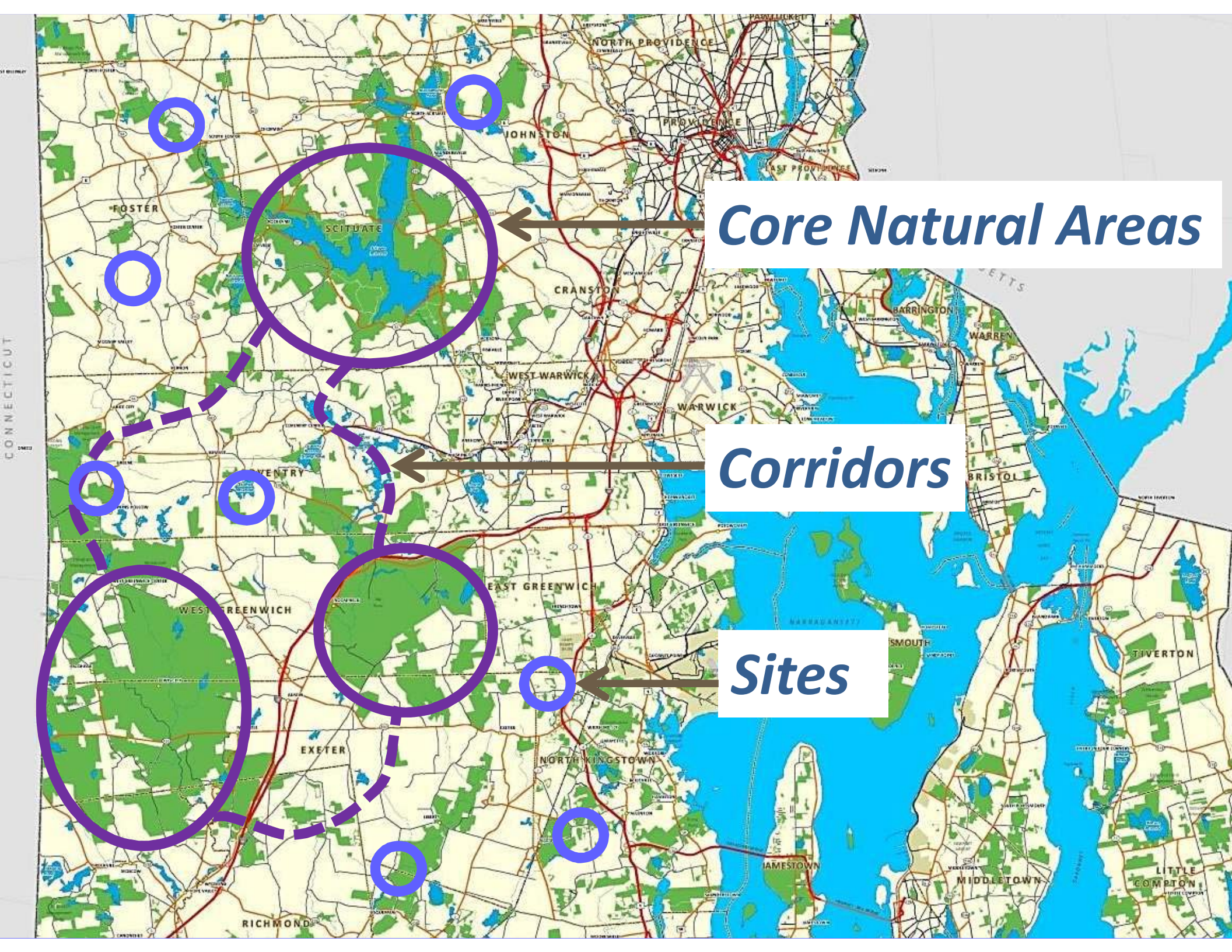


CORE NATURAL AREAS

Acres

 250-500 acres

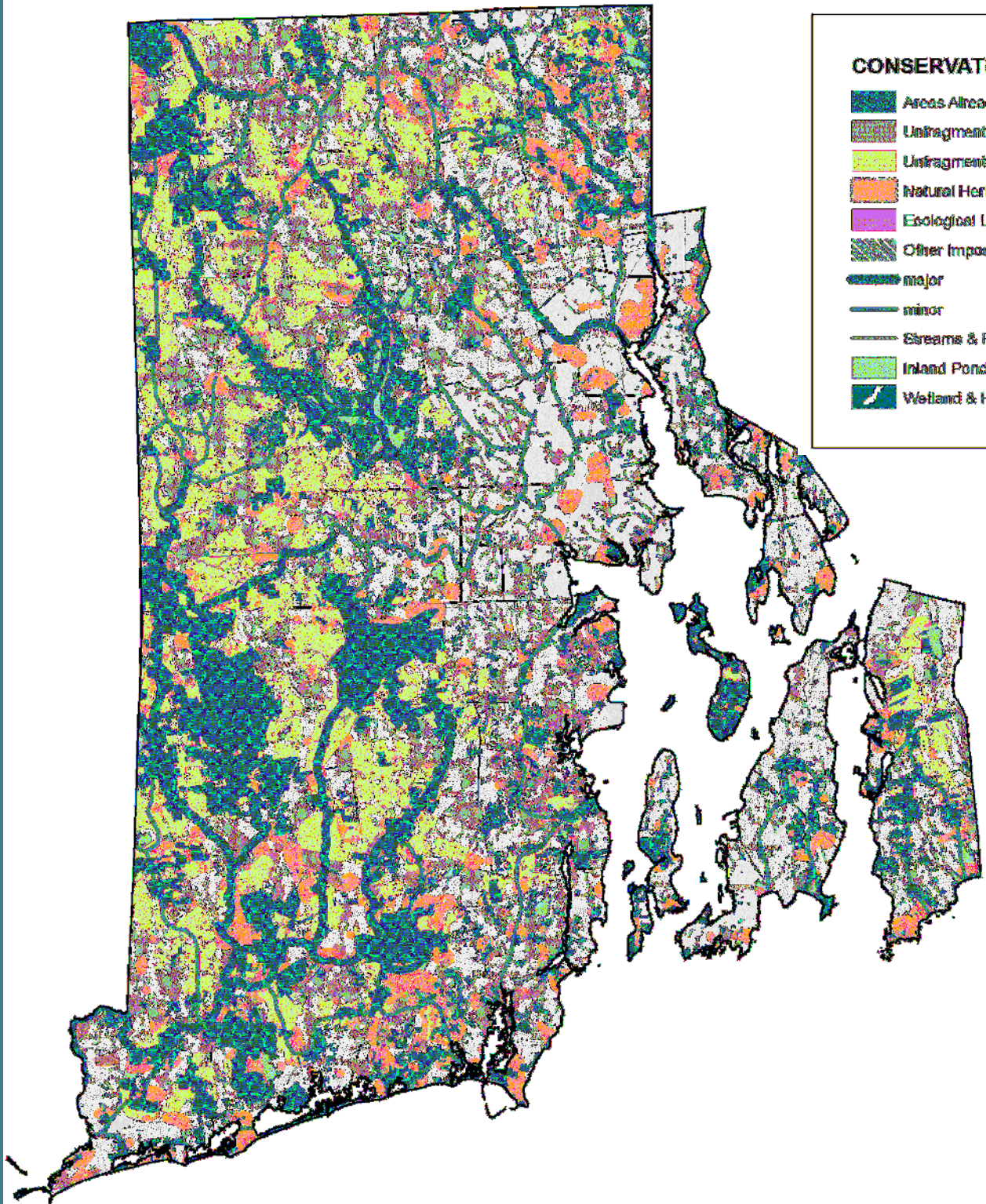
 >500 acres



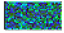






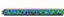


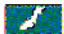
Core Natural Areas

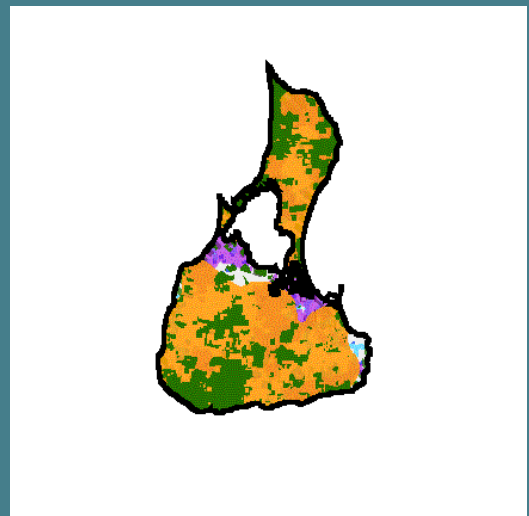
Corridors

Sites



CONSERVATION OPPORTUNITY AREAS MAP

-  Areas Already Protected
-  Unfragmented Forest Blocks (500 acres or more)
-  Unfragmented Forest Blocks (250 < 500 acres)
-  Natural Heritage Areas
-  Ecological Land Units (Best & Better)
-  Other Important Areas and Sites (from TNC)
-  major
-  minor
-  Streams & Rivers
-  Inland Ponds and Lakes
-  Wetland & Hydric Soils



RI WAP Community Liaison



Rhode Island Wildlife Action Plan Community Liaison

Amanda J. Freitas, M.A.
Wildlife Ecologist

Amanda.Freitas@dem.ri.gov
235 Promenade Street
Providence, RI 02908
401-555-1212



The Community Liaison is a RINHS-RIDEM Collaboration. AJF is an Employee of RINHS.