

FINANCING STORMWATER MANAGEMENT

THE WEST WARWICK JOURNEY



FUNDING THE STUDIES

- **RIDEM**
- **NEIWPCC (NEW ENGLAND INTERSTATE WATER POLLUTION CONTROL COMMISSION)**



Feasibility Analysis of a Stormwater Utility District

Town of West Warwick
Rhode Island

December 2013

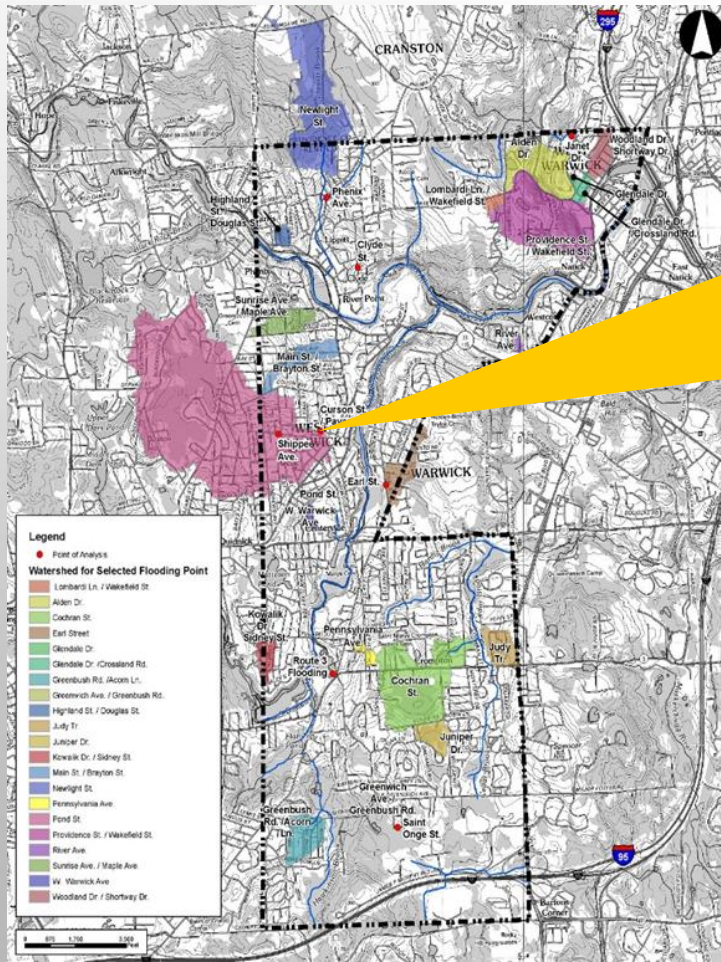


317 Iron Horse Way, Suite 204
Providence, RI 02908

Project No. 20121861.A10

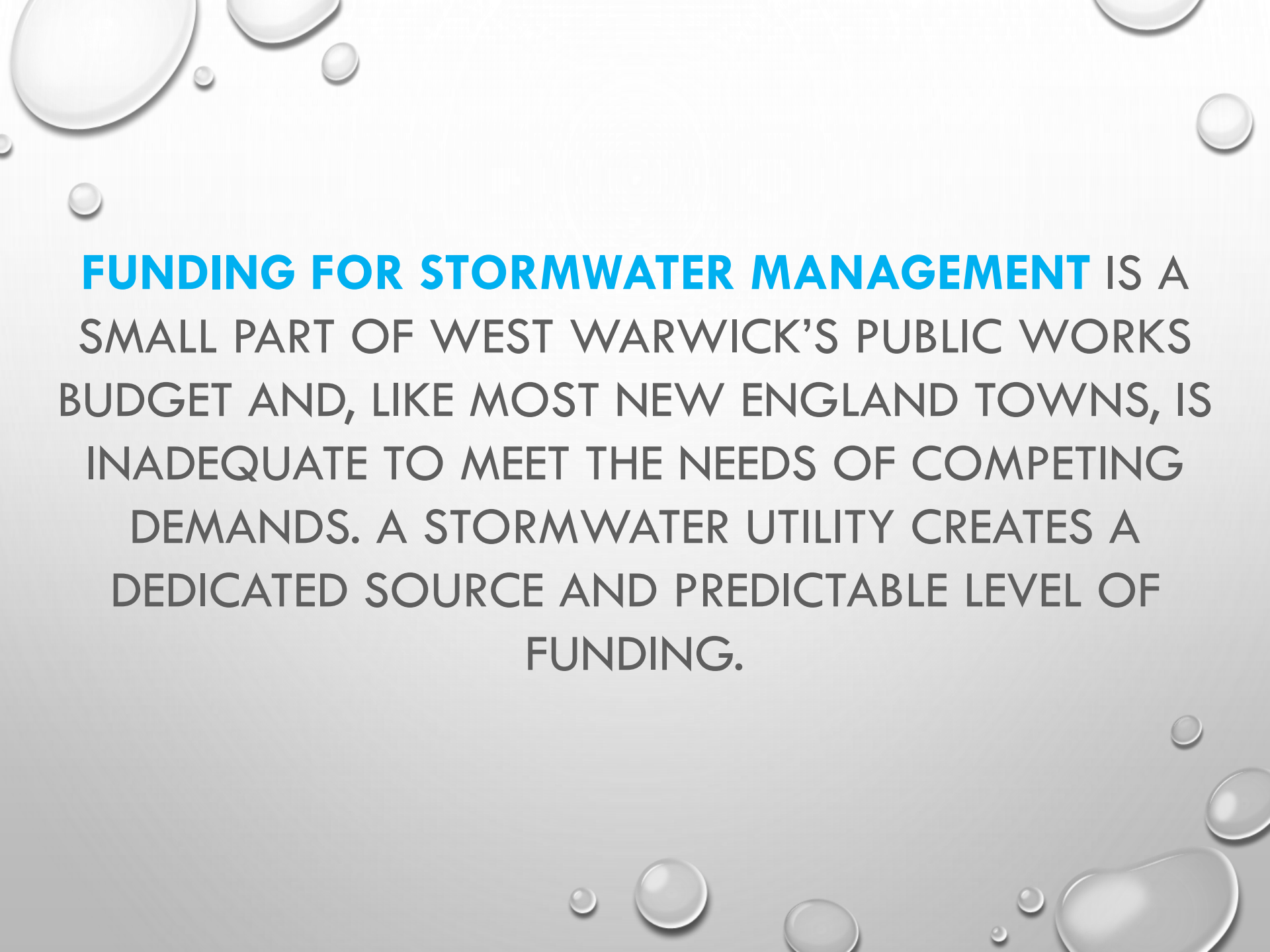
AREAS OF CHRONIC FLOODING CONSIDERED IN STUDY

THE AREAS SHOWN IN THE MAP BELOW WERE IDENTIFIED BY TOWN STAFF AS AREAS OF CHRONIC AND SIGNIFICANT FLOODING.



Stormwater-Associated Impairment and Watershed Issues

Waterbody Name	Stormwater-Associated Impairment of Concern*	Watershed and Waterbody Issues
Hardig Brook	Bacteria Lead	<ul style="list-style-type: none"> • Largest freshwater tributary to Greenwich Bay • Elevated nitrogen found by EPA • High density of development and impervious surface
Pawtuxet River South Branch	Bacteria Lead	<ul style="list-style-type: none"> • High density of development and impervious surface • Significant modification of stream channel with flow diversion and impoundments
Pawtuxet River Main Stem	Bacteria Phosphorus Mercury Cadmium	<ul style="list-style-type: none"> • High density of development and impervious surface • Especially high density of development adjacent to the river • Significant modification of stream channel with flow diversion and impoundments
Meshanticut Brook	Bacteria	<ul style="list-style-type: none"> • High density of development and impervious surface



FUNDING FOR STORMWATER MANAGEMENT IS A SMALL PART OF WEST WARWICK'S PUBLIC WORKS BUDGET AND, LIKE MOST NEW ENGLAND TOWNS, IS INADEQUATE TO MEET THE NEEDS OF COMPETING DEMANDS. A STORMWATER UTILITY CREATES A DEDICATED SOURCE AND PREDICTABLE LEVEL OF FUNDING.

TRADITIONAL FUNDING FOR INFRASTRUCTURE

STORMWATER CHALLENGES



Flooding



*Environmental
Non-compliance*



*Water Quality
Impacts*

... AND THEIR TYPICAL FUNDING SOURCE



*Human Services, Schools, Parks
Administration, Infrastructure, etc.*

*Stormwater
Management*

APPROACH

TO ADDRESS THESE ISSUES THE TOWN PROPOSED DEVELOPMENT OF A STORMWATER UTILITY AND IMPLEMENTATION OF A CAPITAL INFRASTRUCTURE IMPROVEMENT PLAN. THE PROJECT ALSO INCLUDES A SIGNIFICANT PUBLIC INVOLVEMENT PROCESS.

A MORE EQUITABLE SOLUTION

WHO PAYS?

General Fund



Residential



Commercial



Nonprofits (Churches, Schools, etc.)

WHO PAYS?

Stormwater Utility



Residential



Commercial



Nonprofits (Churches, Schools, etc.)

OUTCOME

THIS PROJECT IS ONGOING AND INFRASTRUCTURE CONSTRUCTION IS PENDING. THE TOWN PLANS TO PROPOSE A \$55/YEAR/ERU FEE, WHICH WILL BE USED TO FUND \$4 MILLION IN CAPITAL PROJECTS AND GENERATE AN OPERATIONS BUDGET \$570 THOUSAND PER YEAR.

Next Steps:

- **Public Outreach Campaign**
- **Draft Ordinance**
- **Vote of the Council**



Figure 1—Main Street and Brayton Street location and flooding on Brayton Street property



Figure 2—Two of the outdated and inefficient catch basins on Prospect Hill Ave.

The background features a light gray gradient with several realistic water droplets of various sizes scattered in the corners. The droplets have highlights and shadows, giving them a three-dimensional appearance.

QUESTIONS?

FRED PRESLEY

FPRESLEY@WESTWARWICKRI.ORG