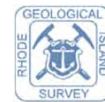


Tutorial:

# Rapid Property Assessment & Coastal Exposure or Rapid PACE

[www.beachsamp.org/relatedprojects/pace/](http://www.beachsamp.org/relatedprojects/pace/)



# Rapid PACE

## What is it?

- provides property-specific information about exposure to coastal hazards
- provides a comprehensive overview, enabling proactive decision making

## Who is it for?

- *municipal officials* can request a summary report for a specific site
- *the public* can compile their own site-specific reports using the same information used to compile reports for municipal officials

## What are some examples of the information available?

- sea level rise
- storm surge
- erosion
- marsh migration areas
- coastal water type
- jurisdiction (CRMC vs. DEM)
- location within various special management areas

# Accessing Rapid PACE

# RI Shoreline Change Special Area Management Plan



Home	News	Events	Related Projects	STORMTOOLS	Coastal Erosion Maps	Management Plan	Get Involved
------	------	--------	------------------	------------	----------------------	-----------------	--------------

- Coastal Municipalities
- Coastal Businesses
- Coastal Residents
- Fact Sheets

**URI Coastal Resilience Science and Engineering Workshop, Monday, December 4th, 8:30am – 5:45pm**

Search

Recent Posts

- URI Coastal Resilience Science and Engineering Workshop, Monday, December 4th, 8:30am – 5:45pm November 29, 2017
- Comment on the BeachSAMP Chapters HERE October 16, 2017
- October 12th, BeachSAMP Stakeholder Meeting October 12, 2017

- 
1. Go to [www.beachsamp.org](http://www.beachsamp.org)
  2. Open the [Related Projects](#) tab, then click [Coastal Municipalities](#)

# Coastal Municipalities

## Resources to Inform Adaptation Planning & Actions

### Sea Level Affecting Marsh Migration (SLAMM)



Statewide maps illustrating how salt marshes may migrate as sea level changes.

[View the maps here.](#)

[View the final report here.](#)

### Rapid Property Assessment and Coastal Exposure (Rapid PACE)



More frequent severe storms and sea level rise due to climate change require proactive responses from local decision makers. **Rapid Property Assessment and Coastal Exposure (Rapid PACE)** is a free screening tool available to municipal officials that provides a property-specific summary of exposure to coastal hazards typically within 48-hours of a request.

The report compiles existing information, some of which can assist in regulatory decisions while others support planning initiatives. The information helps municipal officials make informed decisions and safer, more resilient communities.

1. **Scroll down, then click [Rapid Property Assessment and Coastal Exposure \(Rapid PACE\)](#)**

# Rapid PACE

## Rapid Property Assessment and Coastal Exposure (Rapid PACE)

Preparedness and Decision Making for Coastal Residents in Rhode Island and Connecticut

Interactive Maps



More frequent intense storms and increasing sea levels require proactive planning and action for our communities to become more resilient. The Rapid Property Assessment and Coastal Exposure (Rapid PACE) [mapping tool](#) helps municipal officials and property owners view areas exposed to storms, erosion, and sea level rise; evacuation zones, salt marsh migration areas and areas of coastal and wetland jurisdiction are also mapped. **Municipal officials can request a free screening** for a property. Rapid PACE for **the general public hosts an interactive map**, an easy-to-use tool for identifying coastal flooding risk and possible impacts on your property and your community. The Rapid PACE uses existing, [publicly available sources of data](#) that can be [summarized for your property](#).

Data Sources



Sample Report



Municipal officials may [request a Rapid PACE Assessment](#) for a site-specific property to inform planning initiatives or regulatory decisions, and enhance efforts that support safer, more resilient communities.

- 
1. Click [Mapping Tool](#) to view interactive, online maps
  2. Click [Summarized for Your Property](#) for a sample Rapid PACE report
  3. Click [Publicly Available Sources of Data](#) for a list of Rapid PACE’s data sources

## Slide 6

---

**PR1**

text will change when Sarah's edits are made. Also, I think that we should reorder, and put click mapping tool first. This can be useful for public and for munis, who can have a report done for them or they can do it themselves

Pam Rubinoff, 1/17/2018

# Sample Rapid PACE Report

## TABLE OF CONTENTS

- ABOUT THIS REPORT .....
- REPORT INFORMATION.....
- SITE INFORMATION .....
- Site Location.....
- CRMC Jurisdiction .....
- CRMC Special Area Management Plan (SAMP) .....
- CRMC Water Type .....
- DEM Critical Resource Management Area (CRA).....
- Coastal Freshwater Wetlands Jurisdiction .....
- EXISTING RISKS.....
- Erosion .....
- FEMA Flood Zones.....
- U.S. Fish & Wildlife Service Coastal Barrier Resource System (CBRS) .....
- Storm Surge -- 100 Year Storm w/ no Sea Level Rise.....
- Hurricane Evacuation .....
- FUTURE RISKS.....
- Sea Level Rise and Storm Surge .....
- Wetland Migration.....
- COMMUNITY RISK.....
- Vulnerable Roads and Bridges .....
- DEFINITIONS.....
- RESOURCES .....

## RapidPACE

### EXISTING RISKS

#### Erosion

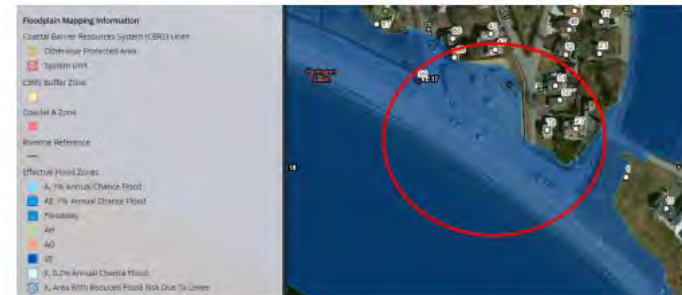
CRMC [Shoreline Erosion maps](#) show shoreline rates of change that are applied to the CRMC's regulatory program to establish construction setbacks from coastal features.

Shoreline erosion has not seriously impacted the site since record keeping began in 1939.

#### FEMA Flood Zones

[The Rhode Island Floodplain Mapping Tool](#) (RIEMA) is an online mapping resource that shows the regulatory flood zones developed for the FEMA National Flood Insurance Program and the RI State Building Code. This tool provides users with current flood risk for residences, businesses, or other structures statewide. While the tool is not intended for legal, engineering, or surveying purposes, it does provide users with an approximate FEMA flood zone determination relative to the flood hazard areas delineated on FEMA's FIRMs. The FEMA FIRM designations will determine construction requirements for new or substantially improved structures. See your local building official for more information.

The property lies within the VE18 FEMA flood zone. VE flood zones are described as "Coastal areas with a 1% or greater chance of flooding and an additional hazard associated with storm waves. These areas have a 26% chance of flooding over the life of a 30 year mortgage." (CRMC RI Coastal Property Guide)





# Rapid PACE Data Sources Available

Provides links to:

- RIGIS - RI Geographical Information Systems
- CRMC
- RIDEM
- RIEMA
- etc

## Evacuation Areas

- Data and information for Evacuation Areas available from RIEMA
  - o <http://www.riema.ri.gov/resources/citizens/prepare/evacuation.php>
- Data available for download from RIGIS
  - o <http://www.rigis.org/data/evacAreas>

## STORMTOOLS storm surge and sea level rise (1% Chance Annual Flood: 1% Flood + 7ft SLR: 3ft SLR)

- Sea level rise data and information available from STORMTOOLS
  - o <http://www.beachsamp.org/stormtools/>
  - o <http://www.beachsamp.org/stormtools/stormtools-interactive-maps/>
- Downloadable data available from RIGIS
  - o <http://www.rigis.org/data/stormtools>
  - o [http://www.rigis.org/data/stormtools\\$dot](http://www.rigis.org/data/stormtools$dot)
- Sea level rise curves available from US Army C
  - o <http://corpselmate.us/cspaces/curves.cfm>

## Sea Level Affecting Marsh Migration (SLAMM) 1ft:

- SLAMM information available from CRMC
  - o [http://www.crmc.ri.gov/maps/maps\\_slam](http://www.crmc.ri.gov/maps/maps_slam)
- Downloadable data available from RIGIS
  - o <http://www.rigis.org/data/SLAMM>

## Coastal Barriers

- Downloadable data available from RIGIS
  - o <http://www.rigis.org/datasets/coastal-bar>
- Coastal Barrier online mapping tool available from <https://www.tvs.gov/chra/maps/Mapper>

Rapid PACE was developed by the [URI Coastal Resour Grant](#), in collaboration with the [University of Coe Network \(EDFN\)](#), which works on community prepare Smith-Lever Special Needs Competitive Grants Program Agriculture at the U.S. Department of Agriculture.

For more information, please visit the [Rapid PACE website](#) or contact the Rhode Island Coastal Resources Center (ccondit@uri.edu) with



## Special Area Management Plan (SAMP)

- Data obtained from the Rhode Island Coastal Resources Management Council (CRMC) Special Area Management Plan (SAMP) website
  - o <http://www.crmc.ri.gov/samps.html>

## Water Type

- Coastal Water type data obtained from CRMC
  - o [http://www.crmc.ri.gov/maps/maps\\_wateruse.html](http://www.crmc.ri.gov/maps/maps_wateruse.html)

## Critical Resource Area (CRA)

- Critical Resource Area data used for onsite wastewater treatment systems obtained from the Rhode Island Department of Environmental Management (RIDEM)
  - o <http://www.dem.ri.gov/programs/water/owts/>
  - o <http://www.dem.ri.gov/programs/water/owts/regulations-reports/crabndry.php>
- Data is also [viewable online](#)

## Coastal Wetlands

- Wetland data and information obtained from RIDEM
  - o <http://www.crmc.ri.gov/maps.html>
- Data available for download from RIGIS
  - o <http://www.rigis.org/data/cst/WetPres>
  - o <http://www.rigis.org/data/NWI>

## Shoreline Change

- Shoreline Change data and information obtained from CRMC. Online maps available for download at:
  - o [http://www.crmc.ri.gov/maps/maps\\_shorechange.html](http://www.crmc.ri.gov/maps/maps_shorechange.html)
- Online map viewer available
  - o <http://www.beachsamp.org/coastal-erosion-maps/>
  - o Shoreline Change from 1939-2014 [online map](#)

## Flood Zones



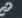
- Flood zone data and information obtained from the Federal Emergency Management Agency (FEMA) and the Rhode Island Emergency Management Agency (RIEMA). Online flood zone mapper viewable at:
  - o <http://www.riema.ri.gov/resources/citizens/mitigation/mapping.php>
- Additional information is available at the FEMA Map Service Center
  - o <https://msc.fema.gov/portal>




# Interactive Maps

## Rapid Property Assessment and Coastal Exposure (Rapid PACE)

In the Ocean State more frequent and severe storms, combined with accelerating sea level rise require informed responses by property owners and local decision makers.

A story map   



**Intro** | SAMP | Water Type | CRA | Wetlands | Shoreline Change | FEMA Flood | Evacuation | 3' SLR | Storm (100-year) | Storm + 7' SLR | Marsh 1' SLR | Marsh 3' SLR | Marsh 5' SLR | Coastal Barriers | Helpful Resources

Rapid Property Assessment and Coastal Exposure (Rapid PACE) helps local officials and property owners view areas exposed to coastal hazards, such as storms and rising seas. Looking at current and future conditions enables more informed planning decisions, leading to safer and more resilient communities.

Find your home, proposed project or your favorite beach – will it experience impacts from sea level rise? Look at your local high school – is it in a hurricane evacuation zone?

Local officials [can request an evaluation and site report](#) using Rapid PACE information.

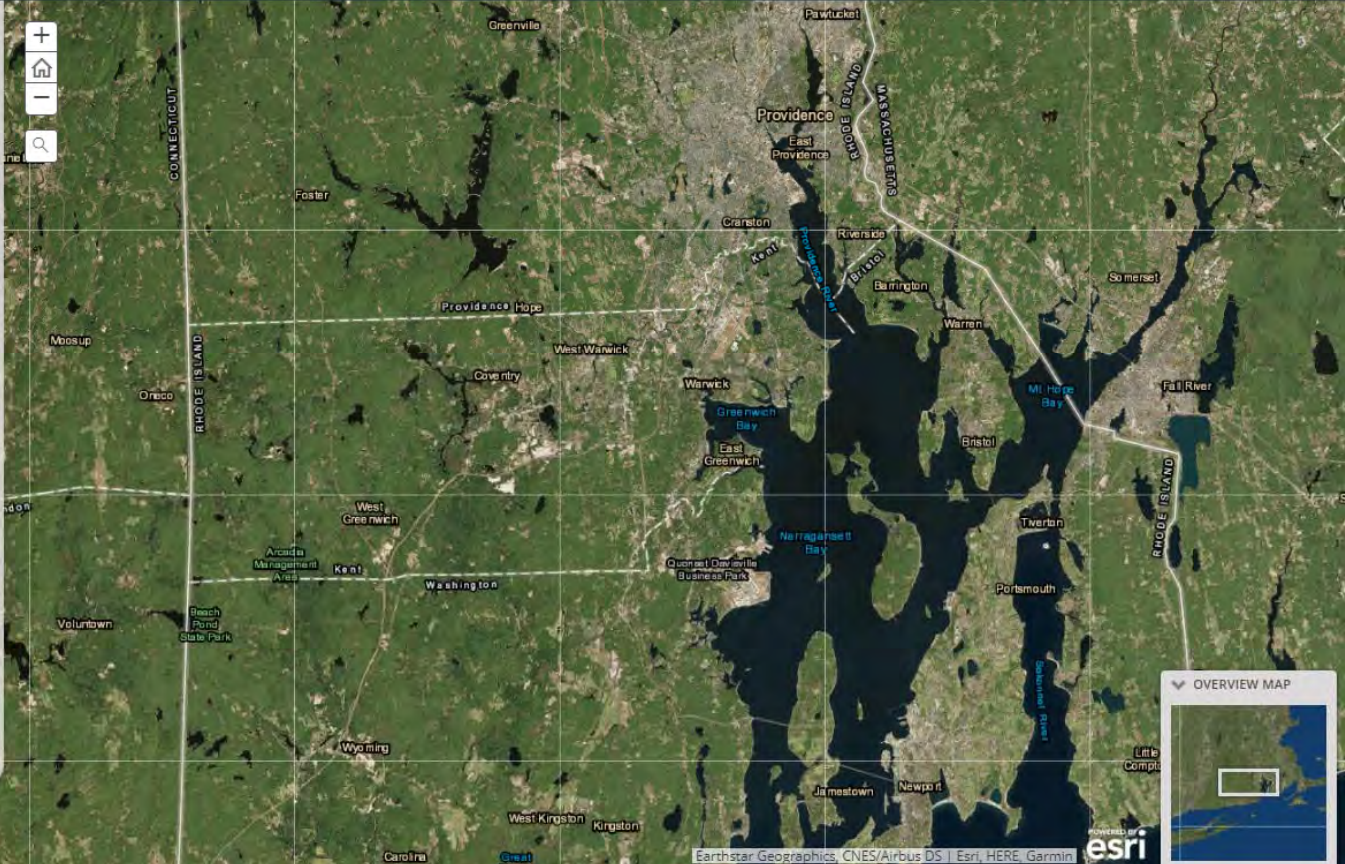
Using the Rapid PACE tool is easy!

1. Use the "+" and "-" symbol in the top left corner of the map to zoom to your area of interest. Use  to enter and zoom to a specific address.
2. Click and drag on the map to move to different parts of the state.
3. Click the tabs on the top of the map to view different types of information.
4. Be patient. It may take a few minutes for maps to load. They are not broken; they are just loading a lot of information!

This tool uses [publicly available sources of data](#), accessed from Rhode Island Geographical Information Systems (IGIS), the Coastal Resources Management Council, and Rhode Island Emergency Management Agency among others.

Rapid PACE was developed by the [URI Coastal Resources Center](#) and [Rhode Island Sea Grant](#), in collaboration with the [University of Connecticut Extension Disaster Education Network \(EDEN\)](#), which works on community preparedness. The project is funded by the [Smith-Lever Special Needs Competitive Grants Program](#) of the National Institute of Food and Agriculture at the U.S. Department of Agriculture.

For more information, please visit [our website](#) or contact the University of Rhode Island Coastal Resources Center (ccondit@uri.edu) with any questions or comments.



# Rapid Property Assessment and Coastal Exposure (Rapid PACE)

In the Ocean State more frequent and severe storms, combined with accelerating sea level rise require informed responses by property owners and local decision makers.

**Use tabs to view different data**

Intro SAMP **Water Type** CRA Wetlands Shoreline Change 3' SLR FEMA Flood Evacuation Storm (100-year) Storm + 7' SLR

Welcome to Rapid PACE!

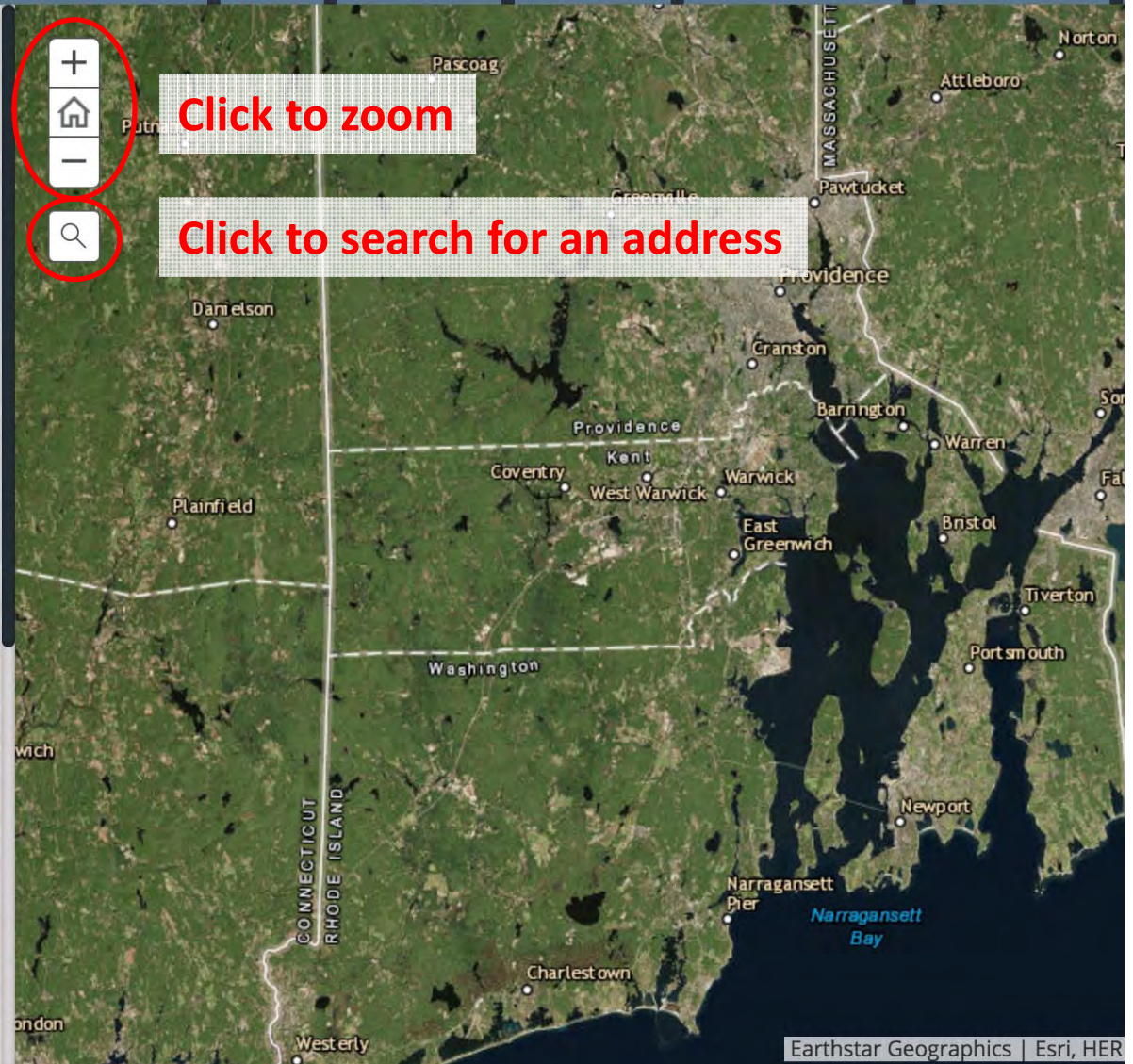
Rapid Property Assessment and Coastal Exposure (Rapid PACE) helps local officials and property owners view areas exposed to coastal hazards. Looking at current and future conditions enables more informed planning decisions, leading to safer and more resilient communities.

Find your property or your favorite beach - will it experience impacts from sea level rise? Look at a local school - is it in a hurricane evacuation zone? The Rapid PACE tool will help you become more informed and aware of the risks and impacts your home and community may experience.

Local officials [can request a site report](#) using this information.

Using the Rapid PACE tool is easy!

1. Use the "+" and "-" symbol in the top left corner of the map to zoom to your area of interest. Use the magnifying glass to enter and zoom to a specific address.
2. Click and drag on the map to move to different parts of the state.
3. Click the tabs on the top of the map to view different types of information.
4. Be patient. It may take a few minutes for maps to load. They are not broken; they are just loading a lot of information!



# Rapid Property Assessment and Coastal Exposure (Rapid PACE)

In the Ocean State more frequent and severe storms are impacting coastal communities and local decision makers.

The selected tab will turn light blue

- Intro
- SAMP
- Water Type**
- CRA
- Wetlands
- Shoreline Change
- FEMA Flood
- Evacuation
- 3' SLR
- Storm (100-year)
- Storm + 7' SLR
- Marsh 1' SLR
- Marsh 3' SLR
- Marsh 5' SLR

Is the property adjacent to a CRMC - designated water type?

- Rhode Island's tidal waters are divided into six water types.
- Different water types may be subject to specific regulations that could affect adjacent shoreline use and development.

The Coastal Resources Management Council (CRMC) classification are based on the characteristics of the adjacent shoreline, the use of the area, the density of use, and various conservation considerations.

- Type 1: Conservation Areas
- Type 2: Low-Intensity Use
- Type 3: High-Intensity Boating
- Type 4: Multipurpose Waters
- Type 5: Commercial & Recreational Harbors
- Type 6: Industrial Waterfronts

These classifications are used by the CRMC to determine the size of required buffer zones between the shoreline and developed areas, whether or not shoreline protection structures can be installed, and what activities may occur within tidal waters.

For additional information about water types in Rhode Island, visit the Coastal Resources Management Council [website](#) (see Section 1.2.1).

## Water Use Categories

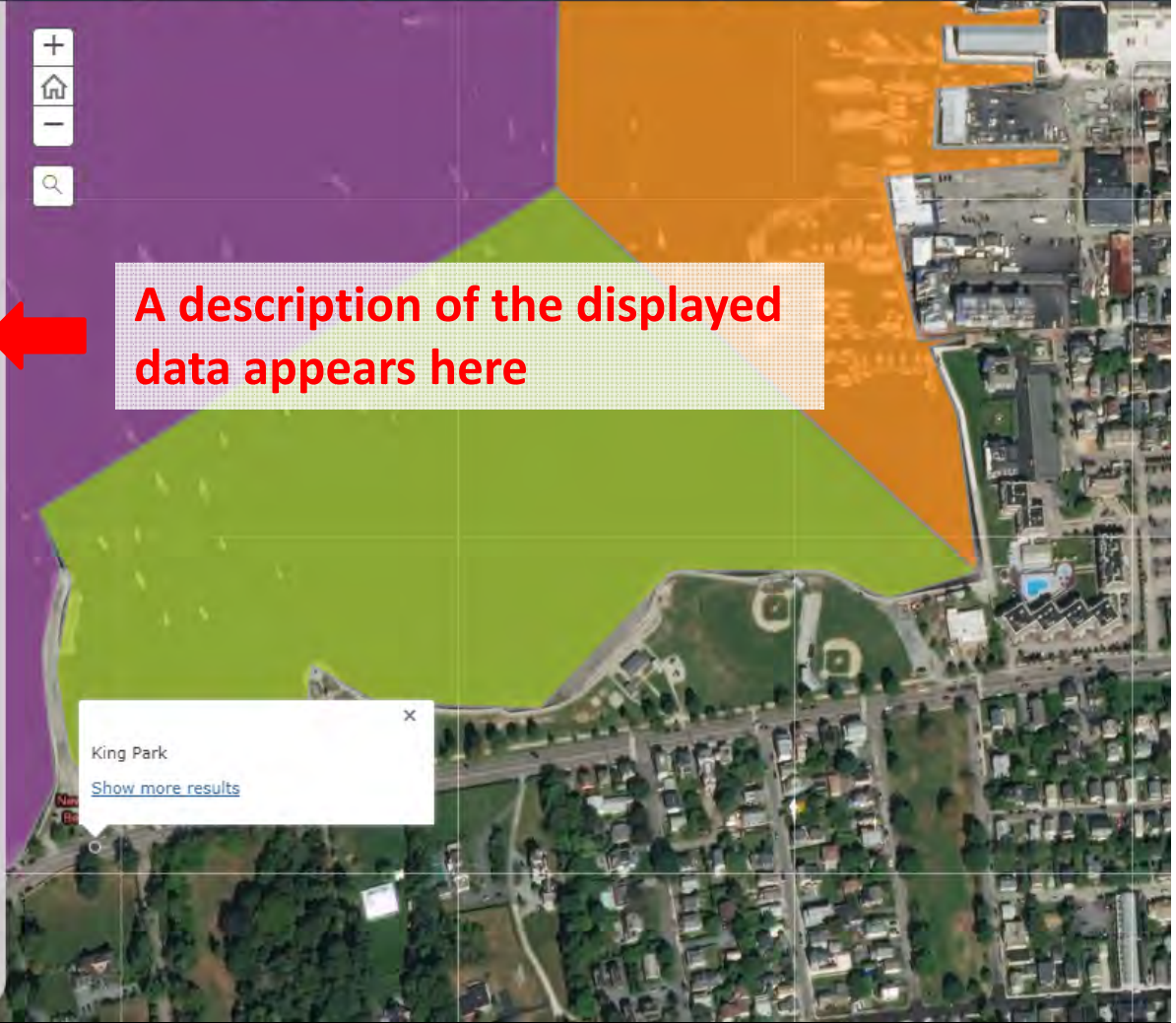
Land

- 1
- 2
- 3
- 5
- 4
- 6



A description of the displayed data appears here

King Park  
[Show more results](#)



**What are some questions the maps can answer?**

# Will King Park, Newport, RI flood during a 100-year storm?

## Rapid Property Assessment and Coastal Exposure (Rapid PACE)

In the Ocean State more frequent and severe storms, combined with accelerating sea level rise require informed responses by property owners and local decision makers.



Intro SAMP Water Type CRA Wetlands Shoreline Change FEMA Flood Evacuation 3' SLR **Storm (100-year)** Storm + 7' SLR Marsh 1' SLR Marsh 3' SLR Marsh 5' SLR Coastal Barriers Helpful Resources

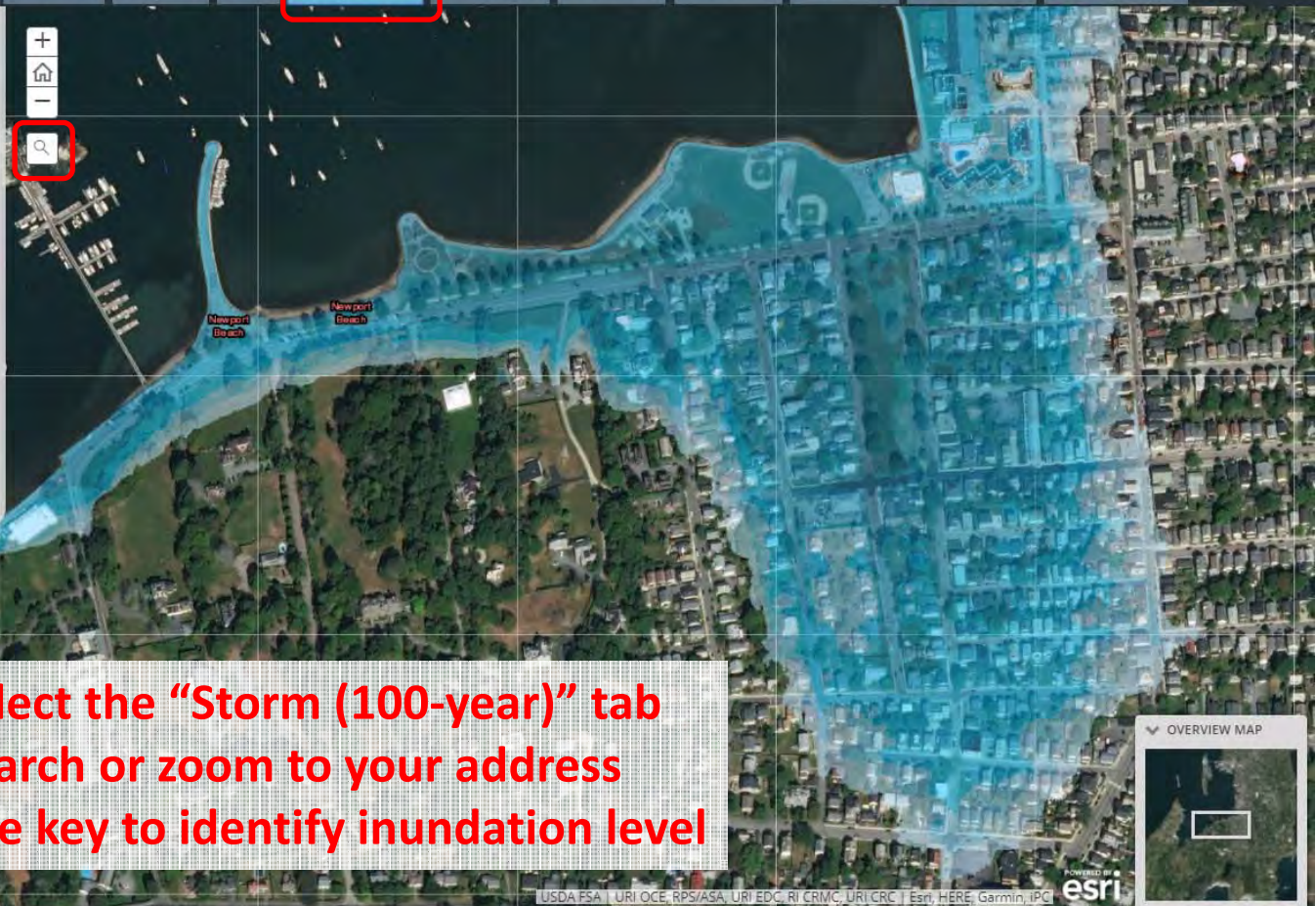
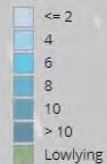
Is the property vulnerable to storm surge from a "100-year" return period storm?

- This map shows flood levels for a "100-year" coastal storm, meaning a storm that has a 1% chance of happening in any given year.\*

**STORMTOOLS** is a high resolution coastal inundation mapping tool that shows levels of inundation for specific areas of interest in Rhode Island. The tool shows inundation from multiple sea level rise and storm surge scenarios. It is an important planning tool to help property owners and decision makers develop coastal resilient adaptation plans for future climate conditions.

\* *STORMTOOLS* planning maps may vary from FEMA regulatory maps due to the modeling approach which makes *STORMTOOLS* more conservative.

### 100 year storm inundation level



1. Select the "Storm (100-year)" tab
2. Search or zoom to your address
3. Use key to identify inundation level

# How DEEP will flooding be at King Park, Newport, RI during a 100-year storm?

## Rapid Property Assessment and Coastal Exposure (Rapid PACE)

In the Ocean State more frequent and severe storms, combined with accelerating sea level rise require informed responses by property owners and local decision makers.



- Intro
- SAMP
- Water Type
- CRA
- Wetlands
- Shoreline Change
- FEMA Flood
- Evacuation
- 3' SLR
- Storm (100-year)**
- Storm + 7' SLR
- Marsh 1' SLR
- Marsh 3' SLR
- Marsh 5' SLR
- Coastal Barriers
- Helpful Resources

Is the property vulnerable to storm surge from a "100-year" return period storm?

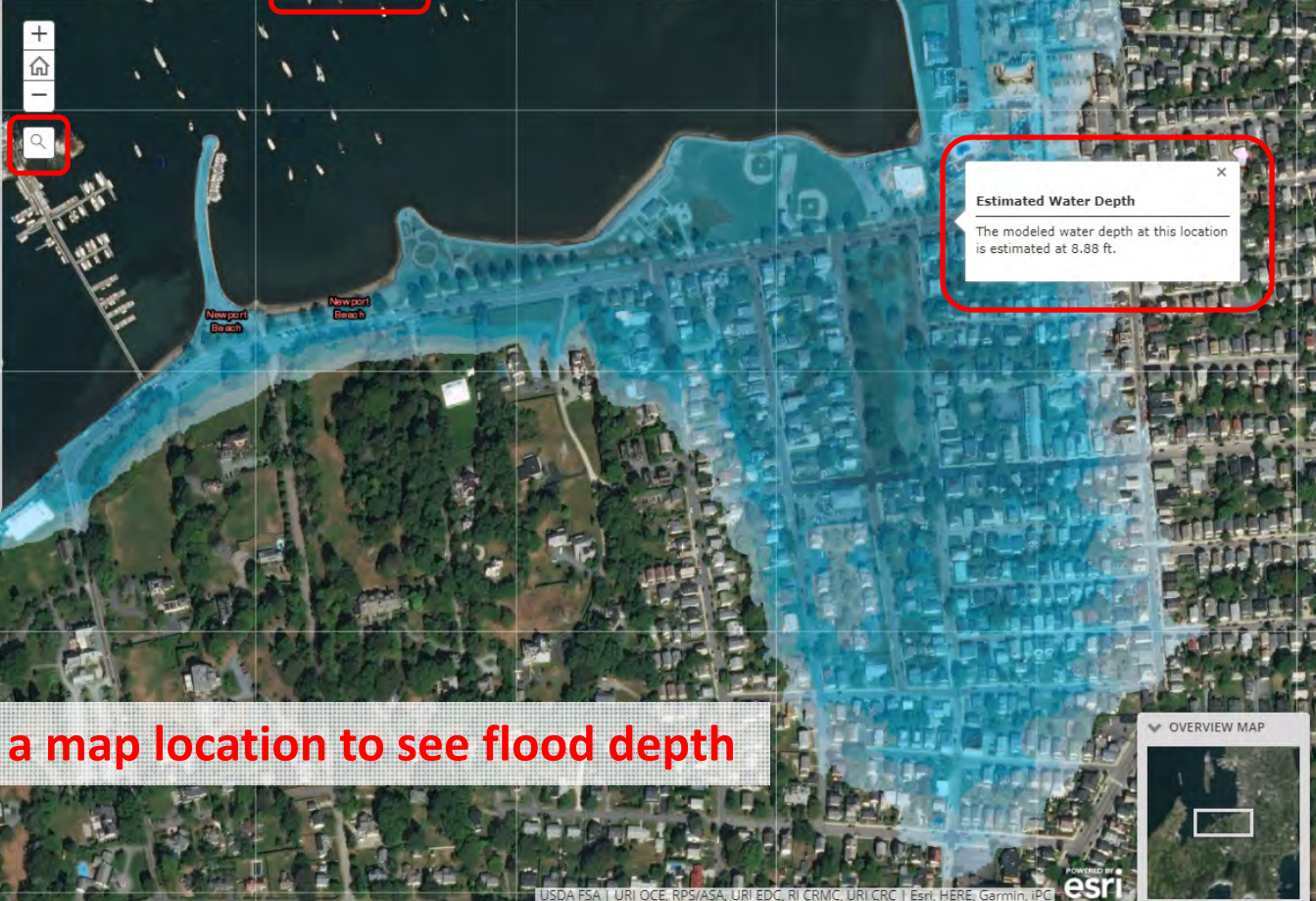
- This map shows flood levels for a "100-year" coastal storm, meaning a storm that has a 1% chance of happening in any given year.\*

STORMTOOLS is a high resolution coastal inundation mapping tool that shows levels of inundation for specific areas of interest in Rhode Island. The tool shows inundation from multiple sea level rise and storm surge scenarios. It is an important planning tool to help property owners and decision makers develop coastal resilient adaptation plans for future climate conditions.

\* STORMTOOLS planning maps may vary from FEMA regulatory maps due to the modeling approach which makes STORMTOOLS more conservative.

### 100 year storm inundation level

- <= 2
- 4
- 6
- 8
- 10
- > 10
- Lowlying



Click a map location to see flood depth

# Will King Park, Newport, RI flood at 3 feet of sea level rise?

## Rapid Property Assessment and Coastal Exposure (Rapid PACE)

In the Ocean State more frequent and severe storms, combined with accelerating sea level rise require informed responses by property owners and local decision makers.



Intro SAMP Water Type CRA Wetlands Shoreline Change FEMA Flood Evacuation **3' SLR** Storm (100-year) Storm + 7' SLR Marsh 1' SLR Marsh 3' SLR Marsh 5' SLR Coastal Barriers Helpful Resources

Using STORMTOOLS, this map estimates the flooding area that will occur with 3 feet of sea level rise, which may occur today during a nor'easter, or by 2060-2070 with projected sea level rise and high tide.

Will sea level rise impact the property?

- NOAA's high estimate (2018) of projected sea level rise, used by Rhode Island's CRMC, is approximately 1 foot in 2025, 3 feet in 2050, and 9 feet in 2100.\*
- Rhode Island is especially vulnerable to sea level rise inundation due to the state's 400 miles of shoreline, including many highly developed coastal shore fronts.

### Design planning horizons recommended by CRMC (Feb. 2017)

Time Horizon	Projected Sea Level Rise: NOAA Sea Level Rise High Curve in Rhode Island	Projected Sea Level Rise with Annual Extreme High Tides
2035	1 foot	2-3 feet
2050	2 feet	3-4 feet
2100	7 feet	8-9 feet

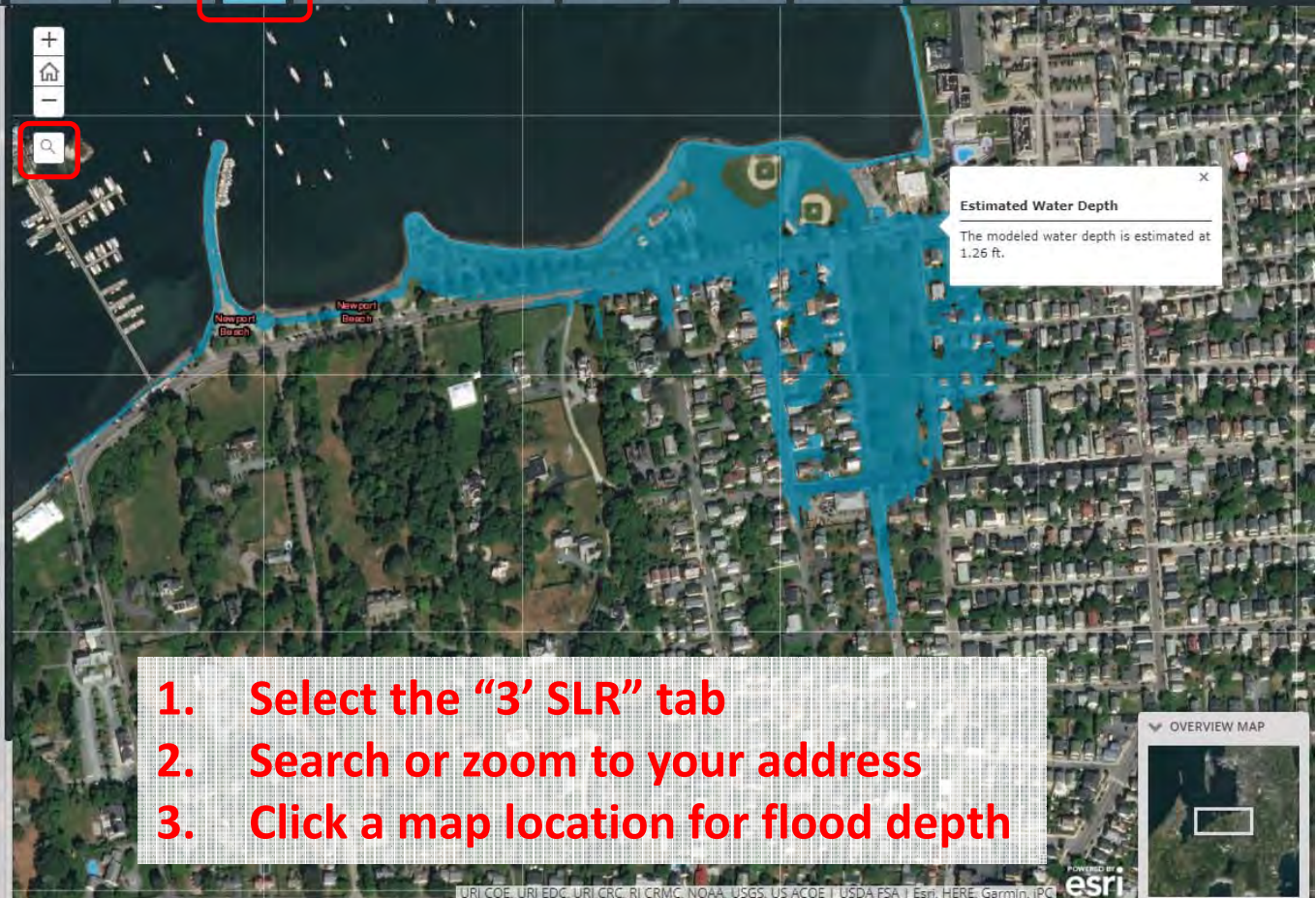
The projections reflect NOAA's high curve on the USACE Sea Level Change Curve Calculator (February 2017), and are based on sea level in 1990 at the Newport Tide Gauge.

The Coastal Resource Management Council considers the US Army Corps of Engineers' Sea-Level Change Calculator to be the standard for estimating future sea level rise. More information about climate change and sea level rise visit Coastal Resources Management Program, Section 1.1.10.

In 2017, the Coastal Resources Management Council (CRMC) updated its sea level rise projections to 1 foot by 2025, 3 feet by 2050 and 9 feet by 2100, based on NOAA's high scenario curve.\*

\*The CRMC relies upon the most recent NOAA sea level rise data to address both short- and long-term planning horizons and the design life considerations for public and private infrastructure. The CRMC policy is to adopt and use the most recent sea level change scenarios published by NOAA, and the NOAA sea level rise change curves for Newport and Providence as provided in the U.S. Army Corps of Engineers online sea level rise calculator tool available \*at: <http://corpsclimate.us/ccaces/curves.cfm>.

The Council requires the use of the NOAA High scenario curve for projecting sea level rise for future conditions. In addition, the Council adopts and recommends use of the STORMTOOLS online mapping tool developed on behalf of the CRMC



1. Select the "3' SLR" tab
2. Search or zoom to your address
3. Click a map location for flood depth



# Do I need to evacuate during a hurricane at King Park, Newport, RI?

## Rapid Property Assessment and Coastal Exposure (Rapid PACE)

In the Ocean State more frequent and severe storms, combined with accelerating sea level rise require informed responses by property owners and local decision makers.



Intro SAMP Water Type CRA Wetlands Shoreline Change FEMA Flood **Evacuation** 3' SLR Storm (100-year) Storm + 7' SLR Marsh 1' SLR Marsh 3' SLR Marsh 5' SLR Coastal Barriers Helpful Resources

Is the property in a Hurricane Evacuation Zone?

- [Hurricane Evacuation Maps](#) for Rhode Island's coastal communities use a worst-case hurricane surge inundation scenario in order to help keep residents safe.
- Evacuation planning maps identify coastal areas at risk of serious impacts from hurricanes and severe storms.

**Evacuation Zone "A" (RED)** is recommended to be evacuated prior to a Category 1 or 2 hurricane.

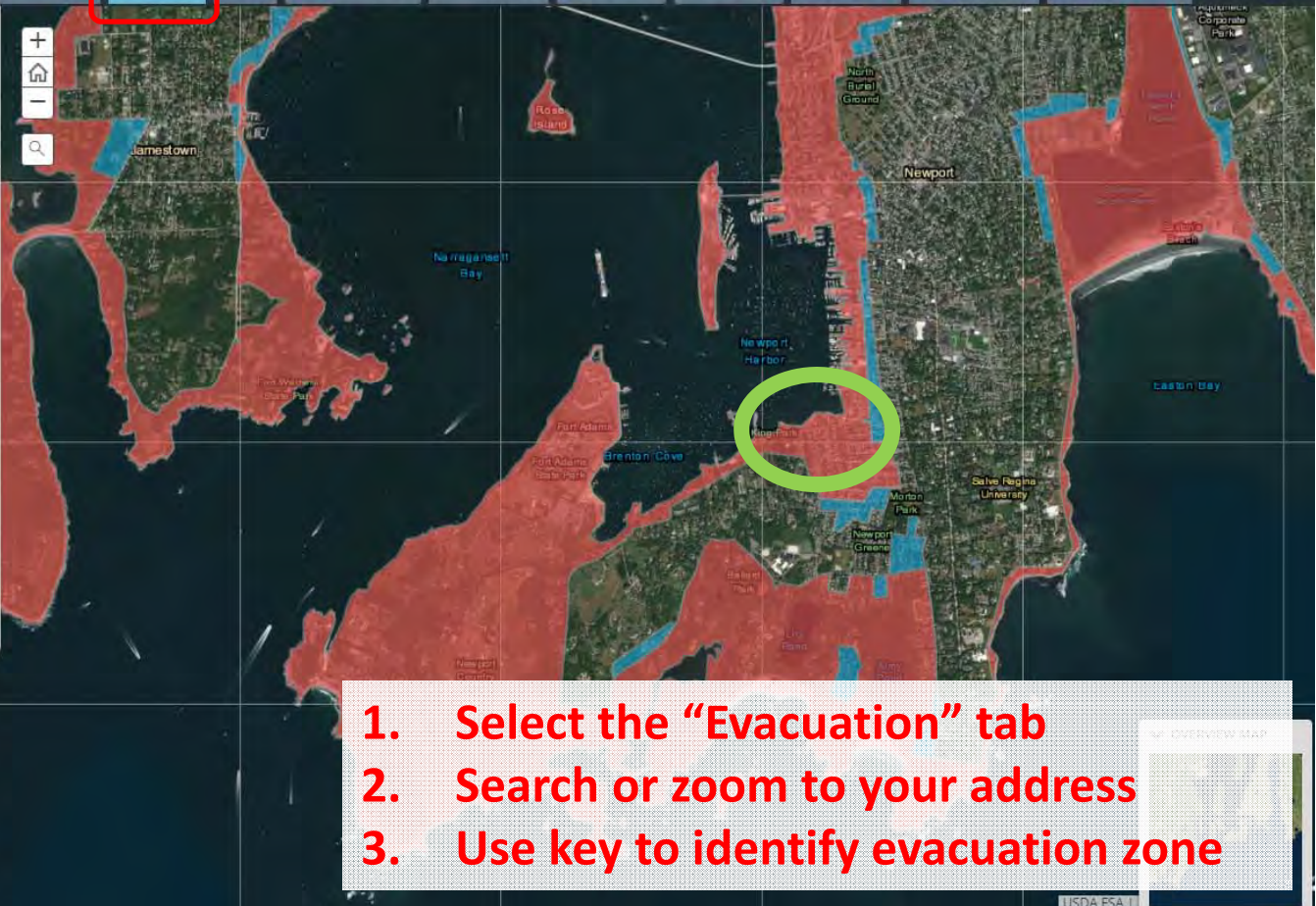
**Evacuation Zone "B" (BLUE)** is recommended to be evacuated prior to a Category 3 or 4 hurricane.

**Evacuation Zone "C" (GREEN)** exists only for the City of Providence. It is recommended that evacuation occurs in the event of the Fox Point Hurricane Barrier falling during a worse case category 3 or 4 hurricane.

For additional information, such as how to evacuate safely or how to locate your local emergency shelter, visit the Rhode Island Emergency Management Agency Evacuation [website](#) or contact your local Emergency Management official.

**\*Note: If the Evacuation Zone is not visible on the map, zoom out until the zones appear.**

Evacuation Zone



1. Select the "Evacuation" tab
2. Search or zoom to your address
3. Use key to identify evacuation zone

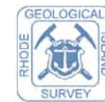
For more information on Rapid PACE, contact:

Teresa Crean, AICP  
[tcrean@uri.edu](mailto:tcrean@uri.edu)

Pam Rubinoff, CFM  
[rubinoff@uri.edu](mailto:rubinoff@uri.edu)

Coastal Resources Center, University of Rhode Island

[www.beachsamp.org/relatedprojects/pace/](http://www.beachsamp.org/relatedprojects/pace/)



# Scarborough Wastewater Treatment Facility (WWTF) 990 Ocean Road, Narragansett, RI

## Rapid Property Assessment and Coastal Exposure (Rapid PACE)

In the Ocean State more frequent and severe storms, combined with accelerating sea level rise require informed responses by property owners and local decision makers.



- Intro
- SAMP
- Water Type
- CRA
- Wetlands
- Shoreline Change
- FEMA Flood
- Evacuation
- 3' SLR
- Storm (100-year)
- Storm + 7' SLR
- Marsh 1' SLR
- Marsh 3' SLR
- Marsh 5' SLR
- Coastal Barriers
- Helpful Resources

### Is the property adjacent to a CRMC - designated water type?

- Rhode Island's tidal waters are divided into six water types.
- Different water types may be subject to specific regulations that could affect adjacent shoreline use and development.

The Coastal Resources Management Council (CRMC) classification are based on the characteristics of the adjacent shoreline, the use of the area, the density of use, and various conservation considerations.

- Type 1: Conservation Areas
- Type 2: Low-Intensity Use
- Type 3: High-Intensity Boating
- Type 4: Multipurpose Waters
- Type 5: Commercial & Recreational Harbors
- Type 6: Industrial Waterfronts

These classifications are used by the CRMC to determine the size of required buffer zones between the shoreline and developed areas, whether or not shoreline protection structures can be installed, and what activities may occur within tidal waters.

For additional information about water types in Rhode Island, visit the Coastal Resources Management Council [website](#) (see Section 1.2.1).

### Water Use Categories

- Land
- 1
- 2
- 3
- 5
- 4
- 6



# Will Scarborough WWTF flood during a 100-year storm?

## Rapid Property Assessment and Coastal Exposure (Rapid PACE)

In the Ocean State more frequent and severe storms, combined with accelerating sea level rise require informed responses by property owners and local decision makers.



- Intro
- SAMP
- Water Type
- CRA
- Wetlands
- Shoreline Change
- FEMA Flood
- Evacuation
- 3' SLR
- Storm (100-year)
- Storm + 7' SLR
- Marsh 1' SLR
- Marsh 3' SLR
- Marsh 5' SLR
- Coastal Barriers
- Helpful Resources

Is the property vulnerable to storm surge from a "100-year" return period storm?

- This map shows flood levels for a "100-year" coastal storm, meaning a storm that has a 1% chance of happening in any given year.\*

STORMTOOLS is a high resolution coastal inundation mapping tool that shows levels of inundation for specific areas of interest in Rhode Island. The tool shows inundation from multiple sea level rise and storm surge scenarios. It is an important planning tool to help property owners and decision makers develop coastal resilient adaptation plans for future climate conditions.

\* STORMTOOLS planning maps may vary from FEMA regulatory maps due to the modeling approach which makes STORMTOOLS more conservative.

### 100 year storm inundation level

- <= 2
- 4
- 6
- 8
- 10
- > 10
- Lowlying



# Will Scarborough WWTF flood during a 100-year storm PLUS 7-ft sea level rise?

## Rapid Property Assessment and Coastal Exposure (Rapid PACE)

In the Ocean State more frequent and severe storms, combined with accelerating sea level rise require informed responses by property owners and local decision makers.



- Intro
- SAMP
- Water Type
- CRA
- Wetlands
- Shoreline Change
- FEMA Flood
- Evacuation
- 3' SLR
- Storm (100-year)
- Storm + 7' SLR
- Marsh 1' SLR
- Marsh 3' SLR
- Marsh 5' SLR
- Coastal Barriers
- Helpful Resources

How will sea level rise and storm surge impact the property?

This map uses [STORMTOOLS](#) to show flood levels for a 100-year return period storm (a storm that has a 1% chance of happening in any given year) with 7 feet of sea level rise projected for the 2075 - 2100 time frame.

100 year storm inundation level plus 7 feet sea level rise

- <= 2
- 4
- 6
- 8
- 10
- > 10
- Lowlying



# How DEEP will flooding be at Scarborough WWTF during a 100-year storm PLUS 7-ft sea level rise?

## Rapid Property Assessment and Coastal Exposure (Rapid PACE)

In the Ocean State more frequent and severe storms, combined with accelerating sea level rise require informed responses by property owners and local decision makers.



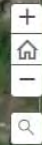
- Intro
- SAMP
- Water Type
- CRA
- Wetlands
- Shoreline Change
- FEMA Flood
- Evacuation
- 3' SLR
- Storm (100-year)
- Storm + 7' SLR
- Marsh 1' SLR
- Marsh 3' SLR
- Marsh 5' SLR
- Coastal Barriers
- Helpful Resources

How will sea level rise and storm surge impact the property?

This map uses [STORMTOOLS](#) to show flood levels for a 100-year return period storm (a storm that has a 1% chance of happening in any given year) with 7 feet of sea level rise projected for the 2075 - 2100 time frame.

100 year storm inundation level plus 7 feet sea level rise

- <= 2
- 4
- 6
- 8
- 10
- > 10
- Lowlying



**Estimated Water Depth**  
The modeled water depth is estimated at 5.47 ft.

