

How to Monitor using Google Earth Pro

1. Download Google Earth Pro

a. Download the free Google Earth Pro on desktop:

<https://www.google.com/earth/desktop/>

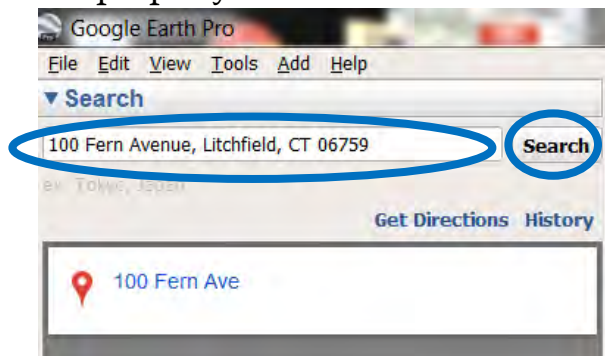
b. Follow the online instructions for a download to your PCs requirements.

2. Open Google Earth Pro

There are two options when using Google Earth for monitoring. Option 1(below) involves using an address to navigate to the property and looking at the area without boundaries. Option 2 (page 2) involves importing a KML file with property boundaries. To use Option 1, it is recommended that you are very familiar with the boundaries of the property you are monitoring.

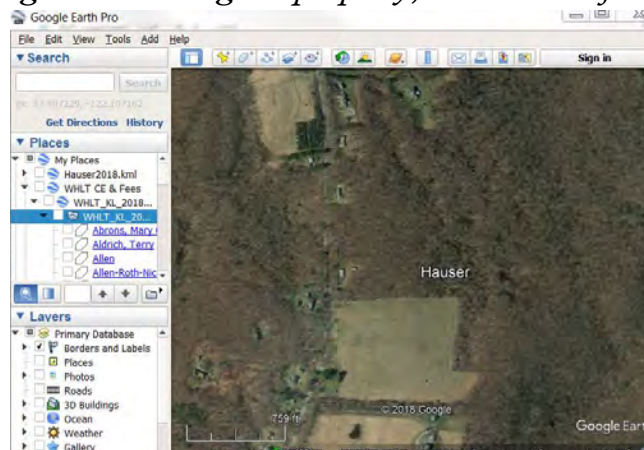
Option 1: Navigate by Address

i. In the blank search field, enter the best-known street address for the property.



ii. Then click the “Search” button.

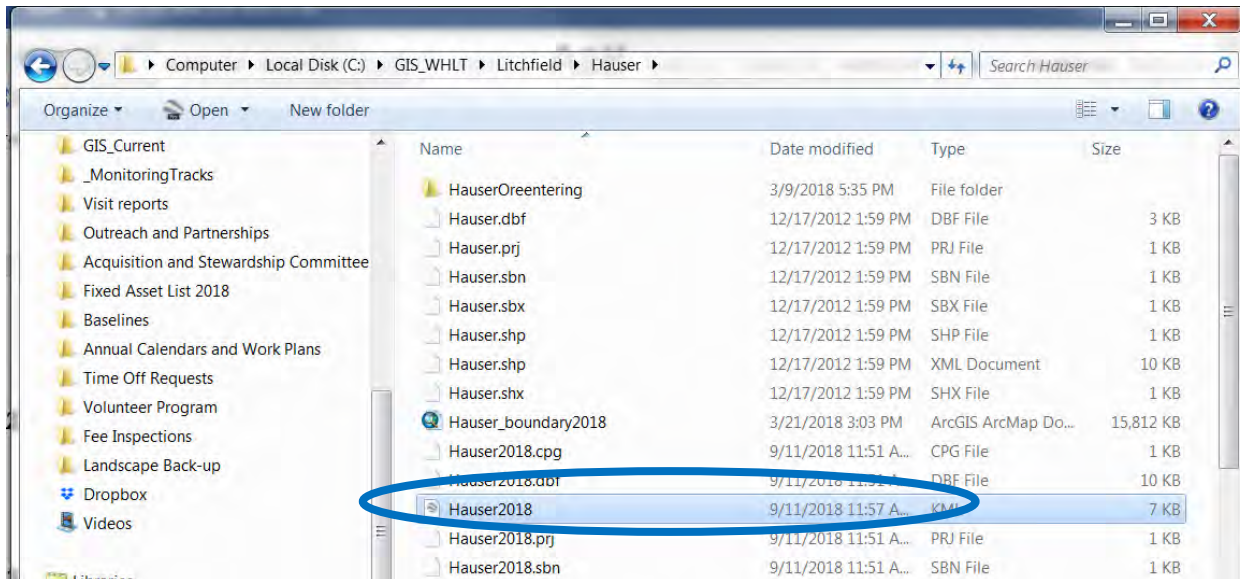
Begin monitoring the property, instructions for step 3 begin on page 4.



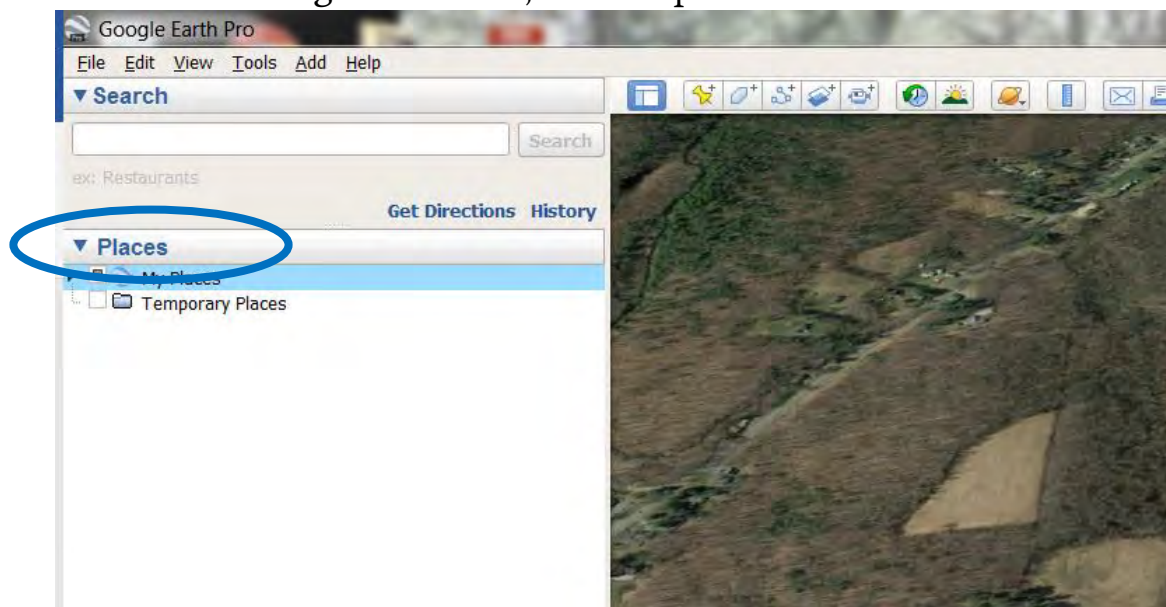
Option 2. Navigate by KML file

To learn how to convert shapefiles or GPX files to KML files please see Appendix A on page 6.

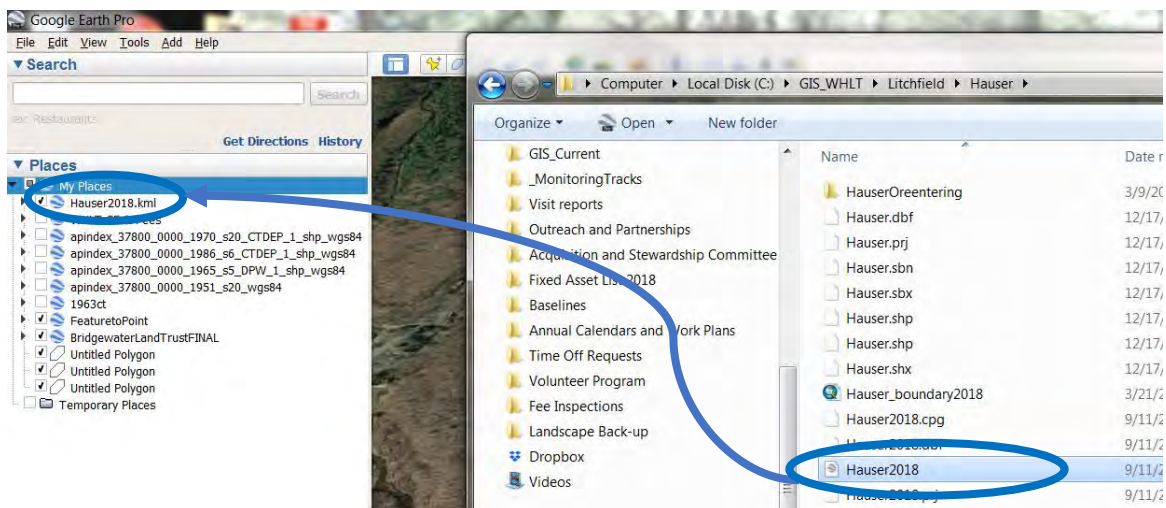
iii. Open file explorer and navigate to where the KML file was saved.



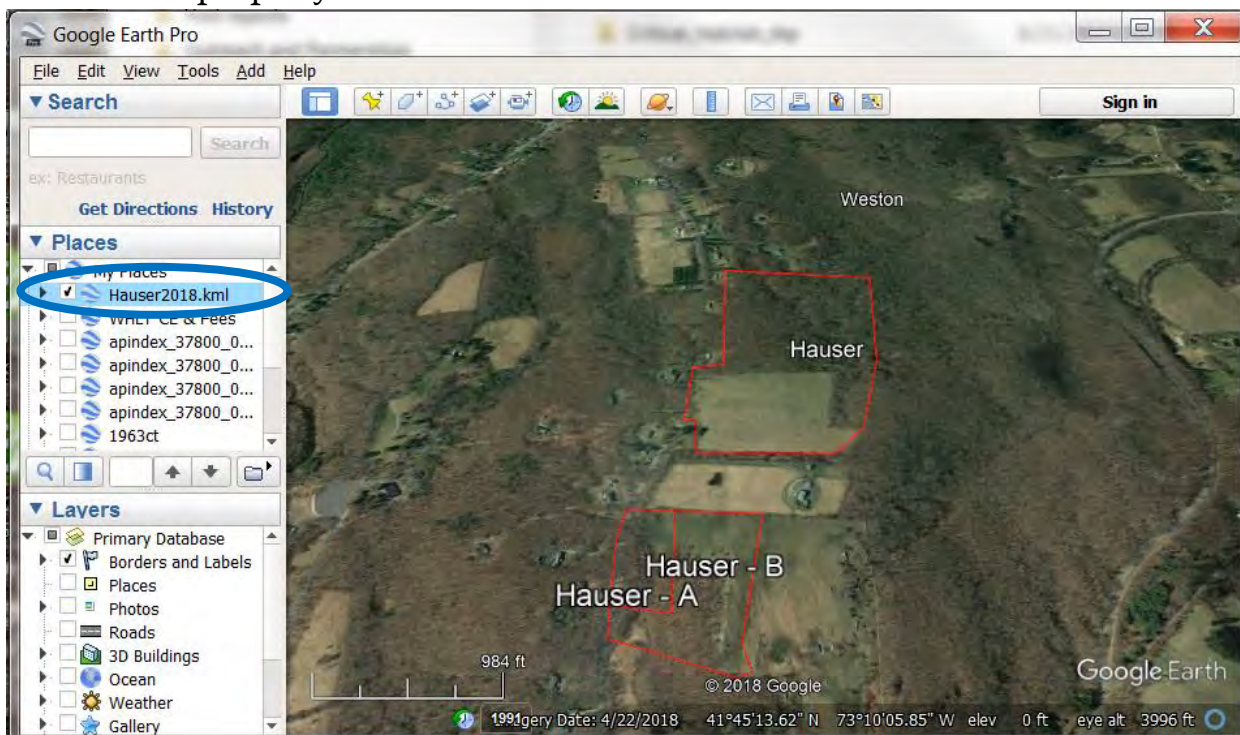
iv. In Google Earth Pro, find the panel to the left labeled “Places.”



- v. Drag and drop KML files onto the Google Earth Pro panel labeled “Places” under “My Places.”

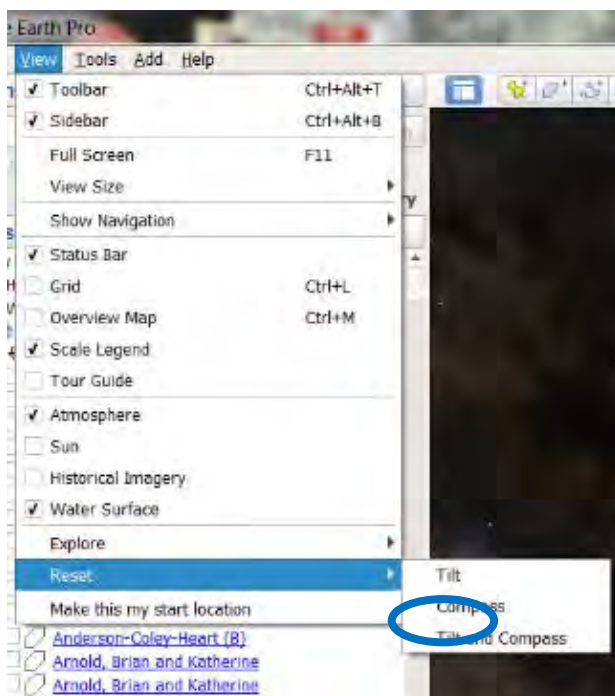


The program should automatically take you to the property, if not, double click on the property in the “Places” column.



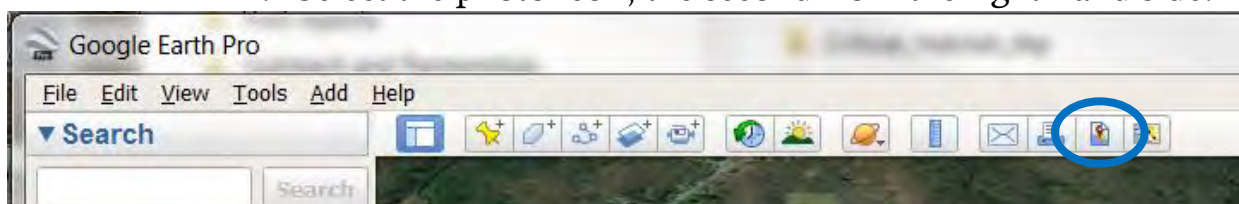
3. Monitor the property

- a. *Necessary step to include a map in your monitoring report:* Take a snapshot of the property using Google Earth by zooming to the greatest extent that shows all the boundaries.
 - i. Remove the tilt by going to the dropdown menu “View” select “Reset” and click “Tilt.”

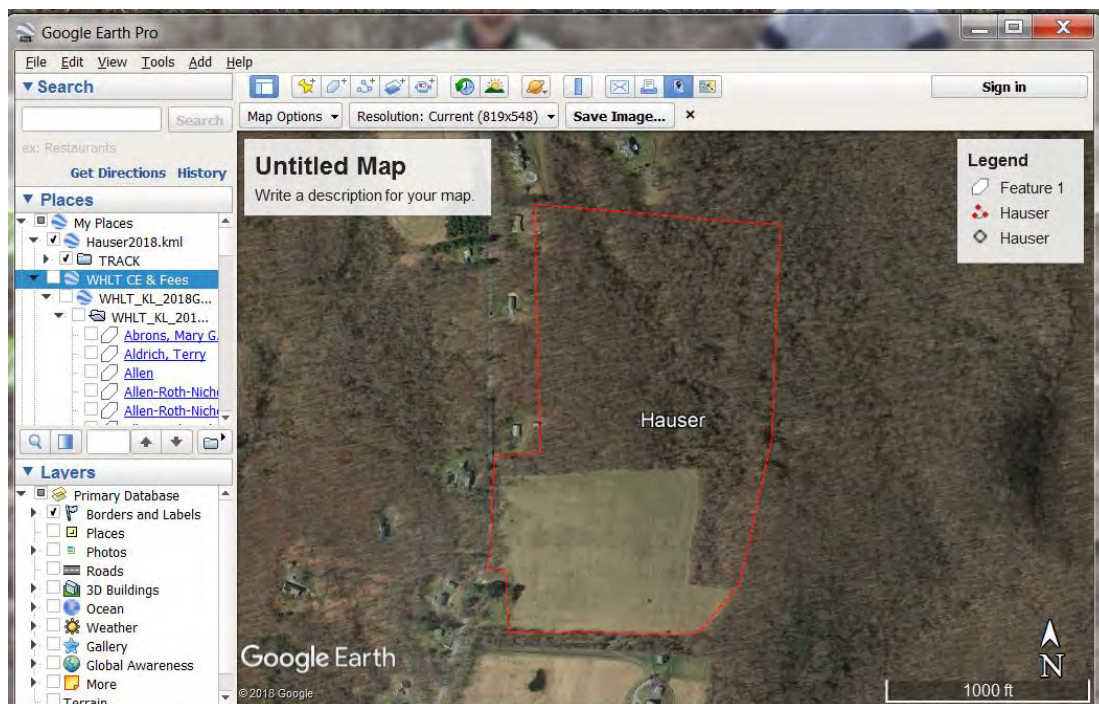


In this same dropdown menu another feature can be found: “Historical Aerials.” By clicking this option another screen will pop up and you will be able to view the same area overtime going back to 1991.

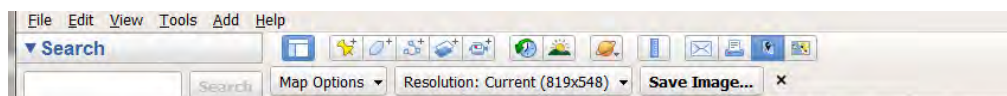
- ii. Select the photo icon, the second from the right-hand side.



- iii. You will be able to add or remove any of the features such as title, legend, north arrow or scale bar in the “Map Options” drop down menu. To write or edit text on the Title or Legend just click on the text to change and type.



- iv. Then click “Save Image”



- b. Zoom in to view the property from about 100 meters up or the closest zoom with the greatest resolution. Move around the property using your mouse. *Watch where your shapefile might be off according to what is on the ground. Stonewalls may still be your best indicator about where your boundary is over the KML boundary.*
- c. Look for anything out of the ordinary (Please refer to the Power Point presentation, if you find something you don't expect.)
- d. Fill out your typical monitoring report noting that you did an aerial visit using Google Earth Pro and add the image saved to the map section of the report.

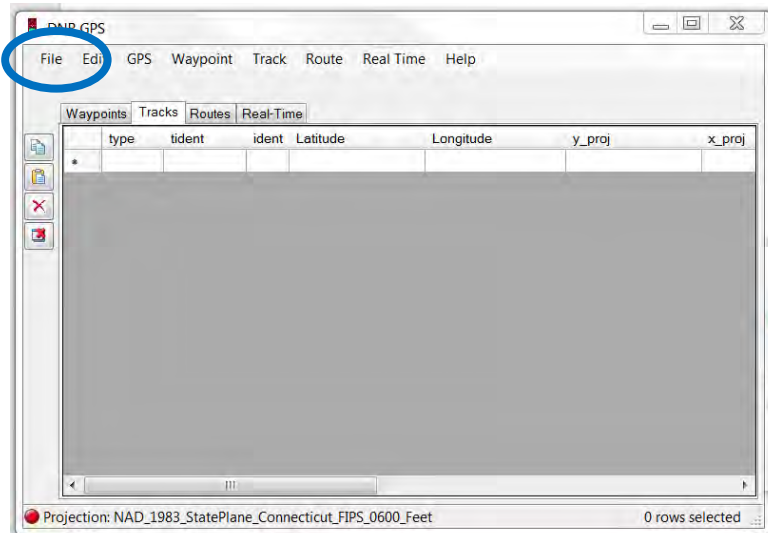
For any questions, contact,

KATE LOSEY *Conservation Easement Manager*
Weantinoge Heritage Land Trust, Inc.

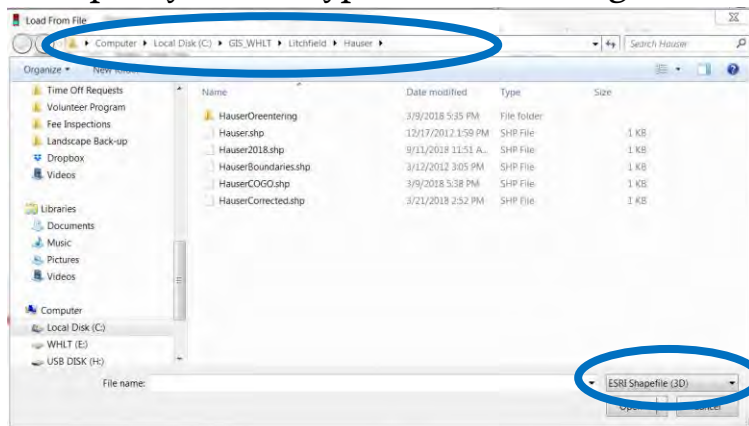
kate@weantinoge.org
Office: (860) 927-1927

Appendix A

1. Convert GPX or Shapefiles (SHP) to KML (Google Keyhole Markup Language)
 - a. Download a free converter tool on the web.
<https://www.dnr.state.mn.us/mis/gis/DNRGPS/DNRGPS.html>
 - b. Once downloaded, Open DNR GPS app.
 - c. Load the GPX or SHP file to DNR GPS, select drop down menu “File” and select “Load from” and select “file.”

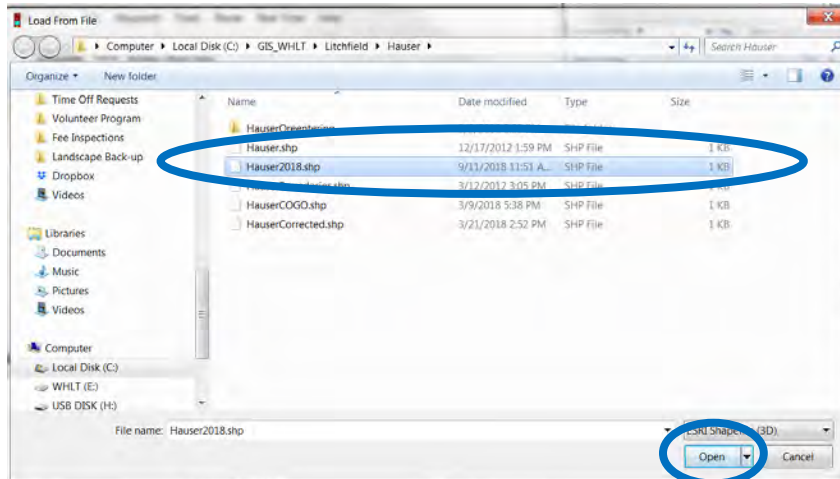


- d. In the pop-up window, select the file path to the folder containing the file and specify the file type in the lower right hand corner:

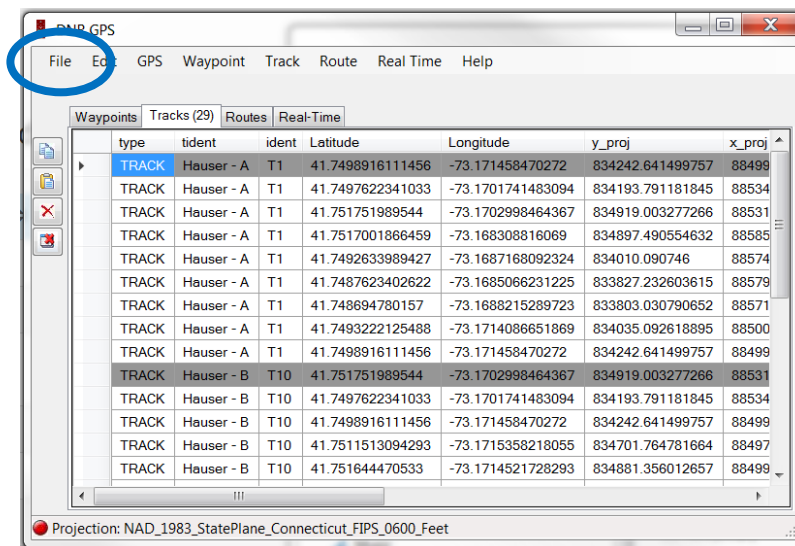


For Shapefiles select “ESRI Shapefile (3D)”, GPX files select “GPS Exchange Format”

e. Select the file and click “Open.”



f. Now save the file in a different format, select drop down menu “File” and select “Save to” and then select “file.”



g. In the pop up window, type the name of the file and select from the drop down menu “Save as type” “Google Keyhole Markup Language.” Then press “Save.”

