



**DEM**  
RHODE ISLAND

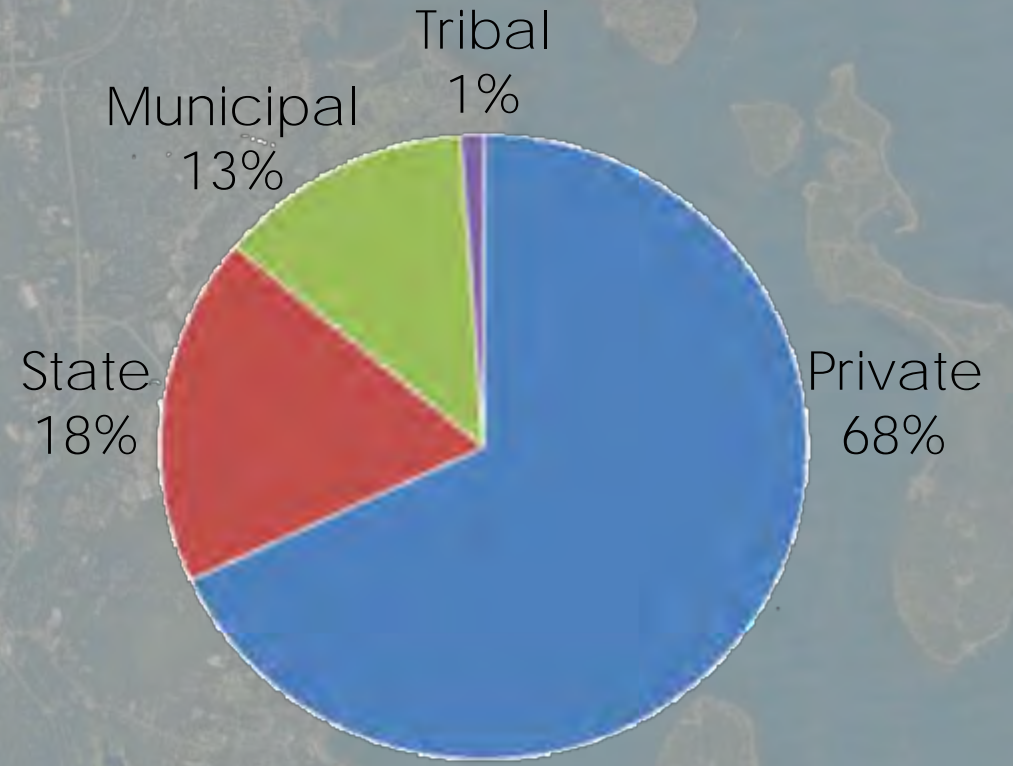
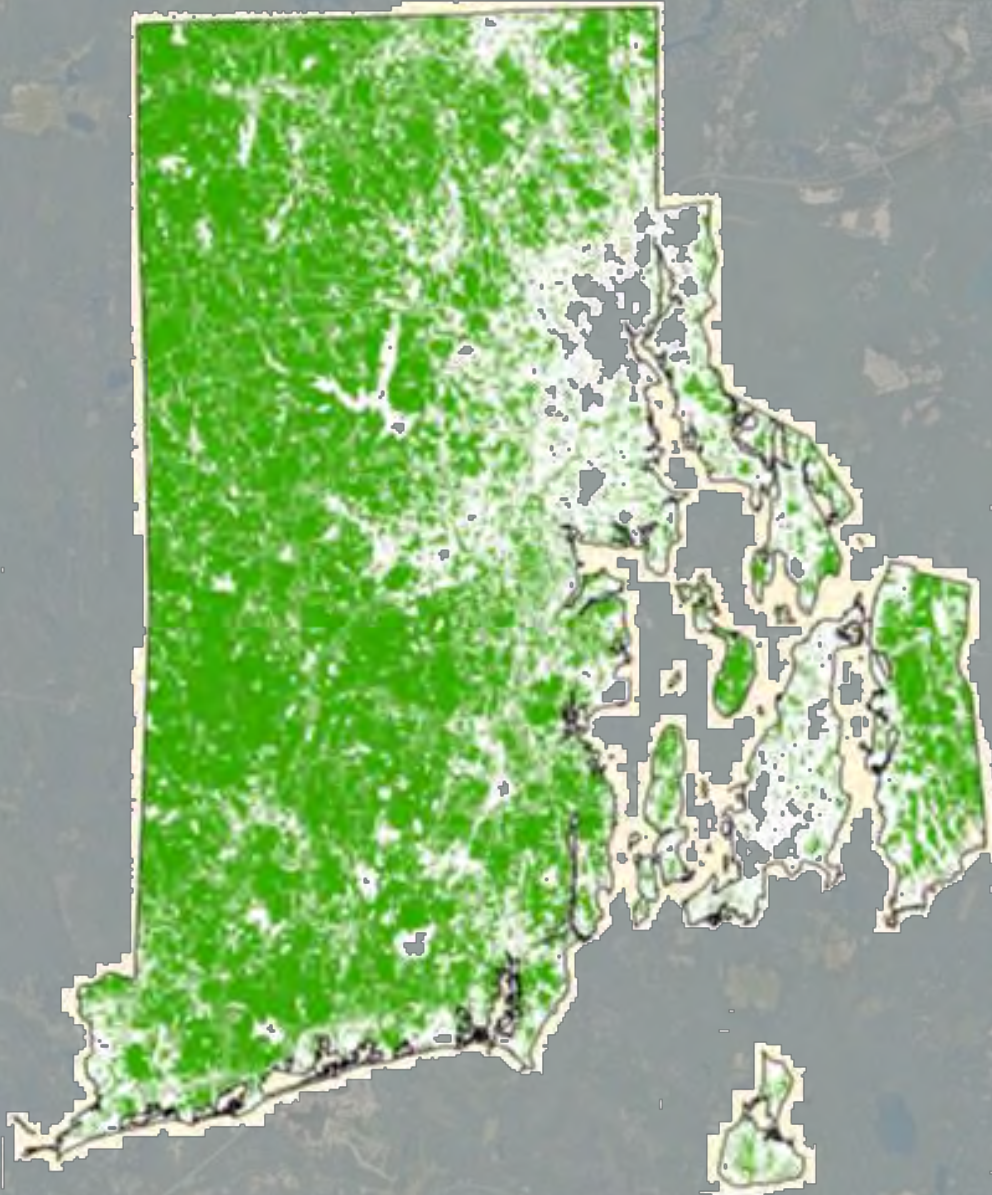
protecting our environment,  
growing our green economy

# Rhode Island Forests ~ and ~ Forestland Protections

Tee Jay Boudreau | Deputy Chief | Division of Forest Environment  
e: [teejay.boudreau@dem.ri.gov](mailto:teejay.boudreau@dem.ri.gov) | p: 401-222-2445 x2059

An aerial photograph of a coastal region, likely Rhode Island, showing a mix of land and water. The land is a mix of green and brown, indicating forested and developed areas. The water is a deep blue. A semi-transparent blue overlay covers the entire image, and the text "RI Forestland Totals" is centered in a dark blue font.

# RI Forestland Totals

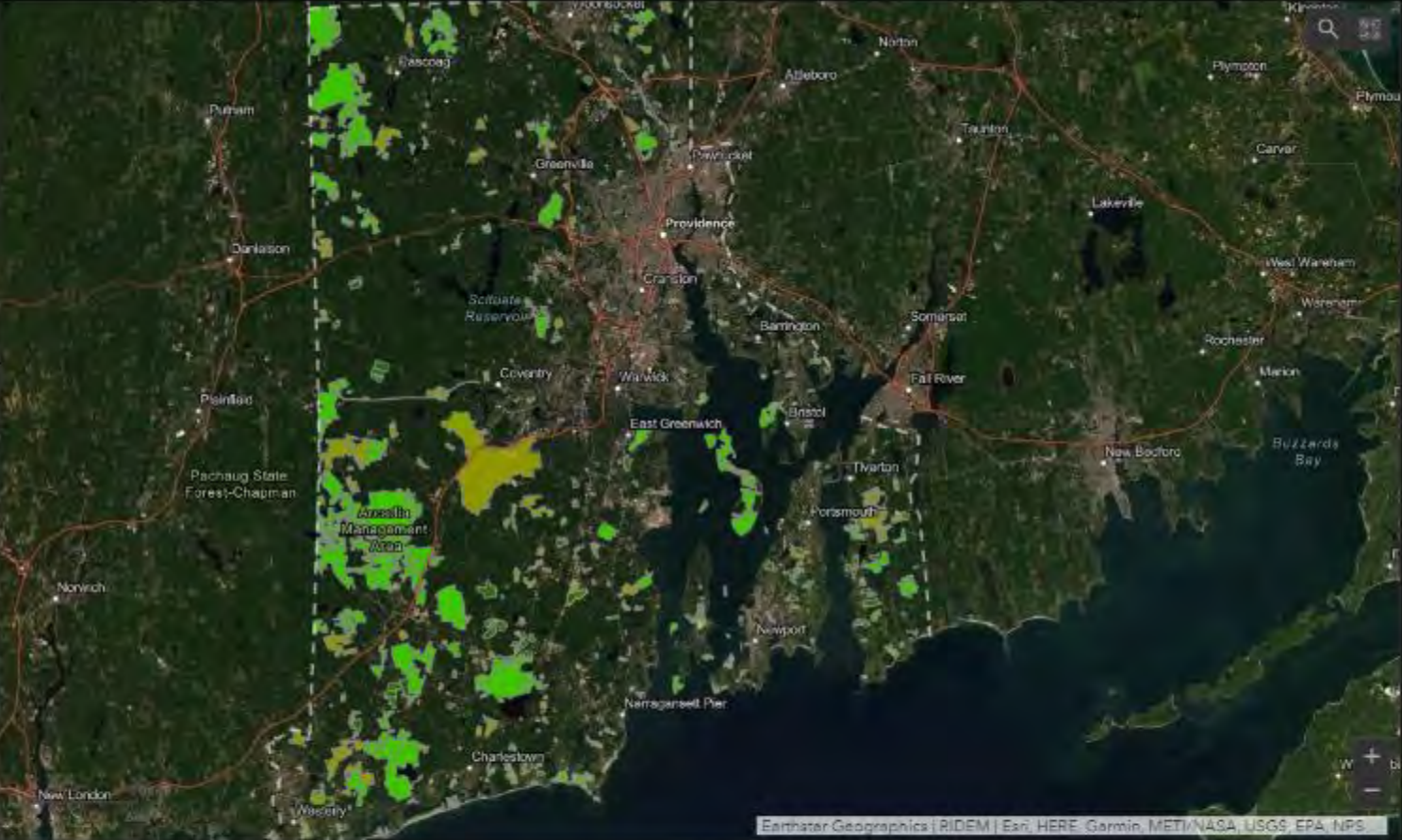


RI Total Acreage: 687,380 acres  
RI Forested Acreage: 368,373 acres  
-----  
56% of RI is covered in Forestland

An aerial photograph of a coastal region, showing a mix of land and water. The land is a mix of green and brown, indicating vegetation and possibly agricultural or developed areas. The water is a deep blue. The entire image is overlaid with a semi-transparent blue filter. The text 'State Land Conservation' is centered in a dark blue, serif font.

# State Land Conservation

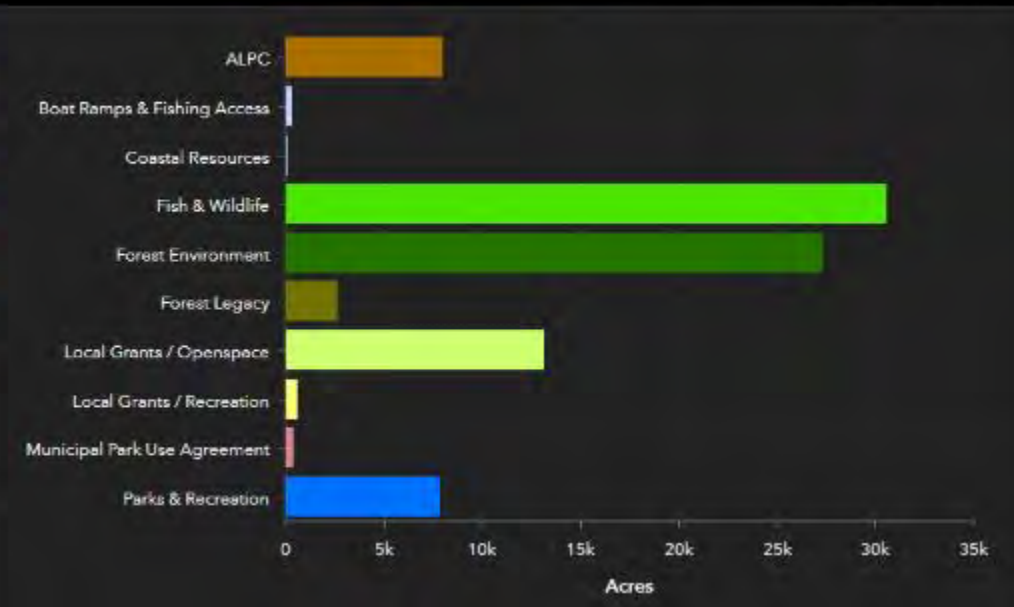
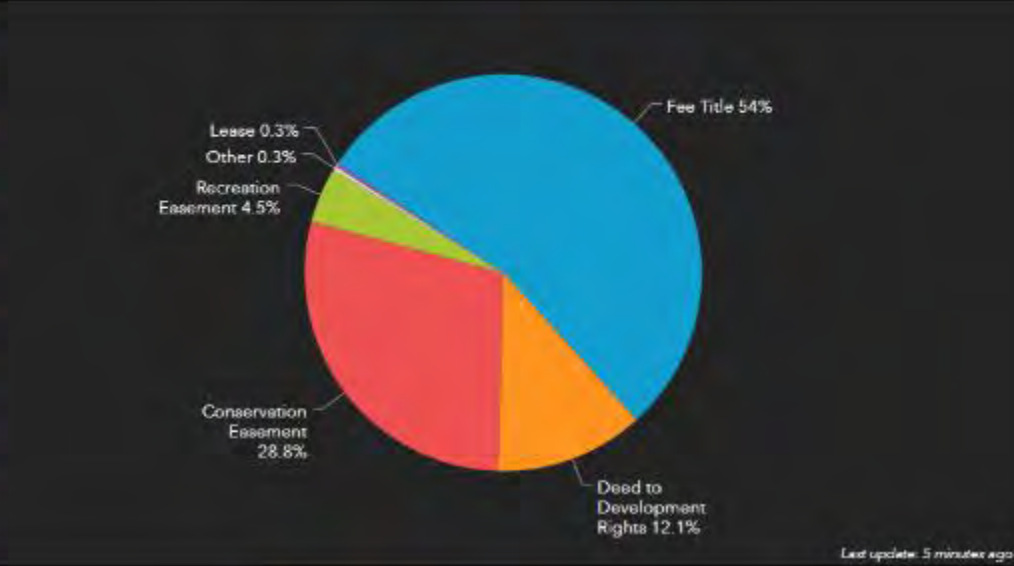
# State Land Conservation Totals to Date

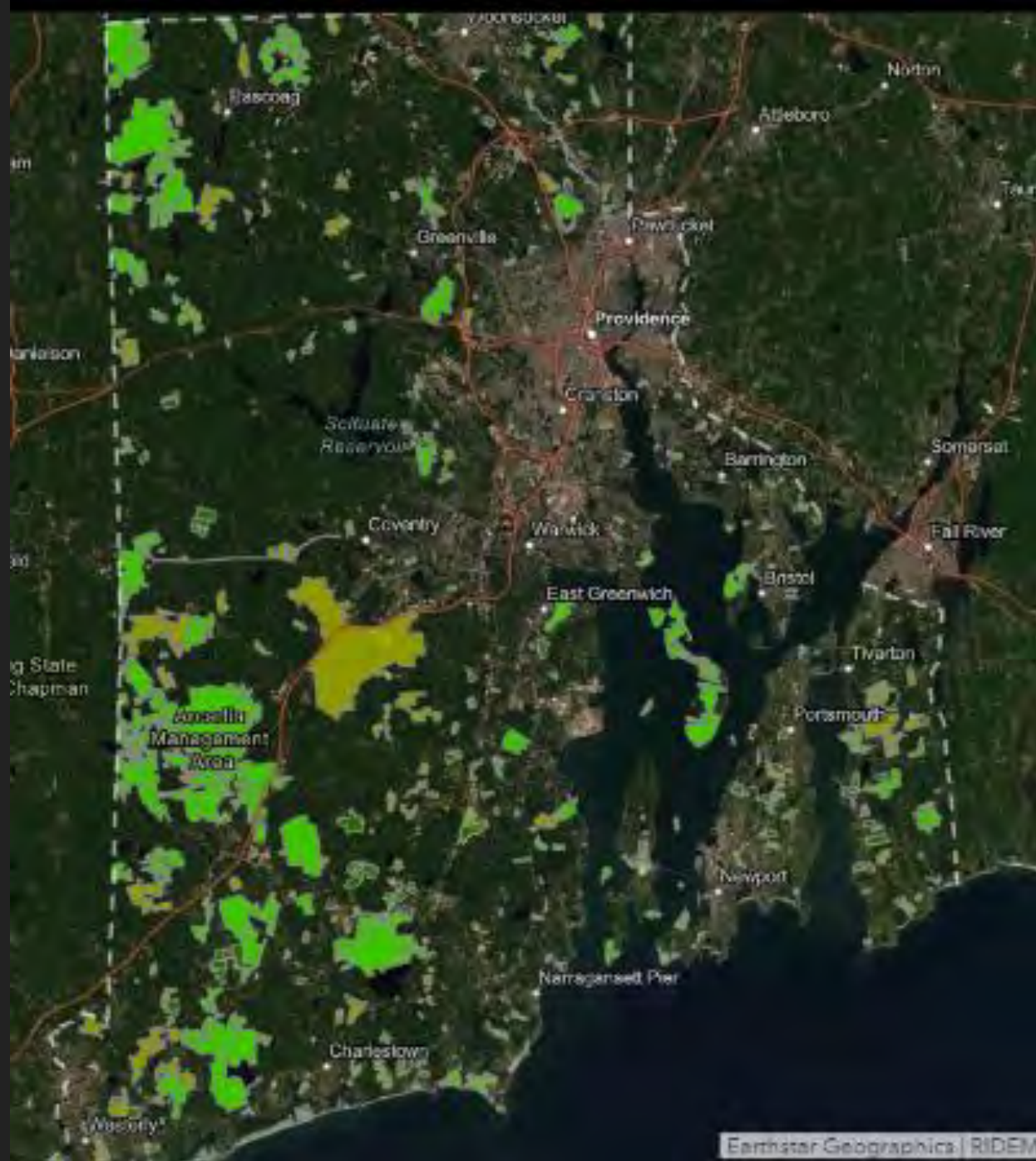


- State Conservation Land**
- Deed to Development Rights
  - Fee Title
  - Conservation Easement
  - Forestry Easement
  - Recreation Easement

Total Acres  
**90,341**  
Last update: 5 minutes ago

Count of Projects  
**952**





An aerial photograph of a coastal wetland area, showing a mix of land and water. The land is a mix of brown and green, with some structures and roads visible. The water is a deep blue. The entire image is overlaid with a semi-transparent blue filter. The text "Conservation Definitions" is centered in a dark blue, serif font.

# Conservation Definitions



Fee Title

Transfer of ownership from  
one party to another

54% of Conservation Land

504 Projects

54,687 acres



An aerial photograph of a coastal region, showing a mix of land and water. The land is a mix of green and brown, indicating vegetation and possibly some development. The water is a deep blue. The text is overlaid on the image in a dark blue, sans-serif font.

Deed to Development  
Restricts future  
development of the land  
12% of Conservation Land  
115 Projects  
7,979 acres



Conservation Easement  
Restricts development for  
conservation objective

29% of Conservation Land

274 Projects

26,810 acres



Recreation Easement  
Restricts development for  
recreational objectives

5% of Conservation Land  
43 Projects  
602 acres

An aerial photograph of a coastal wetland area, showing a mix of land and water. The land is a mix of brown and green, with some structures and roads visible. The water is a deep blue. The entire image is overlaid with a semi-transparent blue filter. The text "Conservation Programs" is centered in the middle of the image in a dark blue, serif font.

# Conservation Programs



Farmland Pres. Program  
Ag. Land Preservation Comm.  
(ALPC)

An aerial photograph of a coastal region, showing a mix of green land, brownish fields, and blue water. The image is semi-transparent, serving as a background for the text.

Ensures farming remains  
viable.

Purchases dev. rights and  
retains farmer ownership

# Funding:

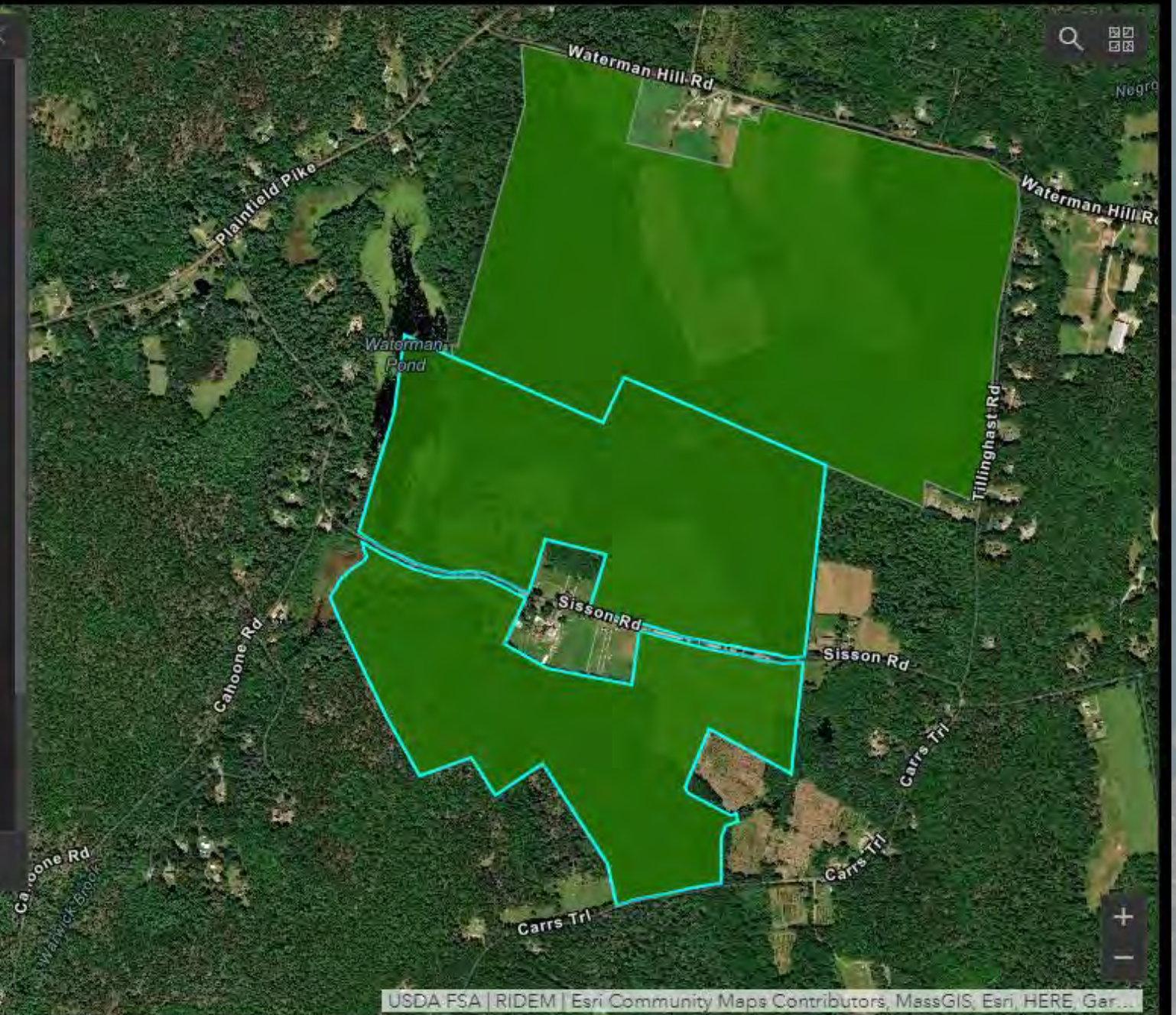
- Open Space Bonds
- Land Trusts
- NGOs
- USDA \$

7,904 Acres  
117 Projects

Showing 1

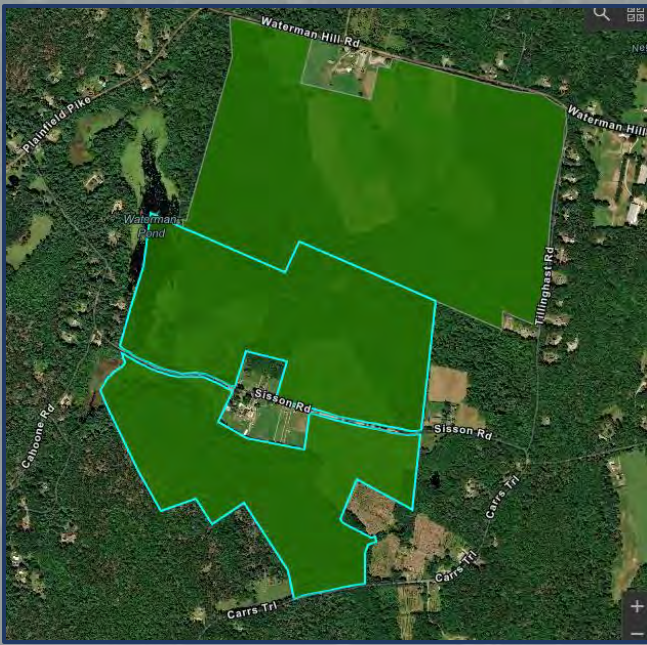
### Broadwall Farm

DEM\_ID 3108  
DEM\_DIV ALPC  
DEM\_AREA Waterman Hill  
NAME Broadwall Farm  
ACQ\_TYPE Deed to Development Rights  
HUNTING No  
FISHING No  
Pub\_Access Public Access Prohibited  
Poly\_Src Town GIS Parcel Data  
Acres 224.7  
Acq\_Year 2016  
BondFund Yes  
NPS\_6f N  
Label Broadwall Farm  
PrimUse Agricultural Land Preservation  
Category1 Agricultural Land Preservation  
Easement





# Broadwall Farm



Includes:

- 18<sup>th</sup> century farmhouse
- Beef heifer operation
- Pasture, Forestland,
- Wetlands, Streams

Abuts another 223 acre farm (protected)  
and 23 acre Audubon property

\$660,000 Purchase

- State Bonds (ALPC) \$375,212
- Nature Conservancy (Champlin Foundation) \$284,788

2020



beach,

clean water,  
and

green A stylized green tree icon with a rounded canopy and a simple trunk, positioned to the right of the word 'green'.

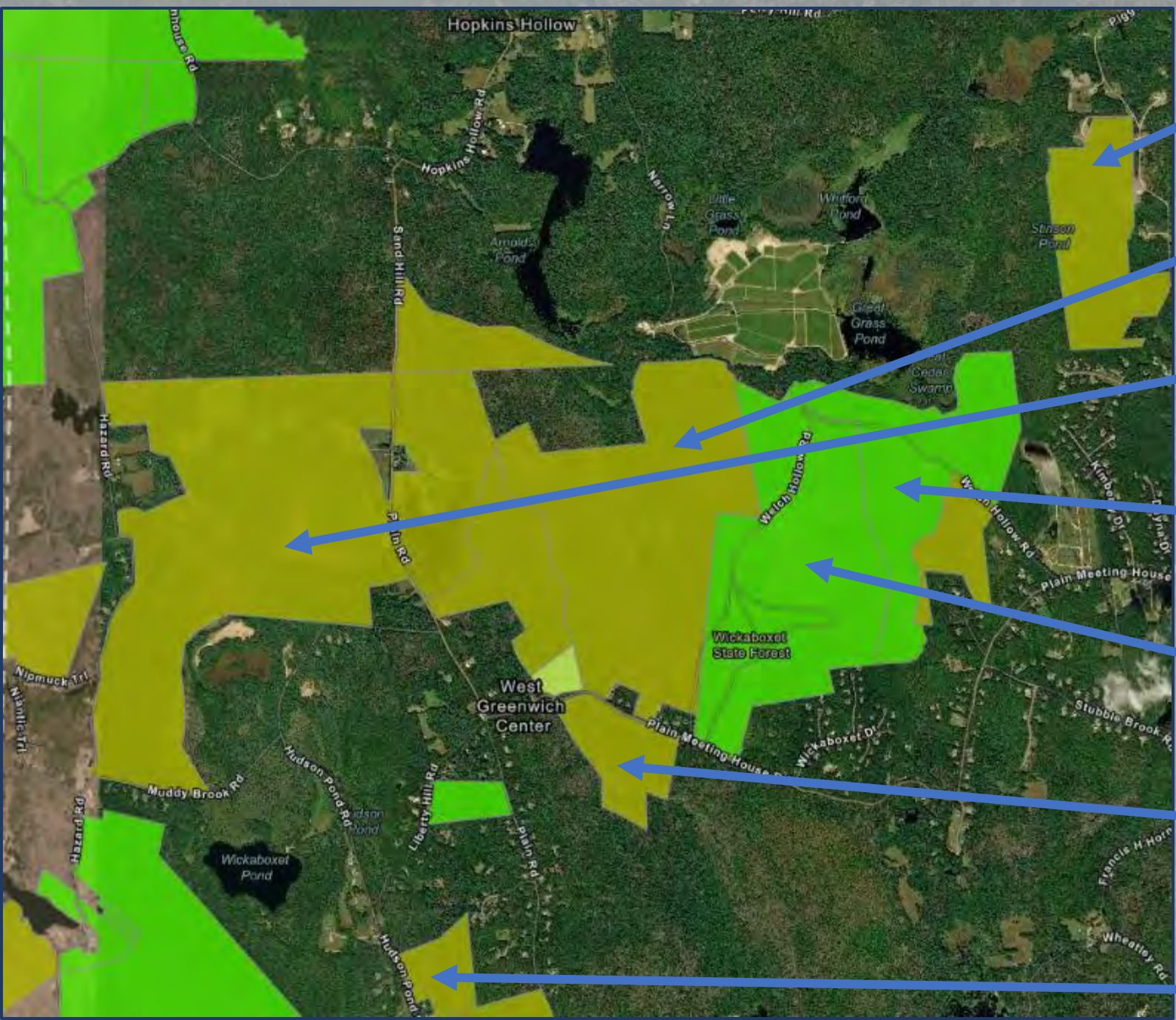
**\$64 MILLION** bond

An aerial photograph of a coastal region, showing a mix of land and water. The land is a mix of green and brown, indicating agricultural or natural land. The water is a deep blue. A semi-transparent blue overlay covers the entire image, with the text placed on top of it.

# Natural and Working Lands

## \$3 million dollars

- Conserve farmland
- Conserve forestland



Legacy – 2005

Legacy – 2008

Cons. Ease. – 2008

Fee Title – 1980

Fee Title – 1950

Legacy – 2011

Cons. Ease. – 2012

An aerial photograph of a coastal region. The left side shows a dense, green forested area with a network of thin roads and paths. The right side is dominated by a large, irregularly shaped body of water in a deep blue color. The text 'Forest Legacy' is centered over the image in a dark blue, serif font.

# Forest Legacy

Congress created in 1990  
to ID and protect critical  
forestland from conversion



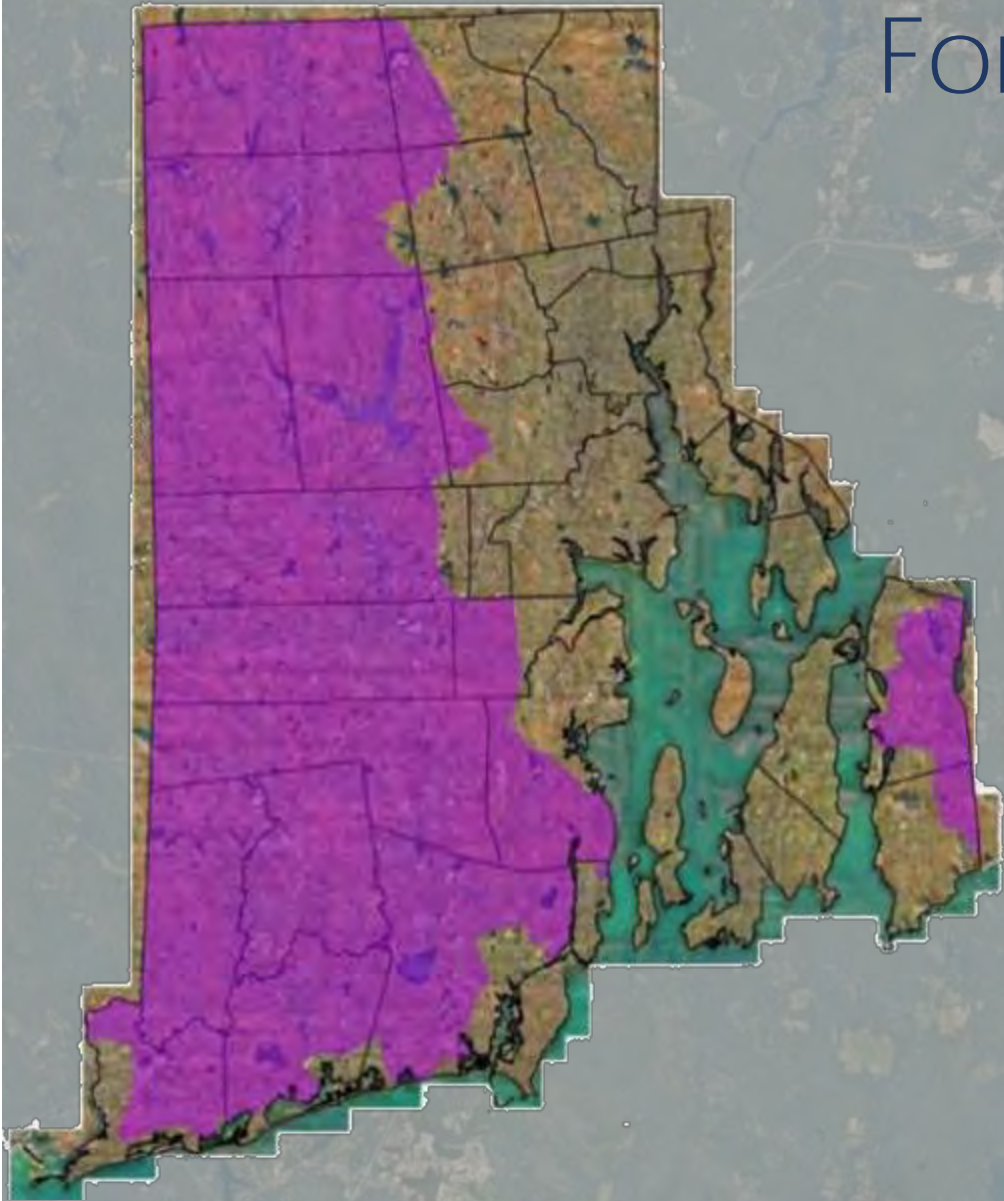
# Forest Legacy Program Area

## Eligibility:

- The forested acreage must be greater than 25 acres
- Compatible non-forest may be included but 75% of the property must be forest.

## Priority:

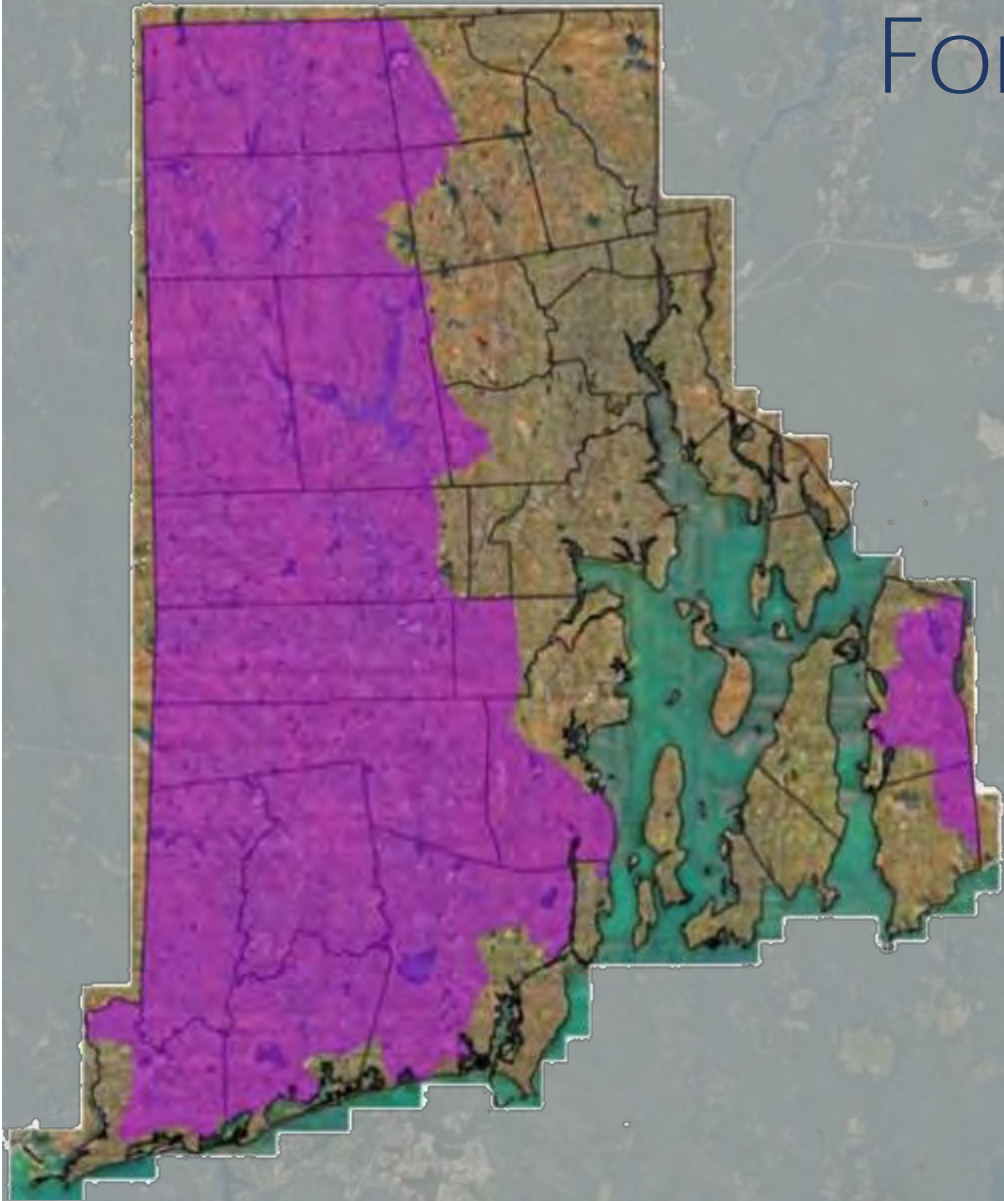
- Land that exhibits exceptional resource values;
- Threatened with conversion;
- Available at below fair market value



# Forest Legacy Program Area

## Key Concepts:

- Focus on land adjacent to existing open space, key water resources
- Remain 'working forests'
- Funding is competitive on a national level
- Conservation easement preferred method (remain in perpetuity)

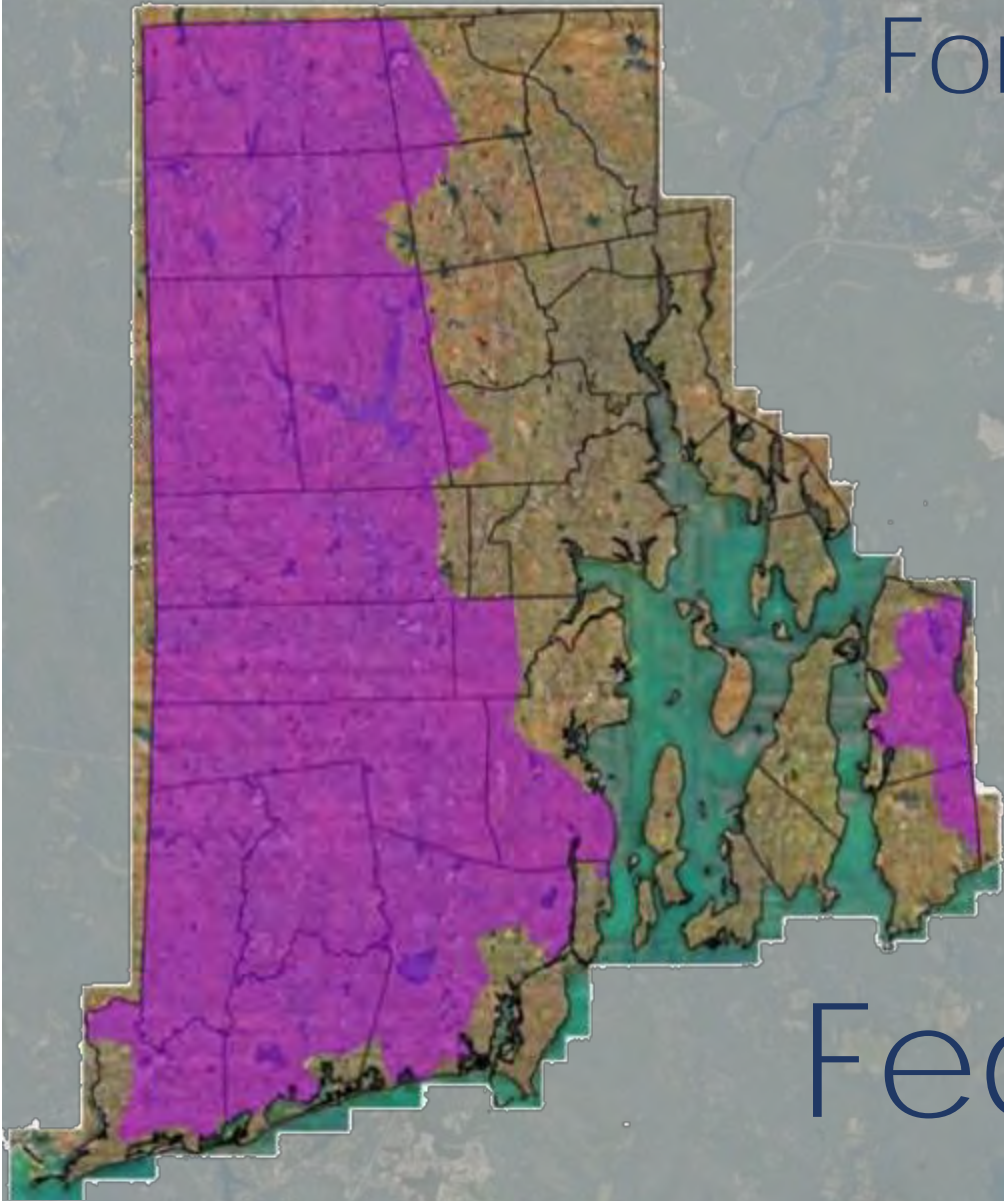


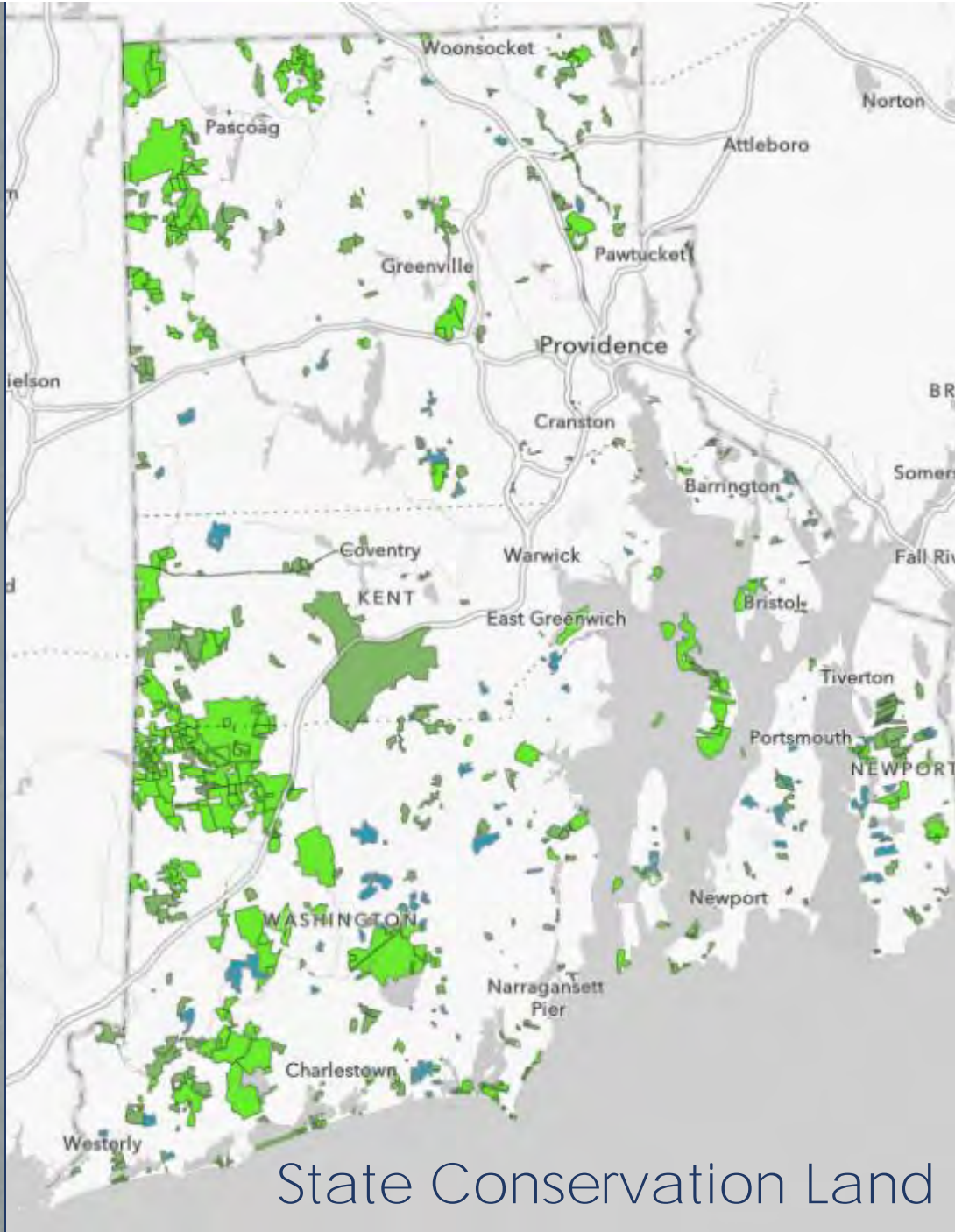


# Forest Legacy Program Area

18 Projects  
2,549 acres

Fed. Fiscal Year 2019  
\$2.9 million



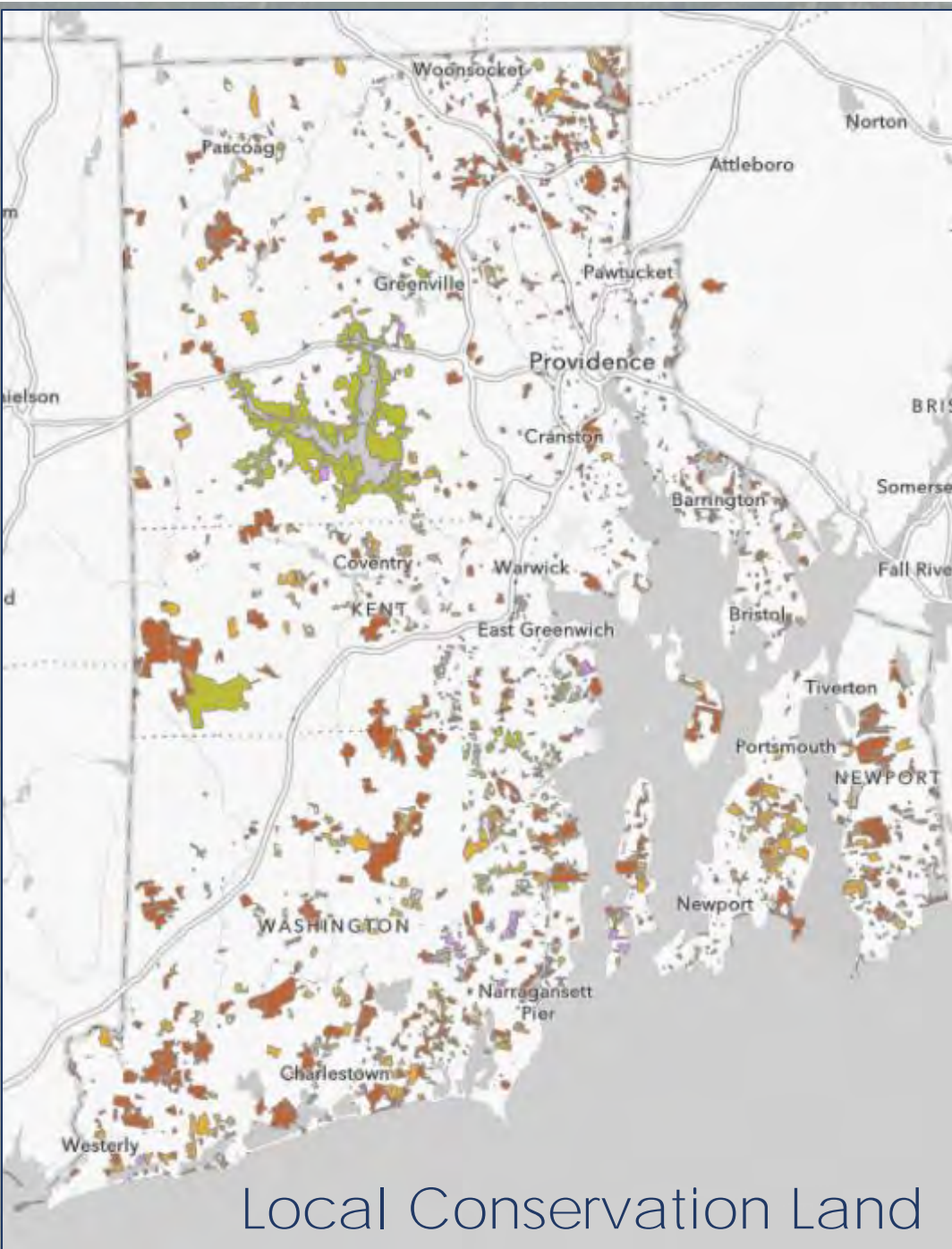


State Conservation Land

952 Projects  
90,341 acres

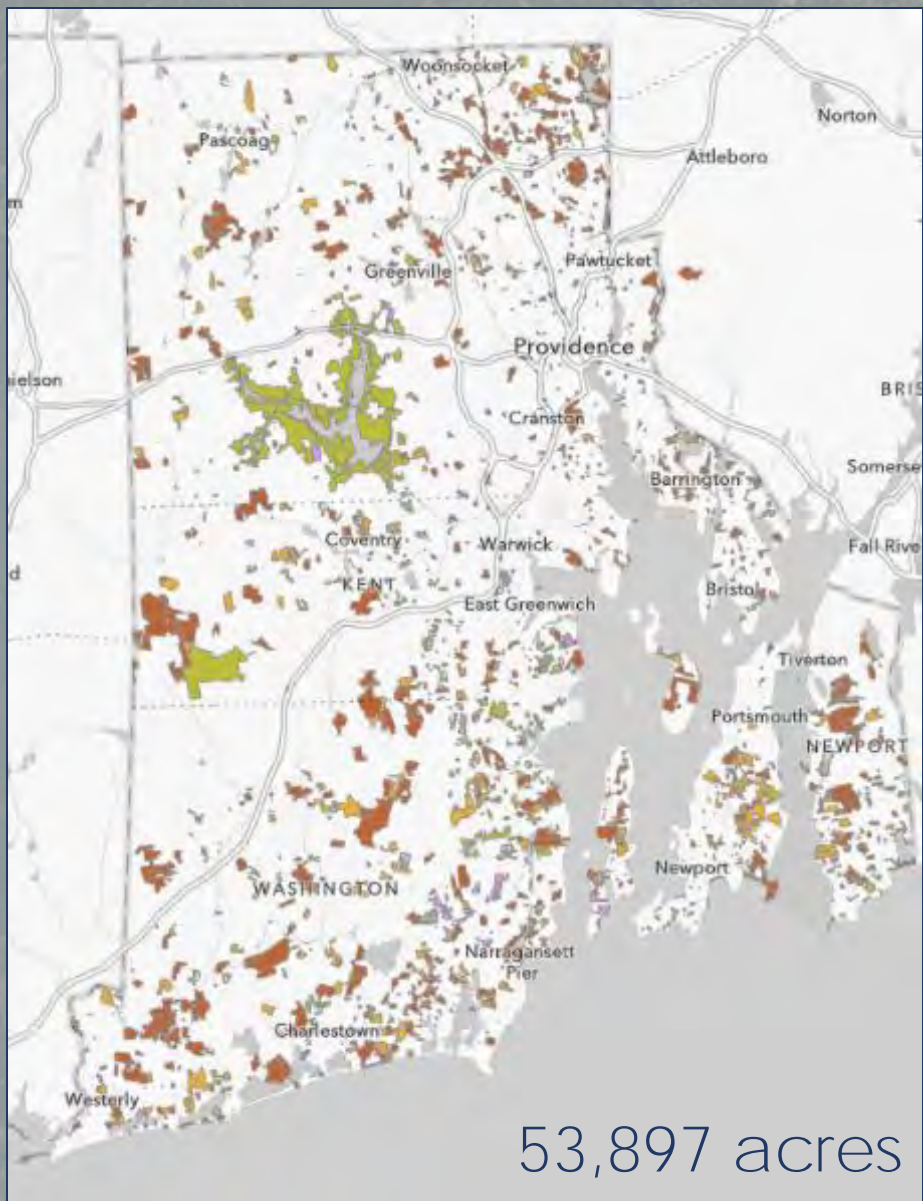
An aerial photograph of a coastal region, showing a mix of land and water. The land is a mix of green and brown, indicating vegetation and possibly agricultural or developed areas. The water is a deep blue. The image is overlaid with a semi-transparent blue filter. The text "Local Conservation Land" is centered in a dark blue, serif font.

# Local Conservation Land



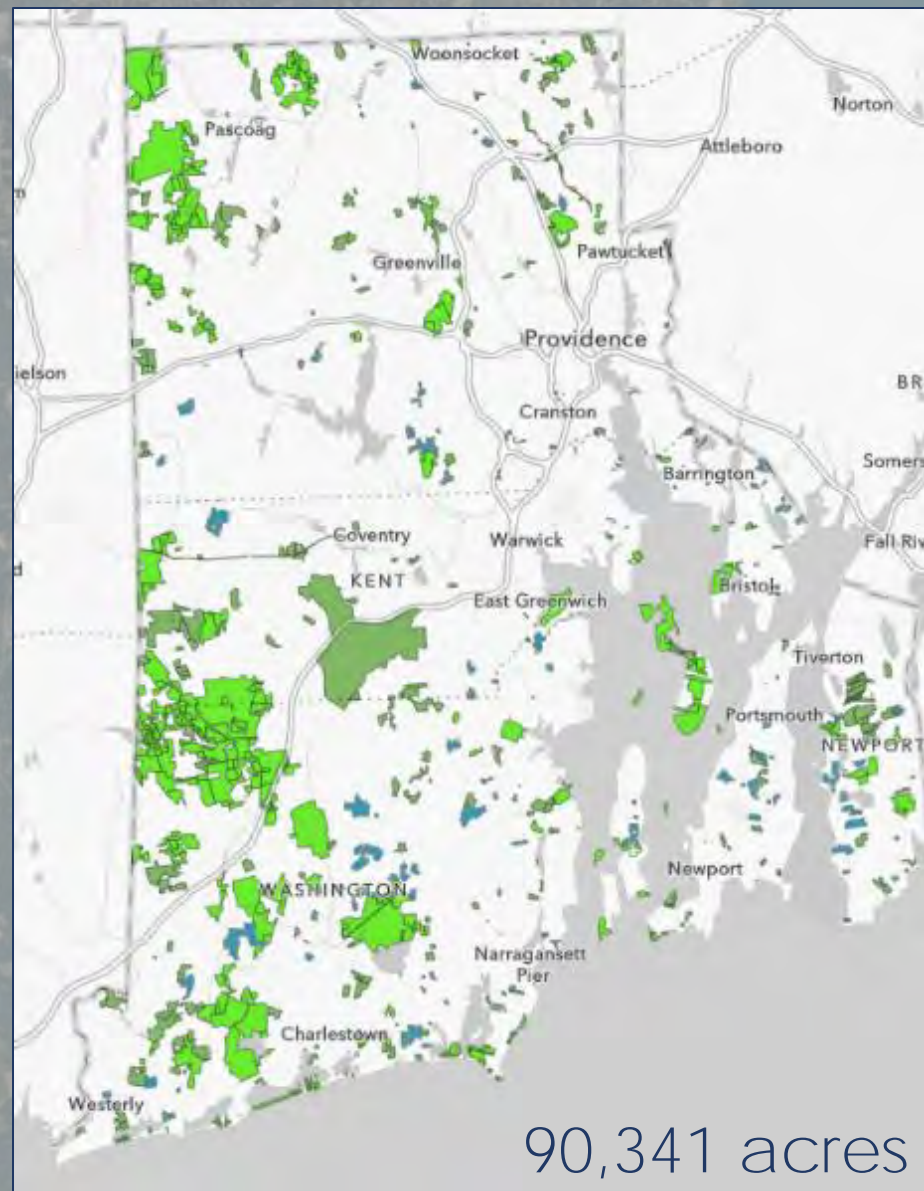
1226 Projects  
53,897 acres

Local Conservation Land



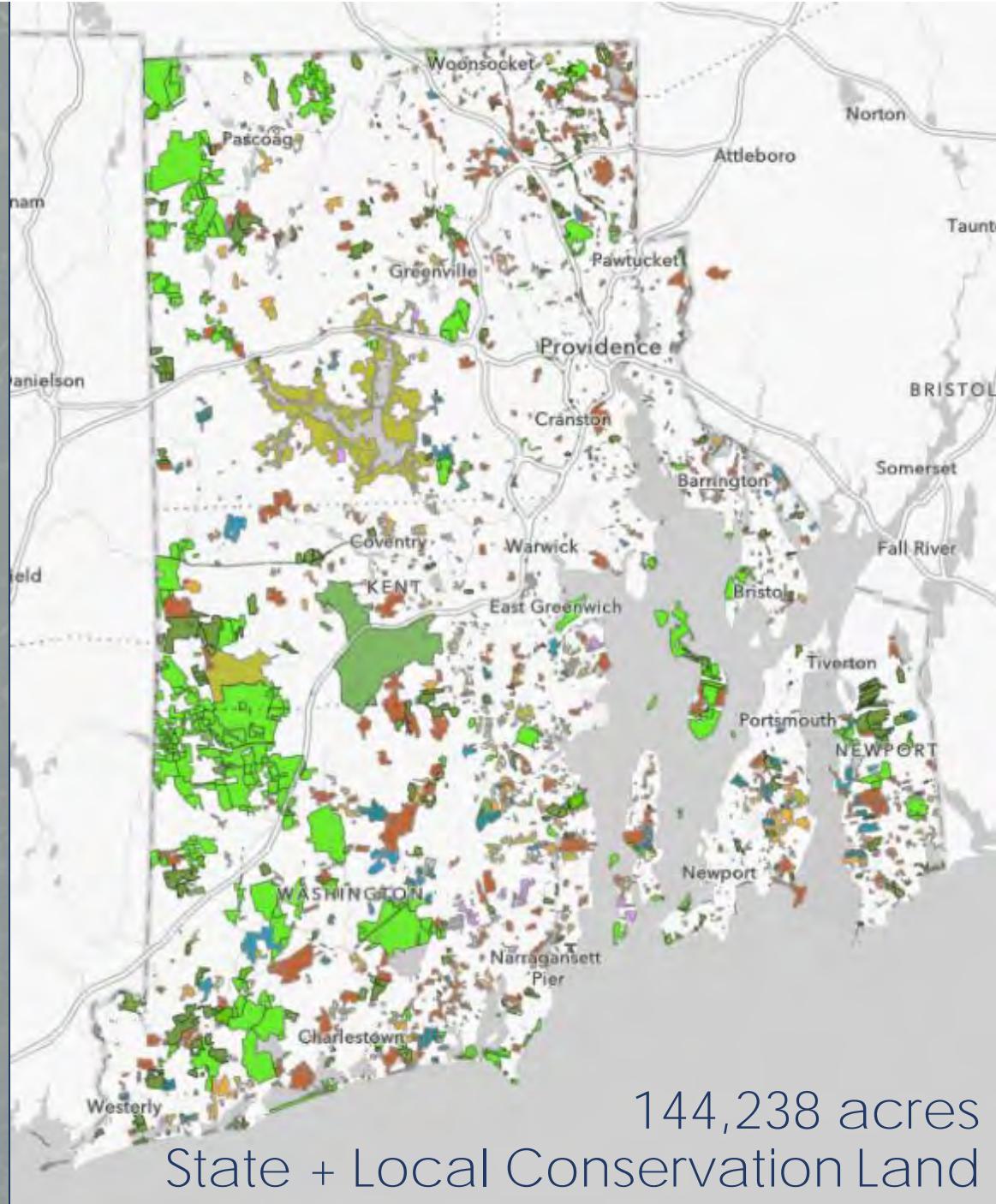
53,897 acres

Local Conservation  
Land



90,341 acres

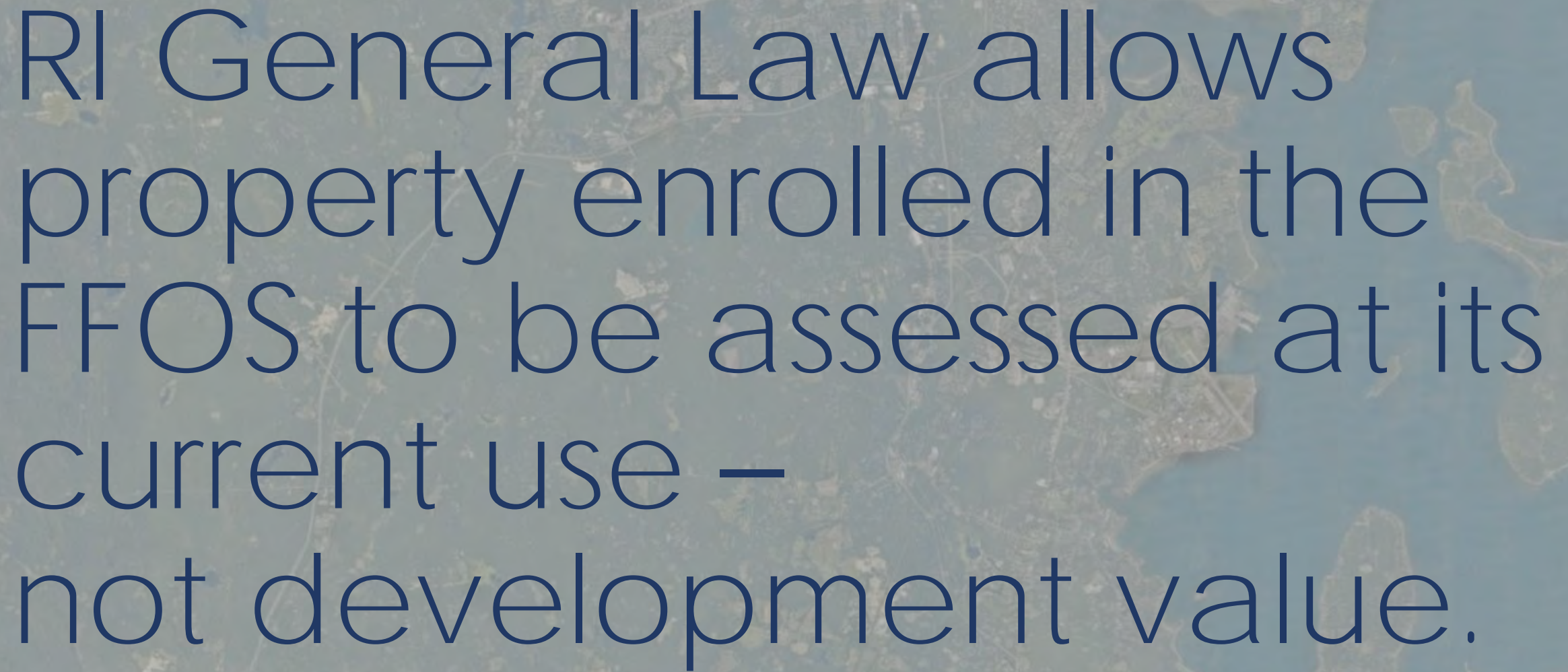
State Conservation  
Land



144,238 acres  
State + Local Conservation Land

An aerial photograph of a coastal landscape, showing a mix of land and water. The land is a mix of green and brown, indicating different types of vegetation and possibly agricultural fields. The water is a deep blue, and there are several small islands or peninsulas. The entire image is overlaid with a semi-transparent blue filter. The text is centered in the middle of the image.

# Farm, Forest, and Open Space

An aerial photograph of a coastal region, showing a mix of blue water, green vegetation, and brownish land. The image is semi-transparent, serving as a background for the text.

RI General Law allows  
property enrolled in the  
FFOS to be assessed at its  
current use –  
not development value.



An aerial photograph of a coastal region, showing a mix of blue water, green vegetation, and brownish land. The text is overlaid on this image.

The purpose of the law is to conserve RI's productive agricultural and forest land by reducing the chance it will have to be sold for development.



RHODE ISLAND DEPARTMENT OF ENVIRONMENTAL MANAGEMENT

## A CITIZEN'S GUIDE TO THE RHODE ISLAND FARM, FOREST, AND OPEN SPACE ACT



# Farmland

# Forestland

# Open Space

# Forestland Classification

570+ Parcels

45,594 Acres



# State Conservation Land

<https://www.arcgis.com/apps/opsdashboard/index.html#/85a4b90da40147e8818cc072a28917cf>

# Forest Legacy

<http://www.dem.ri.gov/programs/forestry/forestlegacy/>

# RI DEM Maps (Local and State Cons.)

<http://ridemgis.maps.arcgis.com/apps/webappviewer/index.html?id=87e104c8adb449eb9f905e5f18020de5>

# Farm, Forest, and Open Space

<http://www.dem.ri.gov/programs/agriculture/ffosa.php>



THANK YOU



“Conservation will ultimately boil down to rewarding the private landowner who conserves the public interest.”

Aldo Leopold

Conservation Economics, *The River of the Mother of God.*