

THIRTEENTH ANNUAL

# LAND & WATER CONSERVATION SUMMIT

*Working together to protect our communities*  
Saturday, March 19, 2016 — URI Memorial Union, Kingston Campus

Photo by Wood

THANK YOU TO OUR LEAD SPONSORS





2016  
RHODE ISLAND  
LAND & WATER  
CONSERVATION  
SUMMIT

## Agenda

- 7:45 – 8:30 **Registration and Continental Breakfast**
- 8:30 – 9:40 **Welcome** — Emcee: Judith Swift, URI Coastal Institute  
**Preserving Place; The Narragansett Salt Pond Preserve** — live interview:  
RI Public Radio Environmental Reporter — Ambar Espinoza  
Filmmaker, Storyteller — Marc Levitt  
Tomaquag Museum Executive Director — Lorén Spears  
**Briefing on General Assembly Environmental Issues**  
Senator Susan Sosnowski — Chair — Environment & Agriculture Committee  
Representative Art Handy — Chair — Environment & Natural Resources Committee
- 9:40 – 10:20 **Business Meetings — Network — Exhibits**  
9:45 – 10:05 Business Meetings (everyone is invited):  
RI Land Trust Council Business Meeting — Atrium I  
RI Association of Conservation Commission Business Meeting — Atrium II B/C  
Watershed Organizations' Meeting — Senate Chambers
- 10:20 – 11:30 **Session I Workshops** – Your choice from 10 offered
- 11:30 – 11:45 Break
- 11:45 – 12:55 **Session II Workshops** – Your choice from 10 offered
- 12:55 – 2:30 **Lunch, Keynote Address & Awards**  
**Governor Gina Raimondo**  
**Keynote – Collin O'Mara** – President - National Wildlife Federation  
**Conservation in this Century; What America Can Learn from the Ocean State**  
Peter Merritt Conservation Award  
Blueways Stewardship Award
- 2:45 – 4:00 **Session III Workshops** – Your choice from 10 offered

# CONSERVATION STEWARDSHIP COLLABORATIVE



## After the Summit Keep the Teamwork Going With Stewardship Resources from the Conservation Stewardship Collaborative

- Online Resource Library—  
templates for baseline docs, manage-  
ment plans, monitoring, signage, more  
[landandwaterpartnership.org/library.php](http://landandwaterpartnership.org/library.php)
- RI Natural History Survey—rare species,  
biodiversity inventory, invasive species  
**David Gregg (dgregg@rinhs.org)**
- RI Land Trust Council—assistance with  
baseline docs., trail maps & blazing, policy  
**Rupert Friday (rfriday@rilandtrusts.org)**

The Conservation Stewardship Collaborative is:



- Youth Conservation League—  
trail building, invasive manage-  
ment, youth engagement.  
**Scott Ruhren (sruhren@asri.org)**
- RI Wildlife Action Plan—  
conservation priorities, planning  
assistance **Amanda Freitas**  
**(amanda.freitas@dem.ri.gov)**



How can the CSC help you  
steward your conservation land?  
Get help, send suggestions:  
**[info@ricsc.org](mailto:info@ricsc.org) or [RICSC.org](http://RICSC.org)**

*Photos: RI Youth Conservation League, Sponsored by RI Conservation Stewardship Collaborative.  
For information on the 2016 YCL, Contact Audubon Society of RI, [sruhren@asri.org](mailto:sruhren@asri.org)*

# Rhode Island Land and Water Partnership

---

Grassroots conservation organizations play a central role in protecting Rhode Island's waterways, open spaces, farms and historic vistas. Rhode Island is fortunate to have over 45 land trusts, a dozen watershed organizations and numerous conservation commissions that rely on the expertise and passion of hundreds of volunteer conservation leaders.

Since 2004, the **RI Land & Water Partnership** has worked to build the capacity and foster connections between these dedicated grassroots organizations. The **RI Land & Water Partnership** is led by Meg Kerr and Rupert Friday in collaboration with many partners from leading conservation organizations.

**The RI Land & Water Partnership** recognizes that each community based conservation organization is unique, comprised of local advocates who understand the issues in their community and cultivate local support for their conservation work.

The Partnership also recognizes that grassroots conservation organizations have much in common - each organization faces similar land and water conservation issues and has similar governance, public relations and other administrative activities.

Through the years, the Partnership has demonstrated that local conservationists can learn and work together to strengthen land and water protection throughout the state.

Each year, the **RI Land & Water Partnership** hosts the Land & Water Conservation Summit in March. The Summit's purpose is to help build the skills and foster connections that local conservation leaders need to be more effective.

The Partnership's web site, [www.landandwaterpartnership.org](http://www.landandwaterpartnership.org), stores a wealth of information from past summits and workshops.

The website is also home to an *on-line library of resource materials* created in collaboration with the *RI Conservation Stewardship Collaborative*. This is a web-based collection of "how to" information to support land and water conservation stewardship.

The library contains land stewardship tools including: information on baseline documentation, easement monitoring, management of invasive species, and habitat restoration strategies; watershed stewardship tools including information on Blueways (water trails) and water quality monitoring; and tools for organizational support.

Please check it out and send us your feedback:  
**Rupert Friday** — [rfriday@rilandtrusts.org](mailto:rfriday@rilandtrusts.org)  
**Meg Kerr** — [megkerr@cox.net](mailto:megkerr@cox.net)

[www.landandwaterpartnership.org](http://www.landandwaterpartnership.org)

RHODE ISLAND  
LAND AND WATER PARTNERSHIP  
*Working together to protect our communities*

# The Coastal Institute at The University of Rhode Island



COASTAL  
INSTITUTE

**Catalyzing**

~

**Leveraging**

~

**Supporting**



CI Senior Fellows: Mill River dam removal and restoration, Taunton, MA; Xploration Awesome Planet with host Philippe Cousteau at Napatree Point, RI.  
Photo Credit: Ayla Fox.

A neutral setting where knowledge is advanced, issues discussed, information synthesized, and solutions developed for the sustainable use and management of coastal ecosystems.

Working in partnership with agencies, NGOs, elected officials, researchers, and the public to promote healthy wetlands, rivers, estuaries and oceans. We are proud to be a sponsor of the Annual Land & Water Conservation Summit.

**Where the land and water meet.**  
<http://web.uri.edu/coastalinstitute/>

# The Land & Water Conservation Summit

---

## *Thirteen years and counting....*

The annual *Land & Water Conservation Summit* is the Land & Water Partnership's flagship event. The Summit has been held yearly since 2004 and is possible because dozens of conservation leaders and experts in organizational development (fundraising, board development, public relations) are willing to spend their Saturday sharing their expertise and latest ideas with their colleagues and friends. The Summit is held in March and is widely acknowledged as Rhode Island's go-to conference for workshops and networking with other grassroots conservation leaders.

## *Where we started*

Rhode Island's land trusts held an annual conference since 1999. In 2004, the RI Land Trust Council invited watershed organizations and conservation commissions to join the conference and created the *RI Land & Water Summit*. The first *Land & Water Summit* was held at the North Kingstown High School. Partner organizations set up displays in the school's atrium. Lunch was served in the school cafeteria. The energy and enthusiasm for this joint conference was terrific.

In 2005, the conference was moved to the URI Memorial Union where it has remained. The Summit has grown into the state's premier conservation event, attracting over 300 conservation leaders from Rhode Island and neighboring New England states for a day of learning and networking.

## *Summit Keynote Speakers*

Each year we recruit a keynote speaker for the Summit who can provide summit participants with timely information and inspiration for continuing our work together.

Roster of keynote speakers and their topics:

- 2004 **Gus Seelig**—*Keys to the 15 year Success of the VT Housing & Conservation Program*
- 2005 **Peter Forbes**—*The Soul of the Land – Nurturing Our Emotional Connections to Our Communities, Landscapes and Watersheds and Telling Stories that Celebrate These Relationships*
- 2006 **Jeff Milder**—*Using Development to Support Conservation – How to Leverage the Real Estate Market to Help Fund Conservation Projects*
- 2007 **Richard Greenwood**—*Powerful Currents – A Historical Perspective on Rivers and the Making of Rhode Island*
- 2008 **Gina McCarthy**—*No Child Left Inside*
- 2009 **Tom Wessells**—*Reading the Forested Landscape – A Natural History of New England*
- 2010 **Tom Horton**—*Saving the Chesapeake Bay's Land and Water – Lessons Learned after 25 years*
- 2011 **Steve Sloan**—*Connecting People to Place and Your Conservation Mission*
- 2012 **Mayor Lisa Wong**—*Urban Conservation as a Redevelopment Strategy*
- 2013 **Steve Archibald**—*Not a storyteller? Perhaps it's time to reconsider!*
- 2014 **Alvaro Sanchez Sanchez**—*Building Strong Green Economies Using Land & Water Conservation Strategies*
- 2015 **Peter Forbes**—*Innovation & Evolution in Conservation*
- 2016 **Collin O'Mara**—*Conservation in This Century; What America Can Learn from the Ocean State*



Your success is our goal.



Loans Partnership Strategy

THE  
CONSERVATION FUND

Learn more at:  
[conservationfund.org](http://conservationfund.org)



# Land & Water Conservation Awards

---



## Peter Merritt Award for Land Conservation

*Awarded by RI Land Trust Council*

The Peter Merritt Award for Land Conservation is given to recognize a volunteer—a dedicated “in the trenches” individual—who is making an outstanding contribution to land conservation in their Rhode Island community.

The Award honors the late Peter Merritt (1943–2000), a founding and dedicated Board member and second president of the Aquidneck Land Trust. Peter worked ceaselessly to establish a vision for land conservation on Aquidneck Island and to marshal the Island’s citizens, municipalities and financial resources toward implementing that vision. He was an eloquent, articulate spokesperson for the need—and the immediacy of the need—for sustainable land conservation. Peter advocated for open space preservation tirelessly. Wherever he was, his enthusiasm and persuasive arguments were a catalyst for action that changed our landscape forever. Peter is described as one part visionary, one part organizer, and one part trench negotiator. Yet, Peter was always the first to give credit and praise to others for the land trust’s accomplishments that he so often led.

***We celebrate Peter’s spirit and enthusiasm with this Award in his honor.***

*Past recipients are: Helen Tjader (Barrington Land Conservation Trust and Neutaconkanut Hill Conservancy, 2015), Garry Plunkett (Tiverton Land Trust, 2014), Sophie Lewis (South Kingstown Land Trust, 2013), Heather Steers (Sakonnet Preservation Association, 2012), Bob Marshall (Prudence Conservancy, 2011), Julie Sharpe (Narrow River Land Trust and other land trusts, 2010), Linda Steere (Narrow River Land Trust, 2009), Karen Saucier (Cumberland Land Trust, 2008), Larry Anderson (Sakonnet Preservation Association, 2007), Charlotte Sornborger (Barrington Land Conservation Trust, 2006), Harvey Perry (The Westerly Land Trust, 2005), Bob Kimarx (Barrington Land Conservation Trust, 2004), Kate Smith (West Bay Land Trust, 2003) and Bob Hawksley (Glocester Land Trust, 2002).*



## Blueways Stewardship Award

*Awarded by the Rhode Island Blueways Alliance*

The mission of the Rhode Island Blueways Alliance is to develop a water trail network linking Rhode Island’s rivers, lakes and ponds to Narragansett Bay and to use the trail to promote safety, conservation, recreation and economic development.

The Blueways Stewardship Award was created in 2010 to recognize an individual who exemplifies dedication to the stewardship and conservation of Rhode Island’s rivers, lakes and coastal waters.

The Blueways Stewardship Award is given to an individual who has the respect of their peers and who has notable accomplishments in watershed management in any of the following areas:

- water quality monitoring and protection,
- development of trails on water,
- promoting land use that protects waterways,
- working to make connections between watershed conservation and their community.

*Past recipients are: Denise Poyer (Wood Pawcatuck Watershed Association, 2015), Judy Colaluca (Save The Lakes, 2014), Caroline Wells (Town of Warren, 2013), Paul Earnshaw (Buckeye Brook Coalition, 2012), Eugenia Marks (Audubon Society of RI, 2011), Frank Matta (Blackstone River Watershed Council/Friends of the Blackstone, 2010).*

# FOOD. ONE OF THE FUNDAMENTAL JOYS.

Newport Restaurant Group and our collection of unique offerings is proud to foster a culture of sustainability. From being a noteworthy local supporter of Rhode Island's farmers and purveyors to championing various open space initiatives like the Aquidneck Island Land Trust, we believe that a thoughtful and responsible approach only enriches a genuine culinary experience.



# Going Greener

## Help us “green” the Summit!

*Everyone is at the Land & Water Conservation Summit to talk about conservation — “talking the talk.”*

*With your help, the Summit is also “walking the walk” — with green practices for this annual event.*

### *What we’re doing:*

- We are giving a **reusable ceramic coffee mug** to everyone who attends the Summit **instead of providing bottled water and disposable coffee cups**. We have washed these mugs so you can use yours for water and coffee during the Summit. This reduces the volume of waste we produce.
- We are partnering with ecoRI who is coordinating the **composting of our waste from lunch**. ecoRI is assisted by our partners at Ronzio’s who are using compostable plates and utensils.
- We are partnering with People’s Power & Light to **offset carbon emissions** from the Summit **with renewable energy**. The electricity for this event has been matched by local, clean power.
- We are reducing the amount of paper used at the Summit by **encouraging on-line registration** and by eliminating the folders previously distributed to each participant.
- We asked Ronzio’s to support local farms by purchasing local fruit and using locally grown greens in the salad for lunch.

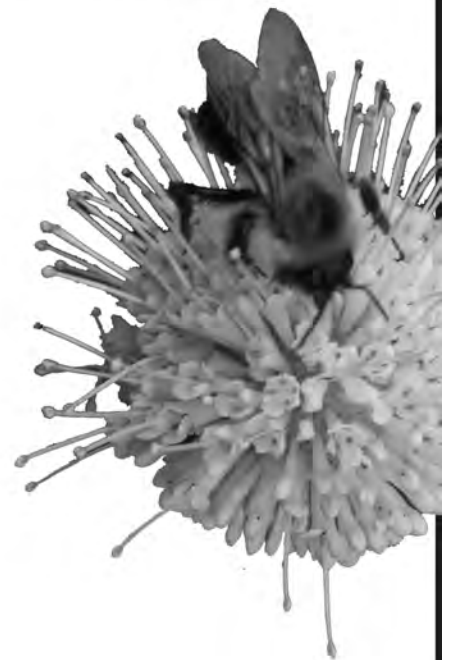




RHODE ISLAND

# Wild Plant SOCIETY

**Early Bloom** | Saturday  
Native Plant Sale | **May 14, 2016**  
9 a.m. to 1:00 p.m.  
URI East Farm, Route 108, South Kingstown RI



**The Best** | Saturday  
Native Plant Sale | **June 4, 2016**  
**in Rhode Island** | 9 a.m. to 1:00 p.m.  
URI East Farm, Route 108, South Kingstown RI

appreciate • protect • study  
our native plants & habitats

**RIWPS.org**





**The Rhode Island Association of Conservation Commissions (RIACC)** is a non-profit, grassroots organization devoted to fostering cooperation and coordination of municipal conservation commissions on a statewide and regional basis.

Realizing that conservation commissions often work in earnest but in isolation, **RIACC** was developed to fill an important niche in Rhode Island's conservation community by creating a means for the state's municipal conservation leaders to join to address common concerns, develop best management practices and collectively address the environmental issues which impact every community.

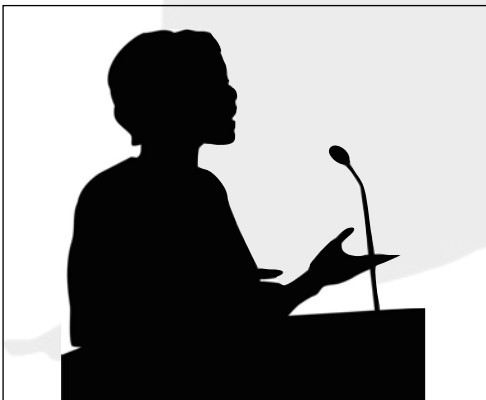
**RIACC** functions as a catalyst, actively and on-site, spurring state and local lawmakers to enact stronger conservation legislation or to reject legislation that would weaken current conservation laws.

Since its inception, **RIACC** has been representing municipal commissions while working with like-minded organizations and public agencies to address a host of environmental issues that directly affect the state's communities and clearly reflect our global situation.

**RIACC** works to educate, empower and network Rhode Island's conservation commissions in their mission to advise and act locally in building sustainable communities through developing environmentally sound land, water and resource policies, and encouraging eco-inspired innovation in technology and development generally.

Our **regional public forums** bring our collective voice to those who want to make Rhode Island a better place to live. The skills learned advance the importance of Conservation Commissions. If you have an idea for a topic, come and pitch it at one of our monthly meetings.

We need your input and guidance to show how we can make our Conservation Commissions better and more productive. Join us at our monthly board meetings, become an active board member and help make all the commissions stronger. **Check out our website** for board meetings time and location, regional public forums and events, and ways to improve your skills for what you do in your town.



More information & events calendar  
[www.riacc-online.org](http://www.riacc-online.org)

RIACC  
PO Box 9221  
Providence, Rhode Island 02940  
(401) 397-4586

*Dan Novak, President*  
*dnovak@uri.edu*  
*Paul A. Roselli, Vice President*  
*proseli@cox.net*  
*Michael Ahnrud, Treasurer*  
*mahnrud@hotmail.com*

# Thank You! These Land Trusts are Supporting the RI Land Trust Council This Year with a Dues-Contribution

Aquidneck Land Trust  
Audubon Society of RI  
Barrington Land Conservation Trust  
Block Island Conservancy  
Block Island Land Trust  
Bristol Land Conservation Trust  
Burrillville Land Trust  
Charlestown Land Trust  
Conanicut Land Trust  
Cumberland Land Trust  
East Greenwich Land Trust  
East Providence Land Conservation Trust  
Foster Land Trust  
Glocester Land Trust  
Hopkinton Land Trust  
Land Conservancy of North Kingstown  
Little Compton Ag. Conservancy Trust  
Mount Tom Land Trust  
Narrow River Land Trust  
Neutaconkanut Hill Conservancy

North Smithfield Land Trust  
Northwest RI Supporters of Open Space  
Prudence Conservancy  
RI Farm Bureau Land Trust  
Richmond Rural Preservation Land Trust  
Sakonnet Preservation Association  
Scituate Land Trust  
Smithfield Land Trust  
South Kingstown Land Trust  
Southside Community Land Trust  
The Nature Conservancy  
Tiverton Land Trust  
Warren Land Conservation Trust  
Warwick Land Trust  
The Watch Hill Conservancy  
Weekapaug Foundation for Conservation  
West Bay Land Trust  
West Greenwich Land Trust  
The Westerly Land Trust

---

## THE WEST GREENWICH LAND TRUST AND CONSERVATION COMMISSION

*are happy to support the Land & Water Conservation Summit!*

— 2016 —



**MISSION:** *The Rhode Island Land Trust Council promotes land conservation in Rhode Island by supporting the missions and operations of land trusts, fostering collaboration and advocating for sound land conservation policy.*

The Rhode Island Land Trust Council is a coalition of the state's land trusts — over 45 community-based organizations formed to protect the special places and land...the open spaces...that define the character of our state. Land trusts are preserving the places we love so that they can be enjoyed by future generations.

Rhode Island's land trusts are grass roots organizations that reflect the uniqueness and priorities of our communities. Only eleven Rhode Island land trusts have staff, the others are entirely volunteer organizations. Many Rhode Islanders volunteer thousands of hours protecting and stewarding our communities' most valued open space lands.

**The RI Land Trust Council—**

- Advocates for state legislation and funding to support land conservation and land trusts
- Fosters collaboration and the exchange of ideas among land trusts
- Helps land trusts improve their ability to protect and steward land

**Key Initiatives—**

- **Advocacy of state bond funding for land conservation and legislation**—to help land trusts defend protected lands.
- **Land Trust Days**—to increase the visibility of land trusts and the special places we are protecting. In August and September, join land trusts around the state by sponsoring a guided walk or other activity. Don't be left out. Contact the Council for information.
- **Land Trust Trails on ExploreRI.org**—so it is easier for people to find a trail and take a walk on protected lands—(ExploreRI is a partnership with RI Blueways Alliance).
- **SWAT Stewardship Teams**—skilled volunteers helping land trusts to map and to blaze their trails. Contact the Council to get help with these stewardship tasks or join a SWAT team.
- **Land Trust Excellence Initiative**—Current projects are helping land trusts prepare baseline documents and organize records for protected lands. Contact the Council if you need help with these tasks. (These projects are in partnership with the Land Trust Alliance.)
- **Land & Water Conservation Summit** and periodic **workshops** (organized with partners)—the best opportunities in Rhode Island to learn the latest information and “how to” best practices for protecting and stewarding land.

**Thanks to Our Supporters—**

The Council's work is possible because of generous funding from land trusts (our members), foundations, individuals, our board members, and other organizations. Major supporters in 2015 included:

- |  |  |
|--|--|
| Land Trusts (Dues-contributing members, page 12) | Norcross Wildlife Foundation                       |
| RI Land Trust Council Board Members              | Prince Charitable Trusts                           |
| Anonymous contribution                           | RI Dept. of Environmental Management Trail Grant   |
| Arthur H. Carr Fund & Mrs. Dudley A. Williams    | The Rhode Island Foundation                        |
| Bafflin Foundation                               | Sharpe Family Foundation/Julie & Henry Sharpe, III |
| Conservation Stewardship Collaborative           | van Beuren Charitable Foundation                   |
| Endowment @ The RI Foundation                    | Ken & Dottie Woodcock                              |
| Donald McCluskey                                 | Worldways Social Marketing                         |
| Hazard Family Foundation                         |  |

**Thank You!**

**For information on how you can support the RI Land Trust Council's efforts, contact Rupert Friday—401-932-4667—[rfriday@RILandtrusts.org](mailto:rfriday@RILandtrusts.org)—[www.rilandtrusts.org](http://www.rilandtrusts.org)**

# Thank you for protecting Rhode Island's land and water.

We're proud to support innovative partnerships like the **Conservation Stewardship Collaborative**, projects like the **Shoreline Special Area Management Plan** and the coalitions that are tackling critical issues like **storm water management and public transit issues**



RHODE ISLAND  
FOUNDATION

————— 1916 - 2016 —————

[rifoundation.org](http://rifoundation.org)





# Saving Land & Water for Over 100 Years



**Audubon Society of Rhode Island • [www.asri.org](http://www.asri.org)**

The Audubon Society of Rhode Island is an independent not-for-profit environmental organization dedicated to protecting birds, wildlife, and their habitats through environmental education, advocacy, and land conservation. The state's first environmental organization, Audubon now protects nearly 9,500 acres in a network of refuges, pristine properties and wildlife habitats.



**GrowSmartRI**  
Sustainable Economic Growth  
& Quality of Place

**2016  
Power of Place  
Summit**

Tuesday, June 21

Help us showcase and celebrate individuals, projects, and plans that are moving our state's economy forward and conserving our land and water resources

More information at:  
[www.GrowSmartRI.org](http://www.GrowSmartRI.org)



**B.G.Hooke Consulting**

- Website design and development
- Web-integrated maps
- Mapping and GIS data analysis

**Bruce G. Hooke** • email: [bhooke@bghookeconsulting.com](mailto:bhooke@bghookeconsulting.com)  
website: [www.bghookeconsulting.com](http://www.bghookeconsulting.com) • ph: 401-421-3634



PRINT & DIGITAL

GRAPHIC DESIGN • PHOTOGRAPHY • WEBSITE  
ILLUSTRATION • SIGNAGE • LOGO • DISPLAY

*brianjonesdesign.com*



**MARC LEVITT**

**Filmmaker**

**Radio Host—Producer**

**Writer—Storyteller—Educator**

Facebook:

***Woven in Time; The Narragansett Salt Pond Preserve***

Coming soon:

***Triple Decker; A Love Story***

Marc Levitt is available for school, clubs and library visits.

**WWW.MARCLEVITT.ORG**

**Rhode Island's ONLY  
Indigenous Museum!**



**We Offer:**

- GUIDED TOURS
- OFFSITE LECTURES
- GROUP BOOKINGS YEAR ROUND
- INDIGENOUS LIFEWAYS PODCAST

**401-491-9063**

**WWW.TOMAQUAGMUSEUM.ORG**

## Keynote:

---

### *Conservation in this Century; What America Can Learn from the Ocean State*

The threats to America's natural resources, ranging from imperiled wildlife and degraded water to unhealthy air and climate-induced storms have never been greater. Yet, in Rhode Island and in communities across our nation, successes that are replicable and scalable highlight the potential paths forward. In his talk, O'Mara will speak about these pressing challenges and show how recent victories in Rhode Island that married grassroots activism with forward thinking public policy offer models for action in every state in the country.



*Collin O'Mara — President, National Wildlife Federation*

Collin O'Mara is President of the National Wildlife Federation, America's largest wildlife conservation organization. Under his leadership, the Federation focuses on: conserving wildlife from bighorn sheep to pollinators like monarch butterflies and native bees, defending public lands and access to outdoor recreation, restoring America's waterbodies, improving habitat resilience, advancing environmental education, and connecting every American child with the great outdoors. Previously, as Secretary of Delaware's Department of National Resources & Environmental Control, Collin led the state's efforts to expand outdoor recreation and environmental education opportunities, and enhance the state's resilience to climate impacts.

## Opening Session:

---

### *Preserving Place; The Narragansett Salt Pond Preserve — live interview*



**Ambar Espinoza** has been the environmental reporter at Rhode Island Public Radio in Providence since December 2013. She has extensive experience in public radio, working for Minnesota Public Radio, National Public Radio, and APM's *Marketplace*, in various capacities: reporter, producer, researcher, production and editorial assistant, freelancer, and intern. Ambar's interest in environmental journalism started in Rhode Island a few years ago as an environmental reporting fellow at the Metcalf Institute for Marine & Environmental Reporting. Ambar was born in El Salvador and raised in Los Angeles, CA. She has a master's degree in science education from the University of Washington-Seattle and a bachelor's degree in political science from American University in Washington, D.C.

[www.ripr.org](http://www.ripr.org)



**Marc Levitt** is a filmmaker, radio host, writer and storyteller. Mr. Levitt, a Cornell University graduate, is the Director/Producer of two films: *Stories in Stone*, a film about the Narragansett Indian masonry tradition and *Woven in Time; The Narragansett Salt Pond Preserve*, about the recently preserved pre-contact Narragansett village. He is currently at work on a new film, *Triple Decker, A Love Story*. For 18 years, Marc Levitt hosted and produced a national radio show, *Action Speaks, Underappreciated Dates that Changed America*, heard on over 200 radio stations, and has traveled to over 60 countries as a storyteller/educational consultant. He is the author of the Corwin Press book on writing *Putting Everyday Life on the Page*.

[www.MarcLevitt.org](http://www.MarcLevitt.org)



**Lorén M. Spears**, Narragansett, Executive Director of Tomaquag Museum, has been an educator for over 25 years from K-8 and more recently as an adjunct professor at the University of Rhode Island where she also received her undergraduate degree in Elementary Education. Mrs. Spears holds a Master's in Education from the University of New England. She shares her cultural knowledge and traditional arts learned through her family with the public through museum tours, classes, lectures, workshops, educator conferences and other programs. She works tirelessly to empower Native youth and to educate the public on Native history, culture, the environment and arts. She was appointed by Governor Gina Raimondo to serve on the Board of the RI State Council on the Arts and serves on various other boards. She develops strong partnerships with community organizations to fulfill the educational mission of Tomaquag Museum. She resides in Charlestown, with her husband Robin and 3 children, all of whom are traditional artists.

[www.tomaquagmuseum.org](http://www.tomaquagmuseum.org)

**Thank You to these Sponsors  
of the 2016 Land & Water Conservation Summit!**

---

**Conservationists (\$2,500 and above)**

**HAZARD  
FAMILY  
FOUNDATION**

**Bank of America**



---

**Steward (\$1,000 - \$2,499)**



**CONSERVATION  
STEWARDSHIP  
COLLABORATIVE**

---

**Supporter (\$750 - \$999)**

*The Conservation Fund  
Newport Restaurant Group*

---

**Friend (\$500 - \$749)**

*Rhode Island Chapter of the American Society of Landscape Architects  
Rhode Island Sea Grant  
Rhode Island Wild Plant Society  
Narragansett Bay Research Reserve – Coastal Training Program  
The Nature Conservancy*

# Workshops at a Glance

	<b>Session 1</b> 10:20 – 11:30 am Descriptions — page 21–25	<b>Session 2</b> 11:45 am – 12:55 pm Descriptions — page 25–29	<b>Session 3</b> 2:45 – 4:00 pm Descriptions — page 29–33
<b>A</b>	Conservation ADHD  <b>ROOM — 301</b>	Implementing the NEW Regulations for the Statewide Freshwater Wetlands Program <b>ROOM — ATRIUM II B/C</b>	Comprehensive Plans Revisited—Using Comprehensive Plans for Conservation and Management <b>ROOM — ATRIUM I</b>
<b>B</b>	The Intersection of Landscape Planning Necessity and Aesthetic Beauty <b>ROOM — ATRIUM I</b>	The Future of Conservation Commissions in RI: the Argument for Regulatory Authority <b>ROOM — 360</b>	Free Has a Cost – Being Your Own “Tree Activist” <b>ROOM — 354</b>
<b>C</b>	Environmental Education and Environmental Organizations – They’re a Good Fit! <b>ROOM — QUINN 103</b>	Telling Stories 2.0. Creating a New Vision <b>ROOM — QUINN 103</b>	Strength in Diversity: the Importance of Developing Urban Conservation <b>ROOM — ATRIUM II A</b>
<b>D</b>	Strategic Framing for Climate Change Communication <b>ROOM — 318</b>	Enhancing Coastal Resilience with Green Infrastructure <b>ROOM — ATRIUM I</b>	Reinventing Urban Landscapes with Green Infrastructure <b>ROOM — 314</b>
<b>E</b>	Land Conservation 101  <b>ROOM — 308</b>	Revising the Land Trust Standards and Practices <b>ROOM — 308</b>	Resources Available for Stewardship <b>ROOM — ATRIUM 2 BC</b>
<b>F</b>	Municipal Land Trust Roundtable Discussion <b>ROOM — SENATE CHAMBERS</b>	Starting and Running a Community Garden <b>ROOM — 314</b>	Managing Your Land for both Forest and Wildlife Values <b>ROOM — 308</b>
<b>G</b>	Because “Saving Acres” Isn’t Enough...  <b>ROOM — ATRIUM II B/C</b>	Planting Rhode Island’s Native Species for the Future <b>ROOM — 318</b>	Thinking Outside the Box: Can We Create Amphibian Habitat as We Manage Stormwater? <b>ROOM — QUINN 103</b>
<b>H</b>	How to Create Community Stewardship for Urban Watersheds <b>ROOM — 360</b>	Tried and True Tips for Successful Fundraising <b>ROOM — ATRIUM 2A</b>	Understanding the Complexities of Renewable Energy in RI <b>ROOM — SENATE CHAMBERS</b>
<b>I</b>	The Traditional Media Are Here to Stay  <b>ROOM — QUINN 104</b>	Use Social Media to Talk Directly – and Successfully – to Your Audiences <b>ROOM — QUINN 104</b>	Strategies for Keeping and Growing Your Audience  <b>ROOM — 318</b>
<b>J</b>	Board Building: Practical Stuff from the Trenches <b>ROOM — ATRIUM II A</b>	Engage, Motivate, And Get Out of the Way! <b>ROOM — SENATE CHAMBERS</b>	Using Online Information to Make Maps <b>ROOM — 360</b>

# The Land Trust Alliance is proud to support Rhode Island land trusts



## It doesn't end here ... Keep learning after the conference!

### [www.lta.org/webinars](http://www.lta.org/webinars)

No matter where you are, take a webinar to access the latest information from conservation experts.

### <http://learningcenter.lta.org>

Online Learning Center\* with

- A digital library with articles, collections and *Saving Land* magazine.
- Forums where our conservation experts answer your questions daily and you can contribute your ideas.

### [www.lta.org/publications](http://www.lta.org/publications)

Expand your library with the Alliance's *Standards and Practices Curriculum* – available in book or downloadable formats.

### [www.alliancerally.org](http://www.alliancerally.org)

**Rally 2016: The National Land Conservation Conference**  
**Oct. 28–30, Minneapolis, MN**

A unique opportunity where 2,000 conservation leaders gather to teach, learn and inspire each other.

\* The Learning Center is a service offered to Alliance member land trusts, partners and individual members at the \$250 level and above.

# Workshops – Session I 10:20 – 11:30 *choose from 10*

---

## 1-A Conservation ADHD

*Paul Roselli - Burrillville Land Trust & RI Land Trust Council (Moderator) proselli@cox.net*

*Nancy Letendre, Esq. AICP - Mason & Associates Inc. nancyletendreesq@gmail.com*

*Wenley Ferguson - Save the Bay wferguson@savebay.org*

*Brian Blais - Bryant University bblais@bryant.edu*

Got a burning environmental, climate change or conservation question? Or you always wanted to present at the summit but didn't have enough material for a 70 minute presentation? This workshop is designed for you.

Attendees bring their burning question or short presentation to this workshop. Panel members answer questions from the audience and may ask a member from the audience to talk about what they know. Maximum time for each topic is 10 minutes. BYOQ - Bring Your Own Question! BYOT - Bring Your Own Topic!

## 1-B The Intersection of Landscape Planning Necessity and Aesthetic Beauty

*Kelly Addy - University of Rhode Island kaddy@uri.edu*

*Rick Enser - Consultant & RI Natural History Survey & Narrow River Land Trust rickenser@gmail.com*

Land use management programs often require a holistic view that includes an assessment of biodiversity - the ecosystems and unique species present. Conservation organizations can be the change agents for enhancing habitat, re-introducing native or rare species and building climate change resiliency into forest systems. Learn how research on our native beaver population can help change the way we think about our current land use management practices, and the ways that biodiversity assessments of properties can inform the selection of conservation actions.

## 1-C Environmental Education and Environmental Organizations – They're a Good Fit!

*Denise Poyer - Wood-Pawcatuck Watershed Association, Moderator denisepoyer@gmail.com*

*Kimberly Sullivan - RI Department of Environmental Management kim.sullivan@dem.ri.gov*

*Kassi Archambault - Woonasquatucket River Watershed Council karchambault@wrwc.org*

*Shareen Knowlton - Roger Williams Park Zoo sknowlton@rupzoo.org*

*Rachel Holbert - Norman Bird Sanctuary RHolbert@normanbirdsanctuary.org*

*Stacey Jackson - Westerly Land Trust education@westerlylandtrust.org*

*Jeannine Silversmith - RI Environmental Education Association jeaninesilversmith@gmail.com*

Is your land trust or watershed council thinking about offering education programs? This workshop will explore some of the ways environmental organizations are working with local schools, after school programs, and communities to bring more kids into the outdoors. Panelist from the RI Environmental Education Alliance will explain the No Child Left Inside Act and RI's Environmental Literacy Plan to see how they could help encourage teachers to use local places as outdoor classrooms.

## 1-D Strategic Framing for Climate Change Communication

*Jennifer West - Narragansett Bay National Estuarine Research Reserve jennifer@nbnerr.org*

This interactive session will introduce a research-based approach to telling a story about climate change that helps engage audiences in positive ways, by overcoming traditional barriers and cuing people to think productively about solutions. Participants will learn some framing tools and practice applying techniques. The information presented in the session is based on the National Network for Ocean and Climate Change Interpretation (NNOCCI) project, funded by the National Science Foundation.

**SAVE THE BAY®**

NARRAGANSETT BAY

Proudly supporting  
the 2016 Rhode Island  
Land & Water Conservation Summit



Protect and improve Narragansett Bay. That's our mission. The Bay has come a long way since 1970, but there's still work to be done. Save The Bay envisions a fully swimmable, fishable and healthy Narragansett Bay, accessible to all and globally recognized as the natural treasure it is.

[savebay.org](http://savebay.org)



# Workshops – Session I 10:20 – 11:30 *continued*

---

## 1-E Land Conservation 101

*Chuck Allott - Aquidneck Land Trust callott@ailt.org*

This will be a soup to nuts workshop on protecting land including both fee and conservation easement transactions. We'll use case studies to dissect a typical land conservation project starting with how a land conservation project begins and how to talk with a landowner. We'll go through the steps and discuss what needs to be done until the project is completed and the property is protected.

## 1-F Municipal Land Trust Roundtable Discussion

*Marilyn Grant - Hopkinton Land Trust magrant2@verizon.net*

*Barbara Rich - Smithfield Land Trust brich@barbararich.net*

How do you deal with Rhode Island's open meeting law and negotiate land conservation deals? How do you recruit and work with volunteers? What are the advantages of forming and working with a "Friends" group? How do you maintain good relations with the Town Council? How do you manage finances? What is the best way to contract with consultants? These are just some of the issues that municipal land trusts face that are different from independent non-profit organizations. Join this discussion with your peers from municipal land trusts. Ask your questions and share your land trust's strategies for success. The discussion will be facilitated by Barbara and Marilyn who chair the municipal land trusts in their towns.

## 1-G Because 'Saving Acres' Isn't Enough...

*Carol Lynn Trocki - Consultant & RI Land Trust Council cltrocki@gmail.com*

We know how the IRS defines 'conservation values', but how do we? Why do we do this work? What is it we value about conservation, exactly? Are the reasons now the same as they were when we started? Is it the opportunity to take a hike in the woods? A beautiful water view? Access to safe, healthy, local food? Clean drinking water? Or maybe (my personal favorites...) the magic of dark night skies and fireflies? Those of us already engaged in this work often know and care deeply about all of these things, but perhaps one barrier to engaging others is making sure we describe what we do in ways that are relevant and accessible to a broader audience. This workshop will be an opportunity to participate in a conversation about the value of conservation in your community and to exchange ideas and examples that can help all of us expand our thinking about the meaning of our work.

## 1-H How to Create Community Stewardship for Urban Watersheds

*Holly Ewald - UPP Arts holly@upparts.org*

*Amelia Rose - Groundwork Providence arose@groundworkprovidence.org*

Most of Rhode Island's population lives in urban areas. This workshop will highlight how two Providence based grassroots organizations are drawing attention to and protecting the wonderful, essential wild, natural places in our cities using the arts, education, demonstration projects, and natural resource workforce development for both urban youth and adult residents. The workshop will provide a forum for sharing your success stories and will help strengthen urban engagement statewide.

## 1-I The Traditional Media Are Here to Stay

*Chip Young - Communications consultant & ecoRI News csyenv@gmail.com*

*Rick Schwartz - StraightTalk consulting Rick@SchwartzTalk.com*

In these days of social media, organizations might be fooled into thinking they need not bother working with the mass media: newspapers and radio and TV stations. Yet, these outlets reach much bigger audiences and confer a legitimacy on you that no other medium can. This workshop will cover: 5 ways the traditional media have changed and what that means to our approach to them; presenting your "brand" to the media (and everyone else); and developing your very own "matrix" for working with the media. The presenters have 80 years of communications background between them and will focus on your questions for half of the workshop.



# RHODE ISLAND SEA GRANT

is pleased to support the

## Thirteenth Annual Land and Water Conservation Summit

Rhode Island Sea Grant works in the state, the region, and beyond to discover answers to issues affecting coastal resources and the people who depend on them through research, outreach, education, and legal programs.

To learn more about our programs, to see if your organization could benefit from a **Law Fellow**, or to subscribe to our free magazine, **41°N**, produced in partnership with the Coastal Institute at the University of Rhode Island, please visit our website: [seagrant.gso.uri.edu](http://seagrant.gso.uri.edu).

*Rhode Island Sea Grant is based at the URI Graduate School of Oceanography.*



The Nature Conservancy 

Protecting nature. Preserving life.

*the promise of nature*

[nature.org/rhodeisland](http://nature.org/rhodeisland)

## Workshops – Session I 10:20 – 11:30 *continued*

---

### 1-J Board Building: Practical Stuff from the Trenches

*Ashley Belanger - Rhode Island Urban Debate League ashley@riudl.org*

Boards, like unicorns, can be both miraculous and terrifying. After all, an effective Board could be the difference between realizing your organizational dreams...and living your non-profit nightmare. Don't sell your awesome org. short! Learn how to find great people for your Board and set them up for success. Through this workshop, participants will: learn the basic don'ts and dos of building a dream board; receive some solid tools to use on the journey; brainstorm solutions to their greatest board challenge; and laugh ('cause that's important).

## Workshops – Session II 11:45 – 12:55 *choose from 10*

### 2-A Implementing the NEW Regulations for the Statewide Freshwater Wetlands Program

*Chuck Horbert - RI Department of Environmental Management Chuck.Horbert@dem.ri.gov*

In 2015, Rhode Island's General Assembly passed legislation that changed setbacks and authority for Rhode Island's freshwater wetlands program. This workshop will review the findings of a study commission established to examine wetlands regulation and the key components of the regulations that will implement these changes.

### 2-B The Future of Conservation Commissions in Rhode Island: the Argument for Regulatory Authority

*Tom Sullivan - Princeton Land Trust & former MA Conservation Commission member toms@eig-llc.com*

*Michael Rice - University of Rhode Island & former member RI General Assembly &*

*South Kingstown Conservation Commission mrice@uri.edu*

*Members - Rhode Island Association of Conservation Commissions*

What would the future of Conservation Commissions look like in Rhode Island if they were given regulatory authority during the permitting process? Presenters lead a discussion as to what exists now, how regulations are enacted and how some municipal governments are currently using Conservation Commissions. Presenters offer advice on what RI Conservation Commissions would look like once statewide authority is in place and how the life of a commissioner would change.

### 2-C Telling stories 2.0. Creating a New Vision

*Dan Novak - U. of Rhode Island & RI Association of Conservation Commissions dnovak@uri.edu*

*Rebekah Greenwald Speck - Riverzedge Arts bekah@RIVERZEDGEARTS.ORG*

*Students - Riverzedge Green Design Lab*

Storytelling that involves conservation as an integral and necessary part of our culture is essential to the work of environmentalists and conservation organizations. We need a new and profoundly positive horizon of understanding and a comprehensive narrative that renews our hopefulness and sense of inspiration. This workshop includes presentations from a philosophical perspective and those from teenagers that integrate their sense of place in the art that they produce.

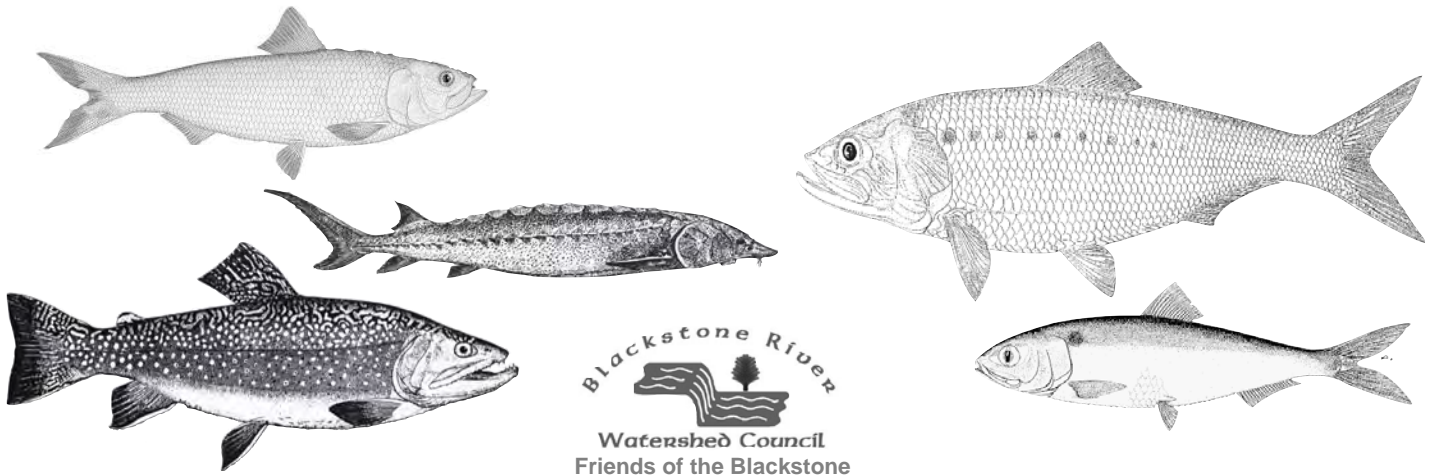
### 2-D Enhancing Coastal Resilience with Green Infrastructure

*Wenley Fegurson - Save the Bay wfegurson@savebay.org*

*Pam Rubinoff - University of Rhode Island Coastal Resources Center rubi@gso.uri.edu*

Recent king tides have given Rhode Islanders a glimpse into the future, showing what coastal flooding will do to habitats and communities. This workshop will review how to use mapping tools developed by URI and CRMC that show 1, 3, 5 and 7 feet of sea rise and storm surge. Panelists will highlight coastal adaptation projects that have been implemented sharing both challenges and solutions to address the dynamic nature of these sites and lessons learned that can be applied in other coastal areas.

# WE WELCOME ALL KINDS



## Blackstone River Watershed Council/Friends of the Blackstone invite you to join us

Help us make the Blackstone River swimmable and fishable

For more information find us at [BlackstoneRiver.org](http://BlackstoneRiver.org)  
and on Facebook @ Blackstone River Watershed Council



The **Narragansett Bay National Estuarine Research Reserve (NBNERR) Coastal Training Program (CTP)** provides decision-makers with the science-based information and skills needed to address critical local resource management issues. Municipal staff and officials, designers and developers, landscape architects, engineers, attorneys, natural resource managers, and non-profit conservation organizations all benefit from the program.

### Coastal Training Programs

range from participatory workshops to hands-on skills training and focus on topics such as:

- Low Impact Development
- Conservation easements
- Climate change adaptation
- Science communication
- Stakeholder engagement

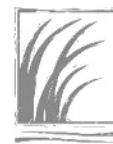
---

*For more information please contact:*

Jennifer West, CTP Coordinator  
401-222-4700, x 7413 | [jennifer@nbnerr.org](mailto:jennifer@nbnerr.org)

[www.nbwctp.org](http://www.nbwctp.org)

---



NATIONAL  
ESTUARINE  
RESEARCH  
RESERVE  
SYSTEM

# Workshops – Session II 11:45 – 12:55 *continued*

---

## 2-E Revising the Land Trust Standards & Practices

*Ethan Winter - Land Trust Alliance ewinter@lta.org*

In 1989, the land trust community developed and adopted a set of guidelines and “best practices” that describe how to operate a land trust legally, ethically, in the public interest, and with a sound program of land transactions and land stewardship. These guidelines, the nationally recognized Land Trust Standards and Practices (S&P), were most recently revised in 2004. Starting in 2016 and continuing into 2017, the Land Trust Alliance is leading a collaborative process to revise S&P to reflect changes in the legal and operational environment of the land trust community over the last 10 years and to provide overall alignment with the Land Trust Accreditation Program and TerraFirma. This workshop will begin with quick overview of the S&P: what they are, why and how they were developed. It will then discuss the proposed changes so that you can provide feedback on an initial draft revision of S&P.

## 2-F Starting & Running a Community Garden

*Margaret DeVos - Southside Community Land Trust & RI Land Trust Council margaret@southsideclt.org*

*Rob Booz - Southside Community Land Trust rob@southsideclt.org*

One opportunity for land trusts and communities that protect farmland ... or even vacant lots ... is establishing a community garden. Community gardens provide community residents with access to a plot of land where they can grow food. There is high demand for community garden space in many communities and creating a community garden is a good strategy for expanding community interest in and support for your organization. This workshop will briefly discuss the positive health, economic, environmental and community building impacts associated with community gardens. It will feature best practices for establishing and operating a community garden as well as strategies for avoiding potential problems.

## 2-G Planting Rhode Island’s Native Species for the Future

*Hope Leeson - Rhode Island Natural History Survey hleeson@rinhs.org*

“The best time to plant a tree was 20 years ago. The second best time is now.” The Chinese Proverb holds value for 21st century land management efforts, which increasingly involve invasive species management. In many cases, replanting with native species would be beneficial, and in coastal areas is a requirement. Decisions made on what to plant can be complicated when land managers ponder the importance of local ecotypes, planning for climate changes, and the present day needs of wildlife. This workshop will focus on the benefits of planting native species following invasive species removal, and strategies for creating biologically diverse native plant communities to be more resilient to changes in climate conditions.

## 2-H Tried and True Tips for Successful Fundraising

*Martin Sadd - Kingston Chamber Music Festival msadd@cox.net*

*Daniel Schleifer - New Urban Arts daniel@newurbanarts.org*

Fundraising is a constant challenge for small non-profit organizations. Sometimes it feels like you need more money before you can have the time and capacity to do the work of successful fundraising. Attend this workshop and hear how two people successfully implemented fundraising strategies for local organizations.

## 2-I Use Social Media to Talk Directly – and Successfully – to Your Audiences

*Chip Young - Communications consultant & ecoRI News csyenv@gmail.com*

*Rick Schwartz - StraightTalk consulting Rick@SchwartzTalk.com*

If the mass media speaks to everyone, the social media – Facebook, Instagram, ebroadcasting, YouTube, websites, and more – are unparalleled for talking directly with specific audiences. Your organization can’t afford to ignore using social media. This workshop will discuss: recognizing and working with the totally different “voices” of, and audiences for, each social medium; keeping your social media affordable and easy; finding great content that even you will enjoy; getting those all-important email addresses; and your questions.

Building and Preserving South County  
THE 31ST ANNUAL R.I. STATEWIDE HISTORIC PRESERVATION CONFERENCE



SATURDAY, APRIL 30 IN NORTH KINGSTOWN AND EXETER  
[www.preservation.ri.gov/conference](http://www.preservation.ri.gov/conference)

Participate in tours, workshops, and lectures  
on a variety of historic preservation topics

Presented by the R.I. Historical Preservation  
& Heritage Commission with support from  
local, state, and federal preservation partners



**Get Smart**  
about your environment

**Read**  
**ecoRI**  
**news**

Get the latest local environmental news  
delivered to your inbox every Tuesday.

**Sign up at [ecoRI.org/read](http://ecoRI.org/read)**

*Phoenix Composting Toilets*

Installation • Maintenance • Graywater

Residences • Public Facilities • Schools  
Parks • Campgrounds • Shoreland Zones  
Environmentally Sensitive Areas



[www.compostingtoilet.com](http://www.compostingtoilet.com)  
[ben@compostingtoilet.com](mailto:ben@compostingtoilet.com)

413-237-7060 • 406-862-3854

Approved • Odorless • Effective • Safe



Carol Lynn Trocki  
Conservation Biologist  
(401) 952-2937  
[cltrocki@gmail.com](mailto:cltrocki@gmail.com)

**Baseline Documentation**  
**Land Management Planning**  
**Conservation Values Assessment**

## Workshops – Session II 11:45 – 12:55 *continued*

---

### 2-J Engage, Motivate, And Get Out of the Way!

*Alicia Lehrer - Woonasquatucket River Watershed Association    alehrer@wrwc.org*

*Bari Freedman - Bike Newport    bari@bikeneuportri.org*

Sometimes being a director of an organization is akin to a skilled magician preventing a mass of spinning plates from crashing to the floor. Leadership skills in member recruitment and retention, conducting good meetings, engaging an audience, giving volunteers what they need aren't just buzz words that read well in a workshop description. They are the essence of what makes a good program flourish. Volunteers and members are the life blood of all non-profits. We depend on them! Can we be better leaders? This workshop provides the necessary skills to keep all the plates spinning at the same time.

## Workshops – Session III 2:45 – 4:00 *choose from 10*

### 3-A Comprehensive Plans Revisited - Using Comprehensive Plans for Conservation and Management

*Nancy Letendre, Esq. AICP - Mason & Associates Inc.    NLetendre@Mason-Associates.com*

*Kevin Nelson - Rhode Island Division of Statewide Planning    kevin.nelson@doa.ri.gov*

Comprehensive Plans are required to provide an inventory of significant natural resource areas including water, soils, prime agricultural lands, forests, wildlife, wetlands, aquifers, coastal features, and floodplains. The Plan must include goals, policies and implementation techniques for the protection and management of these areas. Ensuring that town environmental/conservation inventories, wildlife action plans, watershed plans, etc. are reflected in your town's Comprehensive Plan is key to saving those special places in your town. Including conservation and management techniques in a Comprehensive Plan can be a powerful strategy in fulfilling your organization's mission. Come learn how to make this happen with your community's Comprehensive Plan.

### 3-B Free Has a Cost - Being Your Own "Tree Activist"

*David Flanders - South Kingston Conservation Commission    arborman818@gmail.com*

Many Conservation Commissions, land trusts and watershed organizations hold "give-a-way" programs that give free trees, shrubs and flowers. Often these "give-a-way" programs are not in the best interest of the native landscape resulting in an introduction of less desirable species. Learn how to meld a town-wide native plant inventory into a planned "give-a-way" program that reintroduces or increases desirable native species. Is there a way to get trees and plants to where they can give the most benefit? Attend this workshop and find out.

### 3-C Strength in Diversity: the Importance of Developing Urban Conservation

*Rebekah Greenwald Speck - Riverzedge Arts    bekah@RIVERZEDGEARTS.ORG*

*Students - Riverzedge Green Design Lab*

*Max Green - Conservation Law Foundation    MGreene@clf.org*

East Providence, Central Falls, Woonsocket, Providence, and Johnston, to name a few – feature some of the highest levels of voter support for Open Space and Recreation bond referendums. Yet these cities also generally feature lower participation rates in statewide and local environmental organizations than their neighbors just a town away. Land trusts, watershed groups, Conservation Commissions and other environmental organizations can offer their expertise to support these urban communities' quest for recreation, open space, sustainable programs, urban farms, and more – but how? What are the best ways to ensure that urban communities are fully included in urban conservation work? Answering this question is key to all conservation work in our state. In many ways, the greening of our cities is essential to maintaining the rural landscape.

**Make  
the Switch**

Choose 100% local  
renewable energy  
for your home.

[ripower.org/green](http://ripower.org/green) **PEOPLE'S**  
Power & Light

ROGER WILLIAMS PARK ZOO

**We're Committed  
TO CONSERVATION!**

*Many thanks to our partners*

*Species Recovery* *Citizen Science Opportunities*

*Environmental Education*

Explore the possibilities at [rwpzoo.org](http://rwpzoo.org)

**Climate-Smart Cities**

The Trust for Public Land is happy to be launching its Climate-Smart Cities program in Rhode Island. For more information contact Kevin Essington at [kevin.essington@tpl.org](mailto:kevin.essington@tpl.org).

The Trust for Public Land creates parks and protects land for people. [tpl.org](http://tpl.org)

**clf**

**conservation law foundation**

CLF protects New England's environment for the benefit of all people. We use the law, science and the market to create solutions that preserve our natural resources, build healthy communities, and sustain a vibrant economy.



# Workshops – Session III 2:45 – 4:00 *continued*

---

## 3-D Reinventing Urban Landscapes with Green Infrastructure

*Alicia Lehrer - Woonasquatucket River Watershed Council    [alehrer@wrwc.org](mailto:alehrer@wrwc.org)*

*Karen Beck, RLA, FASLA - RI Chapter, American Society of Landscape Architects    [kbeck@commonwealth-eng.com](mailto:kbeck@commonwealth-eng.com)*

Green infrastructure is an approach to managing stormwater by infiltrating it in the ground where it is generated using vegetation or porous surfaces, or by capturing it for later reuse. Green infrastructure practices include infiltration systems like rain gardens, vegetated swales and permeable pavement; green roofs; rainwater harvesting; downspout disconnection; and tree planting. Green infrastructure is increasingly seen as important for climate adaptation, particularly in urban areas. This workshop will review the basics of green infrastructure, describe exciting projects underway in Rhode Island and direct participants to tools they can apply to projects in their communities.

## 3-E Resources Available for Stewardship

*Peter August - University of Rhode Island & Conservation Stewardship Collaborative    [pete@edc.uri.edu](mailto:pete@edc.uri.edu)*

*David Gregg - RI Natural History Survey & Conservation Stewardship Collaborative    [dgregg@rinhs.org](mailto:dgregg@rinhs.org)*

Do you need help taking care of the lands you are protecting? Do you need help describing and documenting what is there? How about creating a management plan or a monitoring report? Do you need advice on managing an invasive species? Since 2009, the RI Conservation Stewardship Collaborative has been developing resources to help land trusts and other organizations steward protected lands. In this workshop you will learn what resources and programs are available to help you.

## 3-F Managing Your Land for both Forest & Wildlife Values

*Gary Casabona - USDA, Natural Resource Conservation Service    [gary.casabona@ri.usda.gov](mailto:gary.casabona@ri.usda.gov)*

*Chris Modisette - USDA, Natural Resource Conservation Service    [chris.modisette@ri.usda.gov](mailto:chris.modisette@ri.usda.gov)*

This workshop will discuss conservation planning and implementation on forest land to benefit declining species of wildlife along with forest productivity and health. Oftentimes, these goals are compatible, but sometimes there may be challenges in reconciling the competing interests. The discussion will include many aspects of forest management and conservation biology of rare species, including habitat considerations for declining populations of amphibians. The workshop will be a lively session of point and counterpoint. It will also include practical advice on obtaining forest management plans, hiring loggers, and negotiating terms.

## 3-G Thinking Outside the Box: Can We Create Amphibian Habitat as We Manage Stormwater?

*Greg Gerritt - Friends of the Moshassuck    [gerritt@mindspring.com](mailto:gerritt@mindspring.com)*

*Jonathan Richardson - Providence College    [jrichardson@providence.edu](mailto:jrichardson@providence.edu)*

*Jim Riordan - ESS Group, Inc.    [JRiordan@essgroup.com](mailto:JRiordan@essgroup.com)*

Amphibian habitats are threatened. As we manage rainwater with green infrastructure is there an opportunity to create habitat for amphibians? The panel will explore the potential and the pitfalls and engage attendees in some out of the box thinking.

## 3-H Understanding the Complexities of Renewable Energy in Rhode Island

*Jerry Elmer - Conservation Law Foundation    [JElmer@clf.org](mailto:JElmer@clf.org)*

Expanding renewable energy is critical to Rhode Island's climate mitigation strategies. Energy policy has its own language and programs – distributed generation, net metering, renewable energy fund, PACE, EERMC, PUC. This workshop will decode energy policy and renewable energy programs and highlight priorities for moving the effort forward in 2016.

Connecting People with the Land...



[www.NRISOS.org](http://www.NRISOS.org)



**Rhode Island Rivers Council**

Created by the RI General Assembly and now coordinating efforts to improve the quality of the state's rivers and their watersheds for 25 years

c/o RI Water Resources Board  
One Capitol Hill,  
Providence, RI 02908

[www.ririvers.org](http://www.ririvers.org) — [info@ririvers.org](mailto:info@ririvers.org)



**APPLIED BIO - SYSTEMS INC.**  
WETLAND CONSULTANTS

**LINDA A. STEERE**  
President and  
Principal Wetland Biologist

P.O. BOX 985  
WEST KINGSTON, R.I. 02892 (401) 783-6740

**Paul A. Roselli** • Storm water analysis thesis •  
Global Environmental Policy student • **Paul A. Roselli** •  
Runoff buffers learner • Water lab guy •  
[proselli@cox.net](mailto:proselli@cox.net) • (401) 447-1560 • Bryant  
University Graduate student needs summer  
internship • *That's me, by the way!*  
**Paul A. Roselli**  
*Hire me before someone else does!*

James V. Aukerman  
Counsellor at Law

**JAMES V. AUKERMAN & ASSOCIATES, LLC**

60 South County Commons Way, Suite G4  
Wakefield, Rhode Island 02879-2299

401 788-9080 tel [jva@aukermanlaw.com](mailto:jva@aukermanlaw.com)  
401 788-9084 fax [www.aukermanlaw.com](http://www.aukermanlaw.com)



**ATLANTIC  
TROPHY**

TEL. 401-823-7230  
800-596-3003  
FAX. 401-823-7299

**STEVEN E. PACKER**  
PRESIDENT

TROPHIES, PLAQUES, CLOCKS, AWARD RIBBONS, MEDALS, PENS  
CRYSTAL & GLASS AWARDS, T-SHIRTS, SPORTSWEAR, EMBROIDERY  
1010 TIOGUE AVE, UNIT 32, COVENTRY, RI 02816  
[ATLANTICTROPHY@VERIZON.NET](mailto:ATLANTICTROPHY@VERIZON.NET)



**NARROW RIVER PRESERVATION ASSOCIATION**  
PO Box 8 ~ SAUNDERSTOWN, RI 02874 ~ 401-783-6277

[www.narrowriver.org](http://www.narrowriver.org)  
[nrpa@narrowriver.org](mailto:nrpa@narrowriver.org)

**CAROLYN V. MARSDEN**

////////////////////  
**GRAPHIC DESIGN**  
**MISSMARSDEN.COM**

# Workshops – Session III 2:45 – 4:00 *continued*

---

## 3-I Strategies for Keeping and Growing Your Audience

*Veronica Cintron - V+R Digital    veronica@vandrdigital.com*

*Paul A. Roselli - Burrillville Land Trust & Blackstone River Watershed Council    proselli@cox.net*

Creating an emotional connection with your audience is the best way to drive more engagement with the people you serve. One of the most powerful connections in branding and marketing is the ability to combine an idea with an emotion. But how do you do that given time and energy constraints and the fact that most of us are volunteers? Veronica Cintron offers tips, tricks and insights on how to create a voice that will keep your audience coming back wanting more. Paul Roselli demonstrates a few ways that the land trust maintains a connection.

## 3-J Using Online Information to Make Maps

*Peter Stetson - Coventry High School Science Department    petestetson@verizon.net*

*Roy Najecki – Glocester Land Trust & RI Land Trust Council    roy@najecki.com*

This workshop will highlight the opportunities for groups to use a free online mapping website to create maps of community and environmental data. Participants will be shown how to create an account, add data, save, and share maps with their members and the general public.



**Your Environment. Designed.**

Turning creativity into places. Imagination into cleaner air and water. Ideas into communities.  
A world designed with infinite possibilities, all through landscape architecture.

[www.riasla.org](http://www.riasla.org)

# Notes

---



# Notes

---



Photo by Wood



# Natural Resources Conservation Service

Keeping your farm and woods healthy just got easier.

The Natural Resources Conservation Service (NRCS) provides conservation planning and financial and technical assistance for—

- Farm and/or Forest Management Plans
- Seasonal high tunnels
- Pollinator habitat
- Manure management
- Farm energy audits
- Preventing soil erosion
- Enhancing woodlands
- Improving pasture land
- Improving water quality
- Protecting and enhancing wildlife habitats

...and more!

**We'll help you find the best programs to fit your conservation needs—**

**E-mail** [NRCSInfo@ri.usda.gov](mailto:NRCSInfo@ri.usda.gov)

**Phone** 401-822-8848

**Visit** 60 Quaker Lane, Suite 46  
Warwick, RI 02886



***Do you own or manage farmland or forest land in Rhode Island?***



***Funding is available to eligible applicants to protect, restore, or enhance your land!***



**[www.ri.nrcs.usda.gov](http://www.ri.nrcs.usda.gov)**

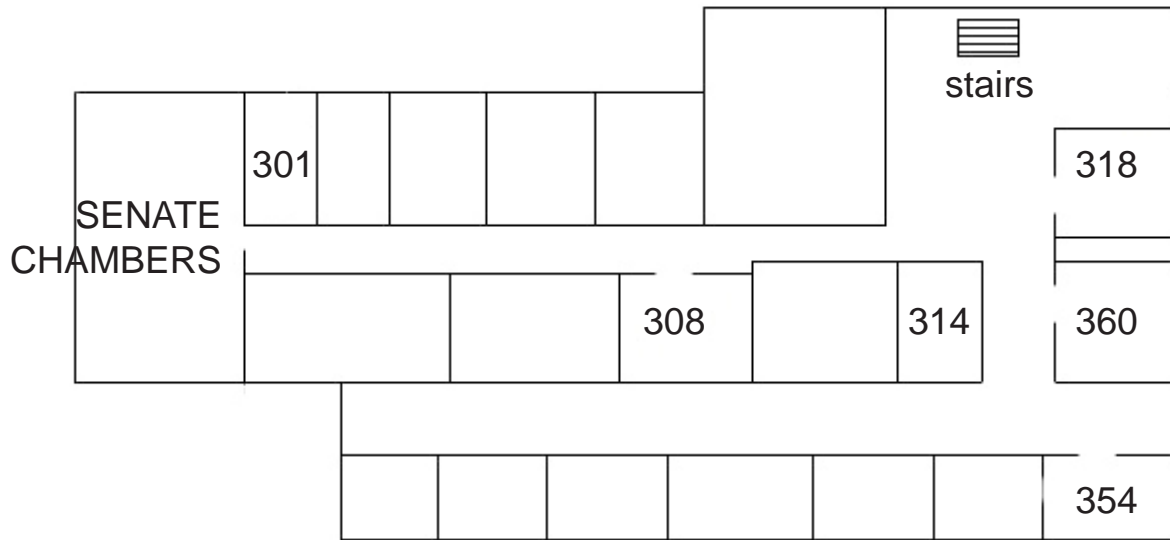
**NRCS IS AN EQUAL OPPORTUNITY EMPLOYER AND PROVIDER**



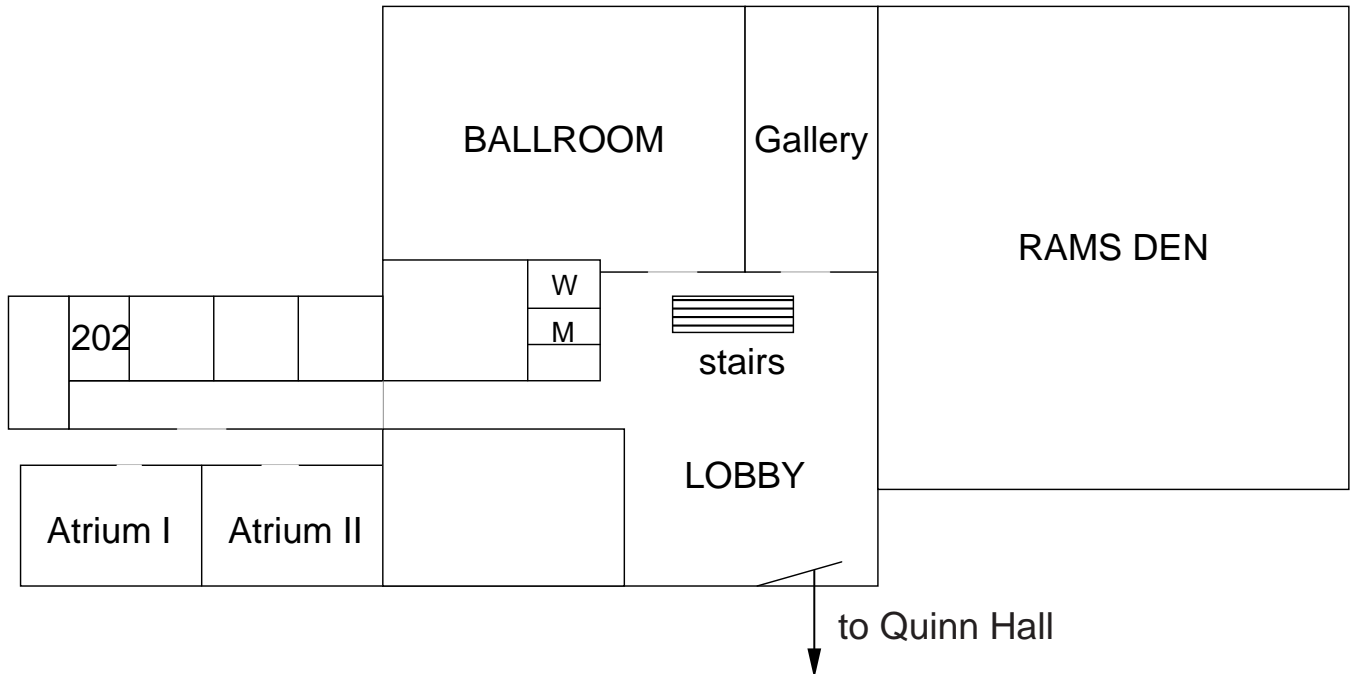
# LAND & WATER CONSERVATION SUMMIT

URI Memorial Union, Kingston Campus

## UPSTAIRS



## GROUND FLOOR





## Thank you for making our community a better place

Bank of America recognizes the Rhode Island Land & Water Conservation Summit as a vital community resource. People like you are an inspiration to us all.

**Visit us at [bankofamerica.com/local](http://bankofamerica.com/local)**

Life's better when we're connected®

©2016 Bank of America Corporation | ARB8SPB6

**Bank of America** 

Bank of Merrill U.S. Bank of America  
America Lynch Trust Merrill Lynch